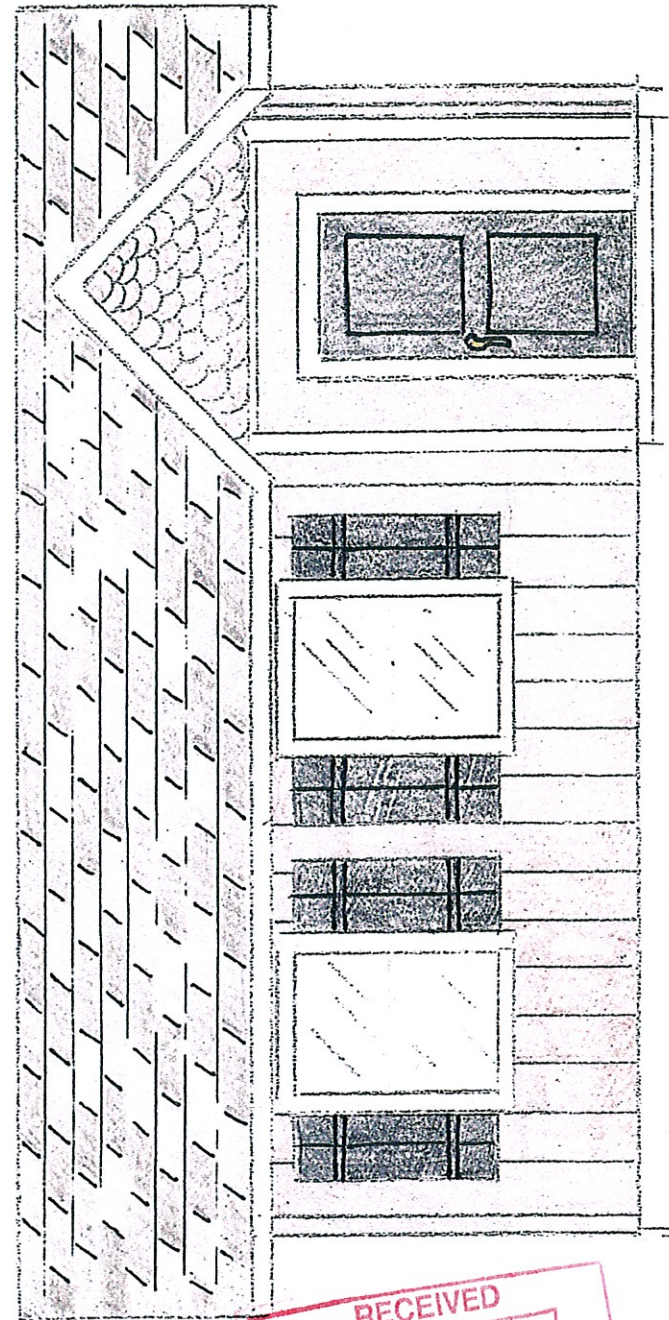


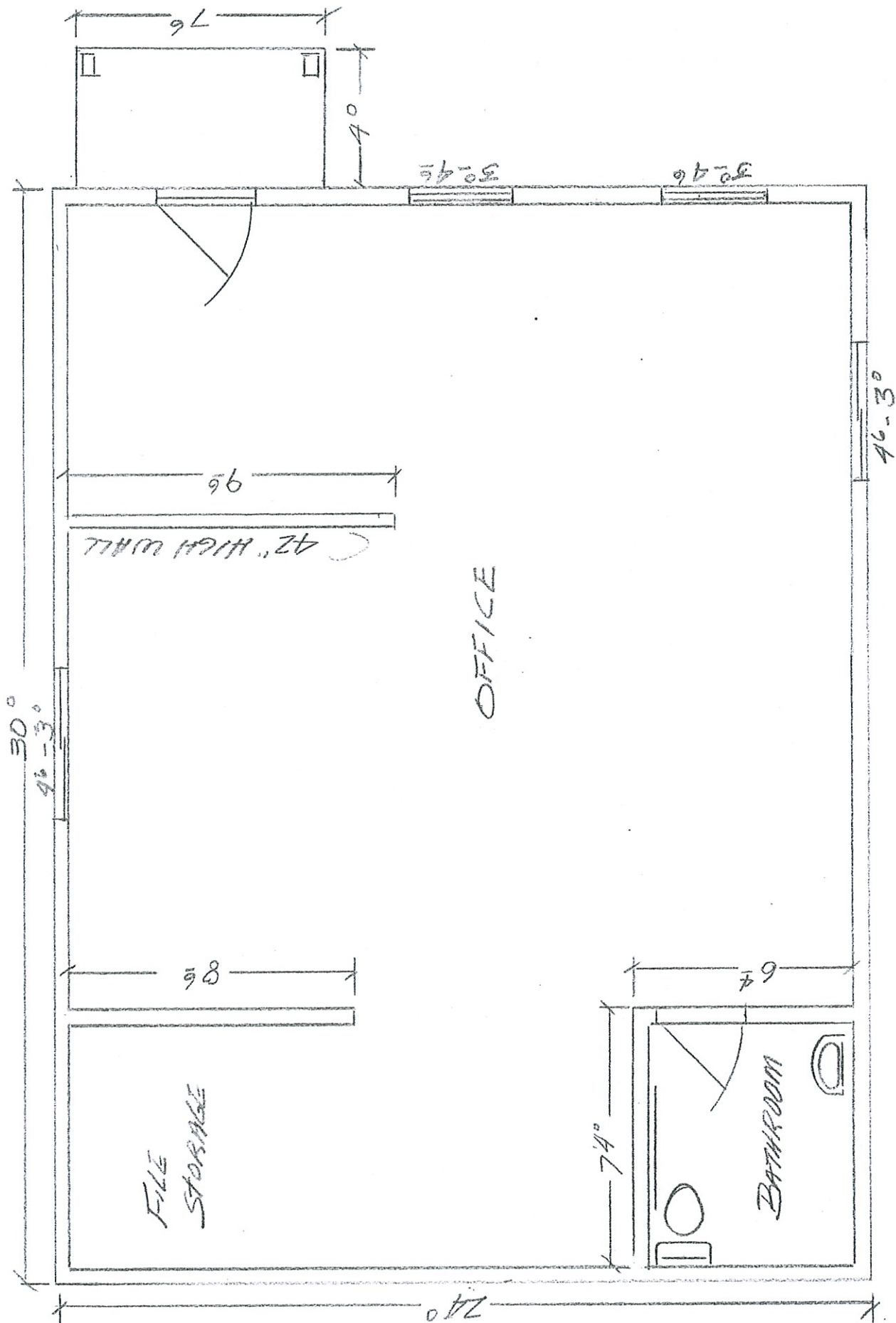
- 1 Body: Deer Run ECC-45-1™
 - 2 Trim: Echo Valley ECC-25-2^u
 - 3 Accent: Obsidian Stone ECC-25-3^o
- Feature: Charcoal Composite Roof



FRONT ELEVATION

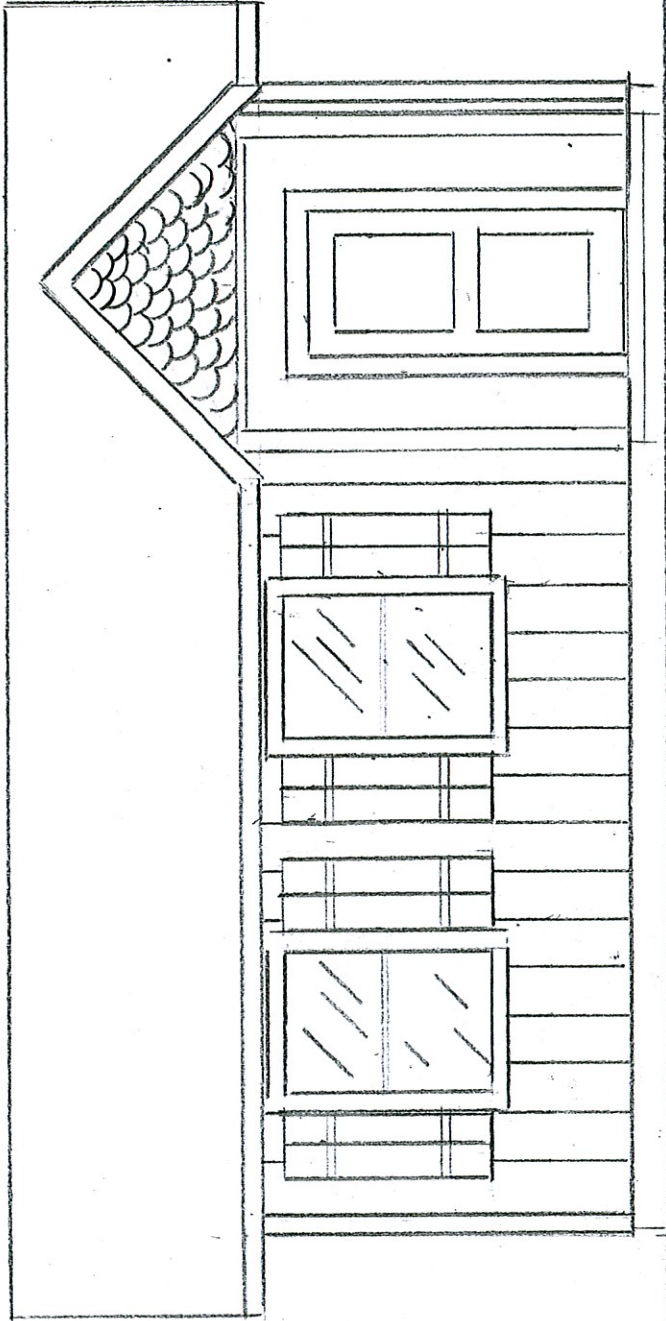
RECEIVED
 APR 20 2011
 CITY OF CALISTOGA

770⁰ FLOOR SPACE

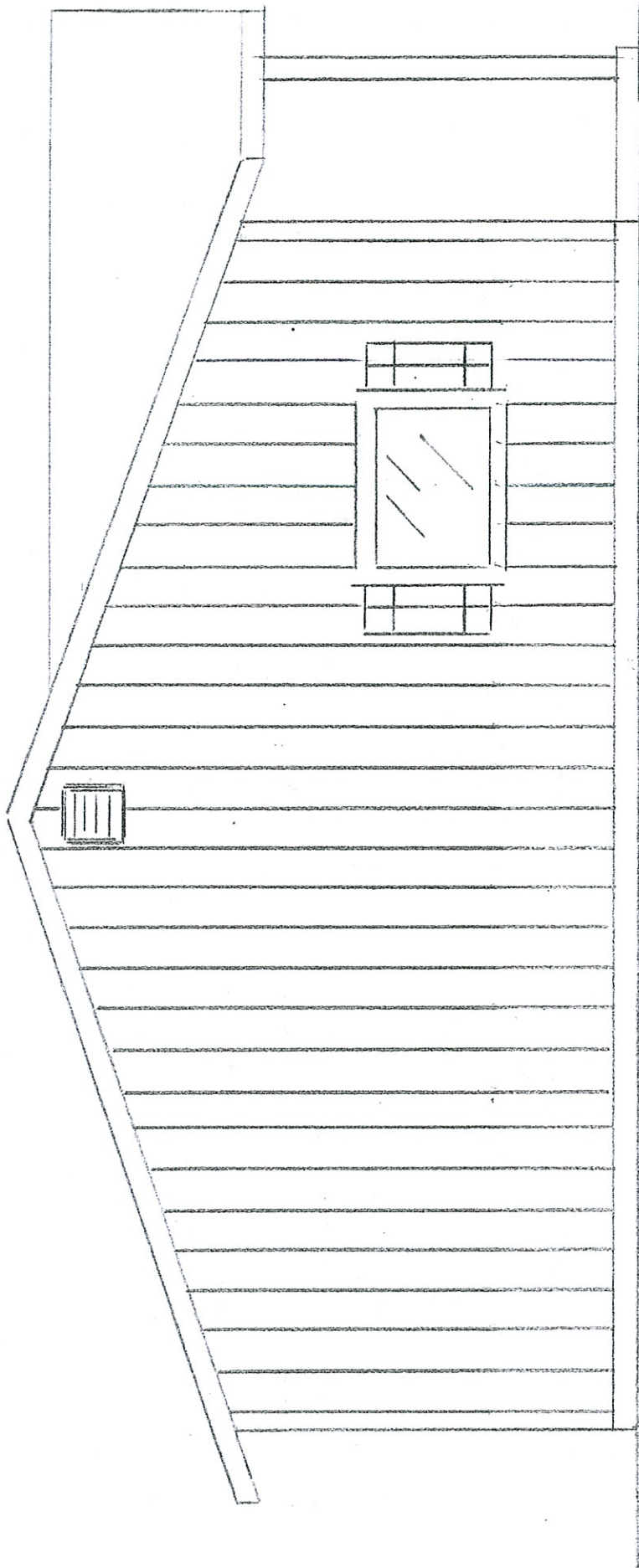


1/4" = 1'0"
SCALE

FLOOR PLAN



FRONT ELEVATION



SIDE ELEVATION

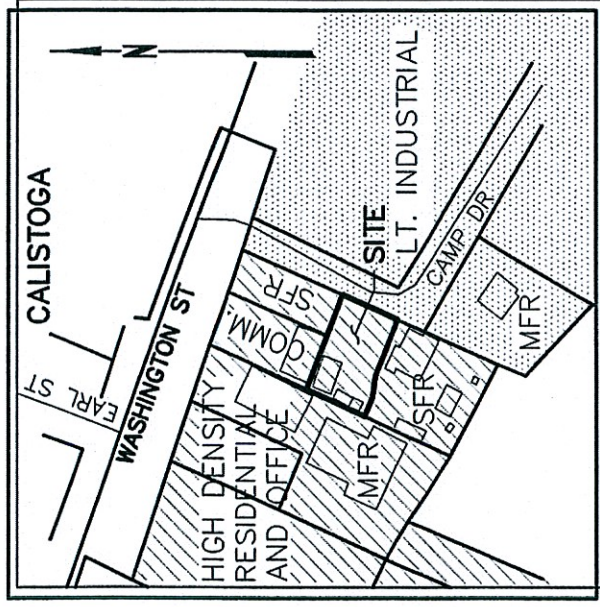
SYMBOLS & LEGEND

- FOUND IRON PIPE, NO TAG, SIZE AS NOTED
- GRATE INLET
- ⊙ TREE
- ✕ FENCE
- FLOW LINE
- GRADE BREAK
- - - PROPERTY LINE
- ▭ CONCRETE

ABBREVIATIONS

- ± MORE OR LESS
- AC ASPHALT CONCRETE
- GI GRATE INLET
- GM GAS METER
- INV INVERT
- MFR MULTI-FAMILY RESIDENTIAL
- P PARKING SPACE
- SD STORM DRAIN
- SFR SINGLE FAMILY RESIDENTIAL
- SS SANITARY SEWER
- TG TOP OF GRATE
- TYP TYPICAL
- UB UTILITY BOX
- W WATER
- WM WATER METER
- WS WATER SERVICE
- () RECORD DATA

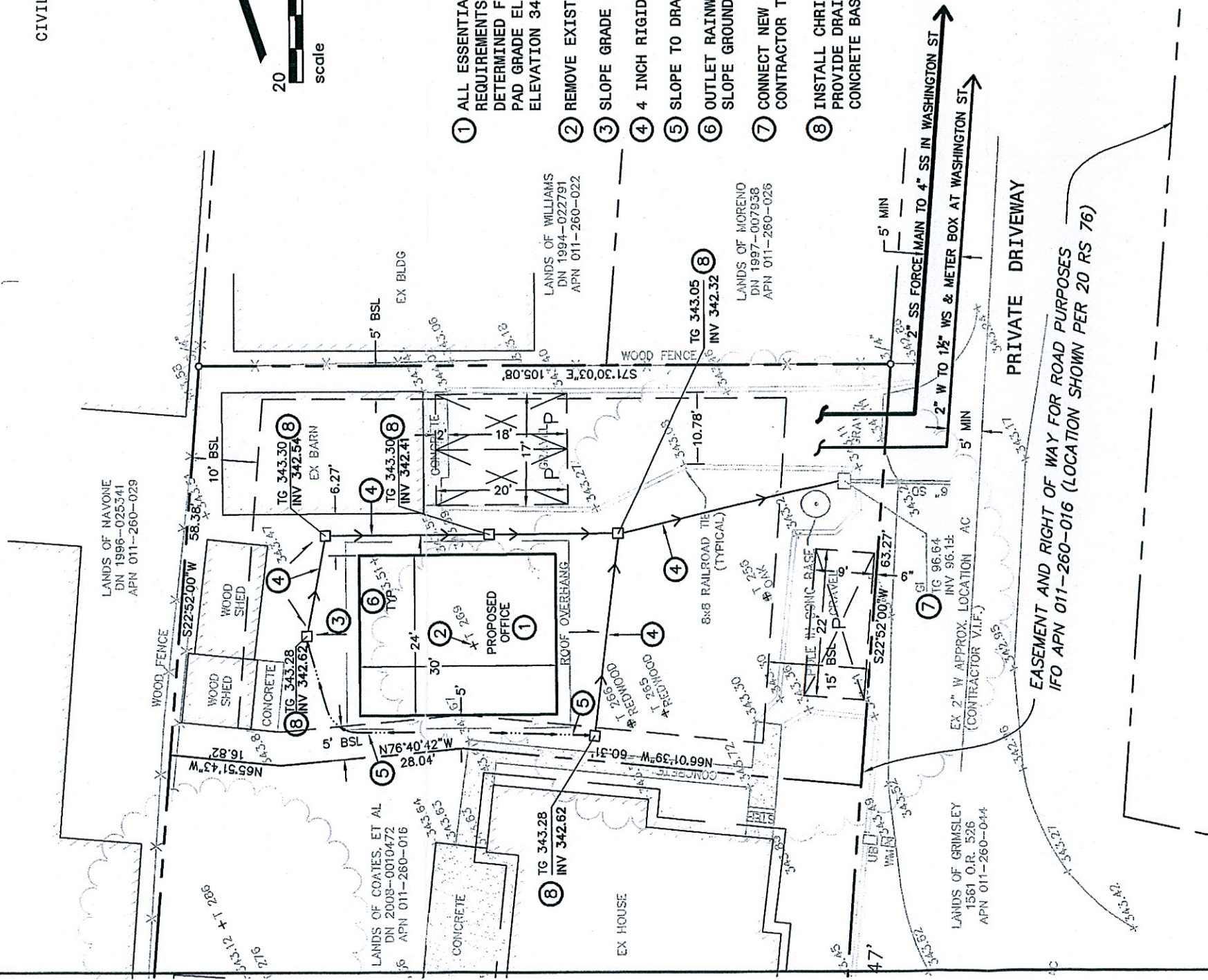
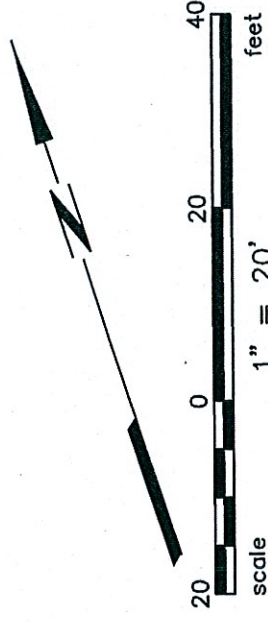
BENCHMARK: SPIKE IN NORTH SIDE OF POWER POLE ON THE EASTERLY SIDE OF CAMP DRIVE, 72'± SOUTHERLY LINE OF WASHINGTON STREET, ELEVATION = 345.75' (NAVD 88)



VICINITY MAP
NOT TO SCALE

OWNER: PAUL COATES CONSTRUCTION
P.O. BOX 1006
CALISTOGA, CA. 94515
PH: (707) 942-5268
FAX: (707) 942-5288

CIVIL ENGINEER: BKF CARLENZOLI
325 TESCONI CIRCLE
SANTA ROSA, CA. 95401
PH: (707) 583-8500
FAX: (707) 583-8539



- ① ALL ESSENTIAL FACILITIES TO BE LOCATED PER CITY REQUIREMENTS ABOVE THE BASE FLOOD ELEVATION DETERMINED FOR THIS SITE OF 344.90 FEET (NAVD88). PAD GRADE ELEVATION 342.55, FINISHED FLOOR SLAB ELEVATION 343.55 FEET.
- ② REMOVE EXISTING TREE.
- ③ SLOPE GRADE AT 5% MINIMUM FOR 4 FEET, TYPICAL.
- ④ 4 INCH RIGID PVC DRAINLINE. SLOPE AT 0.5% MINIMUM.
- ⑤ SLOPE TO DRAIN.
- ⑥ OUTLET RAINWATER LEADERS TO CONCRETE SPLASH BLOCKS, SLOPE GROUND TO DRAIN TO STORM DRAIN SYSTEM.
- ⑦ CONNECT NEW 4 INCH DRAIN TO EXISTING GRATE INLET. CONTRACTOR TO VERIFY BEFORE CONSTRUCTION.
- ⑧ INSTALL CHRISTY PRECAST DRAIN BOX, MODEL V09. PROVIDE DRAIN ROCK AT BOTTOM OF BOX OR 4" CAST CONCRETE BASE.

DATE: APRIL 2011
SCALE: 1" = 20'
DESIGN: BAD
DRAWN: CAG
APPROVED: BAD
JOB #: 20119021-10

SITE PLAN
PROPOSED OFFICE
2348 CAMP DRIVE
LANDS OF COATES, ET AL
DN 2008-0010472
APN 011-260-015
LOT AREA 6,263 SF

CALISTOGA NAPA COUNTY CALIFORNIA

BKF
CARLENZOLI
ENGINEERS / SURVEYORS / PLANNERS



Bonnie A. Diefendorf
BONNIE A. DIEFENDORF RCE 24916