

Calistoga Bicycle Plan

CALISTOGA ROASTERY

OPEN



Prepared for



City of Calistoga

Prepared for



Napa County Transportation & Planning Agency

January 2012

Acknowledgments

Project Team

Napa County Transportation & Planning Agency

Eliot Hurwitz, *Program Manager*

Paul Price, *Executive Director*

Renée Kulick, *Administrative Assistant*



Consultant Team

Whitlock & Weinberger Transportation, Inc.

Steve Weinberger, PE, PTOE, *Principal*

Mary Jo Yung, PE, PTOE, *Traffic Engineer*

Allan Tilton, PE, *Traffic Engineer*

Josh Abrams, *Transportation Planner*

Angela McCoy, *Editing/Formatting*

Dalene J. Whitlock, PE, PTOE, *Report Review*



Questa Engineering Corporation

Jeffery Peters, *Principal*

Margaret Henderson, ASLA, *Principal*

Aaron Fulton, *GIS Specialist*

Shaun O'Bryan, *GIS Specialist*



Project Steering Committee

Michael Costanzo, *Executive Director*

Napa County Bicycle Coalition/

Napa County Bicycle Advisory Committee

Randy Davis, *Director, Parks and Recreation*

City of American Canyon

Jean Hasser, *Principal Planner (Retired)*

City of Napa

Greg Desmond, *Senior Planner*

City of St. Helena

Rick Marshall, *Deputy Director, Public Works*

County of Napa

City Staff

Richard Spitler, *City Manager*

Dan Takasugi, *Public Works Director*

Ken MacNab, *Planning and Building
Manager*

Erik Lundquist, *Senior Planner*

City Council

Jack Gingles, *Mayor*

Michael Dunsford, *Vice Mayor*

Chris Canning

Gary Kraus

Karen Slusser

Planning Commission

Jeff Manfredi, *Chairperson*

Paul Coates, *Vice Chairperson*

Nicholas Kite

Carol Bush

Walter Kusener

Table of Contents

	Page
Introduction	1
Setting and Context	9
Bicyclists and Bicycle Facilities	23
The Local Bicycle Transportation Network	28
Implementation	49
Definitions, Terms, and List of Acronyms	62
Bibliography	67
Figures	
1 Calistoga Bikeways Map	3
2 Up-Valley Bikeways Map	4
3 Countywide Bikeways Map	5
4 Calistoga General Plan Land Use Map	9
5 Calistoga Roadway Network and Classifications	13
6 Grant Application Development Calendar	61
Tables	
1 Required Bicycle Master Plan Elements	7
2 2000 US Census – Mode Split Data for Calistoga	11
3 Bicyclist Types, Preferences and Needs	24
4 Proposed Bicycle Count Locations	35
5 Calistoga Schools	35
6 Calistoga Parks	36
7 Existing Bikeways	36
8 Proposed Bikeways and Project Priorities	41
9 Bicycle System Maintenance	50
10 Maintenance Cost Assumptions	51
11 Construction Cost Assumptions for Bikeway Improvements	53
12 Cost Assumptions for Programmatic Improvements	55
13 Historical Expenditures on Bicycle Facilities Fiscal Year 2004/05 to 2009/10	57
Appendices	
A Summaries of Relevant Planning Documents and Policies	
B Bikeway Type Design Details	
C OTS Collision Rankings, Charts and Graphs	
D Bicycle Count Methods and Recommendations	
E Funding Program Summaries	

Introduction

Purpose of the Plan

The Calistoga Bicycle Plan was developed as a component of the Napa County Transportation Authority's *Countywide Bicycle Plan Update*. The Plan is intended to guide and influence the development of bikeways, bicycle policies, bicycle programs and bicycle facility design standards to make bicycling throughout Calistoga and Napa County more safe, comfortable, convenient and enjoyable for all bicyclists. The overarching goal of the Bicycle Plan is to increase the number of persons who bicycle throughout Calistoga and Napa County for transportation to work, school, utilitarian purposes, and recreation. Bicycle Plan Maps including the Calistoga Bikeways Map, Up-Valley Bikeways Map, and Countywide Bikeways Map are shown in Figures 1, 2, and 3 respectively.

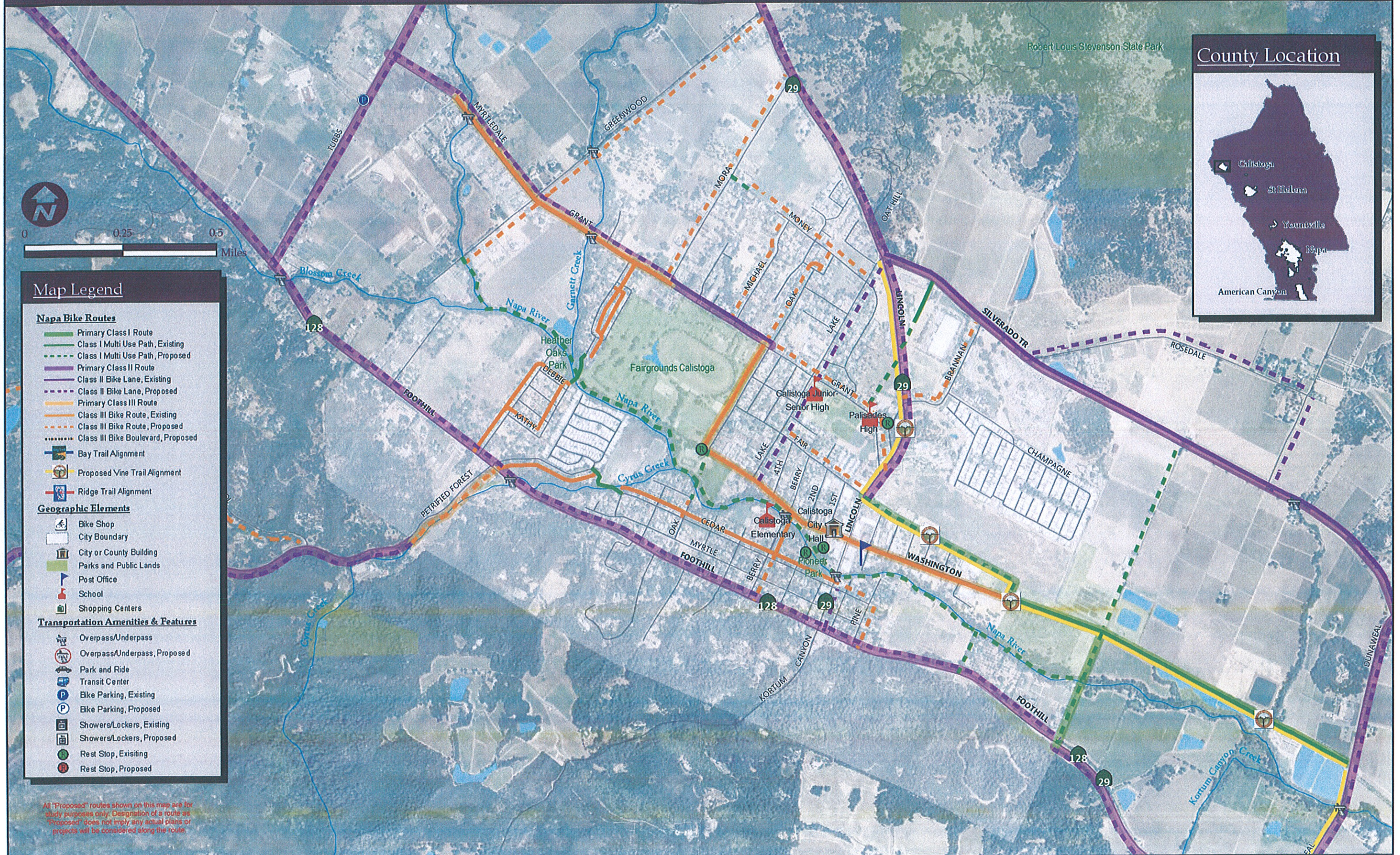
Background

This City's existing Bicycle Transportation Plan was adopted April 3, 2007. The 2007 Bicycle Transportation updated the 1996 Bicycle Transportation Plan. At the September 20, 2010 City Council meeting, the Council directed staff to update the City's Bicycle Transportation Plan (BTP), in coordination with the Countywide Bicycle Transportation Plan being developed by the Napa County Transportation Planning Agency (NCTPA), and initiate the related General Plan Amendments. The City Council found it necessary to take a comprehensive approach to addressing policies, standards, education, and access to improve bicycle transportation and safety across city boundaries and to neighboring counties.

Caltrans Compliance

The Calistoga Bicycle Plan was prepared in accordance with the California Bicycle Transportation Act. To be eligible for Bicycle Transportation Account Funds, the California Bicycle Transportation Act requires that cities and counties prepare and adopt a Bicycle Transportation Plan that addresses items a – k in Section 891.2 of the Streets and Highways Code. These items are outlined in Table I. To maintain eligibility with the Caltrans BTA, Bicycle Transportation Plans must be updated every five years. Information on the Bicycle Transportation Act, Bicycle Transportation Plan (BTP) preparation and processing and eligible Bicycle Transportation Account projects is available on Caltrans' BTA webpage: <http://www.dot.ca.gov/hq/LocalPrograms/bta/btawebPage.htm>

This page intentionally left blank



Map Legend

Napa Bike Routes

- Primary Class I Route
- - - Class I Multi Use Path, Existing
- - - Class I Multi Use Path, Proposed
- Primary Class II Route
- - - Class II Bike Lane, Existing
- - - Class II Bike Lane, Proposed
- Primary Class III Route
- - - Class III Bike Route, Existing
- - - Class III Bike Route, Proposed
- - - Class III Bike Boulevard, Proposed
- Bay Trail Alignment
- Proposed Vine Trail Alignment
- Ridge Trail Alignment

Geographic Elements

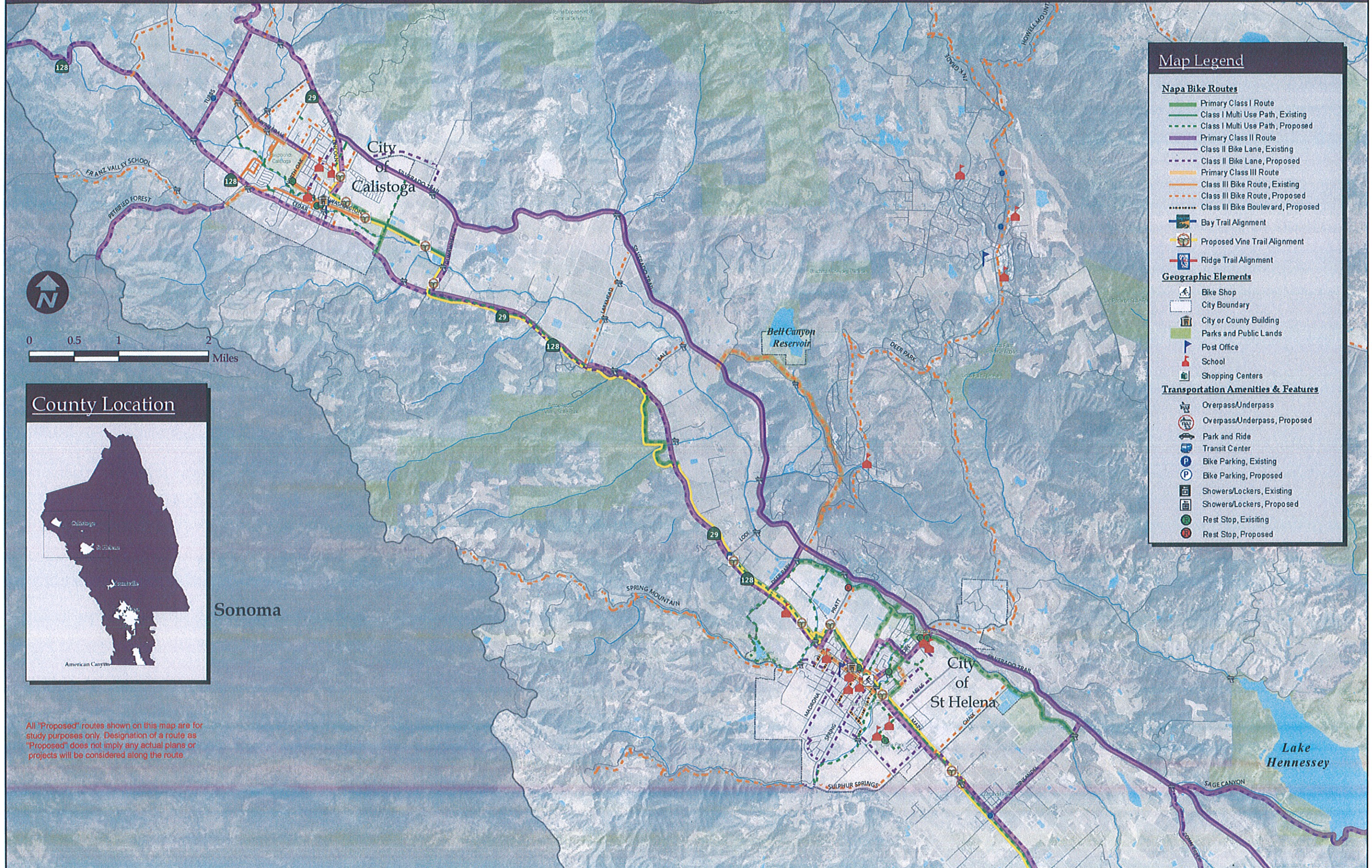
- Bike Shop
- City Boundary
- City or County Building
- Parks and Public Lands
- Post Office
- School
- Shopping Centers

Transportation Amenities & Features

- Overpass/Underpass
- Overpass/Underpass, Proposed
- Park and Ride
- Transit Center
- Bike Parking, Existing
- Bike Parking, Proposed
- Showers/Lockers, Existing
- Showers/Lockers, Proposed
- Rest Stop, Existing
- Rest Stop, Proposed

All "Proposed" routes shown on this map are for study purposes only. Designation of a route as "Proposed" does not imply any actual plans or projects will be considered along the route.

Planning Area - North Valley



Map Legend

Napa Bike Routes

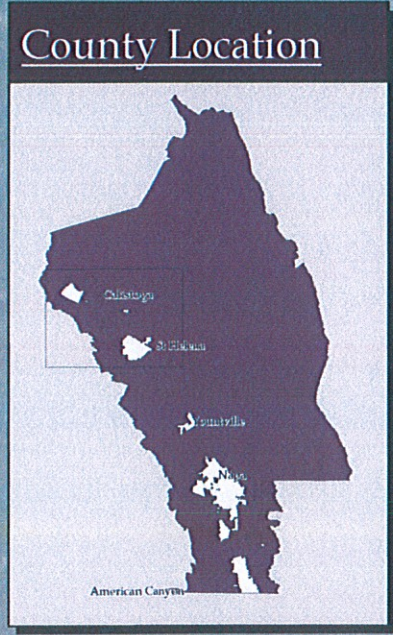
- Primary Class I Route
- Class I Multi Use Path, Existing
- Class I Multi Use Path, Proposed
- Primary Class II Route
- Class II Bike Lane, Existing
- Class II Bike Lane, Proposed
- Primary Class III Route
- Class III Bike Route, Existing
- Class III Bike Route, Proposed
- Class III Bike Boulevard, Proposed
- Bay Trail Alignment
- Proposed Vine Trail Alignment
- Ridge Trail Alignment

Geographic Elements

- Bike Shop
- City Boundary
- City or County Building
- Parks and Public Lands
- Post Office
- School
- Shopping Centers

Transportation Amenities & Features

- Overpass/Underpass
- Overpass/Underpass, Proposed
- Park and Ride
- Transit Center
- Bike Parking, Existing
- Bike Parking, Proposed
- Showers/Lockers, Existing
- Showers/Lockers, Proposed
- Rest Stop, Existing
- Rest Stop, Proposed

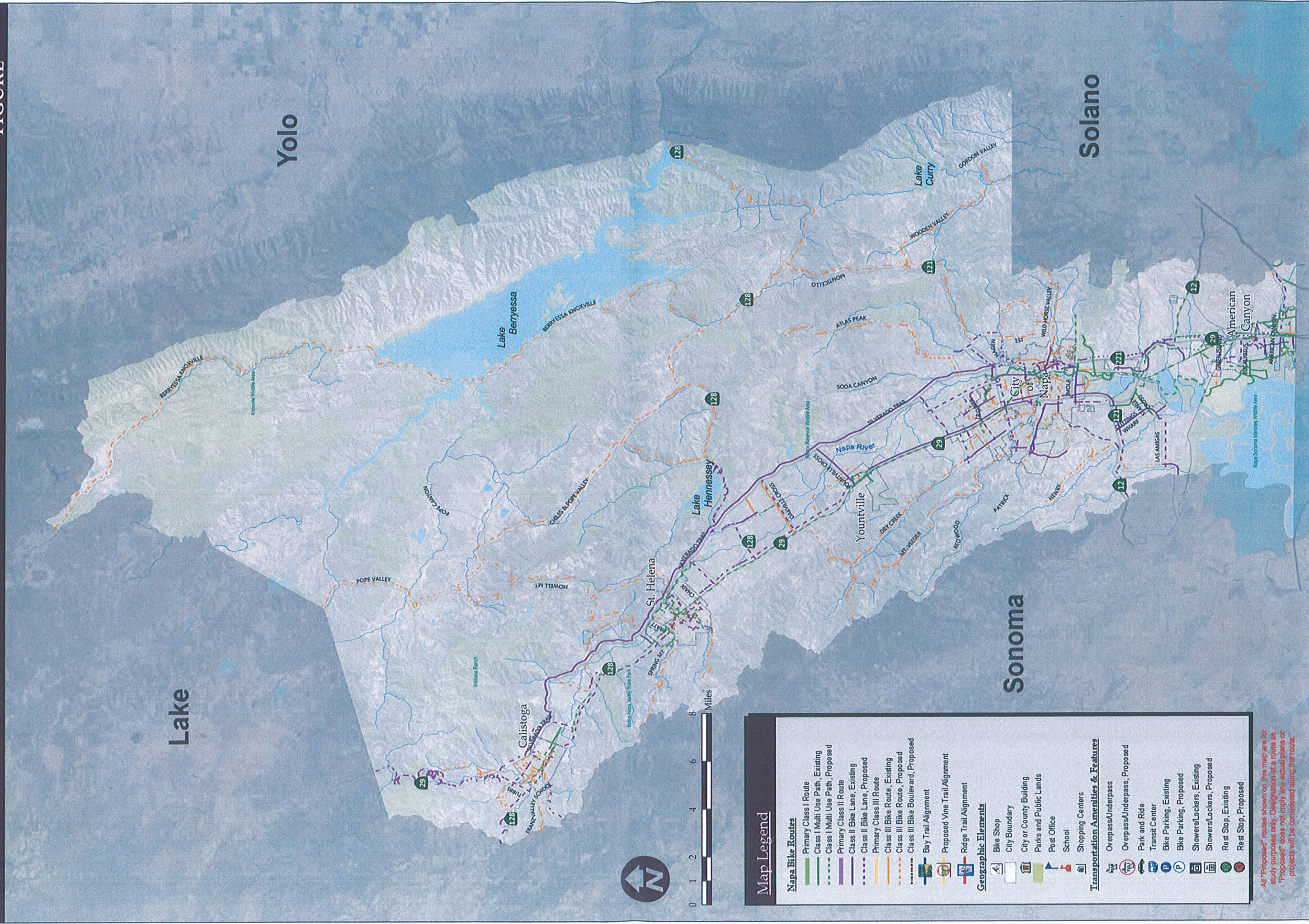


All "Proposed" routes shown on this map are for study purposes only. Designation of a route as "Proposed" does not imply any actual plans or projects will be considered along the route.

Napa County Bicycle Facilities

Napa Countywide Bicycle Plan

FIGURE

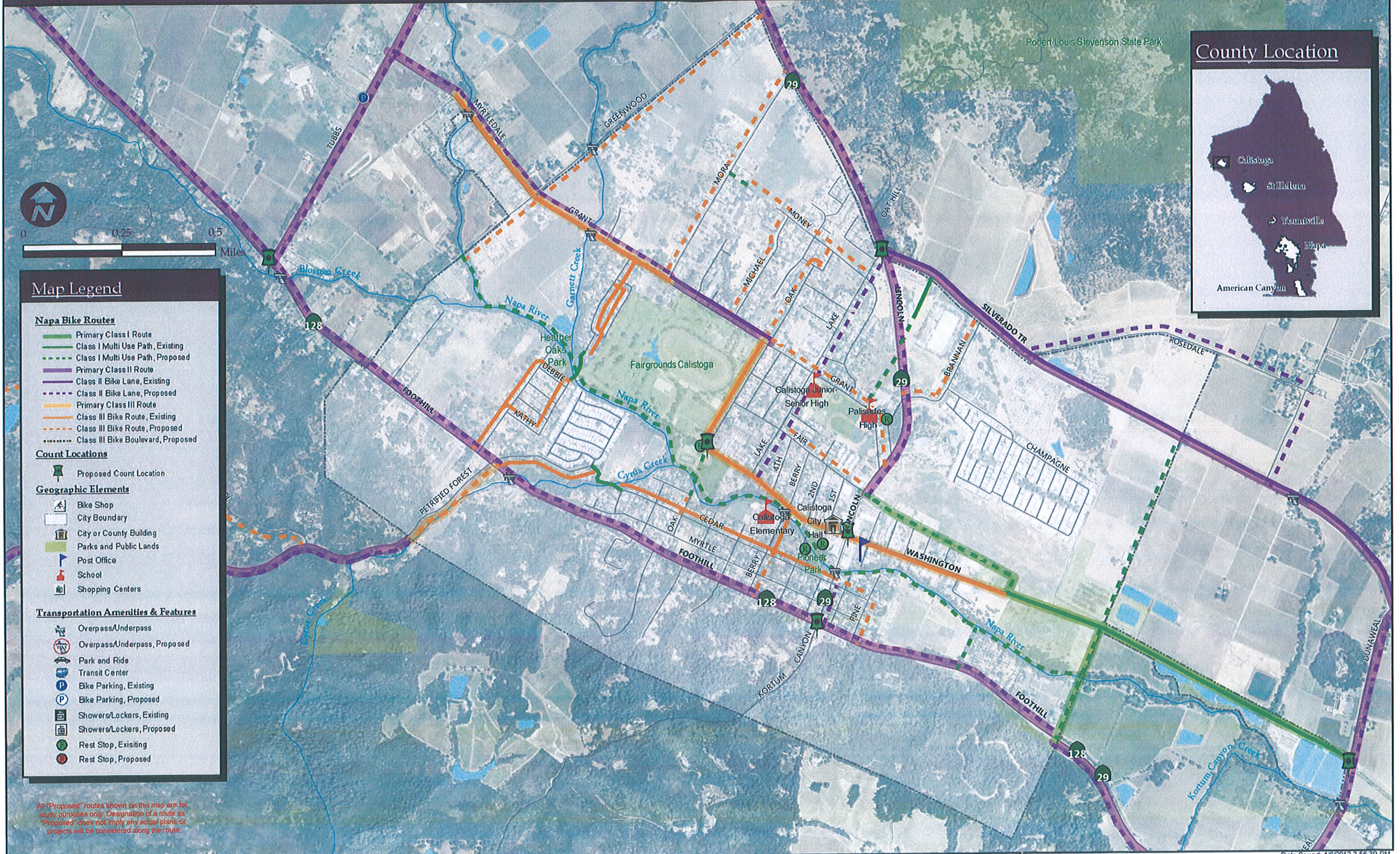


Map Legend

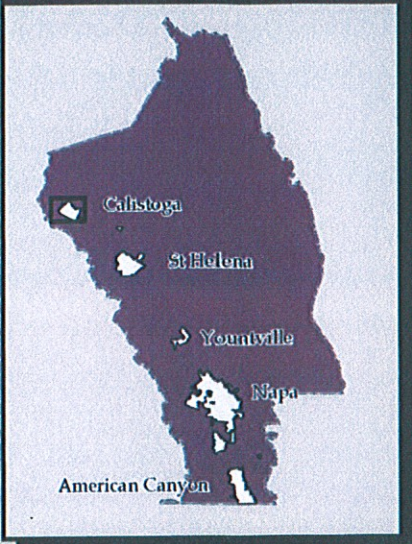
Napa Bike Routes	Geographic Elements	Transportation Amenities & Features
<ul style="list-style-type: none"> Primary Class I Route Class I Multi Use Path, Existing Class I Multi Use Path, Proposed Primary Class II Route Class II Bike Lane, Existing Class II Bike Lane, Proposed Primary Class III Route Class III Bike Route, Existing Class III Bike Route, Proposed Class III Bike Boulevard, Proposed Bay Trail Alignment Proposed Vine Trail Alignment Ridge Trail Alignment 	<ul style="list-style-type: none"> Bike Shop City Boundary City or County Building Parks and Public Lands Post Office School Shopping Centers 	<ul style="list-style-type: none"> Overpass/Underpass Overpass/Underpass, Proposed Park and Ride Transit Center Bike Parking, Existing Bike Parking, Proposed Showers/Lockers, Existing Showers/Lockers, Proposed Rest Stop, Existing Rest Stop, Proposed

All "Proposed" routes shown on this map are for study purposes only. Designation of a route as "Proposed" does not imply any actual plans or projects will be considered along the route.

City of Calistoga Bicycle Count Locations



County Location



Map Legend

Napa Bike Routes

- Primary Class I Route
- - - Class I Multi Use Path, Existing
- - - Class I Multi Use Path, Proposed
- Primary Class II Route
- - - Class II Bike Lane, Existing
- - - Class II Bike Lane, Proposed
- Primary Class III Route
- - - Class III Bike Route, Existing
- - - Class III Bike Route, Proposed
- - - Class III Bike Boulevard, Proposed

Count Locations

- Proposed Count Location

Geographic Elements

- Bike Shop
- City Boundary
- City or County Building
- Parks and Public Lands
- Post Office
- School
- Shopping Centers

Transportation Amenities & Features

- Overpass/Underpass
- Overpass/Underpass, Proposed
- Park and Ride
- Transit Center
- Bike Parking, Existing
- Bike Parking, Proposed
- Showers/Lockers, Existing
- Showers/Lockers, Proposed
- Rest Stop, Existing
- Rest Stop, Proposed

All "Proposed" routes shown on this map are for study purposes only. Designation of a route as "Proposed" does not imply any actual plans or projects will be considered along the route.

**Table 1
Required Bicycle Master Plan Elements**

California Bicycle Transportation Act (1994)	Bicycle Plan Reference
a. Estimated number of existing and future bicycle commuters	Existing – Table 2, Page 11 Proposed – Objective 1, Page 14
b. Map and description of land use settlement patterns	<i>Setting and Land Use</i> , Page 9
c. Map and description of existing and proposed bikeways	Map Figures 1, 2, 3 Existing – <i>Bikeways Inventory</i> , Page 39 Proposed – <i>Proposed Bikeway System</i> , Page 41
d. Map and description of bicycle parking facilities	Figure 1 – <i>Bikeways Map Bicycle Parking</i> , Page 40
e. Map and description of multi-modal connections	Figure 1 – <i>Bikeways Map Multi-Modal Connections</i> , Page 38
f. Map and description of facilities for changing and storing clothes and equipment	Figure 1 – <i>Bikeways Map Shower and Locker Facilities</i> , Page 41
g. Description of bicycle safety and education programs	<i>Safety, Education, and Support Programs</i> , Page 47
h. Description of citizen and community participation	<i>Public Participation</i> , Page 7
i. Description of consistency with transportation, air quality, and energy conservation plans	<i>Coordination and Consistency with Existing Plans and Policies</i> , Page 13
j. Description of proposed projects and implementation priorities	<i>Proposed Bikeway System</i> , Page 42 <i>Table 10 Proposed Bikeways and Project Priorities</i> , Page 42
k. Description of past expenditures and future financial needs for bicycle facilities	<i>Table 15 Historical Expenditures on Bicycle Facilities</i> , Page 59

Public Participation

The Bicycle Plan Update was developed over an 18-month period in 2010/11. The Plan was prepared by a consulting team working closely with NCTPA staff, a Project Steering Committee, local agency staff, Bicycle Advisory Committees or other responsible groups from the County and Napa’s cities, stakeholders, the bicycle community, and interested citizens. The 2011 Napa Countywide Bicycle Plan Update builds upon the efforts of the 2003 Plan and integrates new projects, partnerships, concepts, and programs. Public participation was an important component of the Countywide Bicycle Plan Update. The NCTPA and plan participants solicited public input on existing conditions for bicyclists, potential improvement projects and programs, and site-specific issues such as safety concerns, access, connectivity, bicycle parking, and other items needed to improve conditions for bicyclists in the Plan Area. The public participation process utilized an “advocacy” approach, where the general public and citizen representatives serving on advisory committees were instrumental in the development of a vision for bicycling in the community. The public participation process is summarized below.

- *Project Steering Committee* – A project steering committee comprised of local agency staff and citizen representatives was established to oversee the development and progress of the Plan. Representatives from the Napa County Bicycle Coalition, Vine Trail Coalition, Napa County Safe

Routes to Schools Program, Bay Trail Project, and Napa County Parks and Open Space, bicycle advocates and others also attended Steering Committee meetings.

- *Advisory Committee Meetings* – The project consultant and NCTPA staff attended bicycle or other responsible advisory committee meetings in each participating jurisdiction to kick off the project, collect input on issues and opportunities, and develop a vision and goals for the project. A second round of advisory committee meetings was conducted to review draft plans and project and program proposals.
- *Public Workshop #1* – The initial public workshop for the Bicycle Plan Update was held on Saturday, October 23, 2010, from 10:30 a.m. to 12:30 p.m. at the Yountville Community Center. Approximately 65 people attended the workshop, including local agency staff, elected officials, NCTPA board members, local bicycle advocates, and members of public. The purpose of the workshop was to collect input on issues, opportunities, and constraints throughout the Plan Area. Attendees were led through a series of small and large group exercises designed to solicit their input using a slide presentation, mapping exercise, issues discussion, and a visioning exercise.
- *Staff Interviews* – Members of local agency staff responsible for bikeway implementation and maintenance were interviewed to solicit their input on existing conditions, issues, opportunities, and constraints regarding Napa's bikeway system and programs.
- *Public Workshop #2* – Public Workshop #2 was held on Saturday, September 24, 2011, from 1:00 to 4:00 p.m. at New Technology High School in the City of Napa. Approximately 50 people attended the workshop, including local agency staff, elected officials, NCTPA board members, local bicycle advocates, and members of public. The purpose of the meeting was to give the public an opportunity to comment on the draft Bicycle Plan Update. The draft Plan was presented and attendees participated in group discussions and mapping exercises. Public comments were recorded and incorporated into the Bicycle Plan Update.
- *City Council Hearings* – In early 2012, the Plan will be presented to the City Council for review and adoption.