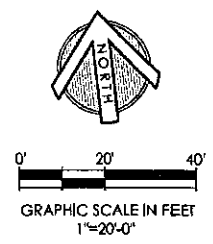


RECEIVED
 JUL 16 2013
 CITY OF CALISTOGA



LANDSCAPE MASTER PLAN
 JULY 10, 2013

PIONEER PARK
 1308 CEDAR STREET, CALISTOGA, CA

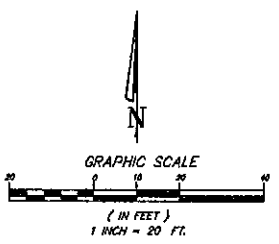
THIS PLAN IS PRELIMINARY AND NOT INTENDED FOR CONSTRUCTION. GSN LANDSCAPE ARCHITECTS, INC. WILL NOT BE RESPONSIBLE FOR, OR LIABLE FOR, UNAUTHORIZED CHANGES TO OR USES OF THESE PLANS. ALL CHANGES TO THE PLAN MUST BE IN WRITING AND MUST BE APPROVED BY GSN LANDSCAPE ARCHITECTS, INC. THIS DOCUMENT AND THE IDEAS INCORPORATED HEREIN ARE AN INSTRUMENT OF PROFESSIONAL SERVICE, IS THE PROPERTY OF GSN LANDSCAPE ARCHITECTS, INC. AND IS NOT TO BE USED IN ANY OTHER PROJECT OR PROJECTS WITHOUT THE WRITTEN APPROVAL OF GSN LANDSCAPE ARCHITECTS, INC. © COPYRIGHT 2013. ALL RIGHTS RESERVED.

LEGEND:

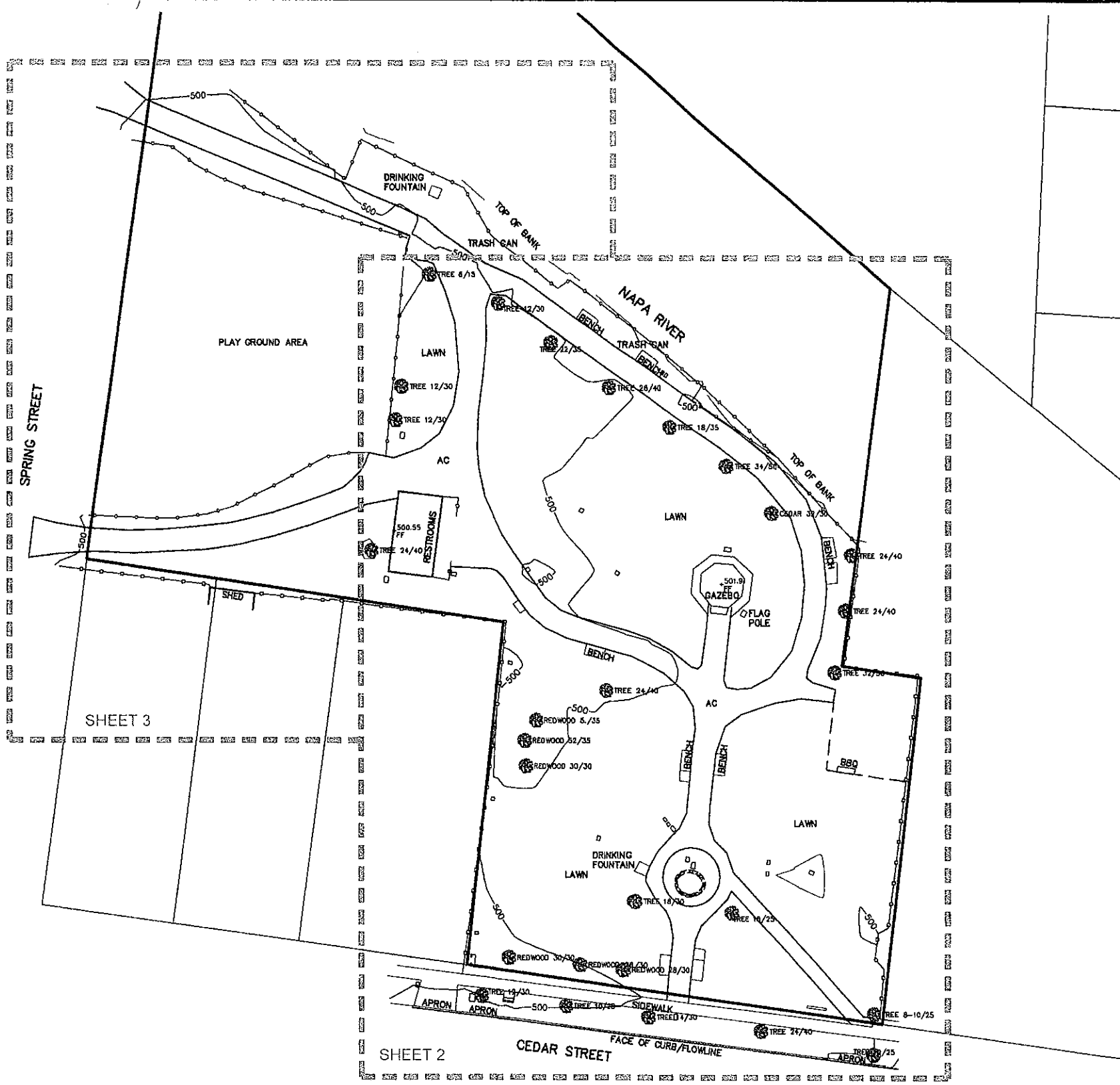
- DI ELEC
- OUT
- R/W
- JOINT POLE
- HOSE BID
- UTILITY POLE
- GUY ANCHOR
- POWER POLE
- SERVICE POLE
- TEST PIT
- WATER WELL
- WATER VALVE
- BLACK OAK
- MADROÑE
- LIVE OAK
- WHITE OAK
- TREE TRUNK DIA. IN INCHES, DRUPLINE IN FEET
- 1' CONTOUR
- 5' CONTOUR
- NAPA COUNTY GIS LINES; SEE DRAWING NOTES
- EDGE OF DIRT/GRAVEL ROAD
- EDGE OF ASPHALT/CONCRETE PAVEMENT
- WIRE FENCE
- WOOD FENCE
- CHAIN LINK FENCE
- FLOW LINE OF CREEK OR DRAINAGE DITCH
- GRADE BREAK-TOP/IDE

DRAWING NOTES:

THIS MAP IS NOT A BOUNDARY SURVEY. IT IS PROVIDED TO LOCATE THE PROPOSED SUBJECT PROPERTY IN RELATION TO ADJOINING LANDS, HIGHWAYS, ROADS, STREETS AND NOT TO GUARANTEE ANY FIXED DIMENSION OR ACREAGE. A FIELD SURVEY SHOULD BE PERFORMED PRIOR TO ANY CRITICAL DESIGN WORK, CONSTRUCTION OR CONVEYANCE. EASEMENTS MAY AFFECT THIS PROPERTY. THIS SURVEYOR WAS NOT PROVIDED ANY INFORMATION REGARDING EASEMENTS BY THE OWNER.



CONTOUR INTERVAL = 1'
 VERTICAL DATUM ASSUMED
 DIRECTION OF NORTH BASED ON
 COMPASS SIGHTING
 FB# 658/57



RECEIVED
 JUL 16 2013
 CITY OF CALISTOGA

MAP OF TOPOGRAPHY
 of the Lands of
 CITY OF CALISTOGA
 (PIONEER PARK)
 Cedar St. x Spring St., Calistoga, CA 94515
 SITUATED IN THE
 CITY OF CALISTOGA, COUNTY OF NAPA,
 STATE OF CALIFORNIA

BY
 NEW ALBION SURVEYS INC.
 ST. HELENA, CALIFORNIA



NAPA COUNTY A.P. NO. 011-223-003
 APRIL, 2013

