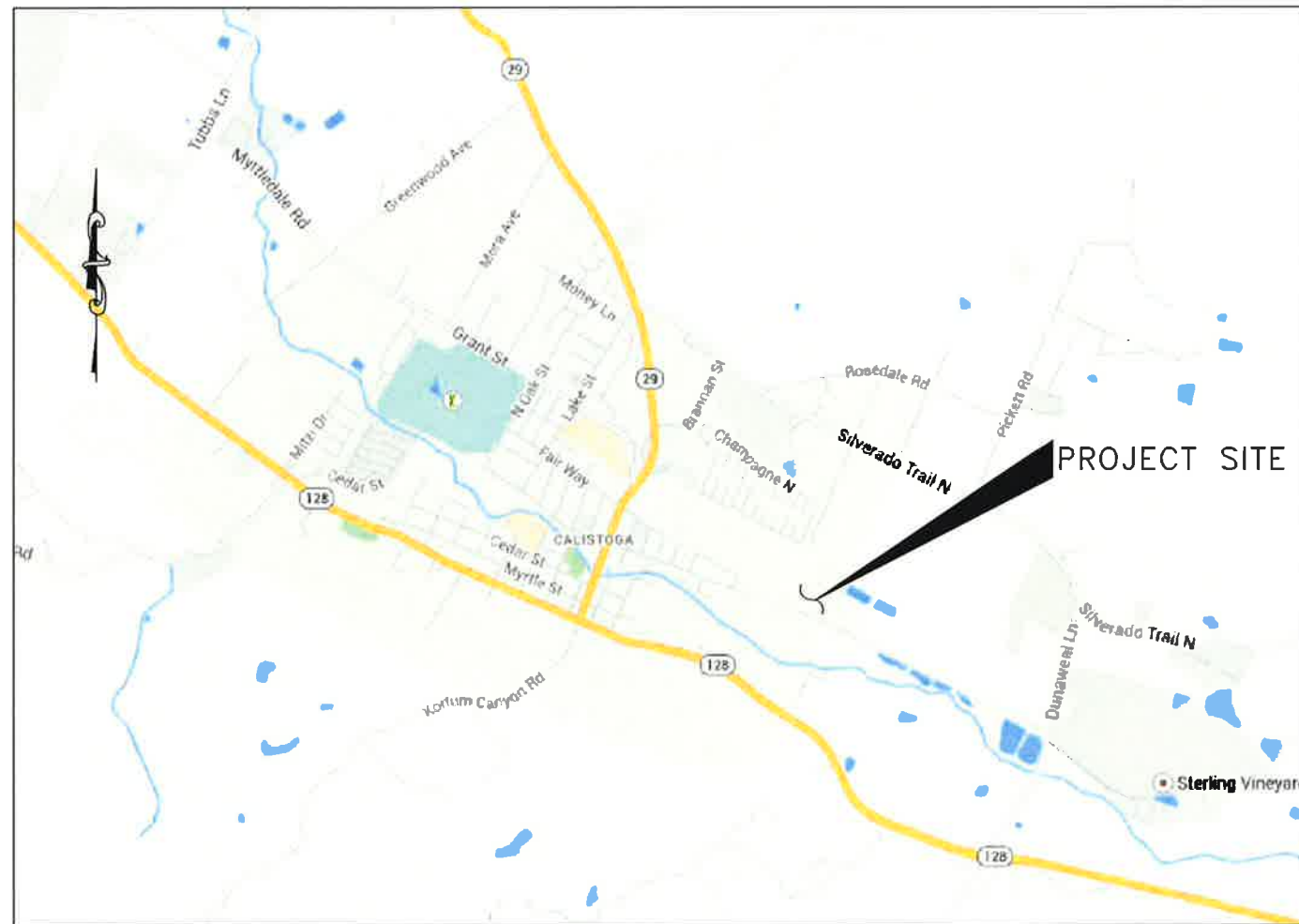
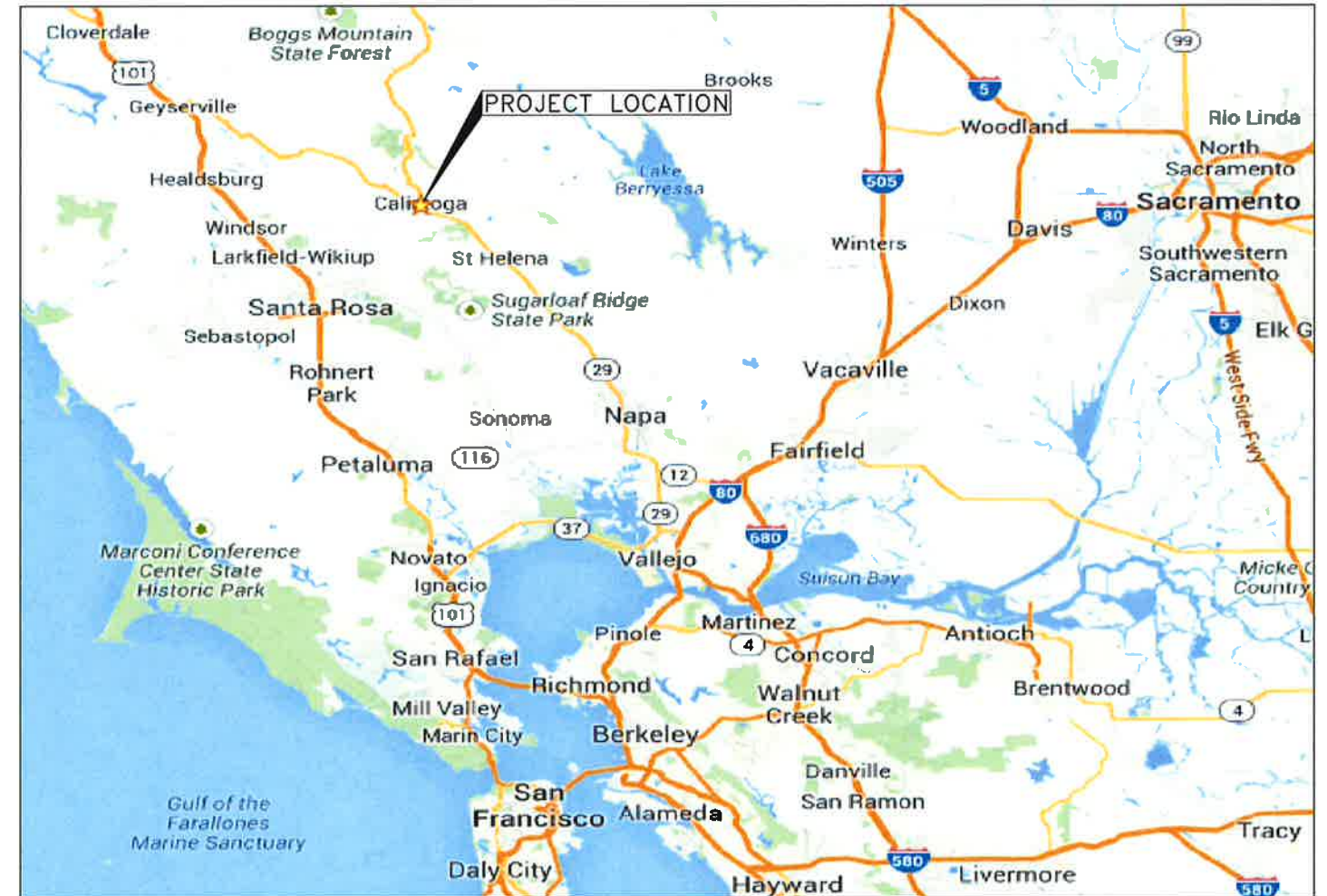


EFFLUENT STORAGE POND

CITY OF CALISTOGA UTILITIES DEPARTMENT, CALISTOGA, CALIFORNIA



LOCATION MAP
SCALE: NTS



VICINITY MAP
SCALE: NTS

DRAFT 100% SUBMITTAL
SEPT 2014



NOT FOR
CONSTRUCTION

File: 05_2014_100000_100000_000 Recycled Water Pond (RLO Design Services) Sheet11 COVER SHEET.dwg

ABBREVIATIONS

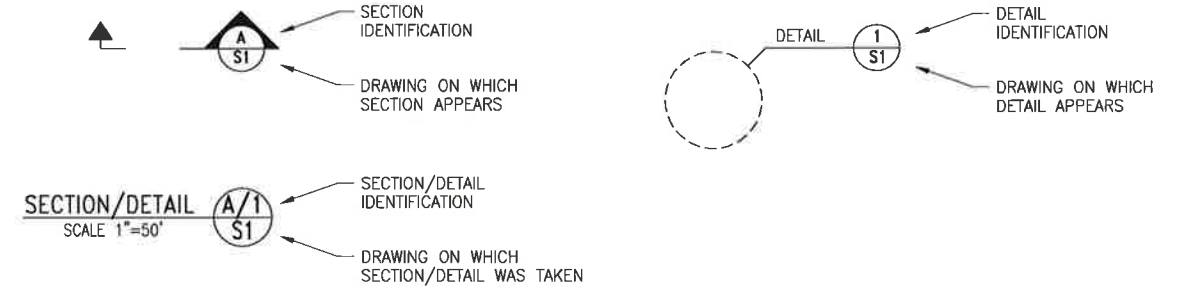
AB	AGGREGATE BASE	PL, P	PLATE OR PROPERTY LINE
AC	ASPHALT CONCRETE	PS	PUMP STATION
ADD	ADDITION(AL)	PVC	POLYVINYL CHLORIDE
ALT	ALTERNATE	PVMT	PAVEMENT
APPROX	APPROXIMATE		
ASSY	ASSEMBLY	R	RADIUS, RISER
AV	AIR VALVE	RCL	RECLAIMED WATER LINE
AVG	AVERAGE	RD	ROAD
		REF	REFERENCE
		REQ'D	REQUIRED
		RT	RIGHT
		S	SLOPE
BLDG	BUILDING	SCH	SCHEDULE
BOT	BOTTOM	SECT	SECTION
BO	BLOW-OFF	SHT	SHEET
BOF	BOTTOM OF FOOTING		
BRG	BEARING		
		SIM	SIMILAR
		SPEC	SPECIFICATION(S)
CB	CATCH BASIN	SQ	SQUARE
CF	CUBIC FEET	SS	SANITARY SEWER
CI	CAST IRON	STD	STANDARD
CJ	CONSTRUCTION JOINT	STL	STEEL
CLR	CLEARANCE	SD	STORM DRAIN
CLSM	CONTROLLED LOW STRENGTH MATERIAL	STRUCT	STRUCTURE
CO	CLEAN OUT	SURF	SURFACE
CONC	CONCRETE		
CONST	CONSTRUCTION	TYP	TYPICAL
CTR	CENTER		
CY	CUBIC YARD		
		UG	UNDERGROUND
DI	DUCTILE IRON	UON	UNLESS OTHERWISE NOTED
DIA	DIAMETER		
DIAG	DIAGRAM	V	VALVE
DIM	DIMENSION	VERT	VERTICAL
DWG	DRAWING	VIF	VERIFY IN FIELD
		VOL	VOLUME
EL	ELEVATION	W/	WITH
ELEC	ELECTRICAL	W	WIDTH, WEST, WATER
EQ	EQUAL	WS	WATER SURFACE
EQUIP	EQUIPMENT	WSL	WATER SURFACE LEVEL
EPR	EROSION PROTECTION ROCK	WV	WATER VALVE
EXIST	EXISTING		
EXP	EXPANSION		
		YD	YARD
FDN	FOUNDATION	(N)	NEW
FG	FINISHED GRADE	(E)	EXISTING
FL	FLOW LINE		
FT	FOOT		
GV	GATE VALVE		
H	HEIGHT		
HORIZ.	HORIZONTAL		
ID	INSIDE DIAMETER		
IN	INCH		
INFO	INFORMATION		
INST	INSTRUMENTATION		
INV	INVERT		
IRR	IRRIGATION		
JT	JOINT		
L	LENGTH		
LB	POUND		
LT	LEFT		
MAX	MAXIMUM		
MCA	MATERIAL CLASSIFICATION AREA		
MFR	MANUFACTURE(R)		
MH	MANHOLE		
MIN	MINIMUM, MINUTE		
MISC	MISCELLANEOUS		
NOM	NOMINAL		
NTS	NOT TO SCALE		
OC	ON CENTER		
OD	OUTSIDE DIAMETER		
OF	OUTSIDE FACE		
OG	ORIGINAL GROUND SURFACE		

SYMBOLS

	CENTER LINE
	EXPLORATORY BORING
	DIAMETER
	TREE, SHRUB
	WATER LEVEL ELEVATION
	AIR VALVE
	BLOW-OFF
	BACKFLOW
	WATER VALVE
	MANHOLE (STORM DRAIN)
	MANHOLE (SANITARY SEWER)
	NUMBER
	NATURAL GROUND OR GRADE
	BACKFILL
	AC BERM
	SLOPE GRADIENT (HOR. : VERT.)
	STORM DRAIN MANHOLE
	WATER VALVE
	CATCH BASIN
	FENCE
	SILT FENCE
	CONSTRUCTION FENCE
	CENTER LINE
	FLOW LINE

TYPICAL SECTION/ELEVATION/DETAIL SYSTEM

SECTIONS & ELEVATIONS ARE DESIGNATED BY LETTER. DETAILS ARE DESIGNATED BY NUMBERS.



DRAWING INDEX	
SHEET NUMBER	TITLE
	COVER SHEET
G1	DRAWING INDEX ABBREVIATIONS AND SYMBOLS
G2	GENERAL NOTES
G3	SITE ACCESS AND STAGING PLAN
D1	DEMOLITION PLAN
C1	SITE PLAN AND EXISTING CONDITIONS
C2	GRADING PLAN
C3	EMBANKMENT DETAILS
C4	ENVIRONMENTAL MITIGATION
C5	RAIL CAR BRIDGE DETAIL
M1	EXISTING PIPELINE, FITTINGS AND APPURTENANCES
M2	NEW PIPELINE, FITTINGS AND APPURTENANCES

NOT FOR CONSTRUCTION

Sep 09, 2014 - 1:01pm E:\Work\Xenosel_Restorat\300_Respected Water Pond\B.D. Design_Services\Sheets\01.dwg

REVISIONS			
NO.	DESCRIPTIONS	BY	DATE

CITY OF CALISTOGA
1232 WASHINGTON ST
CALISTOGA, CALIFORNIA 94515



DRAWN BY:	C SOMERA
DESIGNED BY:	M PATEL
CHECKED BY:	C SMITH
APPROVED BY:	C SMITH

URS
1333 Broadway, Ste. 800
Oakland, Ca 94612
Tel: 510-893-3600

EFFLUENT STORAGE POND
CITY OF CALISTOGA
DRAWING INDEX, ABBREVIATIONS AND SYMBOLS

URS JOB NO. 2681894
DATE SEPTEMBER 5, 2014
SCALE AS SHOWN
SHEET ____ OF ____ SHEETS
SHEET NO. G1

GENERAL NOTES:

- NOTES, TYPICAL DETAILS, AND SCHEDULES APPLY TO ALL WORK, UNLESS OTHERWISE NOTED. FOR CONDITIONS NOT SPECIFICALLY SHOWN, CONTRACTOR SHALL PROPOSE A VIABLE DETAIL TO THE ENGINEER FOR REVIEW AND APPROVAL.
- FIELD-VERIFY ALL EXISTING CONDITIONS, INCLUDING ALL EXISTING AND NEW DIMENSIONS, PRIOR TO THE START OF WORK. ANY APPROVAL OF SUBMITTALS OR SHOP DRAWINGS BY THE ENGINEER SHALL NOT RELIEVE CONTRACTOR OF HIS RESPONSIBILITIES. IT IS CONTRACTOR'S SOLE RESPONSIBILITY TO MEET ALL REQUIREMENTS OF CONTRACT PLANS, CONTRACT SPECIFICATIONS, CURRENT CODES, INDUSTRY STANDARDS AND PRACTICES, AND ALL OTHER APPLICABLE STANDARDS.
- CONTRACTOR SHALL COORDINATE STRUCTURAL DRAWINGS WITH PLUMBING, MECHANICAL, AND ELECTRICAL UTILITIES PRIOR TO THE START OF WORK. CONTRACTOR SHALL NOTIFY THE ENGINEER OF ANY DISCREPANCY. DO NOT PROCEED WITH WORK UNTIL DISCREPANCY HAS BEEN RESOLVED.
- UNLESS OTHERWISE NOTED, USE TYPICAL DETAILS WHERE APPLICABLE. VERIFY APPLICABILITY WITH THE ENGINEER IF NEEDED.
- NOTES AND DETAILS SHOWN ON A PARTICULAR DRAWING SHALL TAKE PRECEDENCE OVER GENERAL NOTES AND TYPICAL DETAILS.
- DIMENSIONS SHALL TAKE PRECEDENCE OVER GENERAL NOTES AND TYPICAL DETAILS.
- CONTRACTOR SHALL SUBMIT SHOP DRAWINGS AS REQUIRED BY SPECIFICATIONS TO THE ENGINEER FOR REVIEW AND APPROVAL PRIOR TO START OF FABRICATION.
- CONTRACTOR SHALL BE SOLELY RESPONSIBLE FOR THE SAFETY OF ALL PERSONNEL AND THE PROTECTION OF ALL PROPERTY ON THE PROJECT SITE AT ALL TIMES. THE PRESENCE OF THE ENGINEER SHALL NOT RELIEVE CONTRACTOR OF HIS RESPONSIBILITIES. SHOULD ANY DAMAGE TO EXISTING PROPERTY OCCUR, CONTRACTOR SHALL SUBMIT PROPOSED REMEDY TO THE ENGINEER FOR REVIEW AND APPROVAL AND REPAIR THE DAMAGE TO THE SATISFACTION OF THE ENGINEER AT NO COST TO THE CITY.
- CONTRACTOR SHALL SUBMIT ANY SUBSTITUTION OF SPECIFIED MATERIAL TO THE ENGINEER FOR REVIEW AND APPROVAL PRIOR TO INSTALLATION. REFER TO GENERAL CONDITION OF CONTRACT SPECIFICATION FOR THE MINIMUM NUMBER OF DAYS REQUIRED FOR THE ENGINEER'S REVIEW AND APPROVAL. ANY DELAY AS A RESULT OF NONCONFORMANCE TO THIS REQUIREMENT SHALL BE THE SOLE RESPONSIBILITY OF THE CONTRACTOR.
- THE CONTRACTOR'S TEMPORARY MEASURES SHALL BE ARRANGED OR DESIGNED SO AS NOT TO ALTER OR AFFECT THE PERMANENT STRUCTURE.
- DO NOT SCALE DRAWINGS, USE DIMENSIONS SHOWN.
- INSTALL ALL WORK PLUMB, LEVEL AND STRAIGHT.
- INSTALL MANUFACTURED MATERIALS AND EQUIPMENT ACCORDING TO MANUFACTURERS RECOMMENDATIONS AND INSTRUCTIONS.
- IT IS THE RESPONSIBILITY OF THE CONTRACTOR TO BE KNOWLEDGEABLE ABOUT AND OBEY ALL PERMIT REQUIREMENTS WHILE PERFORMING THE WORK SHOWN ON THESE PLANS.
- THE CONTRACTOR SHALL HAVE COPIES OF THE APPROVED PLANS AND SPECIFICATIONS FOR THIS PROJECT ON THE SITE AT ALL TIMES, AND THE CONTRACTOR SHALL BE FAMILIAR WITH ALL APPLICABLE STANDARDS AND SPECIFICATIONS.

FOUNDATION DESIGN:

- ALL SITE GRADING, FILLS AND SOIL PREPARATION SHALL CONFIRM TO THE SPECIFICATIONS AND ALL WORK SHALL BE UNDER THE SUPERVISION OF THE CITY & URS GEOTECHNICAL REPRESENTATIVE, AND A MATERIAL TESTING LABORATORY HIRED OR EMPLOYED BY THE CONTRACTOR

EARTHWORK SUMMARY AND NOTES:

CUT: 52170 CY
 FILL: 43210 CY
 TOTAL STORAGE VOLUME: 50 AF
 IMPOUNDED VOLUME: 29 AF

THE VOLUMES SHOWN HERE ARE APPROXIMATE CALCULATIONS BASED ON THE DIFFERENCE BETWEEN EXISTING GROUND ELEVATIONS AND FINISHED ROUGH GRADE ELEVATIONS. THE CALCULATIONS MAKE NO PROVISION FOR STRIPPING OR UNEXCAVATION. FOR THIS REASON AND BECAUSE OF VARIABLES SUCH AS COMPACTION, SHRINKAGE, BULKING AND THE CONTRACTOR'S METHODS OF OPERATION, THE VOLUME OF SOIL MOVED IN THE FIELD WILL IN ALL LIKELIHOOD DEVIATE TO SOME EXTENT FROM THE CALCULATED VOLUME. THE EARTHWORK SUMMARY DOES NOT RELIEVE THE CONTRACTOR OF THEIR RESPONSIBILITY TO DETERMINE ON THEIR OWN THE QUANTITY OF EARTH MOVING THAT WILL BE REQUIRED TO GRADE THIS JOB. IT IS ASSUMED THAT THE CONTRACTOR'S BID PRICE FOR GRADING IS BASED ON THE CONTRACTOR'S OWN EARTHWORK ESTIMATE AND INCLUDED PROVISIONS FOR ANY GRADE ADJUSTMENT REQUIRED TO BRING THE JOB TO FINISHED GRADE.

ENVIRONMENTAL MITIGATION

- CONSTRUCTION WILL AVOID ALL IMPACTS TO THE BED, BANK, WATER QUALITY, OR HABITAT WITHIN THE EXISTING DRAINAGE SWALES THROUGH ENVIRONMENTALLY SENSITIVE AREA FENCING.
- IF WORK IS PERFORMED DURING THE NESTING SEASON OR MIGRATORY BIRDS AND RAPTORS (APPROXIMATE FEBRUARY 15 TO AUGUST 31) A QUALIFIED BIOLOGIST WILL CONDUCT PRE-CONSTRUCTION NESTING BIRD SURVEYS IN THE CONSTRUCTION AREA PRIOR TO GROUND DISTURBING ACTIVITIES.
- IN THE EVENT A SPECIAL-STATUS SPECIES IS ENCOUNTERED IN THE CONSTRUCTION LIMITS, WORK ACTIVITIES IN THE ACTION AREA WILL BE HALTED IMMEDIATELY AND THE APPROPRIATE AGENCY WILL BE CONTACTED.

DATUM

VERTICAL DATUM: NAVD88
 HORIZONTAL DATUM: CALIFORNIA SYSTEM, ZONE 2, NAD83

SURVEY

SURVEY BY URS, MAY 2014

EXISTING UTILITIES

- CONTRACTOR SHALL NOTIFY UNDERGROUND SERVICE ALERT (USA) PRIOR TO DIGGING.
- LOCATIONS OF ALL UTILITY SERVICE LINES SHOWN ON THE DRAWINGS ARE APPROXIMATE ONLY AND SHALL BE FIELD VERIFIED BY POTHOLING PRIOR TO COMMENCING ANY GRADING, TRENCHING OR TUNNEL EXCAVATION.
- UTILITIES, EXISTING AT THE TIME OF CONSTRUCTION, ARE SHOWN ON THESE PLANS FOR CONVENIENCE OF THE CONTRACTOR. THE EXISTENCE AND LOCATION OF UNDERGROUND UTILITY PIPES AND/OR STRUCTURES, AS SHOWN, ARE BASED ON INFORMATION OBTAINED FROM AVAILABLE RECORDS AND/OR IN ACCORDANCE WITH TYPICAL LOCATIONS NOTED IN AGENCY STANDARDS.
- THE CONTRACTOR SHALL TAKE PRECAUTIONARY MEASURES TO PROTECT UTILITY LINES AND STRUCTURES SHOWN AS WELL AS ANY AND ALL OTHERS NOT OF RECORD OR NOT SHOWN ON THESE PLANS. EXISTING UTILITY SERVICE LATERALS ARE SPECIFICALLY NOT SHOWN ON THESE PLANS AND ARE TO BE PROTECTED BY THE CONTRACTOR DURING PIPELINE CONSTRUCTION.
- ALL CONTRACTOR WORK AROUND EXISTING UTILITIES SHALL BE IN CONFORMANCE WITH CALIFORNIA GOVERNMENT CODE 4216.
- THE CONTRACTOR SHALL PROTECT IN PLACE ALL OVERHEAD INTERFERENCE. THE CONTRACTOR SHALL USE EXTREME CAUTION WHEN WORKING NEAR OVERHEAD OR UNDERGROUND POWER, GAS, AND/OR OTHER UTILITIES SO AS TO SAFELY PROTECT ALL PERSONNEL AND EQUIPMENT, AND SHALL BE RESPONSIBLE FOR ALL COSTS AND LIABILITY IN CONNECTION THEREWITH.

DEMOLITION NOTES

- CLEAR AND REMOVE ALL ORGANIC MATTER, DEBRIS, AND RUBBISH FROM WITHIN THE LIMIT OF WORK. CONTRACTOR SHALL DISPOSE OF SAID MATERIAL IN A LEGAL MANNER AS HIS PROPERTY.
- CONTRACTOR MAY RE-USE MATERIAL SUBJECT TO SUBMITTALS PER SPECIFICATION AND REVIEW BY THE CITY REPRESENTATIVE.
- SAVE AND STOCKPILE TOPSOIL FOR USE ON EXPOSED CUT AND FILL AREAS.

PROJECT CONTACTS

OWNER: CITY OF CALISTOGA
 PUBLIC WORKS DEPARTMENT
 414 WASHINGTON STREET
 CALISTOGA, CA 94515
 PHONE: (707) 942-2828

ENGINEER: URS CORPORATION
 1333 BROADWAY, SUITE 800
 OAKLAND, CA 94612
 PHONE: (510) 893-3600

CALISTOGA FIRE DEPARTMENT: (707) 942-2840
 CALISTOGA POLICE DEPARTMENT: (707) 942-2810

NOT FOR CONSTRUCTION

c:\planning_somera Sep 09, 2014 - 3:05pm E:\Work\omega_reserve\1000 Recycled Water Plant\B.D. Design Services\Sheets\G2.dwg

NO.	REVISIONS DESCRIPTIONS	BY	DATE

CITY OF CALISTOGA
 1232 WASHINGTON ST
 CALISTOGA, CALIFORNIA 94515



DRAWN BY: C SOMERA
 DESIGNED BY: M PATEL
 CHECKED BY: C SMITH
 APPROVED BY: C SMITH



EFFLUENT STORAGE POND
 CITY OF CALISTOGA

GENERAL NOTES

URS JOB NO. 26818094
 DATE SEPTEMBER 5, 2014
 SCALE AS SHOWN
 SHEET ___ OF ___ SHEETS
 SHEET NO. G2



PLAN
SCALE: NTS



PLAN
SCALE: NTS

NOTES:

1. ALL EARTHWORK ACTIVITY SHALL BE PERFORMED THROUGH THE PRIMARY SITE ACCESS.
2. USE OF SECONDARY SITE ACCESS SHALL BE LIMITED AND AS AUTHORIZED BY THE CITY.

NOT FOR CONSTRUCTION

Sep 09, 2014 - 1:02pm E:\Work\Kimsop - Reservoirs\300 Reservoir Water Pond\A.D. Design Services\Sheet3 G3.dwg
 chiviana_somero

NO.	REVISIONS DESCRIPTIONS	BY.	DATE

CITY OF CALISTOGA
1232 WASHINGTON ST
CALISTOGA, CALIFORNIA 94515

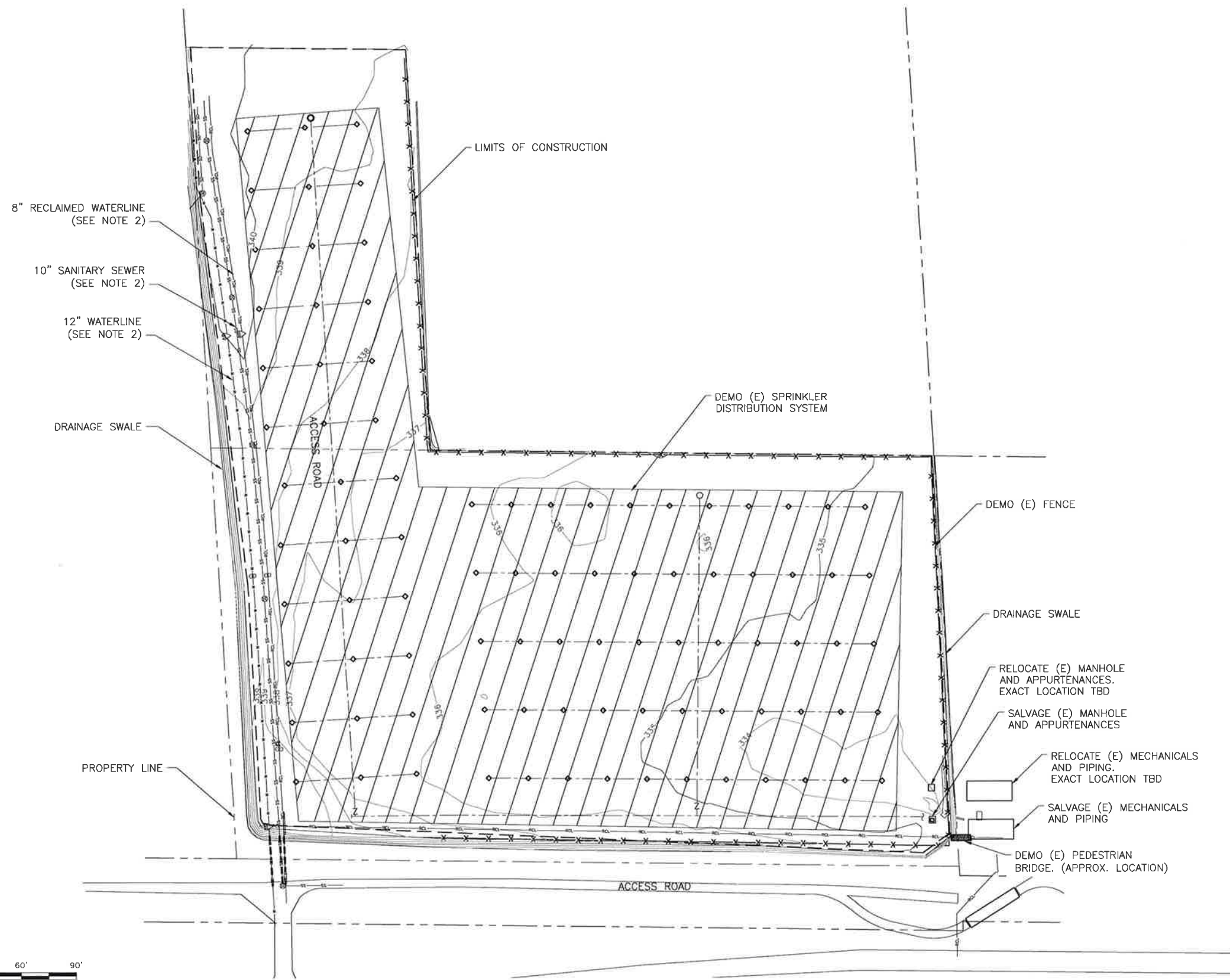


DRAWN BY: C SOMERA
 DESIGNED BY: M PATEL
 CHECKED BY: C SMITH
 APPROVED BY: C SMITH

URS
 1333 Broadway, Ste. 800
 Oakland, Ca 94612
 Tel: 510-893-3600

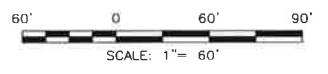
EFFLUENT STORAGE POND
 CITY OF CALISTOGA
 STAGING AND ACCESS ROAD PLAN

URS JOB NO. 26218894
 DATE SEPTEMBER 5, 2014
 SCALE AS SHOWN
 SHEET ___ OF ___ SHEETS
 SHEET NO. G3



- LEGEND:**
- AIR VALVE
 - BLOW-OFF
 - BACKFLOW
 - WATER VALVE
 - MANHOLE (STORM DRAIN)
 - MANHOLE (SANITARY SEWER)
 - SPRINKLER ASSEMBLY
 - MANIFOLD ASSEMBLY
 - UNDERGROUND SPRINKLER PIPE
 - FENCE

- NOTE:**
- LOCATION OF SPRINKLER ASSEMBLY, RELATED PIPES, AND COMPACTED EARTH DIKE ARE APPROXIMATE AND ARE OBTAINED FROM "SPRINKLER DISTRIBUTION SYSTEM PLAN" BY KENNEDY ENGINEERS, INC. PROVIDED BY THE CITY.
 - PROTECT EXISTING RECLAIMED WATER, SANITARY SEWER AND WATER UTILITY LINES
 - CHECK WITH CITY ON SALVAGE OF ANY DEMO. OTHERWISE ALL DEMO SHALL BE REMOVED FROM SITE BY CONTRACTOR AND DISPOSED IN A SAFE MANNER.



PLAN
SCALE: 1"=60'

NOT FOR CONSTRUCTION

NO.	REVISIONS DESCRIPTIONS	BY	DATE

CITY OF CALISTOGA
1232 WASHINGTON ST
CALISTOGA, CALIFORNIA 94515



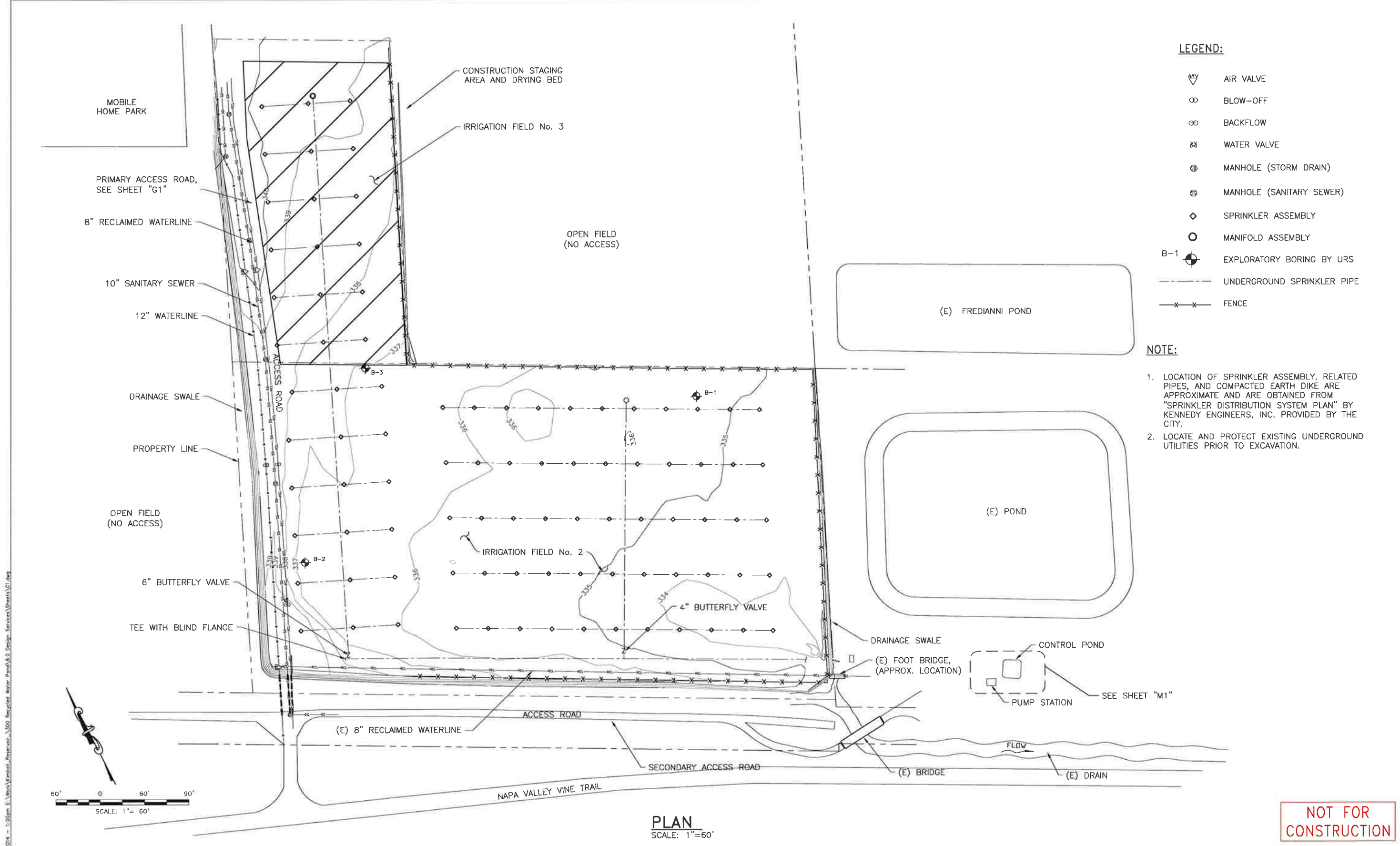
DRAWN BY: C SOMERA
DESIGNED BY: L TAM
CHECKED BY: C SMITH
APPROVED BY: C SMITH

URS
1333 Broadway, Ste. 800
Oakland, Ca 94612
Tel: 510-893-3600

EFFLUENT STORAGE POND
CITY OF CALISTOGA

DEMOLITION PLAN

URS JOB NO. 26818894
DATE SEPTEMBER 5, 2014
SCALE AS SHOWN
SHEET ___ OF ___ SHEETS
SHEET NO. D1



- LEGEND:**
- AIR VALVE
 - BLOW-OFF
 - BACKFLOW
 - WATER VALVE
 - MANHOLE (STORM DRAIN)
 - MANHOLE (SANITARY SEWER)
 - SPRINKLER ASSEMBLY
 - MANIFOLD ASSEMBLY
 - B-1 EXPLORATORY BORING BY URS
 - UNDERGROUND SPRINKLER PIPE
 - FENCE

- NOTE:**
1. LOCATION OF SPRINKLER ASSEMBLY, RELATED PIPES, AND COMPACTED EARTH DIKE ARE APPROXIMATE AND ARE OBTAINED FROM "SPRINKLER DISTRIBUTION SYSTEM PLAN" BY KENNEDY ENGINEERS, INC. PROVIDED BY THE CITY.
 2. LOCATE AND PROTECT EXISTING UNDERGROUND UTILITIES PRIOR TO EXCAVATION.



PLAN
SCALE: 1"=60'

NOT FOR CONSTRUCTION

NO.	REVISIONS DESCRIPTIONS	BY	DATE

CITY OF CALISTOGA
1232 WASHINGTON ST
CALISTOGA, CALIFORNIA 94515

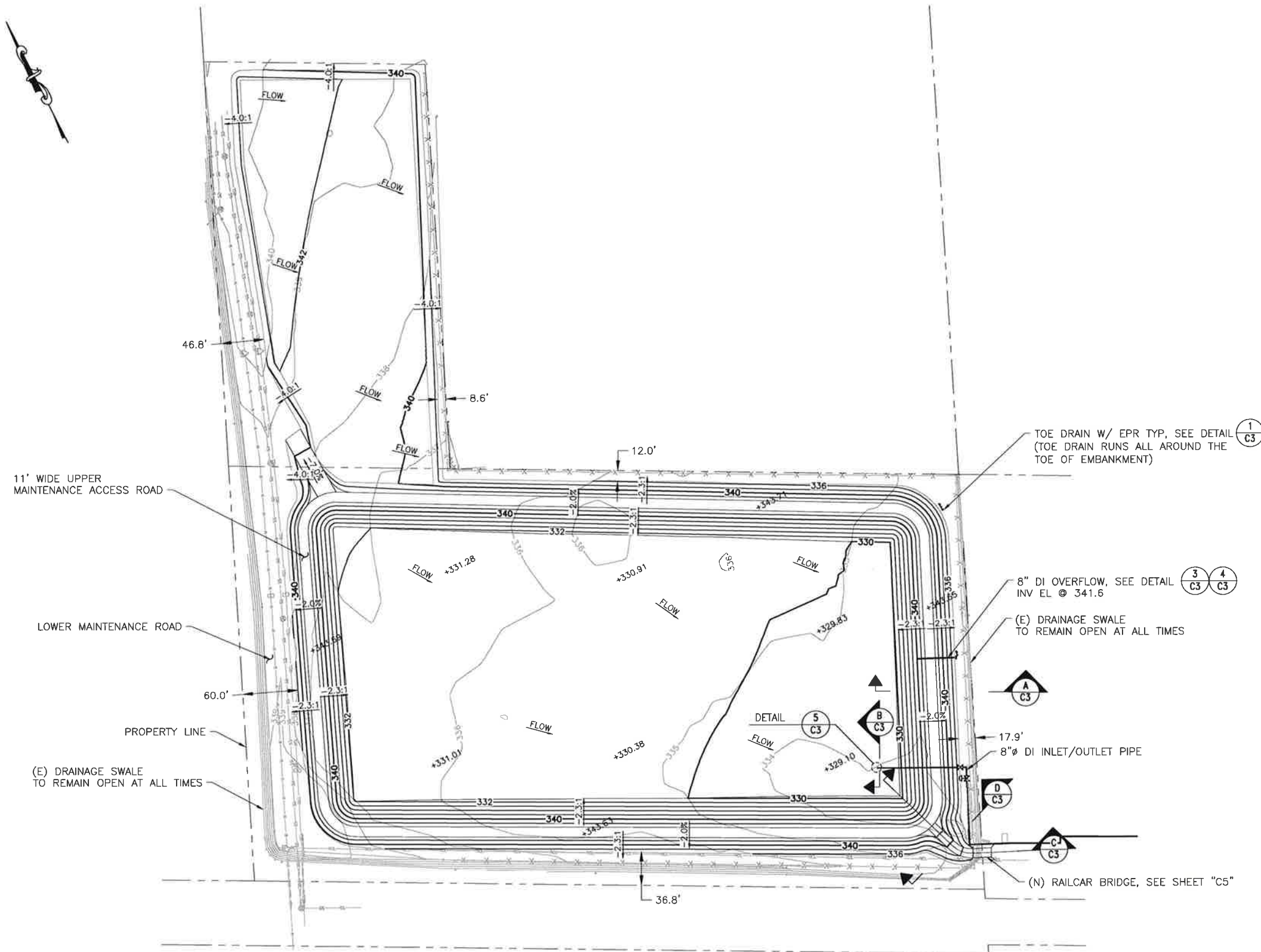


DRAWN BY: C SOMERA
DESIGNED BY: M PATEL
CHECKED BY: C SMITH
APPROVED BY: C SMITH



EFFLUENT STORAGE POND
CITY OF CALISTOGA
SITE PLAN AND EXISTING CONDITIONS

URS JOB NO. 26818894
DATE SEPTEMBER 5, 2014
SCALE AS SHOWN
SHEET ____ OF ____ SHEETS
SHEET NO. C1



11' WIDE UPPER MAINTENANCE ACCESS ROAD

LOWER MAINTENANCE ROAD

PROPERTY LINE

(E) DRAINAGE SWALE TO REMAIN OPEN AT ALL TIMES

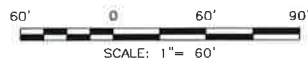
TOE DRAIN W/ EPR TYP, SEE DETAIL 1/C3
(TOE DRAIN RUNS ALL AROUND THE TOE OF EMBANKMENT)

8" DI OVERFLOW, SEE DETAIL 3/C3 4/C3
INV EL @ 341.6

(E) DRAINAGE SWALE TO REMAIN OPEN AT ALL TIMES

17.9' 8" DI INLET/OUTLET PIPE

(N) RAILCAR BRIDGE, SEE SHEET "C5"



PLAN
SCALE: 1"=40'

NOT FOR CONSTRUCTION

NO.	REVISIONS DESCRIPTIONS	BY	DATE

CITY OF CALISTOGA
1232 WASHINGTON ST
CALISTOGA, CALIFORNIA 94515



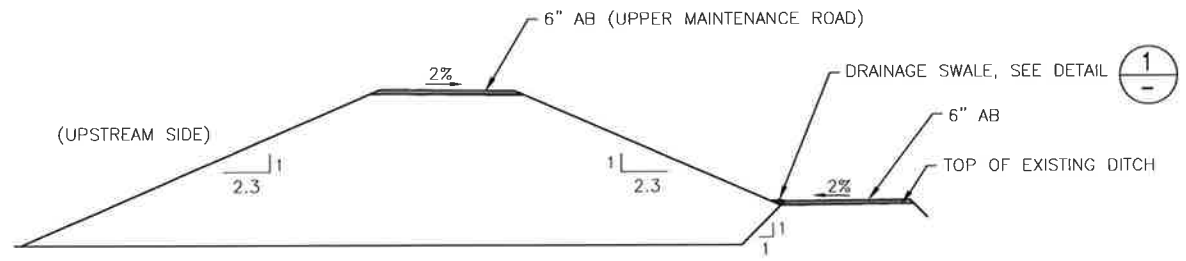
DRAWN BY: C SOMERA
DESIGNED BY: M PATEL
CHECKED BY: C SMITH
APPROVED BY: C SMITH

URS
1333 Broadway, Ste. 800
Oakland, Ca 94612
Tel: 510-893-3600

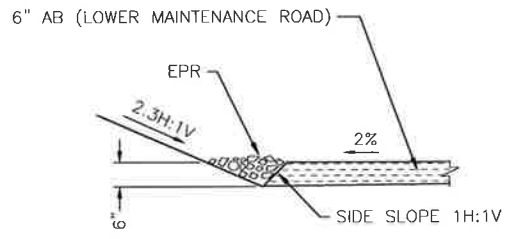
EFFLUENT STORAGE POND
CITY OF CALISTOGA

GRADING PLAN

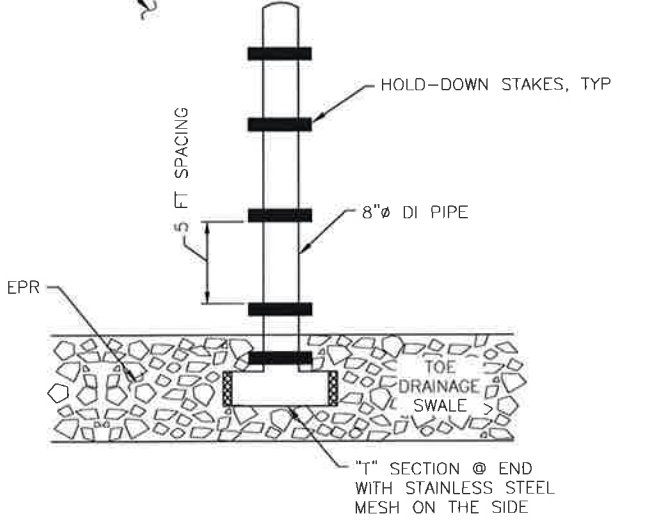
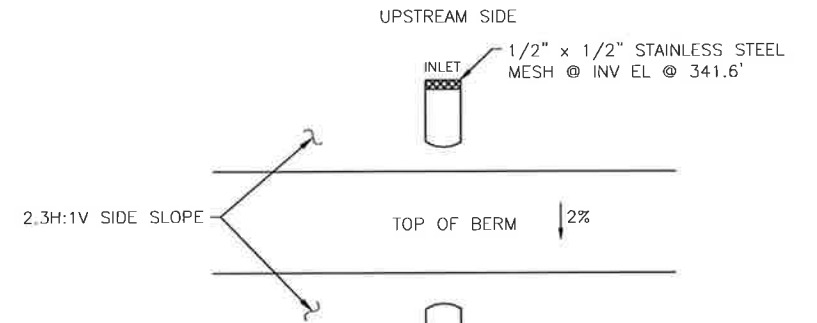
URS JOB NO. 26818894
DATE SEPTEMBER 5, 2014
SCALE AS SHOWN
SHEET ___ OF ___ SHEETS
SHEET NO.
C2



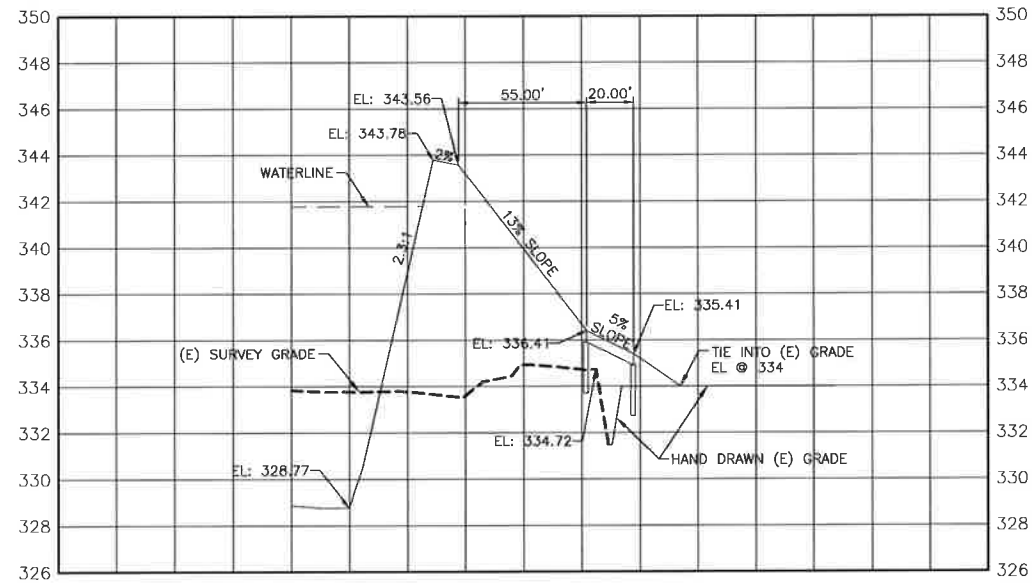
TYPICAL EMBANKMENT SECTION **A**
NTS



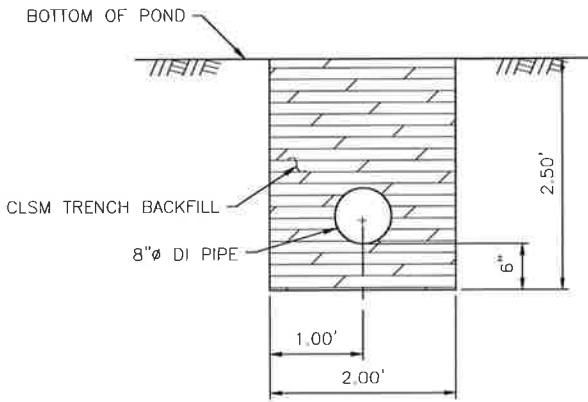
DRAINAGE SWALE DETAIL **1**
NTS



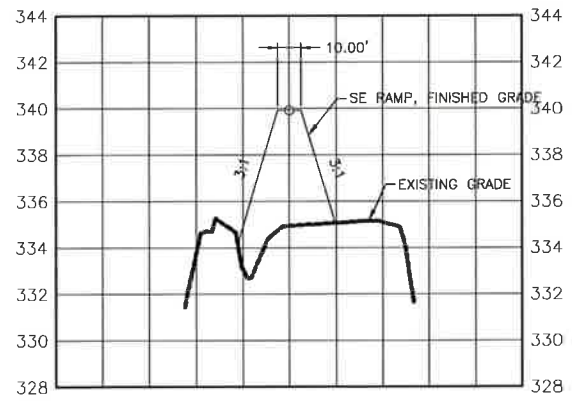
PLAN DETAIL **3**
NTS



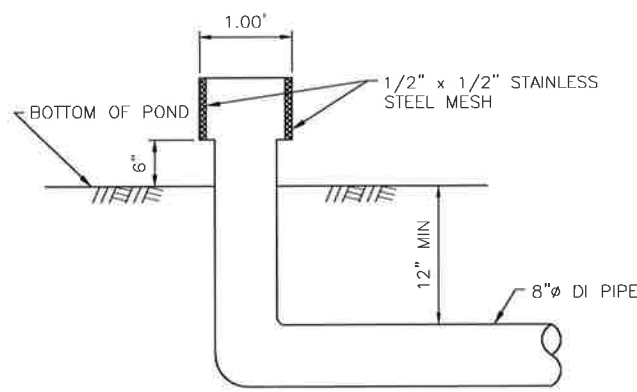
TYPICAL SECTION **C**
SCALE: 1"=40'



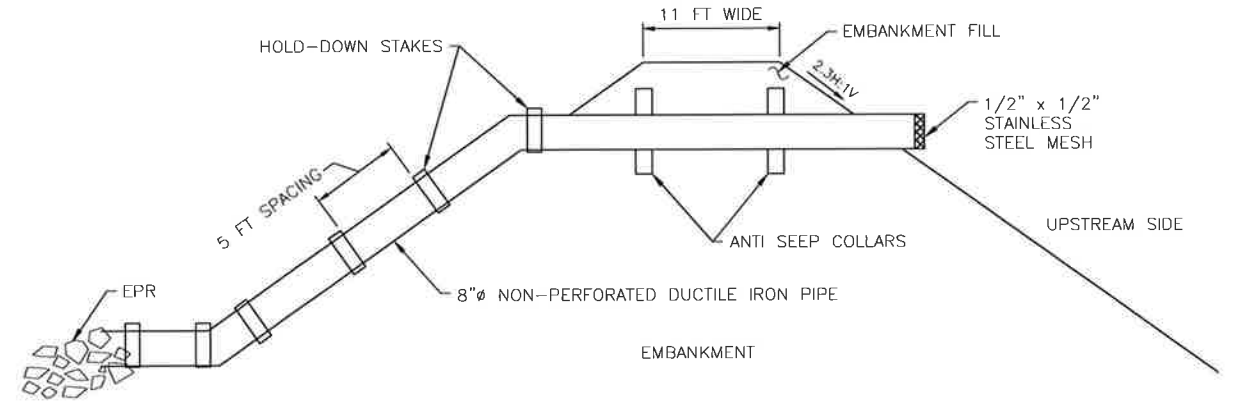
INLET/OUTLET PIPE SECTION **B**
NTS



TYPICAL SECTION **D**
SCALE: 1"=40'



INLET/OUTLET PIPE DETAIL **5**
NTS



DETAIL **4**
NTS

NOT FOR CONSTRUCTION

Sep 09, 2014 - 1:01pm E:\Work\Kimbell_Reservoir_300_Recycled Water Pond\B Design Services\Sheet\C3.dwg

NO.	REVISIONS DESCRIPTIONS	BY	DATE

CITY OF CALISTOGA
1232 WASHINGTON ST
CALISTOGA, CALIFORNIA 94515



DRAWN BY: L TAM
DESIGNED BY: L TAM
CHECKED BY: C SMITH
APPROVED BY: C SMITH



EFFLUENT STORAGE POND
CITY OF CALISTOGA

EMBANKMENT DETAILS

URS JOB NO. 26818894
DATE SEPTEMBER 5, 2014
SCALE AS SHOWN
SHEET OF SHEETS
SHEET NO. C3

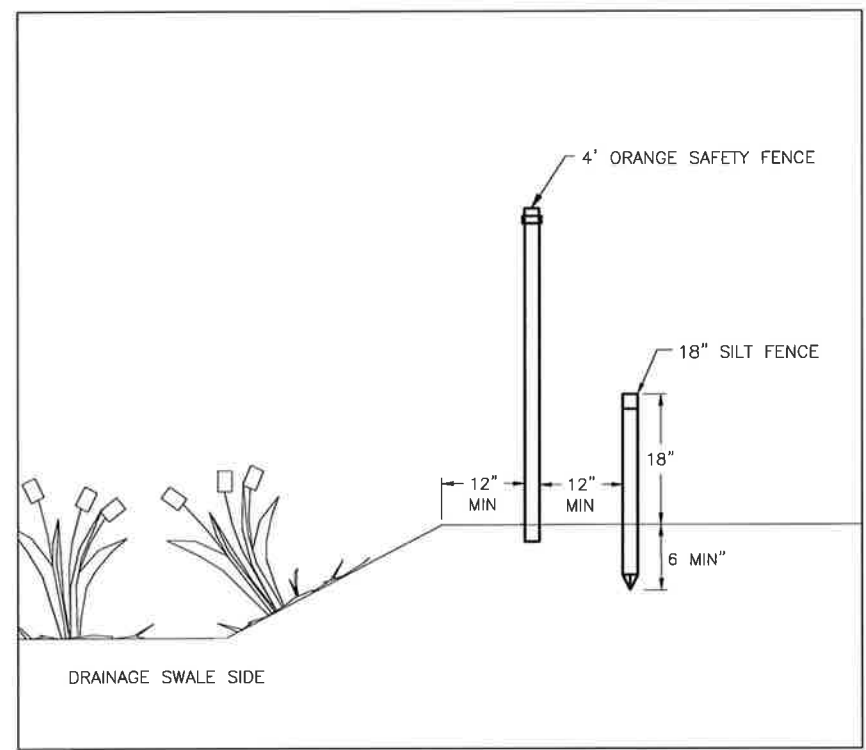


LEGEND:

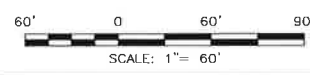
- ENVIRONMENTAL EXCLUSION FENCE
- CONSTRUCTION AREA FENCE

NOTE:

1. INSTALL ORANGE SAFETY FENCE AT 1 FOOT OFFSET FROM (E) DRAINAGE SWALE.
2. INSTALL SILT FENCE AT 1 FOOT OFFSET FROM ORANGE SAFETY FENCE. KEY IN MIN 6 INCHES.



FENCING, SECTION DETAIL
NTS



PLAN
SCALE: 1"=60'

NOT FOR CONSTRUCTION

NO.	REVISIONS DESCRIPTIONS	BY	DATE

CITY OF CALISTOGA
1232 WASHINGTON ST
CALISTOGA, CALIFORNIA 94515



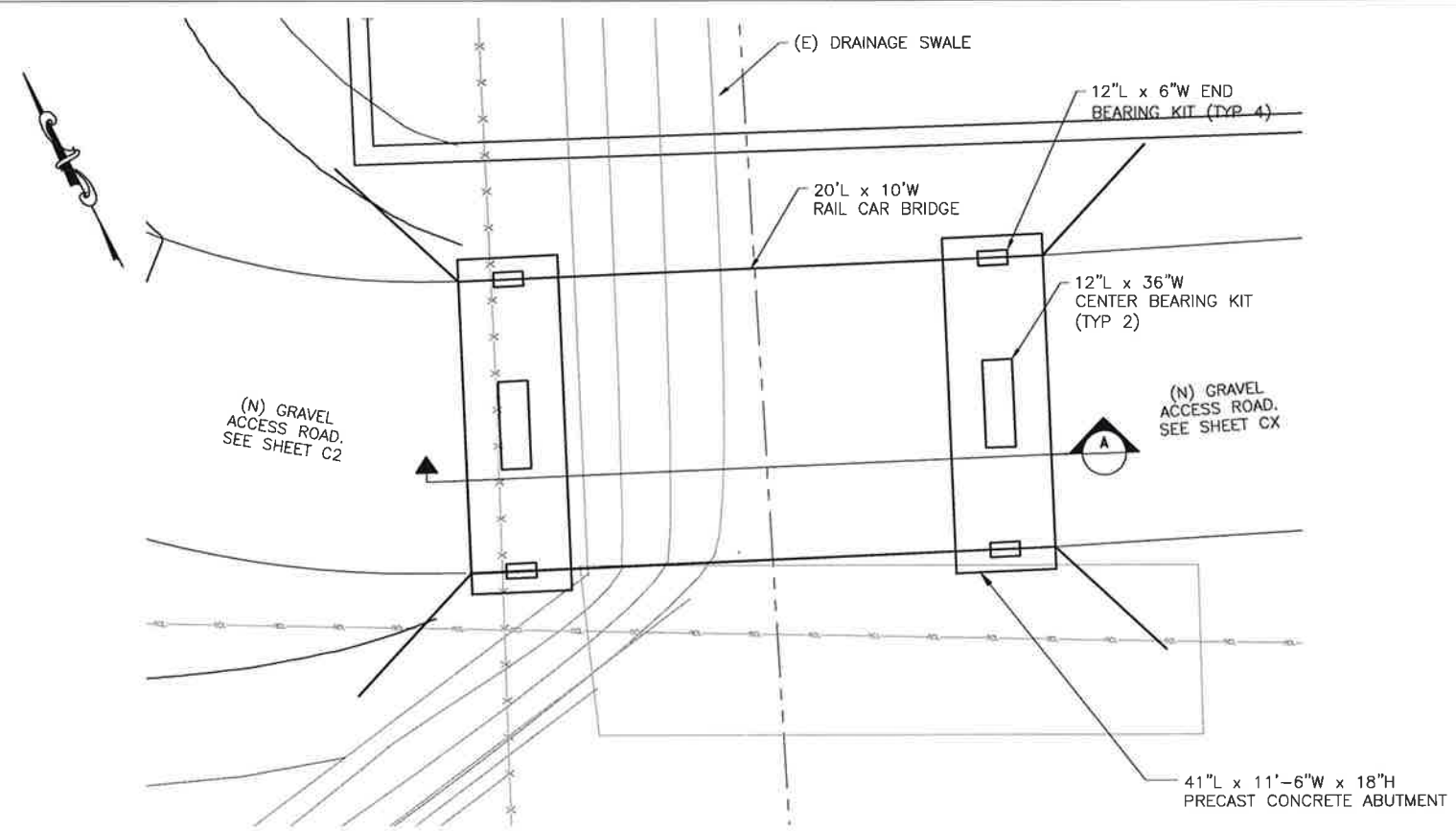
DRAWN BY: C SOMERA
DESIGNED BY: L TAM
CHECKED BY: C SMITH
APPROVED BY: C SMITH



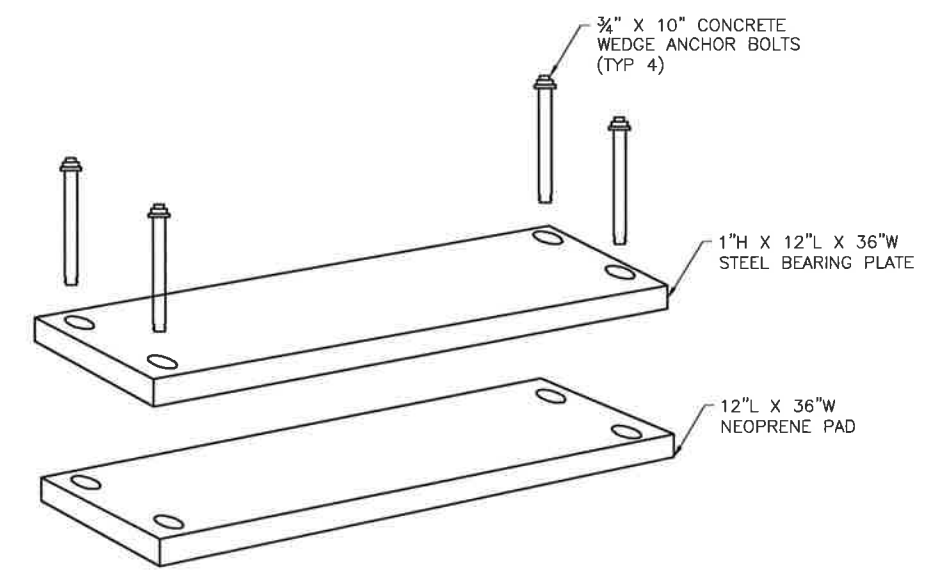
EFFLUENT STORAGE POND
CITY OF CALISTOGA

ENVIRONMENTAL MITIGATION

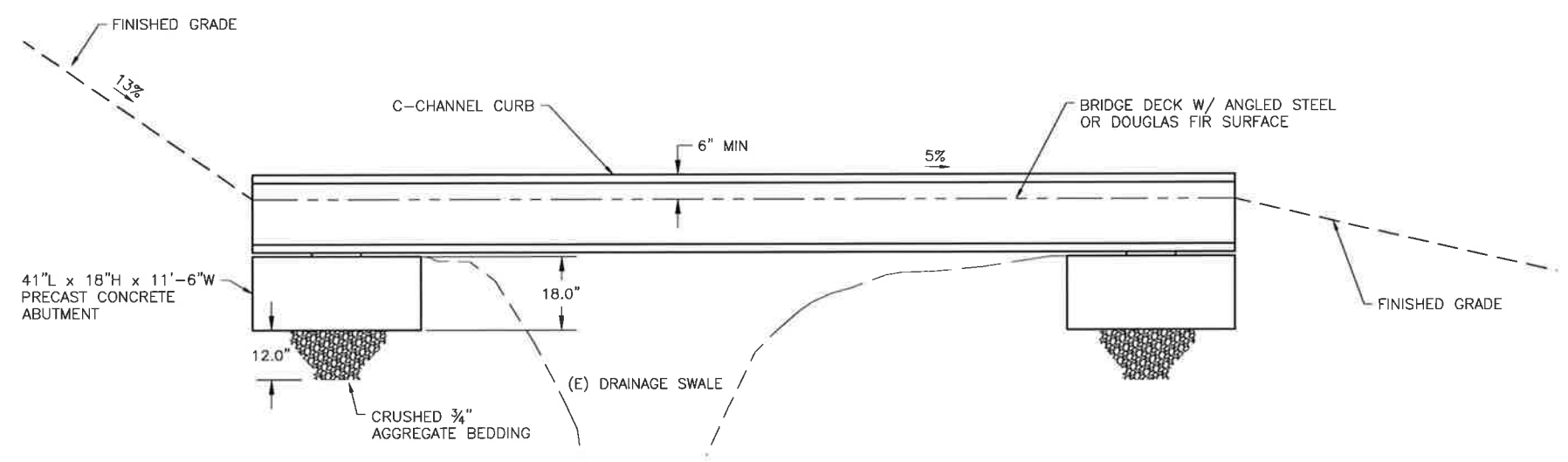
URS JOB NO. 26818894
DATE SEPTEMBER 5, 2014
SCALE AS SHOWN
SHEET ____ OF ____ SHEETS
SHEET NO. C4



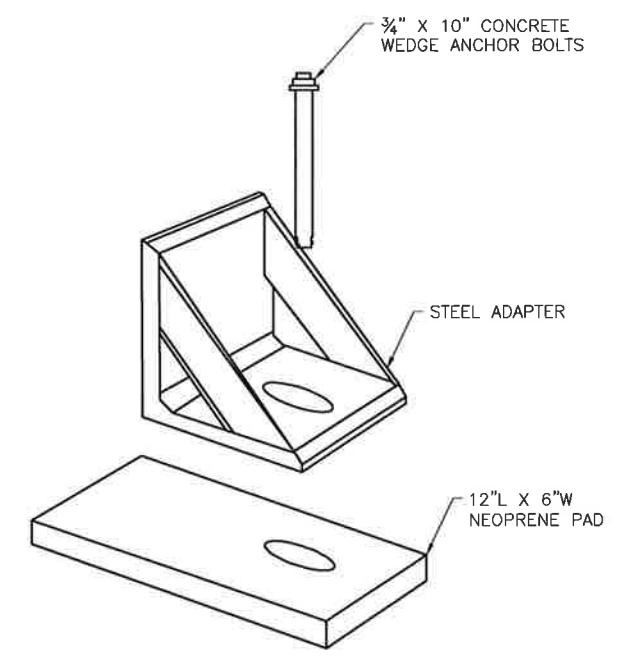
RAIL CAR BRIDGE PLAN VIEW
NTS



DETAIL - CENTER BEARING KIT
NTS



RAIL CAR BRIDGE SECTION VIEW A
NTS



DETAIL - END BEARING KIT
NTS

NOT FOR CONSTRUCTION

Sep 05, 2014 - 1:01pm E:\Work\Visual_Reviews\300_Recycled Water_Pond\B.D. Design_Services\Sheets\C5.dwg
 chrisina_somera

NO.	REVISIONS DESCRIPTIONS	BY	DATE

CITY OF CALISTOGA
 1232 WASHINGTON ST
 CALISTOGA, CALIFORNIA 94515



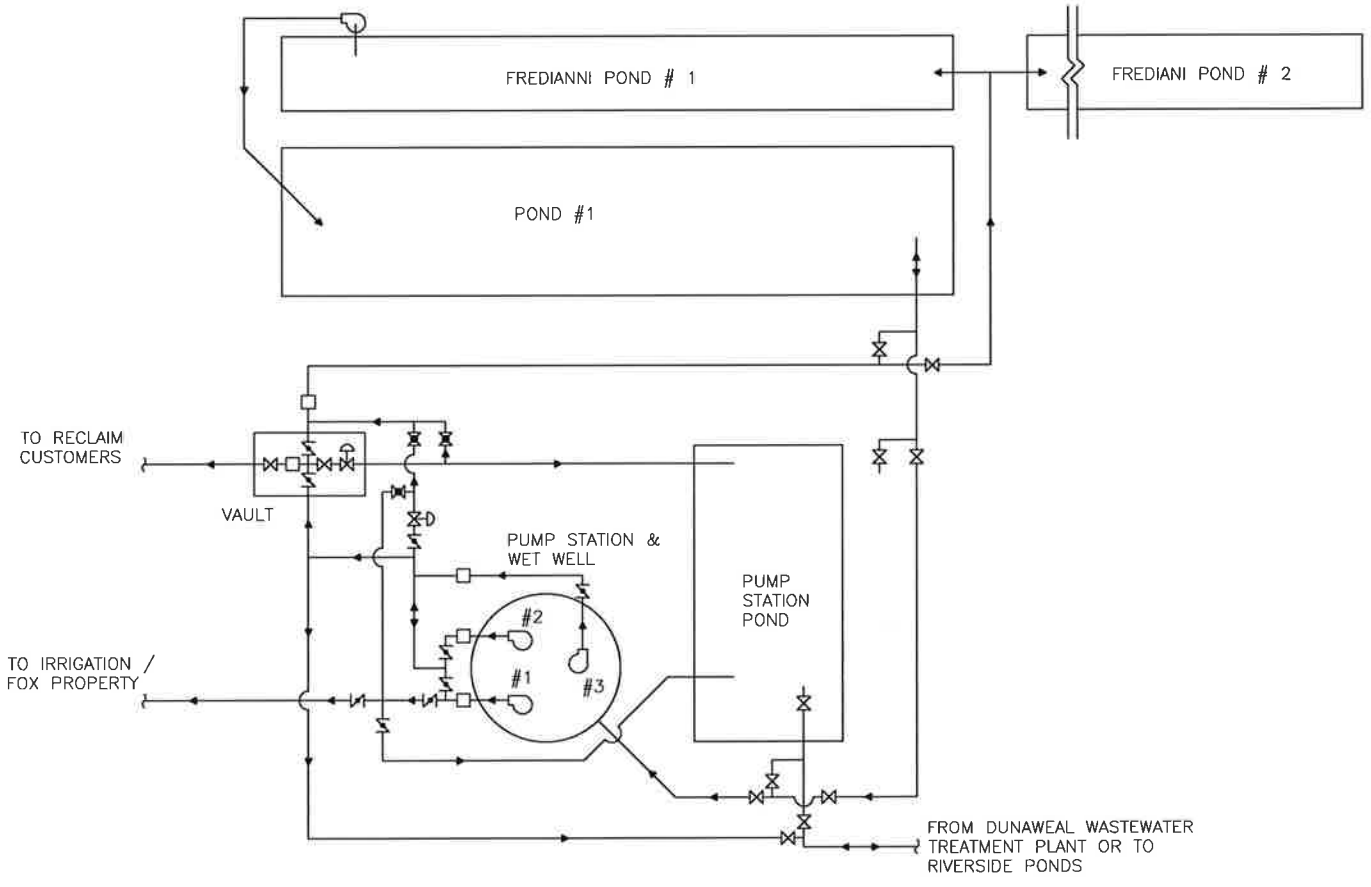
DRAWN BY: L TAM
 DESIGNED BY: L TAM
 CHECKED BY: C SMITH
 APPROVED BY: C SMITH



EFFLUENT STORAGE POND
 CITY OF CALISTOGA

RAIL CAR BRIDGE DETAIL

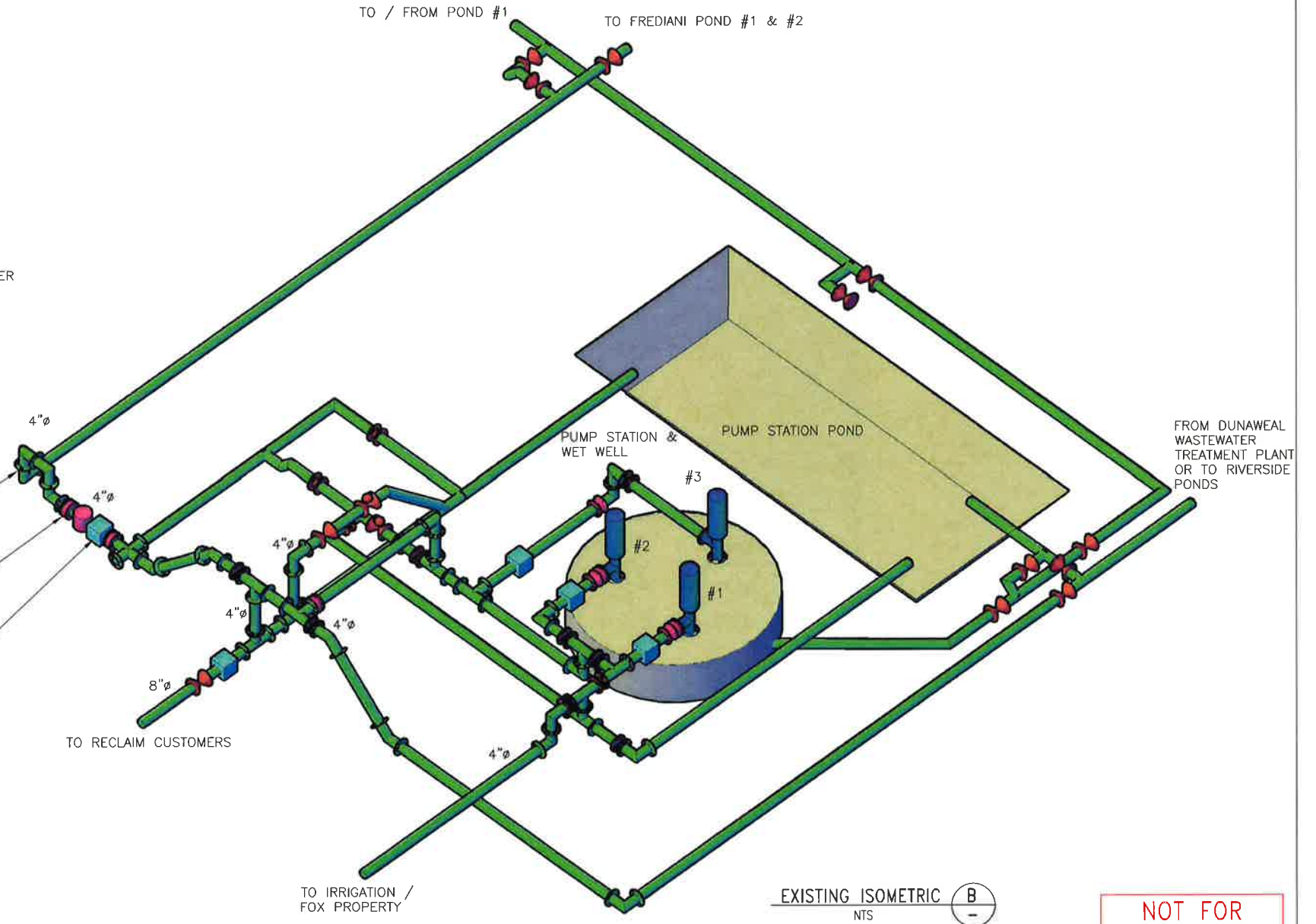
URS JOB NO. 26818894
 DATE SEPTEMBER 5, 2014
 SCALE AS SHOWN
 SHEET ___ OF ___ SHEETS
 SHEET NO. C5



EXISTING SCHEMATIC (A)
NTS



POINT OF CONNECTION
FLEXIBLE COUPLING
METER IN VALVE BOX



EXISTING ISOMETRIC (B)
NTS

- LEGEND:**
- ⊗ GATE VALVE
 - ⊗ BALL VALVE
 - ⊗ ALTITUDE VALVE
 - ⊗ BUTTERFLY VALVE
 - FLOWMETER
 - ⊗ PUMP
 - ⊗ EXISTING
 - (E) NEW
 - (N) FURNISH AND INSTALL
 - F/I NEW WORK
 - ⊗ REDUCER

NOTE:

1. CONTRACTOR SHALL FIELD-VERIFY ALL EXISTING CONDITIONS, INCLUDING ALL EXISTING AND NEW DIMENSIONS PRIOR TO THE START OF WORK.

NOT FOR CONSTRUCTION

Sep 09, 2014 - 11:02am E:\Work\Kimbol_Resources\300_Recycled Water Pond\6.0_Design_Services\Sheets\M1.dwg
 chrisina_somers

NO.	REVISIONS DESCRIPTIONS	BY	DATE

CITY OF CALISTOGA
1232 WASHINGTON ST
CALISTOGA, CALIFORNIA 94515

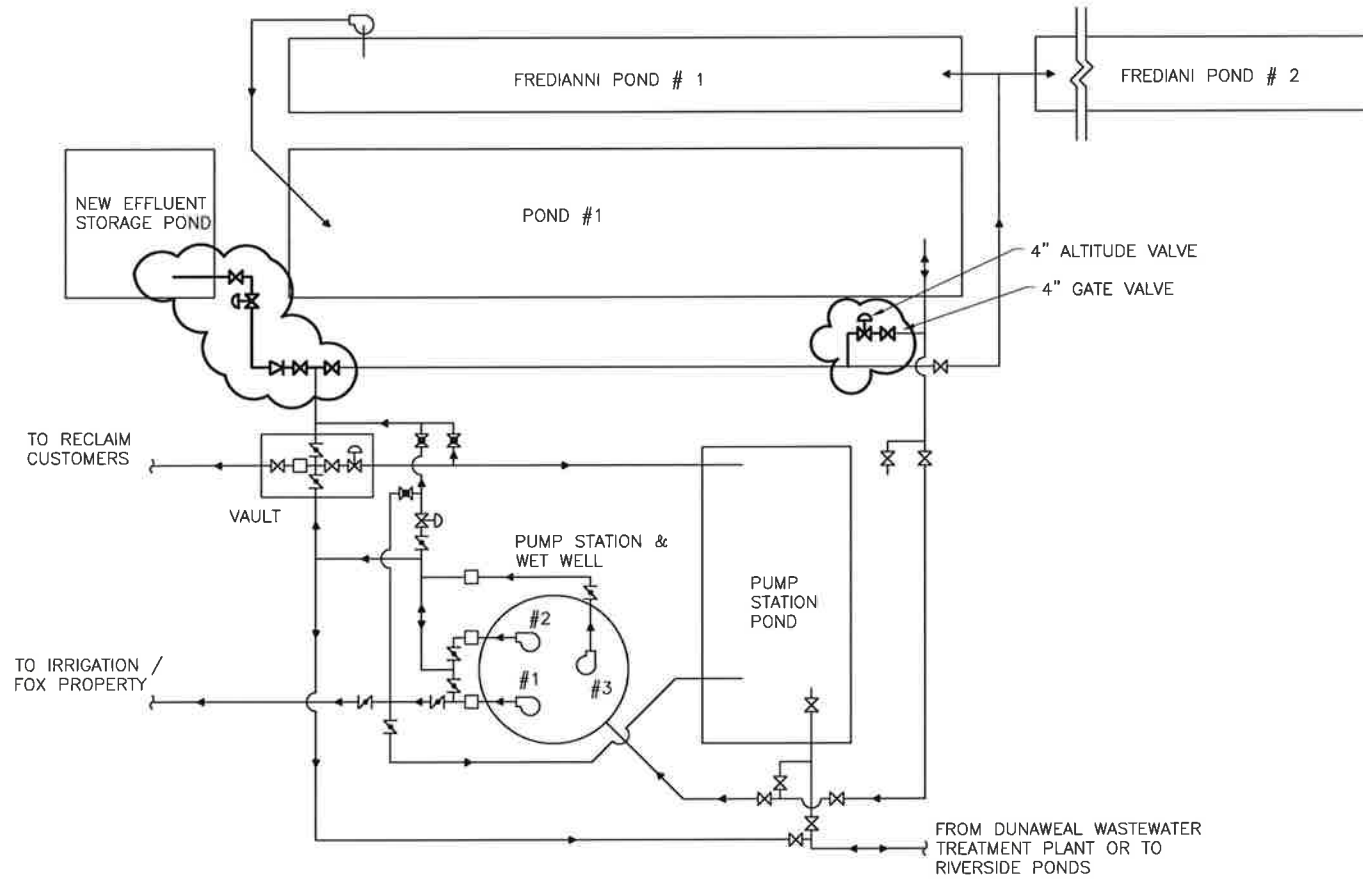


DRAWN BY: L KWAN
DESIGNED BY: L KWAN
CHECKED BY: C SMITH
APPROVED BY: C SMITH

URS
1333 Broadway, Ste. 800
Oakland, Ca 94612
Tel: 510-893-3600

EFFLUENT STORAGE POND
CITY OF CALISTOGA
EXISTING PIPELINE,
FITTINGS & APPURTENANCES

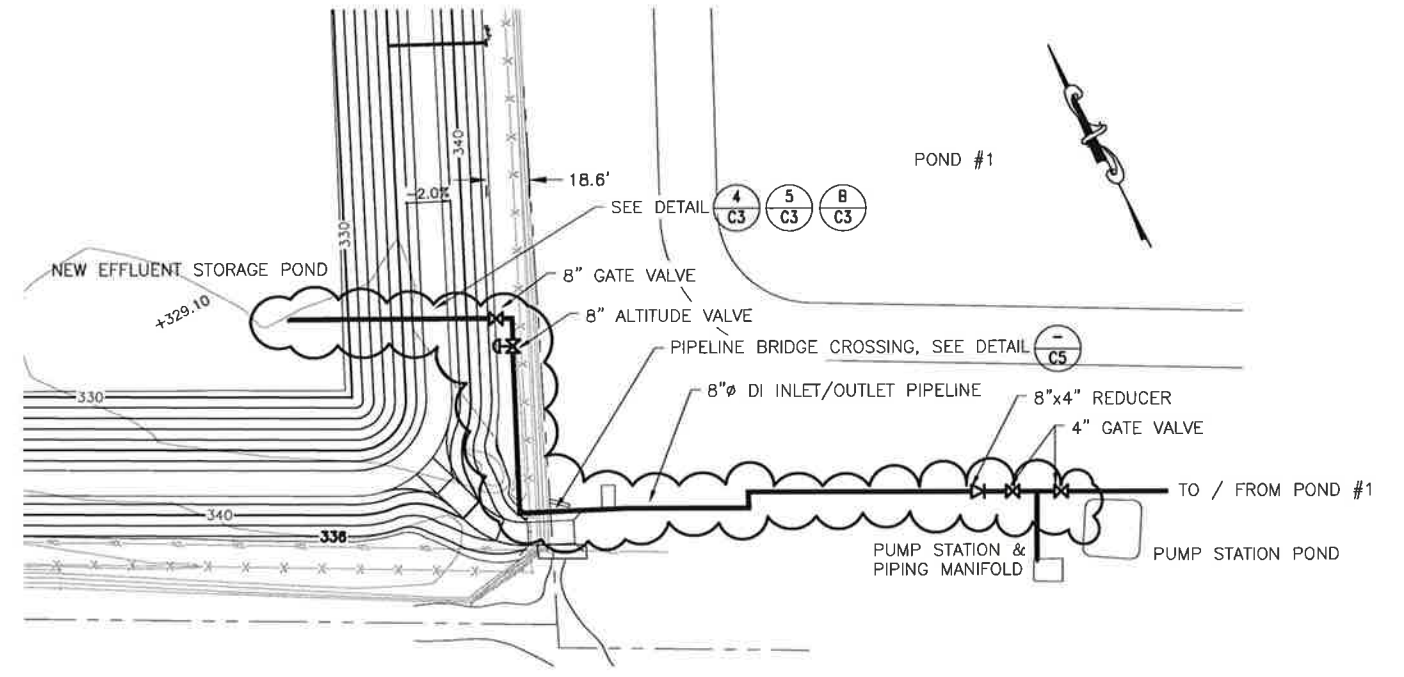
URS JOB NO. 26818894
DATE SEPTEMBER 5, 2014
SCALE AS SHOWN
SHEET ___ OF ___ SHEETS
SHEET NO. M1



NEW SCHEMATIC
NTS

NOTE:

1. CONTRACTOR MAY NOT RE-USE SALVED MATERIAL WITHOUT REVIEW BY THE CITY AND AS INDICATED ON THE SUBMITTALS PER SPECIFICATIONS.
2. THE LOCATIONS AND ELEVATIONS OF THE POINTS OF CONNECTION ARE APPROXIMATE AND WILL REQUIRED FIELD VERIFICATION BY THE CONTRACTOR.
3. PROVIDE CEMENT MORTAR LINED DUCTILE IRON PIPELINE AND FITTINGS CONFORMING TO AWWA 150 AND AWWA 151. THE MINIMUM PRESSURE CLASS SHALL BE CLASS 150.
4. BURIED PIPELINE AND FITTINGS SHALL BE POLYETHYLENE ENCASED. CONNECTIONS SHALL BE RESTRAINED MECHANICAL JOINT TYPE.
5. EXPOSE PIPELINE AND FITTINGS SHALL BE EPOXY COATED. CONNECTION SHALL BE FLANGED TYPE.
6. ALL NUTS, BOLTS, WASHERS, AND FASTENERS SHALL BE ZINC COATED STEEL GRADE 5 OR BETTER.
7. SUBMIT WORK PLANS FOR HYDROSTATIC PRESSURE TESTS. THE CONTRACTOR IS RESPONSIBLE FOR QUANTITY TAKEOFFS ASSOCIATED WITH HYDROSTATIC TESTING.
8. BURIED VALVES SHALL BE HOUSED IN VALVE BOX.
9. THE ALTITUDE VALVE RESERVOIR PRESSURE SENSING LINE SHOULD BE 3/4"Ø MINIMUM INTERNAL DIAMETER AND INSTALLED WITH A 2' UPWARD SLOPE. MATERIALS SHALL BE COPPER OR PVC SCHEDULE 80.
10. CONTRACTOR TO FURNISH AND INSTALL ALL PIPING, FITTING, VALVING, AND INCIDENTALS FOR THE SUCCESSFUL COMPLETION OF WORK.



PLAN
SCALE: 1"=40'

NOT FOR CONSTRUCTION

Sep 09, 2014 - 1:02pm E:\Work\Kresal_Plan\res\100_Registered Water Pond\6.0_Design_Services\Sheets\M2.dwg
 chrilling_somers

NO.	REVISIONS DESCRIPTIONS	BY	DATE

CITY OF CALISTOGA
1232 WASHINGTON ST
CALISTOGA, CALIFORNIA 94515



DRAWN BY: L KWAN
DESIGNED BY: L KWAN
CHECKED BY: C SMITH
APPROVED BY: C SMITH



EFFLUENT STORAGE POND
CITY OF CALISTOGA

NEW PIPELINE,
FITTINGS & APPURTENANCES

URS JOB NO. 2681894
DATE SEPTEMBER 5, 2014
SCALE AS SHOWN
SHEET ____ OF ____ SHEETS
SHEET NO.
M2