

PACIFIC TREE CARE

*Joseph A. Schneider Certified Arborist WAE-0156A
Jacob J. Schneider Certified Arborist WAE-5478A*

June 17, 2014

RECEIVED
NOV 06 2014
CITY OF CALISTOGA

Steve Klein
Hogan Land Services
1702 4th Street
Santa Rosa, CA 95404

Re: Arborist report 2960 Foothill Boulevard (Amended on October 15, 2014, see comments in the shaded section)

Introduction

I was asked by Ken Carr of Hogan Land Services to make a site visit to 2960 Foothill Boulevard to inventory and assess the condition of the trees located on-site. I was also given a site plan regarding APN:011-400-003, Quita Development. The site plan showed the locations of most all the trees inventoried.

Discussion

All together 42 trees were identified as protected by the City of Calistoga Tree Ordinance 19.01. The trees were numerically inventoried and tagged. 1^{3/8}" round aluminum numbered tags were attached to the mainstem of each tree. The tags were secured using an aluminum nail on the north side of the mainstem at approximately 48" above grade.

An additional 22 trees or clumps of trees were added as per the request of Eric Lundquist with the City of Calistoga planning department.

The condition of the inventoried trees was interpreted; comments were then placed onto three pages titled 'Tree Survey'. Other comments were also entered into the category 'Notes'. While

most of the trees inventoried were native and indigenous to the site, a few exotic species were also inventoried.

The site plan that was provided showed intended development for the placement of a single family dwelling, a proposed driveway, and a septic area on the northeastern lot.

Conclusion

The most unique of the exotic trees are the five Cork Oaks (*Quercus suber*) growing close to the parking lot of the veterinary clinic. The other unusual trees are the Silver Poplars (*Populus alba*) at the northeastern portion of the property.

Most of the trees were structurally sound with a few exceptions. In some cases bark inclusion was identified. Included bark weakens crotches and limb attachments. Symptoms of infections from soil-borne pathogens were not observed on this site. It does not appear, from the site map provided, that any of the inventoried trees will be disturbed during the development of the northeastern lot.

Respectfully submitted,

Joseph A. Schneider
ASCA Member
Certified Arborist WE-0156A

RECEIVED
NOV 06 2014
CITY OF CALISTOGA

Tree #	Common Name	Genus species	DBH	Notes
1	Silver Poplar	<i>Populus alba</i>	6"	
2	Black Walnut	<i>Juglans nigra</i>		Has a nest. Four uprights beginning 4.5 feet above grade.
3	Valley Oak	<i>Quercus lobata</i>		Upright in good condition
4	Black Walnut	<i>Juglans nigra</i>		Two uprights 7-feet above grade. Good condition
5	Silver Poplar	<i>Populus alba</i>		Leaning into #4. Good condition.
6	Silver Poplar			Upright, fair condition
7	Valley Oak	<i>Quercus lobata</i>	3" avg.	A group of 11 small Oak, average of 3" diameter. Located in the north corner,
8	Valley Oak		10"	Located 8-feet from driveway, under high voltage wires. Good condition.
9	Valley Oak		6"	Red dot at base. Under high voltage wire
10	Black Walnut	<i>Juglans nigra</i>		Two stems, moderate condition.
11	Coast Live Oak	<i>Quercus agrifolia</i>	8"	
12	Coast Live Oak		6"	Good condition
13	Valley Oak	<i>Quercus lobata</i>		Good condition, under high voltage.
14	Valley Oak		12" + 14"	
15	Valley Oak		10"	
16	Valley Oak		8"	

17	Valley Oak		5"	
18	Valley Oak	<i>Quercus lobata</i>		Two stems. Has a bad crotch
19	Valley Oak		12"	
20	Coast Live Oak	<i>Quercus agrifolia</i>	6"	
21	Valley Oak		6"	
22	Valley Oak	<i>Quercus lobata</i>	14"	A small adjacent 2" diameter Oak
23	Valley Oak			A group of 3 with an average of 3" diameter
24	Valley Oak		12" + 10"	Two located at fence
25	Coast Live Oak	<i>Quercus agrifolia</i>	18"	Nice
26	Valley Oak	<i>Quercus lobata</i>	16"	Nice
27	Coast Live Oak	<i>Quercus agrifolia</i>	6"	Cement rubble at the base. Multiple stems, poor form.
28	Coast Live Oak		8"	Poor form. Bark inclusion
29	Valley Oak	<i>Quercus lobata</i>	12"	Inclusive of a 6" diam. Coast Live Oak just to the west. Good crotch, upright.
30	Coast Live Oak	<i>Quercus agrifolia</i>	10"	Upright, good condition. Retains a grapevine in the canopy.
31	Coast Live Oak			
32	Valley Oak	<i>Quercus lobata</i>		
	Valley Oak		16"	

33	Coast Live Oak	<i>Quercus agrifolia</i>	6"	Two stems
34	Valley Oak	<i>Quercus lobata</i>	18"	Upright, fence wound. Inclusive of a 6" diameter Valley Oak 3-feet to the west.
35	Coast Live Oak	<i>Quercus agrifolia</i>		Multiple stems, last one at the fence. Retains a grapevine in the canopy.
36	Cork Oak	<i>Quercus suber</i>	6"	Group of three
37	Valley Oak	<i>Quercus lobata</i>	16"	Inclusive of three small groups.
38	Valley Oak		8"	Double stem. Bad crotch. Under high voltage.
39	Cork Oak	<i>Quercus suber</i>		Two Oak located in the parking strip.
40	Coast Live Oak	<i>Quercus agrifolia</i>		Group of two, northernmost is weak.
41	Coast Live Oak			Little guy at parking area
42	Valley Oak	<i>Quercus lobata</i>	10"	Two stem in the fenced area. Bad crotch.
43	Valley Oak		3"	Small Oak located between trees #21 and 22
44	Red Maple	<i>Acer Rubrum</i>		Tree has girdling roots but is in excellent condition
45	Purple Leaf Plum	<i>Prunus cerasifera</i> 'atropurpurea'		Three trees located at the clinic entrance. All are in good condition
46	Valley Oak	<i>Quercus lobata</i>	12"	Double stem. Located under the wires
47	Valley Oak		6"	Good condition
48	Valley Oak		8"	Retains a Rose in the canopy. Located under wires
49	Coast Live Oak	<i>Quercus agrifolia</i>	7" + 8"	Two located directly next to each other. In good condition

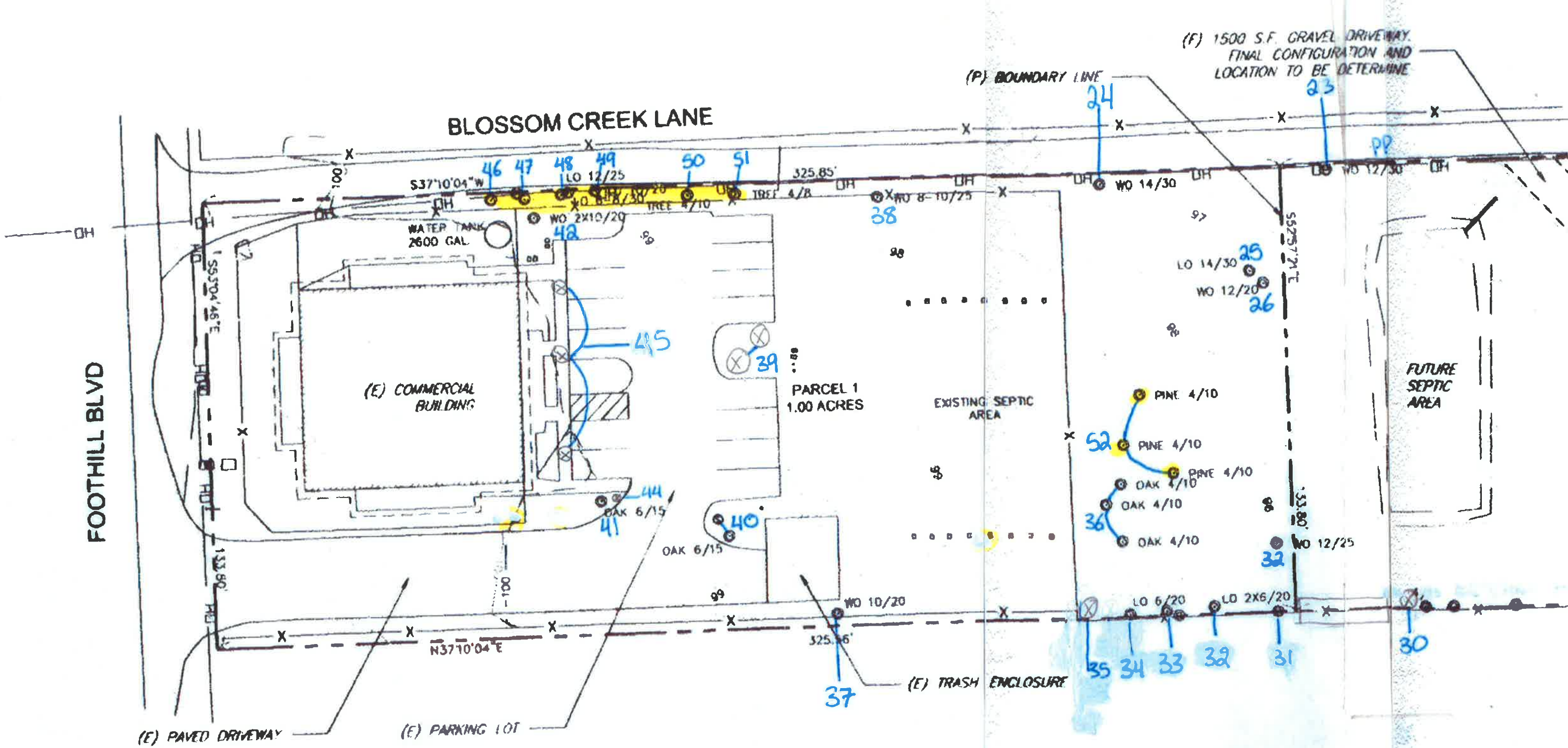
50	Coast Live Oak	<i>Quercus agrifolia</i>	12"	
51	Coast Live Oak			Good condition
52	Aleppo Pine	<i>Pinus halepensis</i>	6"	A group of three trees. Infested with sequoia pitch moth
53	Black Walnut	<i>Juglans nigra</i>		16 stems growing on a decayed stump. Unsound
54	Black Walnut			5 stems located on a decayed stump. Unsound
55	Persian Walnut	<i>Juglans regia</i>		6 stems on a decayed stump. Unsound
56	Black Walnut	<i>Juglans nigra</i>		11 stems on a decayed stump. Unsound
57	Black Walnut			6 stems on a decayed stump. Unsound
58	Persian Walnut	<i>Juglans regia</i>		6 stems on a decayed stump. Unsound
59	Black Walnut	<i>Juglans nigra</i>		2 stems.
60	Black Walnut			7 stems.
61	Oak	<i>Quercus sp.</i>	5"	A cluster at the fence
62	Black Walnut	<i>Juglans nigra</i>	10"	
63	Black Walnut			
64	Valley Oak	<i>Quercus lobata</i>	50"	Located across the driveway
65			12"	Located across the driveway

FOOTHILL BLVD

BLOSSOM CREEK LANE

(F) 1500 S.F. GRAVEL DRIVEWAY.
FINAL CONFIGURATION AND
LOCATION TO BE DETERMINE

(P) BOUNDARY LINE

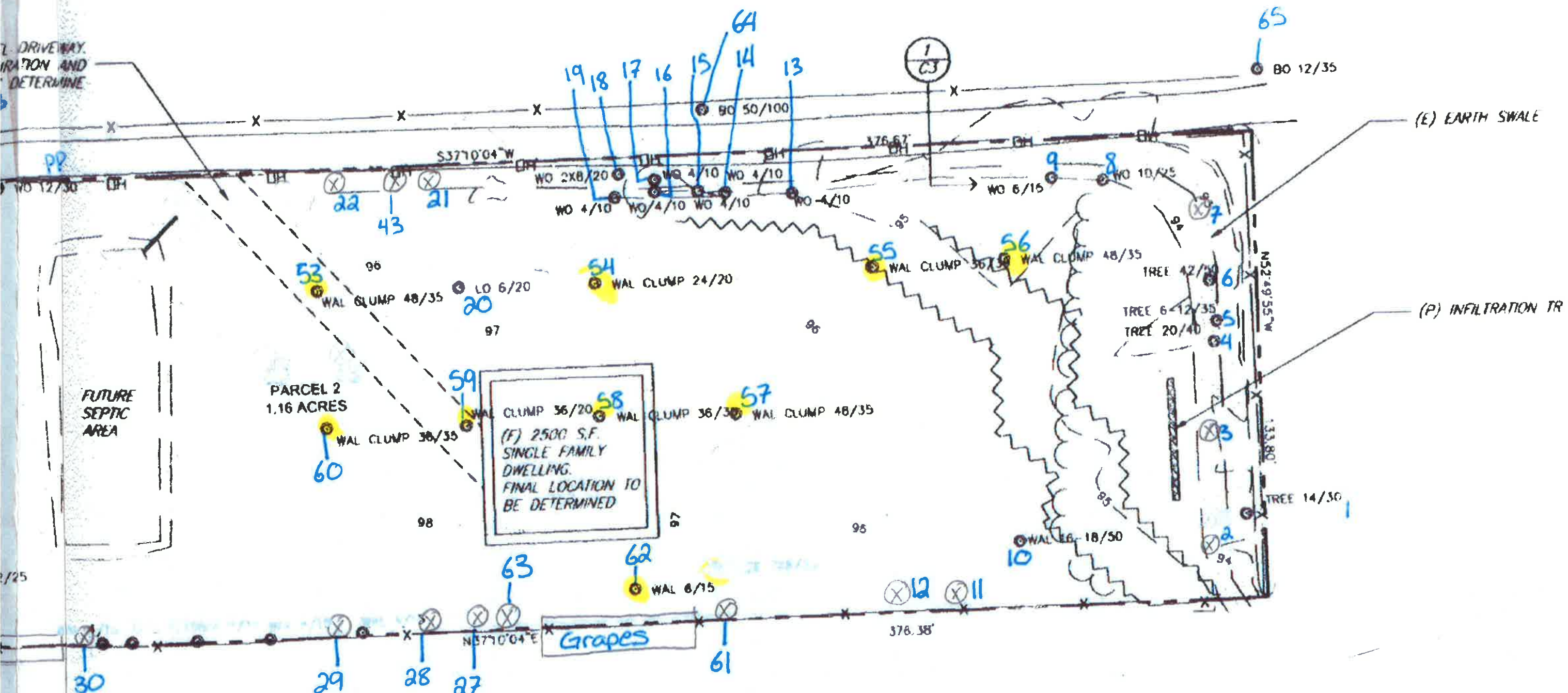


RECEIVED

NOV 06 2014

CITY OF CALISTOGA

7. DRIVEWAY
LOCATION AND
DETERMINE



NOTE: THIS EXHIBIT DOES NOT REPRESENT A (COMPLETE) TOPOGRAPHIC SURVEY OR BOUNDARY DETERMINATION. BOUNDARY SHOWN IS PER ASSESSOR RECORDS ONLY AND HAS NOT BEEN SURVEYED OR CONFIRMED.

REVISION BLOCK

1	
2	
3	

RECEIVED
 NOV 06 2014
 CITY OF CALISTOGA