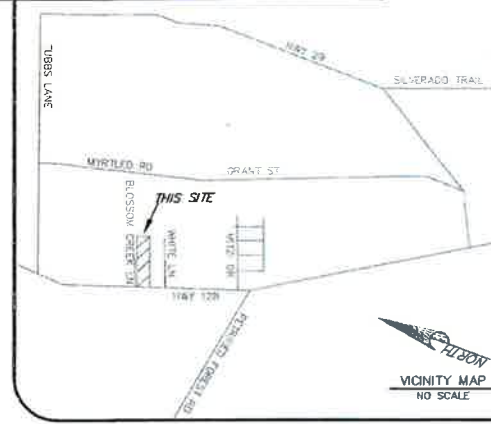


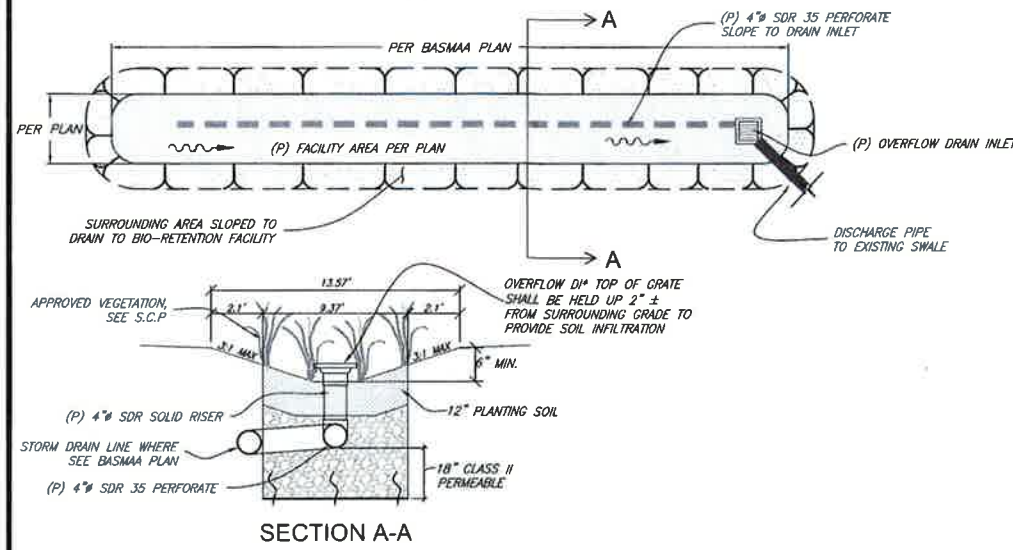
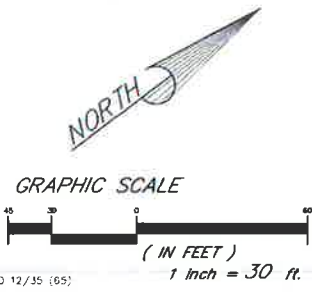
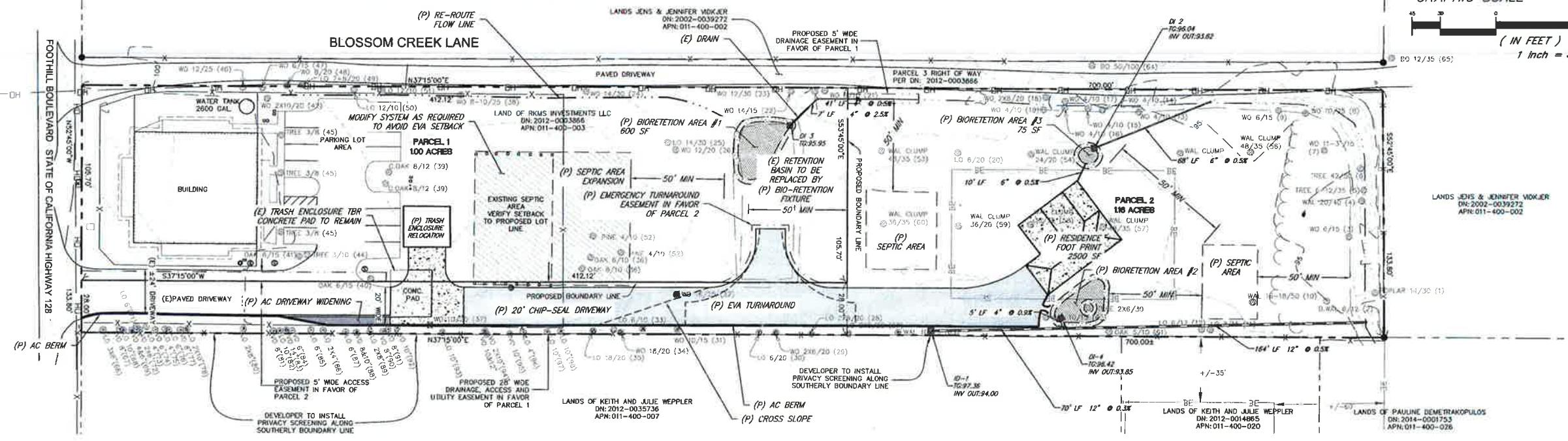
RECEIVED
OCT 08 2015
BY: _____

ARBORIST TREE REPORT				ARBORIST TREE REPORT				ARBORIST TREE REPORT				ARBORIST TREE REPORT			
TREE #	SIZE	TYPE	TYPE	TREE #	SIZE	TYPE	TYPE	TREE #	SIZE	TYPE	TYPE	TREE #	SIZE	TYPE	TYPE
1	6"	SILVER POPLAR	31	10"	VALLEY OAK	61	5"	OAK	91	8"	VALLEY OAK	91	10"	VALLEY OAK	
2	6"	BLACK WALNUT	32	16"	VALLEY OAK	62	10"	BLACK WALNUT	92	10"	VALLEY OAK	92	10"	VALLEY OAK	
3	6"	VALLEY OAK	33	6"	COAST LIVE OAK	63	10"	BLACK WALNUT	93	10"	COAST LIVE OAK	93	10"	COAST LIVE OAK	
4	6"	BLACK WALNUT	34	18"	VALLEY OAK	64	50"	VALLEY OAK	94	10"+12"	VALLEY OAK	94	10"+12"	VALLEY OAK	
5	6"	SILVER POPLAR	35	18"	COAST LIVE OAK	65	12"	VALLEY OAK	95	10"	VALLEY OAK	95	10"	VALLEY OAK	
6	6"	SILVER POPLAR	36	6"	CORK OAK	66	6"	COAST LIVE OAK	96	4"	COAST LIVE OAK	96	4"	COAST LIVE OAK	
7	3"	VALLEY OAK	37	16"	VALLEY OAK	67	8"	VALLEY OAK	97	10"	COAST LIVE OAK	97	10"	COAST LIVE OAK	
8	10"	VALLEY OAK	38	8"	VALLEY OAK	68	10"	COAST LIVE OAK	98	10"	COAST LIVE OAK	98	10"	COAST LIVE OAK	
9	6"	VALLEY OAK	39	8"	CORK OAK	69	6"	VALLEY OAK							
10	6"	BLACK WALNUT	40	8"	COAST LIVE OAK	70	8"	COAST LIVE OAK							
11	8"	COAST LIVE OAK	41	8"	COAST LIVE OAK	71	6"	COAST LIVE OAK							
12	6"	COAST LIVE OAK	42	10"	VALLEY OAK	72	6"	COAST LIVE OAK							
13	8"	VALLEY OAK	43	3"	VALLEY OAK	73	8"	COAST LIVE OAK							
14	12"+14"	VALLEY OAK	44	3"	RED MAPLE	74	8"	VALLEY OAK							
15	10"	VALLEY OAK	45	3"	PURPLE PLUM	75	4"	COAST LIVE OAK							
16	8"	VALLEY OAK	46	12"	VALLEY OAK	76	6"	COAST LIVE OAK							
17	5"	VALLEY OAK	47	6"	VALLEY OAK	77	8"	VALLEY OAK							
18	5"	VALLEY OAK	48	8"	VALLEY OAK	78	10"	COAST LIVE OAK							
19	12"	VALLEY OAK	49	7"+8"	COAST LIVE OAK	79	4"	VALLEY OAK							
20	8"	COAST LIVE OAK	50	12"	COAST LIVE OAK	80	8"	COAST LIVE OAK							
21	8"	VALLEY OAK	51	12"	COAST LIVE OAK	81	8"	VALLEY OAK							
22	14"	VALLEY OAK	52	6"	ALEPPO PINE	82	10"	COAST LIVE OAK							
23	14"	VALLEY OAK	53	6"	BLACK WALNUT	83	14"	COAST LIVE OAK							
24	12"+10"	VALLEY OAK	54	6"	BLACK WALNUT	84	5"	VALLEY OAK							
25	10"	COAST LIVE OAK	55	6"	PERSIAN WALNUT	85	6"	COAST LIVE OAK							
26	16"	VALLEY OAK	56	8"	BLACK WALNUT	86	4"	COAST LIVE OAK							
27	6"	COAST LIVE OAK	57	6"	BLACK WALNUT	87	6"	COAST LIVE OAK							
28	8"	COAST LIVE OAK	58	8"	PERSIAN WALNUT	88	8"+10"	VALLEY OAK							
29	12"	VALLEY OAK	59	6"	BLACK WALNUT	89	8"	COAST LIVE OAK							
30	10"	COAST LIVE OAK	60	6"	BLACK WALNUT	90	8"	VALLEY OAK							

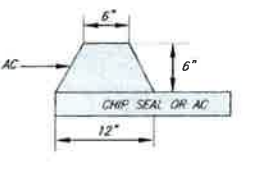
SITE INFORMATION
EXISTING ZONING = RURAL RESIDENTIAL
TOTAL SIZE ACREAGE = 2.16
SMALLEST LOT SIZE = 1.00
LARGEST LOT SIZE = 1.16
AVERAGE LOT SIZE = 1.08
WATER SUPPLY: = CITY OF CALISTOGA WATER
OWNER ADDRESS: RKMS INVESTMENTS LLC, 2960 FOOTHILL BLVD, CALISTOGA, CA 94515
DEVELOPER ADDRESS: DR. MANNY GHUMAN, 34501 7TH STREET, UNION CITY, CA 94587



- NOTES:**
- THIS MAP DOES NOT CONSTITUTE A BOUNDARY SURVEY. BOUNDARY INFORMATION SHOWN IS PER RECORD DATA ONLY.
 - HORIZONTAL CONTROL: RECORD DATA
 - AVERAGE CROSS SLOPE FOR SITE IS 1 PERCENT
 - ALL DATA SHOWN ON THIS MAP WAS PROVIDED BY ALBION SURVEYS, INC.



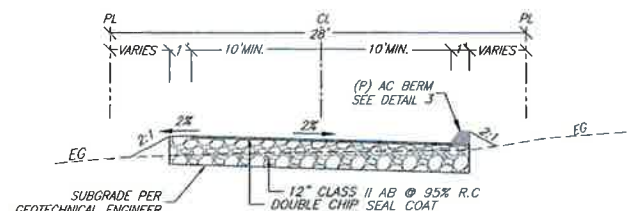
4 TYPICAL BIO-RETENTION FACILITY DETAIL N.T.S.



3 AC BERM DETAIL N.T.S.

- SAW CUT NEAT BY 12" MIN. INTO EXISTING, APPLY TACK OIL AND REBUILD FOR A TOTAL PAVED WIDTH OF 20' MIN. TRAVEL WAY.
- 1" SHOULDER, CLASS II AB @ 95% RELATIVE COMPACTION.
- SUBGRADE PER GEOTECHNICAL ENGINEER.

2 TYPICAL AC DRIVEWAY WIDENING SECTION N.T.S.



1 TYPICAL CHIP SEAL DRIVEWAY SECTION N.T.S.

LEGEND

- RECORD BOUNDARY LINE
- RECORD ADJOINING BOUNDARY LINE
- PROPOSED BOUNDARY LINE
- PROPOSED EASEMENT LINE
- FLOWLINE
- EDGE OF CONCRETE
- EDGE OF ASPHALT CONCRETE
- WOOD FENCE
- OVERHEAD WIRE
- BUILDING ENVELOPE
- BUILDING OVERHANG
- TREE DRIP LINE
- MAIL BOX
- WATER METER
- SEWER MANHOLE
- CLEAN-OUT
- TREE TYPE & DIA./DRIPLINE (ARBORIST NUMBER)
- EXISTING CONCRETE SURFACE
- PROPOSED CONCRETE SURFACE
- PROPOSED AC PAVEMENT SURFACE
- PROPOSED CHIP-SEAL SURFACE

TENTATIVE MAP

HOGAN LAND SERVICES
A CALIFORNIA CORPORATION
1702 4TH STREET
SANTA ROSA, CA 95404
APN: 011-400-003
www.hoganis.com

THIS MAP WAS PREPARED BY ME OR UNDER MY SUPERVISION AND TO THE BEST OF MY KNOWLEDGE AND BELIEF IT COMPLIES WITH ALL APPLICABLE REQUIREMENTS OF THE PROFESSIONAL LAND SURVEYING ACT.
MANNY GHUMAN IN MARCH, 2015
KENNETH E. CARR RICE 21.184
9.19.15

SJK	ASR	SJK	DATE 04/10/15	JOB # 1807
DRN	CHK	PM		