

95 brady street
san francisco, CA 94103
tel: 415.503.1411
fax: 415.503.1471

www.gouldevans.com

STAMP

CONSULTANTS

PROJECT

BOYS & GIRLS CLUBS OF
ST. HELENA AND CALISTOGA
NEW CALISTOGA CLUBHOUSE
1401 NORTH OAK STREET
CALISTOGA, CA 94515

REVISIONS

SHEET DATA

PC NO: PCXX-XXXXX
DATE: 12.09.2015
JOB NO.: 1115-0100
PHASE: USE-PERMIT
ISSUED FOR: -
SCALE: AS SHOWN

SHEET TITLE

GENERAL
NOTES, CODE,
SYMBOLS, INDEX
SHEET

SHEET NUMBER

A0.1

APPLICABLE CODES

- 2013 BUILDING STANDARDS ADMINISTRATIVE CODE, PART 1, CBCS
-2013 CALIFORNIA BUILDING CODE (CBC), PART 2 CBCS (2009 IBC AND CA AMENDMENTS)
-2013 CALIFORNIA ELECTRICAL CODE (CEC), PART 3, CBCS (2008 NATIONAL ELECT. CODE & CA AMENDMENTS)
-2013 CALIFORNIA MECHANICAL CODE (CMC), PART 4, CBCS (2009 UNIFORM MECHANICAL CODE AND CA AMENDMENTS)
-2013 CALIFORNIA PLUMBING CODE (CPC), PART 5, CBCS (2009 UNIFORM PLUMBING CODE & CA AMENDMENTS)
-2013 CALIFORNIA ENERGY CODE, PART 6, CBCS
-2013 CALIFORNIA HISTORICAL BUILDING CODE, PART 8, CBCS
-2013 CALIFORNIA FIRE CODE, PART 9, CBCS (2009 INTERNATIONAL FIRE CODE & CA AMENDMENTS)
-2013 CALIFORNIA REFERENCED STANDARDS, PART 12, CBCS
-TITLE 19 C.C.R., CH. 4, SUB-CH. 6 - ELEVATOR SAFETY ORDERS
-TITLE 19 C.C.R., PUBLIC SAFETY, SFM REGULATIONS
LIST OF FEDERAL CODES AND STANDARDS:
-NFPA 13, INSTALLATION OF SPRINKLER SYSTEMS, 2010 EDITION
-NFPA 72, NATIONAL FIRE ALARM CODE (CA AMENDED) 2010 EDITION (SEE UL STANDARD 1971 FOR "VISUAL DEVICES")
-REFERENCE CODE SECTION FOR NFPA STANDARDS-CBC (SFM) CHAPTER 35
-ASME A17.1/CSA B44-2007-SAFETY CODE FOR ELEVATORS
-BHMA A156.10-2008 AMERICAN NATIONAL STANDARD FOR POWER OPERATED PEDESTRIAN DOORS FOR AUTOMATIC BUILDING DOORS
-BHMA A156.19-2002 AMERICAN NATIONAL STANDARD FOR POWER ASSISTED AND LOW ENERGY POWER OPERATED DOORS FOR AUTOMATED DOORS
-2010 ADA STANDARDS FOR ACCESSIBLE DESIGN
-2015 CALISTOGA MUNICIPAL CODE

DRAWING INDEX

Table with 2 columns: Drawing Number and Title. Includes A 0.1 TITLE SHEET, C01 TOPOGRAPHIC SURVEY, C02 GRADING AND UTILITY PLAN, A 1.1 SITE PLAN, A 2.1 FLOOR PLAN, A 3.1 EXTERIOR ELEVATIONS, A 3.2 BUILDING SECTIONS, L 1.0 LANDSCAPE LAYOUT PLAN, L 2.0 IRRIGATION PLAN, L 3.0 PLANTING PLAN, L 4.0 DETAILS.

PROJECT LOCATION



PROJECT DATA

Table with 2 columns: Field and Value. Includes ADDRESS: 1401 NORTH OAK STREET CALISTOGA, CA 94515; APN: 011-140-056; PROJECT DESCRIPTION: A NEW BUILDING CONSISTING OF A GYM, GAMES ROOM, CLASSROOMS, KITCHEN, DINING & ADMINISTRATION OFFICES; GROSS SQUARE FOOTAGE: 13,800 GSF; LOT SQUARE FOOTAGE: 1.09 ACRES (-47,480 SF); TYPE OF CONSTRUCTION: TYPE V-B, FULLY SPRINKLERED; OCCUPANCY TYPE: A-3, B; SPRINKLER SYSTEM: PROVIDED; FIRE ALARM SYSTEM: PROVIDED.

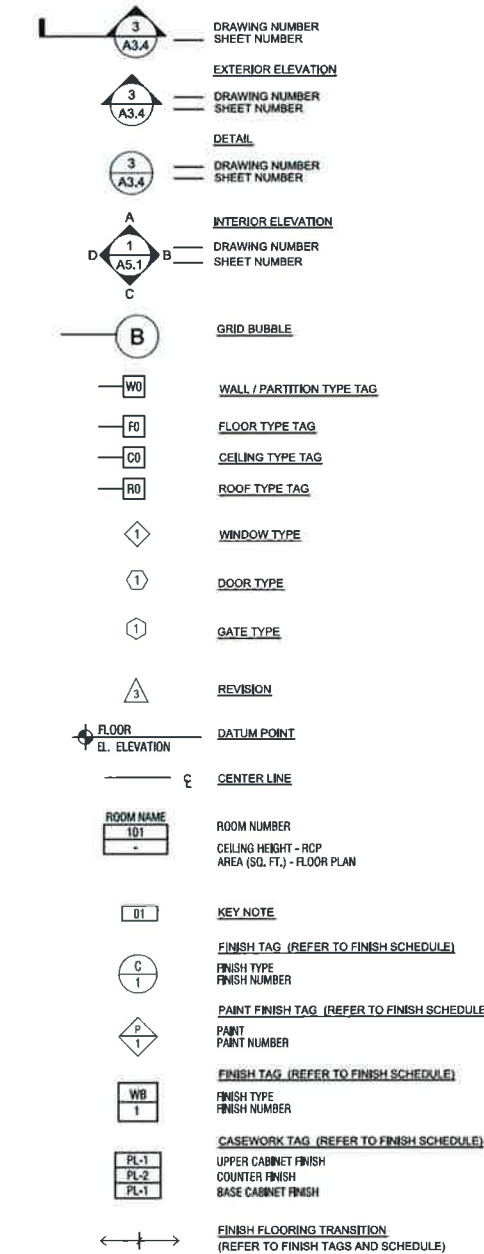
PROJECT DIRECTORY

Table with 2 columns: Category and Contact Information. Includes OWNER: BOYS & GIRLS CLUBS OF ST. HELENA AND CALISTOGA; ARCHITECT: GOULD EVANS; CIVIL: RSA-1515 4TH ST.; LANDSCAPE ARCHITECT: WENDT LANDSCAPE ARCHITECTURE; SPECIFICATIONS: JOHN A. RAEGER; CONTACT: JOHN RAEGER.

GENERAL NOTES

- 1. ALL WORK SHALL BE IN CONFORMANCE WITH ALL APPLICABLE BUILDING CODES, GOVERNING CODES, LAWS, ORDINANCES, AND REGULATIONS...
2. ALL WORK SHALL BE DONE IN ACCORDANCE WITH AIA GENERAL CONDITIONS DOCUMENTS' A-201, MOST CURRENT EDITION.
3. EXAMINATION OF THE SITE AND PORTIONS THEREOF WHICH AFFECT THIS WORK SHALL BE MADE BY THE GENERAL CONTRACTOR...
4. THE CONTRACT DOCUMENTS DESCRIBE DESIGN INTENT, AND ARE NOT INTENDED TO BE ALL INCLUSIVE...
5. CONTRACTOR SHALL BE RESPONSIBLE FOR THOROUGH COORDINATION OF TRADES...
6. CONTRACTOR SHALL VERIFY ALL DIMENSIONS, ELEVATIONS, EXISTING UTILITIES, AND CONDITIONS AT THE SITE...
7. ALL DIMENSIONS ARE TO FINISH FACE OF CONCRETE, CENTERLINE OF STEEL, FACE OF STUD OR CASEWORK UNLESS OTHERWISE NOTED...
8. ALL DIMENSIONS, NOTES AND DETAILS SHOWN ON ONE PORTION OF A DRAWING SHALL APPLY TYPICALLY TO ALL OPPOSITE HAND AND/OR CONDITIONS UNLESS OTHERWISE NOTED...
9. 'ALGN' SHALL MEAN TO ACCURATELY LOCATE FINISH FACES IN THE SAME PLANE.
10. THE CONTRACT DOCUMENTS ARE COMPLEMENTARY...
11. DO NOT SCALE DRAWINGS; DIMENSIONS SHALL GOVERN...
12. CONTRACTOR SHALL VERIFY LAYOUT OF PARTITIONS, DOORS, ELECTRICAL OUTLETS, DATA AND TELEPHONE OUTLETS, LIGHT FIXTURES, AND SWITCHES WITH ARCHITECT PRIOR TO PROCEEDING WITH CONSTRUCTION...
13. DAMAGE TO NEW AND EXISTING MATERIALS, FINISHES, STRUCTURES, AND EQUIPMENT SHALL BE REPAIRED OR REPLACED TO THE SATISFACTION OF THE OWNER...
14. ALL WORK LISTED, SHOWN, OR IMPLIED ON ANY CONTRACT DOCUMENT SHALL BE SUPPLIED AND INSTALLED BY THE CONTRACTOR...
15. IN CASE OF CONFLICT BETWEEN THE ARCHITECT'S AND CONSULTANT'S DRAWINGS IN THE LOCATION OF MATERIALS AND/OR EQUIPMENT...
16. ALL MANUFACTURED ARTICLES, MATERIALS, AND EQUIPMENT SHALL BE INSTALLED, CONNECTED, ERECTED, CLEANED, AND CONDITIONED PER THE MANUFACTURER'S INSTRUCTIONS...
17. ALL WORK NOTED 'BY OTHERS' OR 'IN LC' SHALL BE PROVIDED BY OWNER OR UNDER SEPARATE CONTRACT...
18. THE GENERAL CONTRACTOR SHALL REMOVE ALL RUBBISH AND WASTE MATERIALS OF ALL SUBCONTRACTORS AND TRADES...
19. CONTRACTOR SHALL NOT PROCEED WITH ANY WORK REQUIRING ADDITIONAL COMPENSATION BEYOND THE CONTRACT AMOUNT...
20. THE DESIGN ADEQUACY AND SAFETY OF ERECTION BRACING, SHORING, TEMPORARY SUPPORTS AND SCAFFOLDING IS THE SOLE RESPONSIBILITY OF THE CONTRACTOR.
21. THE INTENT OF THESE DRAWINGS AND SPECIFICATIONS IS THAT THE WORK OF ALTERATION, REHABILITATION, OR RECONSTRUCTION IS TO BE IN ACCORDANCE WITH TITLE-24, CALIFORNIA CODE OF REGULATIONS...
22. CONTRACTOR'S SAFETY BARRICADE (TEMPORARY FENCING) SHALL BE PROVIDED BY CONTRACTOR TO PROTECT STUDENTS, FACULTY, STAFF, AND PUBLIC FROM CONSTRUCTION ACTIVITIES...

SYMBOLS



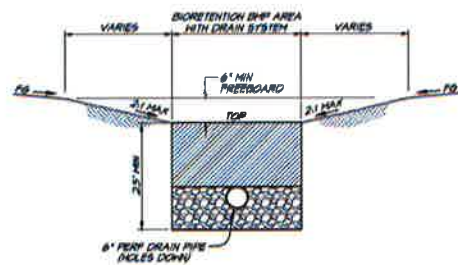
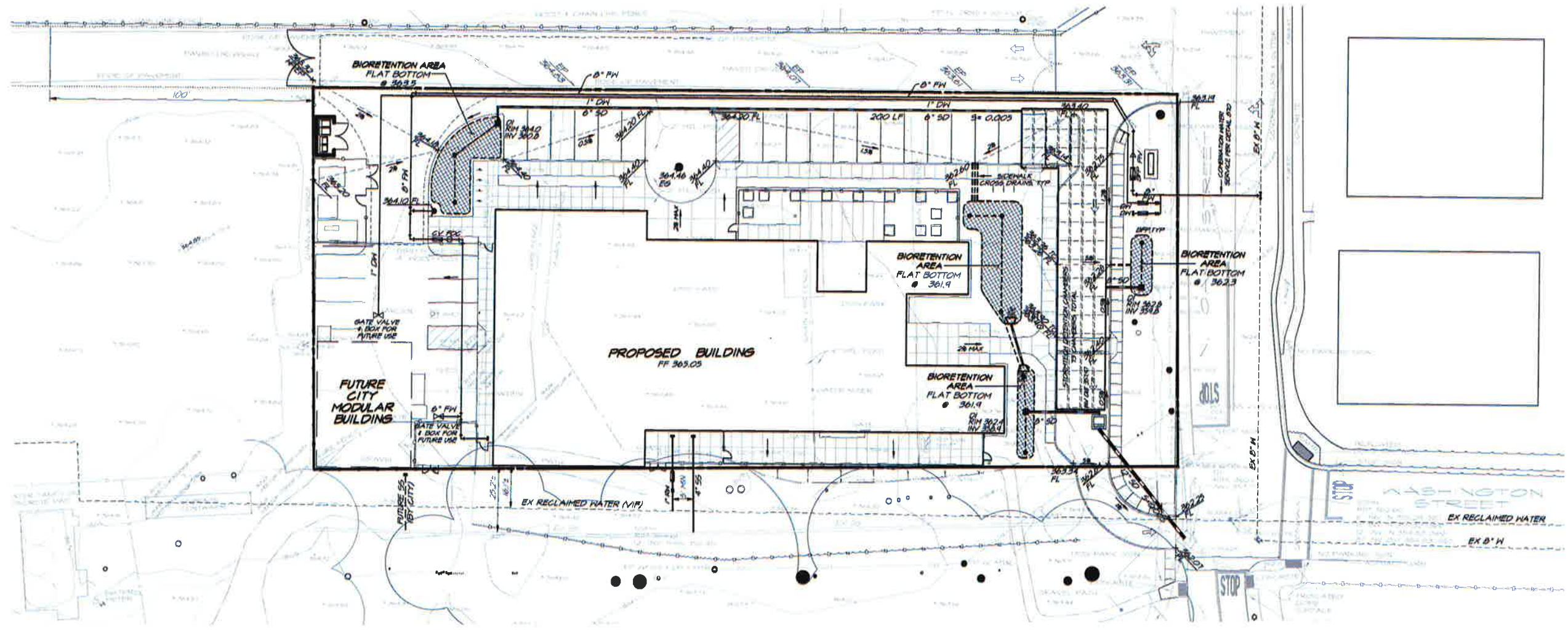
ABBREVIATIONS

Table of abbreviations and their full names. Includes AND, ANGLE, AT, CENTERLINE, DIAMETER OR ROUND, FOUND OR NUMBER, FINISH, EXISTING, NEW, ANCHOR BOLT, ABOVE, ACCESS, ACOUSTIC, ACOUSTICAL TILE, AREA, ADHESIVE, ADJUST, ABOVE FINISH FLOOR, AGGREGATE, ALUMINUM, ALTERNATE, ACCESS PANEL, APPROX, APPROXIMATE, ARCHITECTURAL, ASPHALT, BALANCING, BARRIER, BATTERED, BOARD, BITUMINUS, BLOCK, BLOCKING, BENCH MARK, BOTTOM, BASEMENT, BUILT UP ROOFING, CABINET, CAPACITY, CATCH BASIN, CEMENT, CERAMIC, CHANNEL, CONTROL JOINT, CEILING, CALCULATING, CLOSURE, CLEAR, CONCRETE MASONRY UNIT, COLLAR, CONC, CONCRETE, CONNL, CONTINUOUS, CONTR, CONTRACTOR, CORCOR, CERAMIC TILE, CENTER, CTR, COUNTERSINK, DOUBLE, DEPARTMENT, DETAIL, DRINKING FOUNTAIN, DIA, DIAGONAL, DIMENSION, DISP, DIV, DOWN, DR, DOOR, DRAWING, DWL, EXISTING, EAST, EACH, EXPANSION BOLT, EXPANSION JOINT, ELEVATION, ELECTRICAL, ELEV, EMERGENCY, ENCL, ELECTRICAL PANELBOARD, EQ, EQUIP, EXC, EXHAUST, EXTERIOR, EXTR, FAB, FABRICATE, FLAT BAR, F.C., FLOOR DRAIN, FDN, FIRE EXTINGUISHER, F.E.C., F.F., FIRE HYDRANT, F.H.C., F.H.S., FIN, FINISH (ED), FINISH, FLEX, FLR, FLOOR, F.O.C., FACE OF CONCRETE, F.O.F., FACE OF FINISH, F.O.S., FACE OF STUD, F.O.W., FACE OF WALL, FT, FULL SIZE, FT, FEET, FOOT, FTG, FOOTING, FURR, GAUGE, GALLON, GALV, GALVANIZED, GB, GRAB BAR, GRK, GRASS, GR, GRADE, GALVANIZED SHEET METAL, GYPSUM WALL BOARD, GYP, HEIGHT (DIM), H, HOSE BIB, HOLLOW CORE, HARDWOOD, HARDWARE, HGT, HEIGHT, HOL, HOLLOW METAL, HLL, HOLLOW, HOR, HORIZONTAL, HP, HIGH POINT, HR, HOUR, HT, HEIGHT, INS, INSIDE DIAMETER, INF, INFORMATION, INS, INSULATION, INT, INTERIOR, INV, INVERT, JAN, JANITOR, JST, JOIST, JT, JOINT, K.O., KNOCK OUT, KIT, KITCHEN, K.P., KICK PLATE, L, LENGTH (DIM), LAM, LAMINATE, LAMINATED, LAV, LAVATORY, LBS, POUNDS, LIN, LINEAR, LT, LIGHT, LTO, LIGHTING, MARB, MARBLE, MAS, MASONRY, MAT, MATERIAL, MAX, MACHINE BOLT, MEDICINE CABINET, MECH, MECHANICAL, MEMB, MEMBRANE, MANUFACTURER, MAPPLE, MFR, MANUFACTURER, MIN, MINIMUM, MISC, MISCELLANEOUS, MLDG, MOLDING, M.S., MOUNTED MACHINE SCREW, MTD, MOUNTED, MET, METAL, MILLION, NEW, NORTH, NEG, NEGATIVE, NOT IN CONTRACT, NO, NUMBER, NO, NUMBER, N.T.S., NOT TO SCALE, OBS, OBSOLETE, O.C., ON CENTER, O.D., OUTSIDE DIAMETER, O.F.D., OVERFLOW DRAIN, O.F.S., OVERFLOW SCUPPER, OPENING, OPP, OPPOSITE, O.V., OVERHEAD, O.C., OVERHEAD, PART, PARTITION, P.B., PANK BAR, PERF, PERFORATED, PERF, PERFORATED, PL, PLATE, P.L., PLASTIC LAMINATE, PLAS, PLASTER, PLY, PLYWOOD, PNL, PANEL, PNT, PAINT/PAINTEED, PCL, POLISH; POLISHED, PR, PRECAST, PREFABRICATED, PRELIM, PRELIMINARY, PROJ, PROJECT/PROJECTION, PRIP, POUNDS PER SQ. INCH, PT, POINT, PTD, PAINTED, P.T.D., PAPER TOWEL DISPENSER, Q.T., QUARRY TILE, QTR, QUARTER, RESER, RISER, RAD, RADUIS, R.A.G., RETURN AIR GRILLE, RUBBER BASE, R.C.P., REFLECTED CEILING PLAN, R.D., ROOF DRAIN, R.W.D., REDWOOD, REF, REFRIGERATOR, REF, REFRIGERATOR, RGTR, REGISTER, REGD, REGULATED, RESK, RESERVE, RETRN, RETURN, REV, REVISION, RFG, ROOFING, RGTR, REGISTER, RND, ROUND, R.O., ROUGH OPENING, RUBER, RUBBER, RWL, RAIN WATER LEADER, S, SOUTH, SEE ANCH. DWGS., S.A.S.A., SHEET MEMBRANE, S.C., SOLID CONE, S.C.D., SEAT COVER DISP., S.E.D., SEE ELEC. DWGS., SCHED, SCHEDULE SCHEDULED, S.D., SCOP DISPENSER, SECT, SECTION, SHWR, SHOWER, SHT, SHEET, SHG, SHEATHING, SIM, SIMILAR, S.J., SEISMIC JOINT, S.M.D., SEE LANDSCAPE DWGS., SEE MECHANICAL DWGS., S.N.D., SANITARY NAPKIN DISPENSER, S.O.G., SLAB ON GRADE, S.P.D., SEE PLUMBING DWGS., SPECIFICATIONS, SQ, SQUARE, S.S.D., SEE STRUCT. DWGS., S.S.K., SERVICE SINK, S.S.M., STANDING SEAM METAL, STA, STATION, STL, STANDARD STEEL, STOR, STORAGE, STRUC, STRUCTURAL, SUB, SUBSTITUTE, SUPP, SUPERIMPOSED, SUSP, SUSPENDING SUSPENDED, SYM, SYMMETRICAL, SYS, SYSTEM, T, THREAD, TONGUE AND GROOVE, T.B., TOWEL BAR, T.C.S., THERM COATED RAIN SCREEN, THERM, THERMOSTAT, THICK, THICK, THRESH, THRESHOLD, THRU, THROUGH, TLT, TOILET, TOP, TOP OF, TOPPING, TOP, TOP OF PAVEMENT, T.P.D., TUBET FASTER DISP., TV, TELEVISION, T.O.W., TOP OF WALL, TYP, TYPICAL, UNFIN, UNFINISHED UNLESS OTHERWISE NOTED, UR, URINAL, UTIL, UTILITY, VAR, VARIABLE, V.B., VINYL BASE, V.C.T., VINYL COMPOSITION TILE, VERT, VERTICAL, VEST, VESTIBULE, VGR, VERTICAL GRAIN, V.I.P., VERIFY IN FIELD, VOL, VOLUME, V.S., VINYL SHEET, W, WIDTH (DIM), W, WITH, W, WITHOUT, WANS, WANSICOT, WC, WATER CLOSET, WD, WOOD, WD, WASH/DISHWASHER, W.F., WIDE FLANGE (STEEL), W.G., WIRE GLASS, W.H., WATER HEATER, WB, WHITE BOARD, WM, WALL MOUNT, WNDW, WINDOW, W.O., WHERE OCCURS, W.P., WATERPROOF, W.S., WEATHERSTRIP, WT, WEIGHT, W.W.F., WELDED WIRE FABRIC, W.W.M., WELDED WIRE MESH

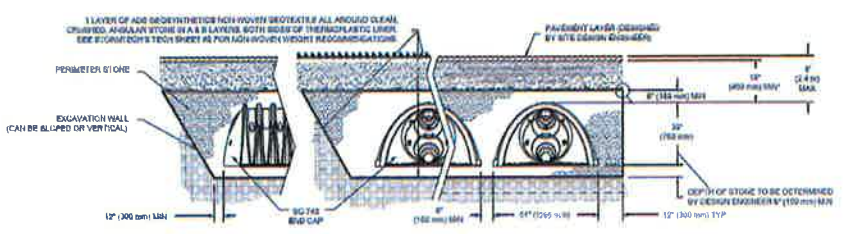


**BOYS & GIRLS CLUBS OF
ST. HELENA AND CALISTOGA
NEW CALISTOGA CLUBHOUSE**

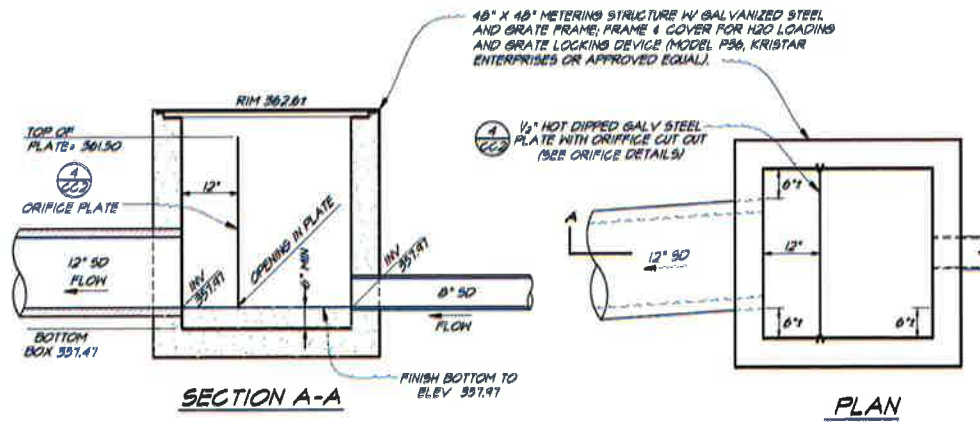
1401 NORTH OAK STREET
CALISTOGA, CA 94515



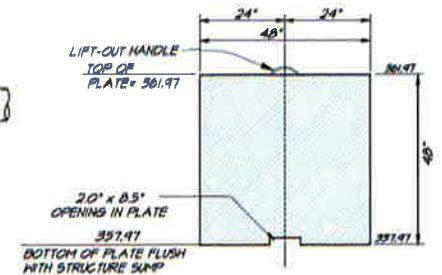
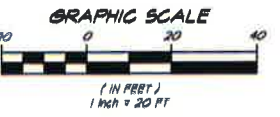
1 BIORETENTION AREA
NOT TO SCALE



2 DETENTION SYSTEM - STORMTECH SC-140
NOT TO SCALE



3 DETENTION MANIFOLD AND METERING STRUCTURE DETAIL
NOT TO SCALE



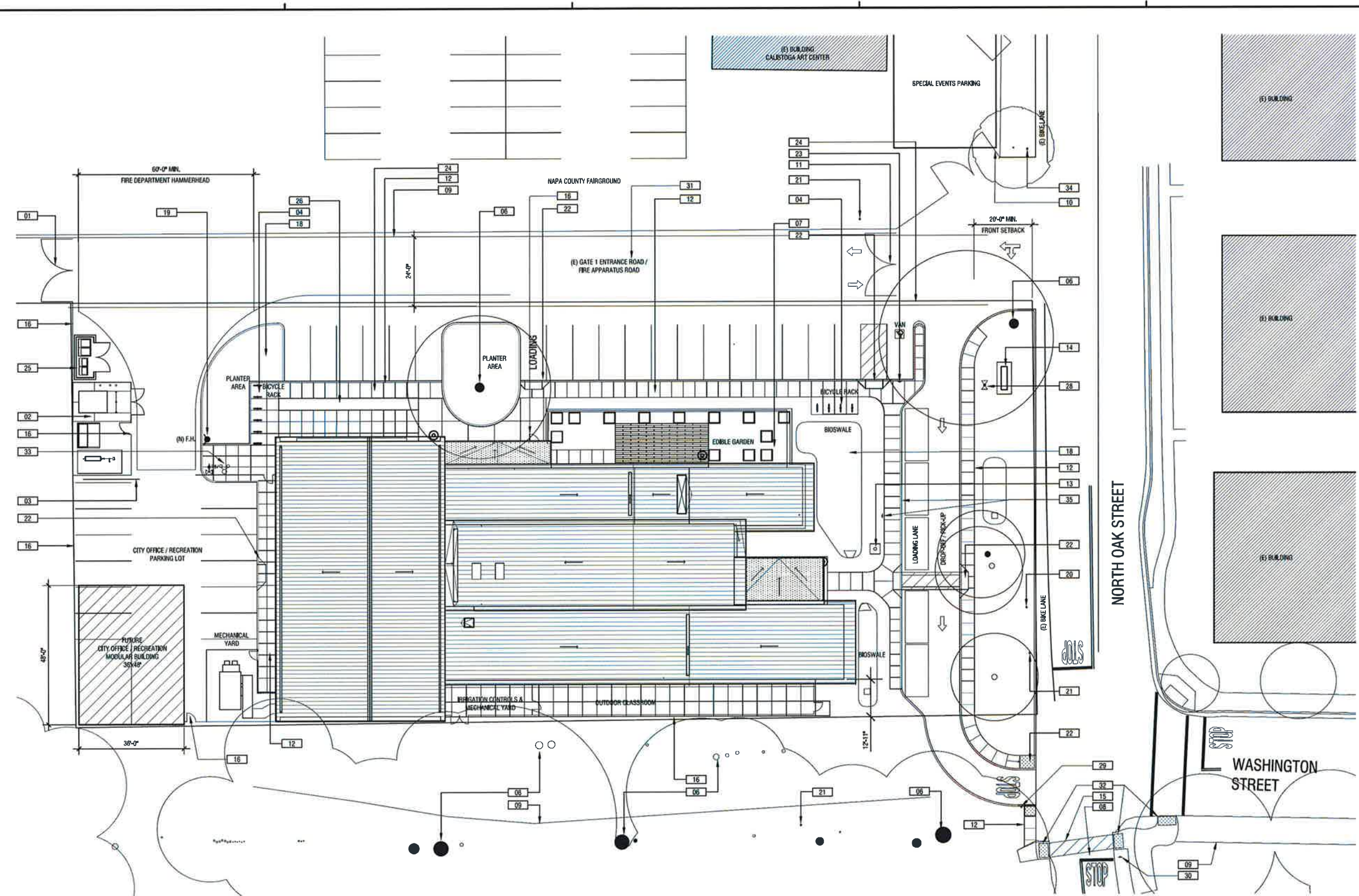
4 ORIFICE PLATE DETAIL
NOT TO SCALE

SHEET DATA

PC NO: PCXX-XXXXXX
DATE: 12.08.2016
JOB NO: 1118-0100
PHASE: DESIGN DEVELOP.
ISSUED FOR:
SCALE: AS SHOWN

SHEET TITLE

**GRADING
& UTILITY
PLAN**



1 SITE PLAN
SCALE: 1/16" = 1'-0"

SITE PLAN KEY NOTES

- 01 (N) LOCATION OF (E) GATES
- 02 (N) UTILITY YARD, SEE MEP DRAWINGS
- 03 (N) ROLLING GATE, S.L.D.
- 04 (N) BICYCLE PARKING (TYP. 2 LOCATIONS), S.L.D.
- 05 WIDEN (E) ROAD FOR TWO-WAY DRIVE
- 06 (E) TREE TO REMAIN, PROTECT IN PLACE, SEE LANDSCAPE DWGS.
- 07 (N) EDIBLE GARDEN, S.L.D.
- 08 RE-STRIPPE "STOP" AT NEW LOCATION, BY CITY OF CALISTOGA
- 09 (E) FENCE TO REMAIN, PROTECT IN PLACE
- 10 (E) GATES TO REMAIN
- 11 RELOCATE (E) GATES
- 12 (N) CONCRETE SIDEWALK, S.C.D.
- 13 (N) FLAG POLE, SEE LANDSCAPE DWGS.
- 14 (N) MONUMENT SIGN PER BGC STANDARDS, SEE DETAIL

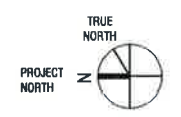
- 15 (N) CROSSWALK STRIPING BY CITY OF CALISTOGA
- 16 (N) FENCE & GATE, SEE LANDSCAPE DWGS.
- 17 (N) MECHANICAL YARD & FENCING, SEE MECH. DWGS.
- 18 (N) BIOSWALE AREA, SEE CIVIL & LANDSCAPE DWGS.
- 19 (N) FIRE HYDRANT, S.C.D.
- 20 (E) POWER POLE, SEE ELECTRICAL DWGS.
- 21 (E) POWER POLE & LIGHT POST, SEE ELECTRICAL DWGS.

- 22 (N) CURB RAMP W/ TRUNCATED DOMES S.C.D.
- 23 (N) PARKING SIGNAGE ON POST
- 24 REMOVE EXISTING TREE(S)
- 25 (N) TRASH ENCLOSURE CMU W/ METAL GATES
- 26 (N) PLANTER AREA, SEE LANDSCAPE DWGS.
- 27 (N) RECYCLED WATER TANK & PUMP, S.L.D.
- 28 (N) DOUBLE DETECTOR CHECK, S.C.D.

- 29 (N) STOP SIGN BY G.C.
- 30 (E) STOP SIGN TO REMAIN, PROTECT IN PLACE
- 31 IMPROVE (E) AC PAVED ROAD, S.C.D. FOR ADDL INFO & EXTENT
- 32 (E) TRUNCATED DOMES AT LOADING TO REMAIN, PROTECT IN PLACE
- 33 (N) PV AND FDC, S.C.D.
- 34 (N) POWER POLE, S.E.D.
- 35 PAINT CURB GREEN AND PROVIDE SIGN PER C.M.C STANDARDS FOR 15-MINUTE TRIMED PARKING

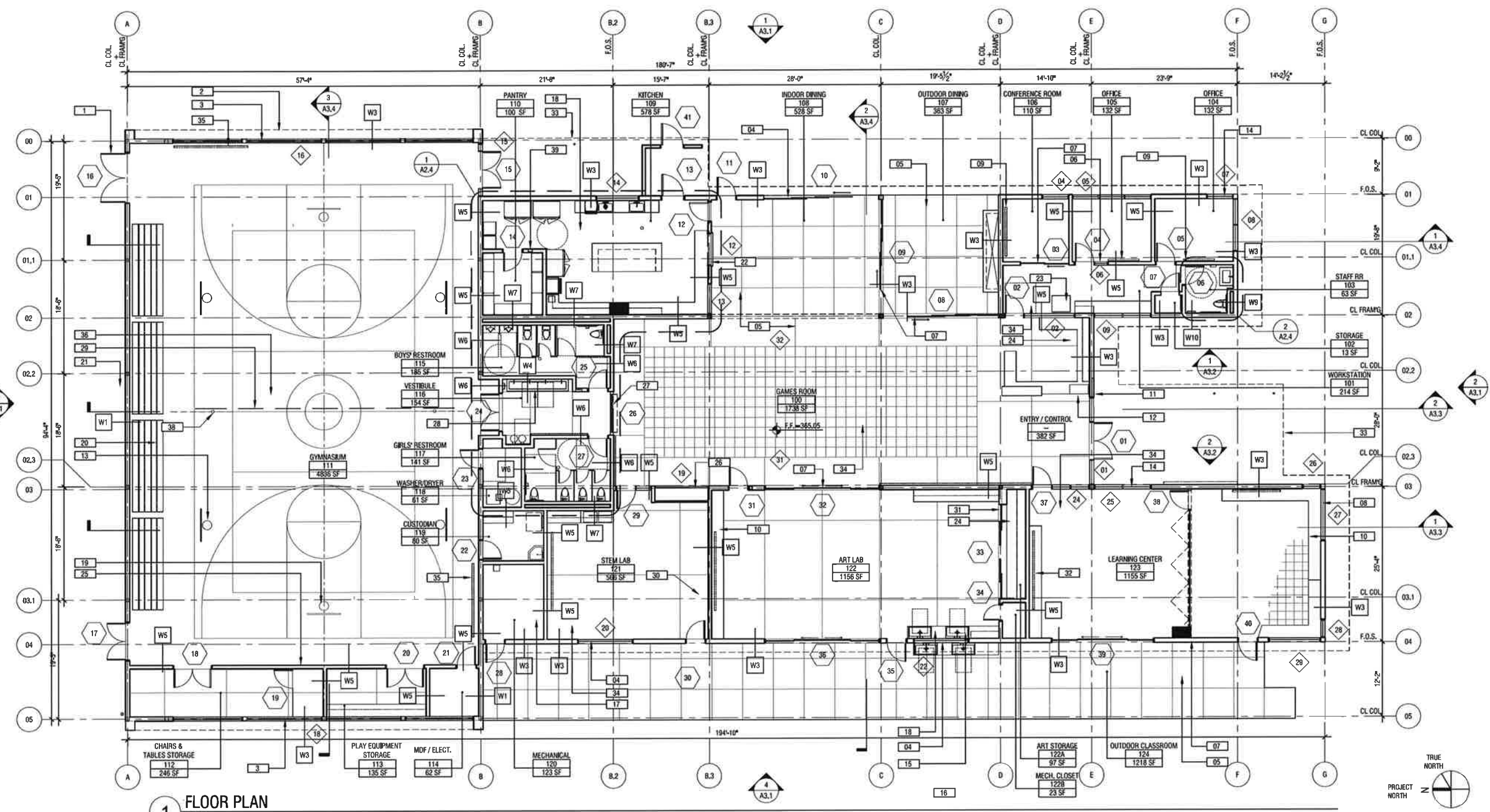
GENERAL NOTES

- 1. FOR TREE REMOVAL SCOPE, SEE CIVIL & LANDSCAPE DWGS.



\\sffile01\projects\boysandgirls\calistoga\111501-000-working\files\civil\interior\misco\current\Drawings\plan\sheet\A1.1 SITE PLAN.dwg, 12/9/2015 11:22:47 AM

**BOYS & GIRLS CLUBS OF
ST. HELENA AND CALISTOGA
NEW CALISTOGA CLUBHOUSE**
1401 NORTH OAK STREET
CALISTOGA, CA 94515



1 FLOOR PLAN
SCALE: 1/8" = 1'-0"

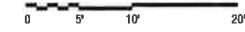
PLAN KEY NOTES

- | | | |
|--|---|--|
| 01 4'-0" W x 10'-0" H DOUBLE DOORS | 19 MOTORIZED, CEILING-MOUNTED, ACRYLIC BACKBOARD (TYP. 2) | 37 FENCE, S.I.D. |
| 02 BENCH | 20 3-TIER, MOBILE BLEACHERS | 38 EQUIPMENT SLEEVE AT FLOOR (TYP. 2), SEE DETAIL /_ |
| 03 CLERESTORY KALWALL SYSTEM ABOVE - TRANSLUCENT WINDOWS | 21 VERTICAL FINS W/ CLERESTORY ABOVE | 39 FIRE EXTINGUISHER IN WALL CABINET |
| 04 CLERESTORY ALUMINUM WINDOWS ABOVE | 22 SERVING WINDOW W/ ROLL-UP DOOR | |
| 05 CONCRETE FLOORING | 23 COPIER (MC) | |
| 06 SIDE LITE, TYP. | 24 TALL CABINETS | |
| 07 SLIDING GLASS DOORS | 25 WALL PADDING (TYP. 4 WALLS) | |
| 08 ALUMINUM FRAMED WINDOW, TYP. | 26 BUILT-IN TROPHY CASE | |
| 09 MARKERBOARD | 27 SLIDING WOOD DOOR | |
| 10 CASEWORK | 28 H/H/O D.F. | |
| 11 RECESSED MESSAGE BOARD | 29 CEILING MOUNTED, ROLL-DOWN CURTAIN OPENER | |
| 12 BUILT-IN BROCHURE SHELF BELOW COUNTER | 30 MARKER BOARD + PROJECTOR SCREEN | |
| 13 RETRACTABLE, WALL-MOUNTED, WOOD BACKBOARD (TYP. 4) | 31 MARKER BOARDS ON SLIDING TRACKS | |
| 14 ALUMINUM STOREFRONT | 32 MARKER BOARD TYP. | |
| 15 UPPER CABINETS, TYP. | 33 AWNING OVERHANG | |
| 16 SINK W/ BUBBLER (TYP. 3) | 34 CARPET TILE | |
| 17 WALL LADDER TO ROOF HATCH | 35 WALL MOUNTED SCOREBOARD (TYP. 2) | |
| 18 QUARRY TILE FLOOR | 36 MAPLE HARDWOOD COURT FLOOR | |

GENERAL NOTES

- SEE DRAWINGS TO VERIFY APPLICABLE KEY NOTES FOR EACH DRAWING
- FURNITURE FOR REFERENCE ONLY, NOT IN CONTRACT, TYP.
- SEE ELEVATIONS FOR CLERESTORY WINDOW LOCATIONS, TYP.

LEGEND



SHEET DATA

PC NO: PCXX-XXXXXX
 DATE: 12.09.2015
 JOB NO.: 1115-0100
 PHASE: USE-PERMIT
 ISSUED FOR: -
 SCALE: AS SHOWN

SHEET TITLE

FLOOR PLAN

SHEET NUMBER

A2.1

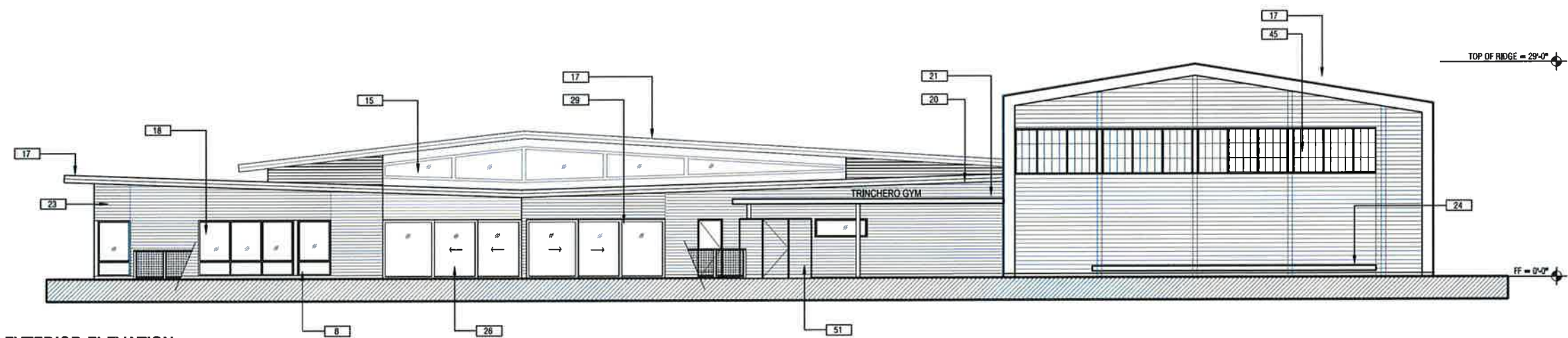
\\SFLE01\projects\BOYSANDGIRLS\CLUB\11150100\H-Working\Files\5-Architect-Interiors\4-Misc\Current Drawings\Plat Sheets\A2.1 - FLOOR PLAN.dwg, 12/9/2015 11:25:04 AM

SHEET DATA

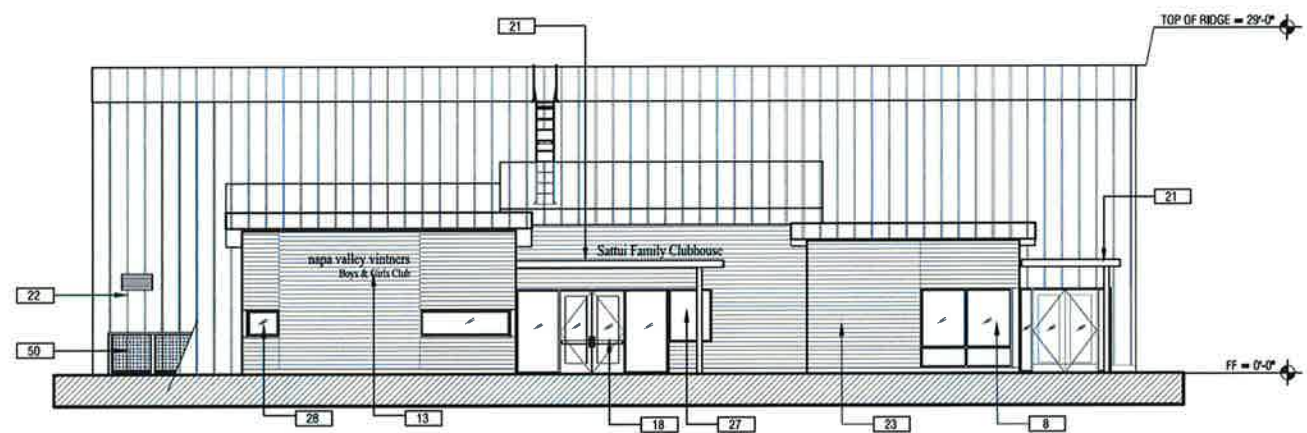
PC NO: PCXX-XXXXXX
DATE: 12.09.2015
JOB NO.: 1115-0100
PHASE: USE-PERMIT
ISSUED FOR: -
SCALE: AS SHOWN

SHEET TITLE

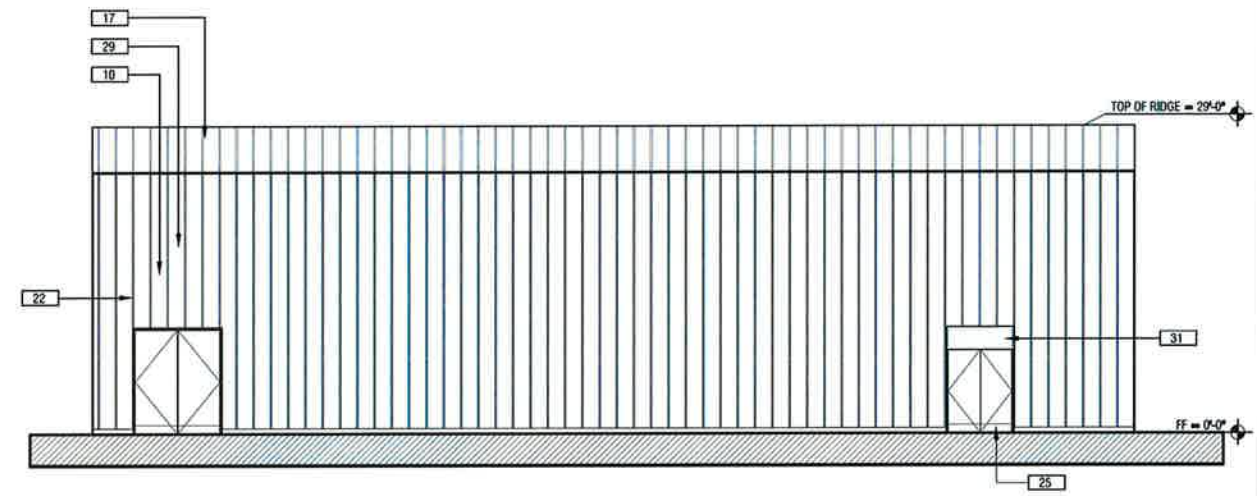
**EXTERIOR
ELEVATIONS**



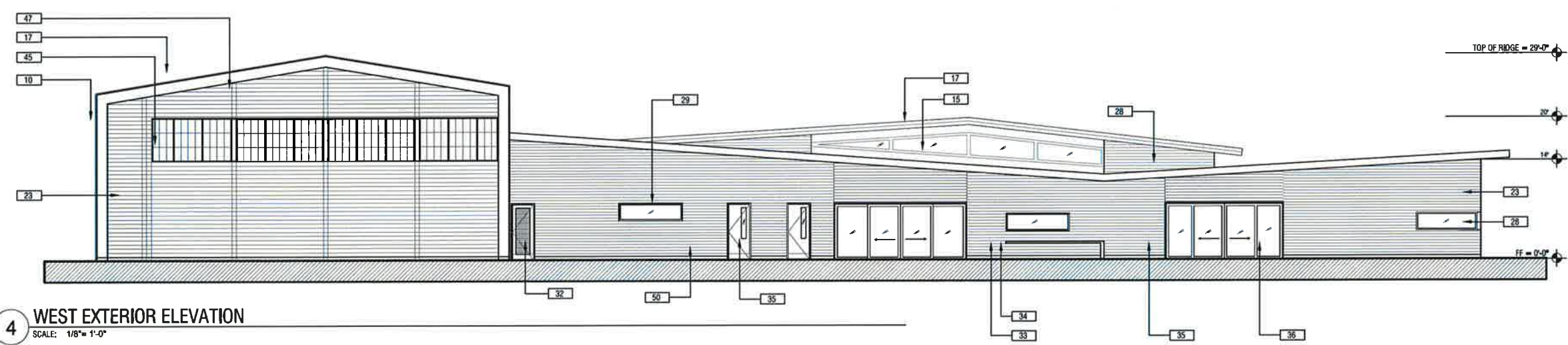
1 EAST EXTERIOR ELEVATION
SCALE: 1/8" = 1'-0"



2 SOUTH EXTERIOR ELEVATION
SCALE: 1/8" = 1'-0"



3 NORTH EXTERIOR ELEVATION
SCALE: 1/8" = 1'-0"



4 WEST EXTERIOR ELEVATION
SCALE: 1/8" = 1'-0"

\\sffile01\projects\boysandgirlsclub\11501000\working files\5-architect\interiors\misc\current drawings\old sheets\A3.1 EXTERIOR ELEVATIONS.dwg, 12/9/2015 11:52:27 AM

**BOYS & GIRLS CLUBS OF
ST. HELENA AND CALISTOGA
NEW CALISTOGA CLUBHOUSE**
1401 NORTH OAK STREET
CALISTOGA, CA 94515

SHEET DATA

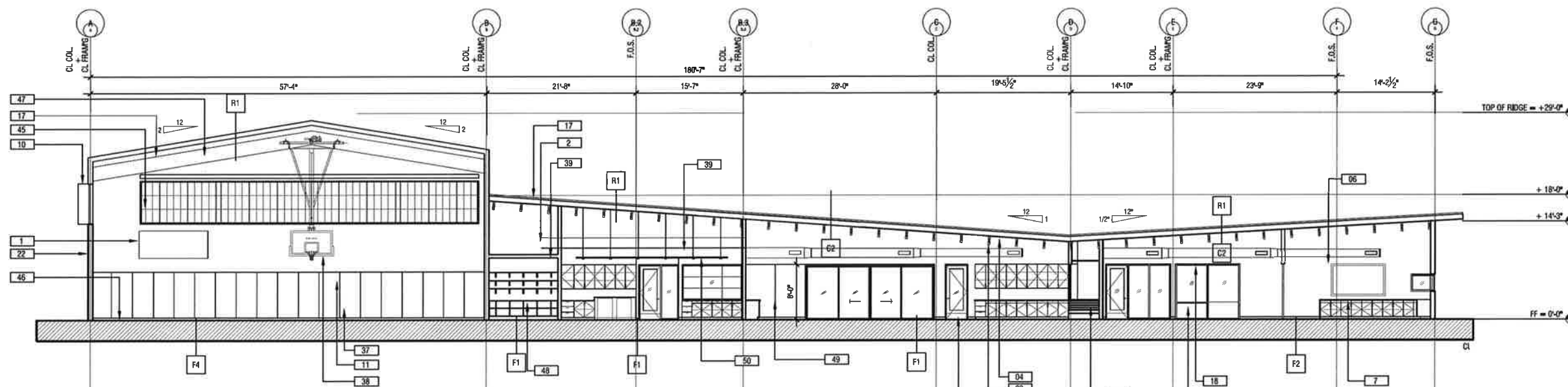
PC NO: PCXX-XXXXXX
DATE: 12.09.2015
JOB NO.: 1115-0100
PHASE: USE-PERMIT
ISSUED FOR: -
SCALE: AS SHOWN

SHEET TITLE

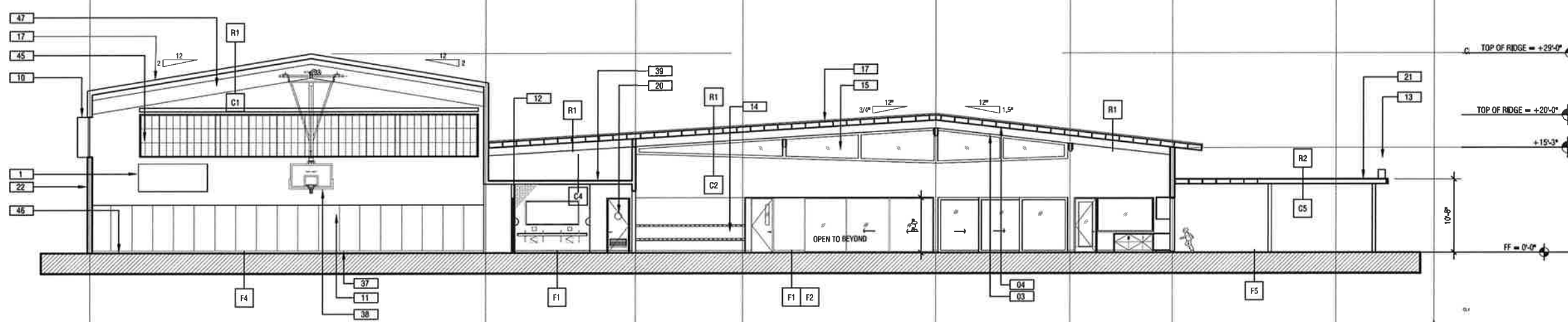
**BUILDING
SECTIONS**

SHEET NUMBER

A3.2



1 BUILDING SECTION - GYM, STEM LAB, ART LAB, LEARNING CENTER
SCALE: 1/8" = 1'-0"



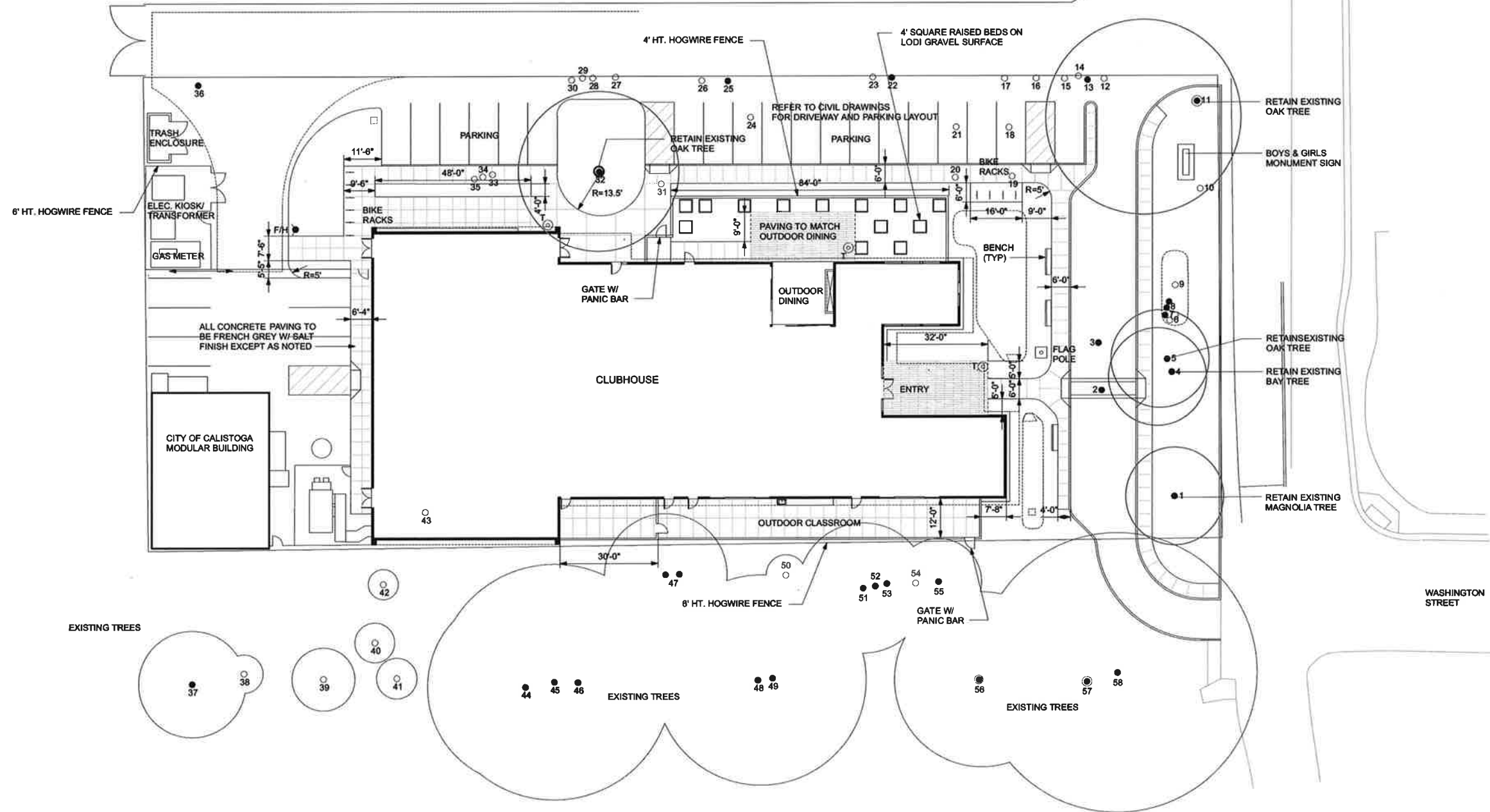
2 BUILDING SECTION - GYM, GAMES ROOM, ENTRY
SCALE: 1/8" = 1'-0"

\\staff01\projects\boysandgirlsclub\11501000\working\11515-architect\interiors\4-Misc\current\drawings\plot sheets\A3.2 BUILDING SECTIONS.dwg, 12/9/2015 11:51:31 AM

EXISTING TREES (FROM PMI TREE SURVEY 2.12.2015)

NO.	SIZE (CAL.)	COMMON NAME	NO.	SIZE (CAL.)	COMMON NAME	NO.	SIZE (CAL.)	COMMON NAME
1	20"	SOUTHERN MAGNOLIA	21	3"	PEAR	41	6"	BLACK WALNUT (MULTI)
2	11"	PERSIMMON	22	18"	VALLEY OAK	42	4"	WILD PLUM
3	11"	PERSIMMON	23	5"	VALLEY OAK	43	7"	COAST LIVE OAK
4	20"	CALIFORNIA BAY	24	5"	WILD PLUM (MULTI)	44	48"	VALLEY OAK
5	20"	VALLEY OAK	25	15"	VALLEY OAK	45	72"	VALLEY OAK
6	6"	BLACK WALNUT	26	4"	COAST LIVE OAK	46	14"	ENGLISH WALNUT
7	16"	BLACK WALNUT	27	6"	VALLEY OAK	47	25"	DOUGLAS FIR
8	14"/11"	BLACK WALNUT (2)	28	4"	WILD PLUM (MULTI)	48	66"	VALLEY OAK
9	9"	BLACK WALNUT	29	3"	COAST LIVE OAK	49	14"	VALLEY OAK
10	4"	BLACK WALNUT (MULTI)	30	4"	WILD PLUM (MULTI)	50	4"	WILD PLUM
11	45"	VALLEY OAK	31	3"	WILD PLUM	51	24"	DOUGLAS FIR
12	7"	WILD PLUM	32	38"	VALLEY OAK	52	15"	DOUGLAS FIR
13	17"	VALLEY OAK	33	11"	COAST LIVE OAK	53	16"	DOUGLAS FIR
14	7"	VALLEY OAK	34	10"	COAST LIVE OAK	54	10"	DOUGLAS FIR
15	10"	VALLEY OAK	35	4"	VALLEY OAK	55	16"	DOUGLAS FIR
16	3"	VALLEY OAK	36	20"	VALLEY OAK	56	36"	VALLEY OAK
17	10"	VALLEY OAK	37	27"	BLACK WALNUT	57	39"	VALLEY OAK
18	5"	WILD PLUM	38	7"	HACKBERRY	58	60"	VALLEY OAK
19	4"	WILD PLUM (MULTI)	39	8"	BLACK WALNUT (MULTI)			
20		AMERICAN PERSIMMON	40	5"	WILD PLUM			

○ DENOTES TREE SMALLER THAN 12" CAL
○ DENOTES TREE LARGER THAN 12" CAL
● DENOTES TREE LARGER THAN 12" CAL (OR VALLEY OAK) TO BE REMOVED



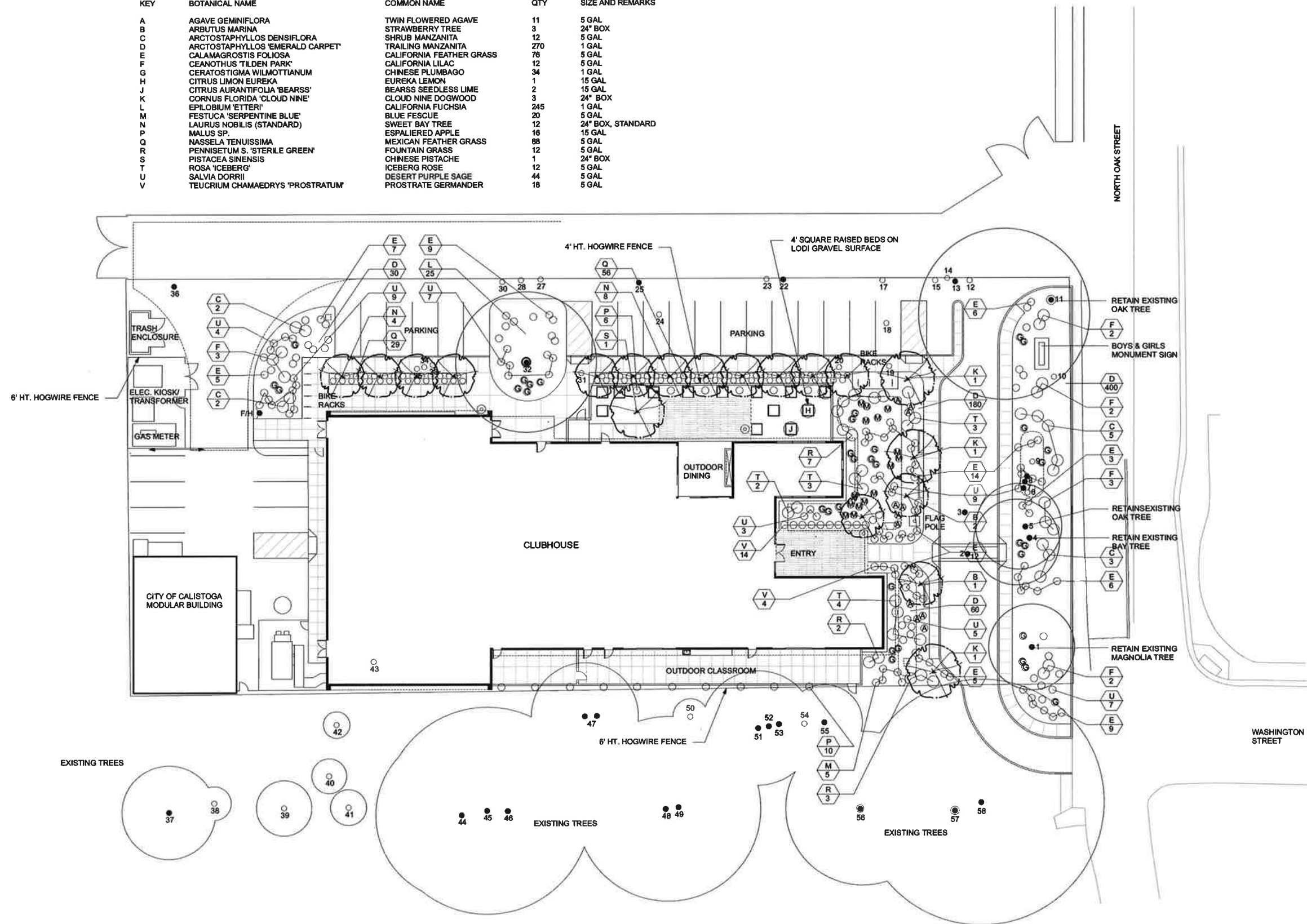
WASHINGTON STREET

NORTH OAK STREET



PLANT LIST

KEY	BOTANICAL NAME	COMMON NAME	QTY	SIZE AND REMARKS
A	AGAVE GEMINIFLORA	TWIN FLOWERED AGAVE	11	5 GAL
B	ARBUTUS MARINA	STRAWBERRY TREE	3	24" BOX
C	ARCTOSTAPHYLOS DENSIFLORA	SHRUB MANZANITA	12	5 GAL
D	ARCTOSTAPHYLOS 'EMERALD CARPET'	TRAILING MANZANITA	270	1 GAL
E	CALAMAGROSTIS FOLIOSA	CALIFORNIA FEATHER GRASS	76	5 GAL
F	CEANOTHUS 'TILDEN PARK'	CALIFORNIA LILAC	12	5 GAL
G	CERATOSTIGMA WILMOTTIANUM	CHINESE PLUMBAGO	34	1 GAL
H	CITRUS LIMON EUREKA	EUREKA LEMON	1	15 GAL
J	CITRUS AURANTIFOLIA 'BEARSS'	BEARSS SEEDLESS LIME	2	15 GAL
K	CORNUS FLORIDA 'CLOUD NINE'	CLOUD NINE DOGWOOD	3	24" BOX
L	EPILOBUM 'ETTERI'	CALIFORNIA FUCHSIA	245	1 GAL
M	FESTUCA 'SERPENTINE BLUE'	BLUE FESCUE	20	5 GAL
N	LAIURUS NOBILIS (STANDARD)	SWEET BAY TREE	12	24" BOX, STANDARD
P	MALUS SP.	ESPALIERED APPLE	16	15 GAL
Q	NASSELA TENUISSIMA	MEXICAN FEATHER GRASS	88	5 GAL
R	PENNISETUM S. 'STERILE GREEN'	FOUNTAIN GRASS	12	5 GAL
S	PISTACEA SINENSIS	CHINESE PISTACHE	1	24" BOX
T	ROSA 'ICEBERG'	ICEBERG ROSE	12	5 GAL
U	SALVIA DORRII	DESERT PURPLE SAGE	44	5 GAL
V	TEUCRIUM CHAMAEDRYS 'PROSTRATUM'	PROSTRATE GERMANDER	18	5 GAL



WASHINGTON STREET

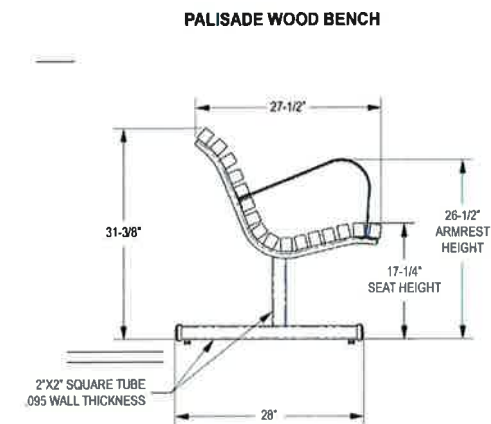
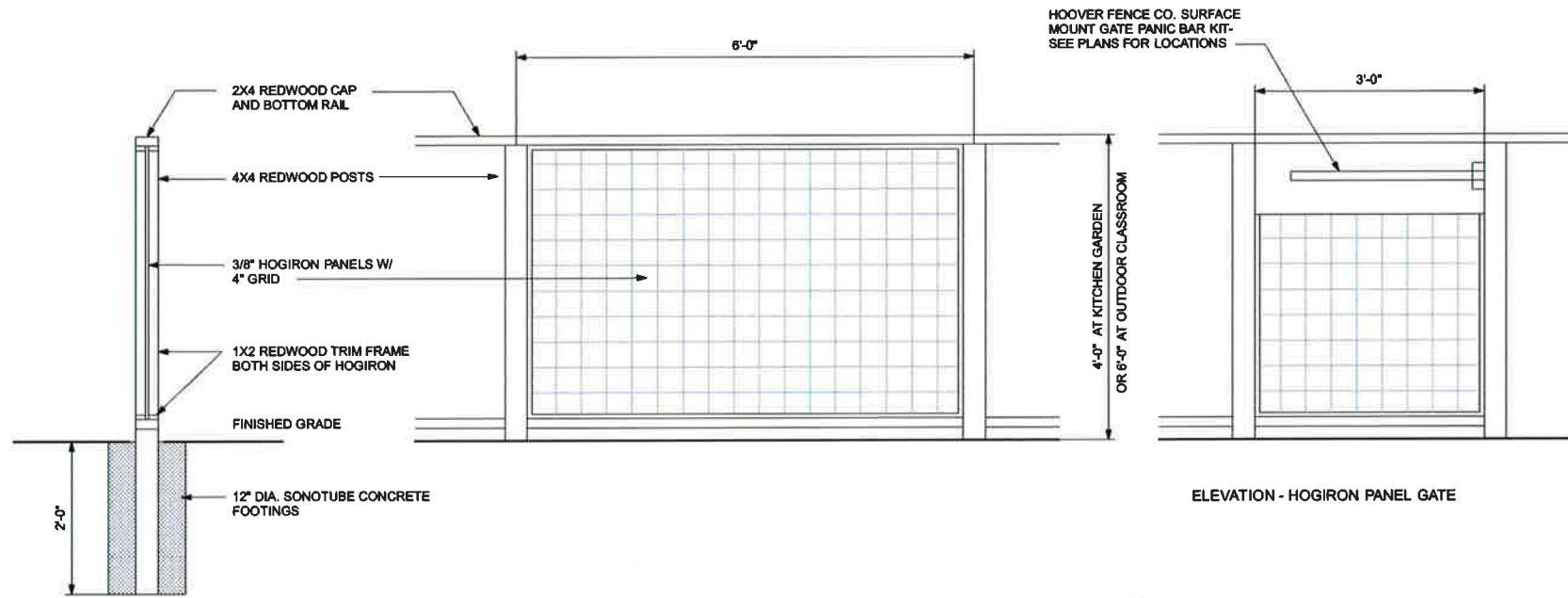
NORTH OAK STREET



111 North River Road
North Aurora, IL 60542
Phone: (800) 323-5854
Fax: (830) 897-0573
sales@belsoln.com

Model # PBSC-8-RD

Dimension Sheet

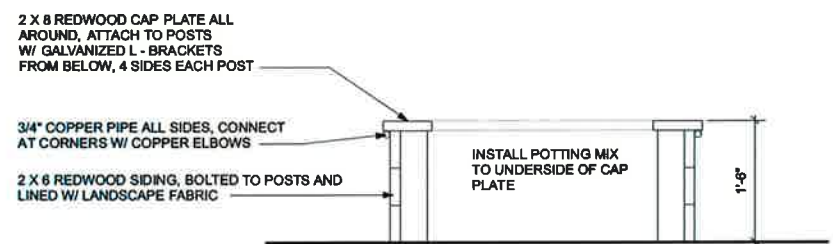
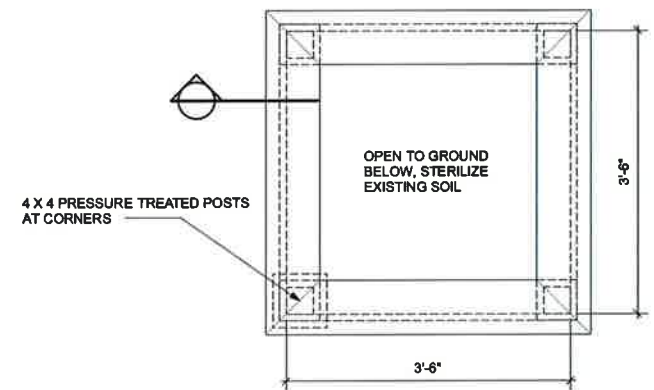


BELSON 'PALISADE' MODEL PBSC-8-RD 8' LONG REDWOOD IN-GROUND MOUNT BENCH W/ BLACK FRAME, NO ARMREST

BENCH DETAIL



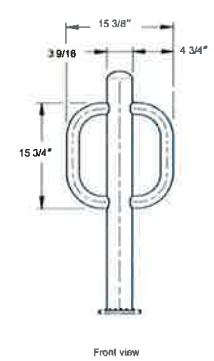
16" ALUMINUM EAGLE FINIAL ON 30' COMMERCIAL FLAGPOLE



SECTION - RAISED BED

Specification Sheet

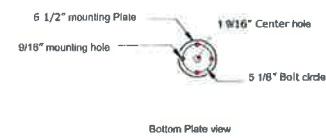
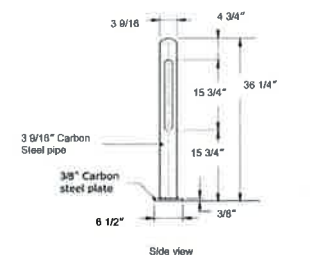
Two Bike Post



Material: Carbon steel
Finish: Powder coating

'BARCO' 2 BIKE POST - BICYCLE RACK

Two Bike Post





PISTACEA CHINESE PISTACHE



CORNUS CLOUD NINE DOGWOOD



LAIURUS (STANDARD) SWEET BAY - TREE FORM



MALUS ESPALIERED APPLE



CITRUS - LEMON AND LIME IN RAISED BEDS



ALUMINUM EAGLE FINIAL ON 30' COMMERCIAL FLAGPOLE



TEUCRIUM PROSTRATE GERMANDER



PENNISSETUM FOUNTAIN GRASS



SALVIA PURPLE DESERT SAGE



ROSA ICEBERG ROSE



ZAUSCHNERIA CALIFORNIA FUCHSIA



WOOD FENCE W/ HOGWIRE PANELS 4' AND 8' HEIGHTS



AGAVE



ARBUTUS MARINA STRAWBERRY TREE



ARCTOSTAPHYLOS SHRUB MANZANITA



NEESSELA MEXICAN FEATHER GRASS



ARCTOSTAPHYLOS MANZANITA GROUNDCOVER



WOOD FENCE W/ HOGWIRE PANELS DETAIL



CALAMAGROSTIS CALIFORNIA FEATHER GRASS



CERATOSTIGMA CHINESE PLUMBAGO



CEANOTHUS CALIFORNIA LILAC



FESTUCA BLUE FESCUE



'BARCO' 2 BIKE POST - BICYCLE RACK



TRASH CAN - OAKLEY M2401FT BRONZE FINISH

LANDSCAPE IMAGE BOARD



FRONT ENTRANCE ON NORTH OAK STREET



CONTEXT Building vs. Landscape

