

**ATTACHMENT 3**

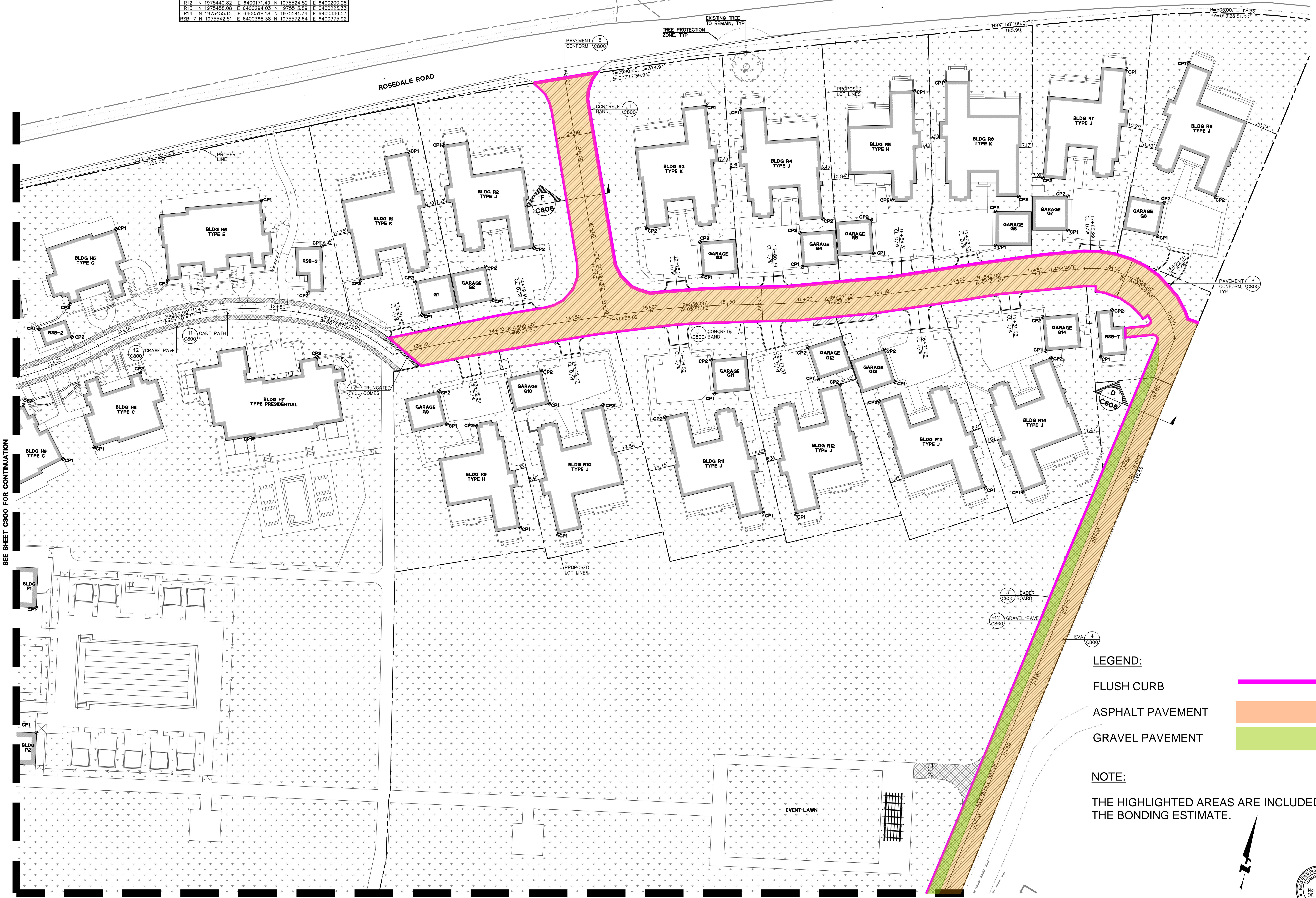
**LEGEND**

- CP# -- CONTROL POINT NUMBER
- BUILDING CORNER
- HOTEL ARRIVAL ROAD
- PARKING LOT, RESIDENCE ROAD
- PARKING LOT
- LANDSCAPE

BUILDING CORNER CONTROL POINT					
BLDG	NORTHING	EASTING	NORTHING	EASTING	CP#
RSB-2	N 1975624.87	E 6399822.91	N 1975555.10	E 6399704.14	
H5	N 1975624.87	E 6399732.51	N 1975555.10	E 6399702.68	
H6	N 1975643.24	E 6399826.37	N 1975591.73	E 6399765.04	
RSB-3	N 1975613.71	E 6399865.70	N 1975583.98	E 6399856.69	
H7	N 1975489.53	E 6399821.44	N 1975521.14	E 6399862.47	
H8	N 1975483.75	E 6399718.48	N 1975532.24	E 6399748.32	
H9	N 1975476.31	E 6399698.38	N 1975511.23	E 6399672.84	
P1	N 1975380.31	E 6399881.13	N 1975413.40	E 6399824.85	
P2	N 1975299.52	E 6399881.38	N 1975281.33	E 6399816.84	

BUILDING CORNER CONTROL POINT					
BLDG	NORTHING	EASTING	NORTHING	EASTING	CP#
R1	N 1975674.67	E 6399921.63	N 1975591.82	E 6399890.48	
R2	N 1975679.00	E 6399944.00	N 1975612.65	E 6400002.58	
R3	N 1975704.81	E 6400113.95	N 1975625.14	E 6400076.39	
R4	N 1975702.23	E 6400135.94	N 1975631.47	E 6400189.10	
R5	N 1975714.19	E 6400248.14	N 1975643.79	E 6400233.71	
R6	N 1975720.27	E 6400287.97	N 1975645.77	E 6400315.75	
R7	N 1975728.12	E 6400385.24	N 1975657.98	E 6400331.25	
R8	N 1975732.22	E 6400425.21	N 1975645.46	E 6400442.75	
R9	N 1975432.05	E 6399943.82	N 1975488.02	E 6399865.14	
R10	N 1975427.79	E 6400017.75	N 1975511.26	E 6400047.23	
R11	N 1975441.68	E 6400150.70	N 1975503.33	E 6400087.18	
R12	N 1975440.82	E 6400171.48	N 1975504.34	E 6400200.28	
R13	N 1975458.08	E 6400294.03	N 1975513.89	E 6400225.33	
R14	N 1975455.15	E 6400318.18	N 1975541.74	E 6400336.33	
RSB-7	N 1975442.51	E 6400368.38	N 1975572.64	E 6400375.82	



**LEGEND:**

- FLUSH CURB
- ASPHALT PAVEMENT
- GRAVEL PAVEMENT

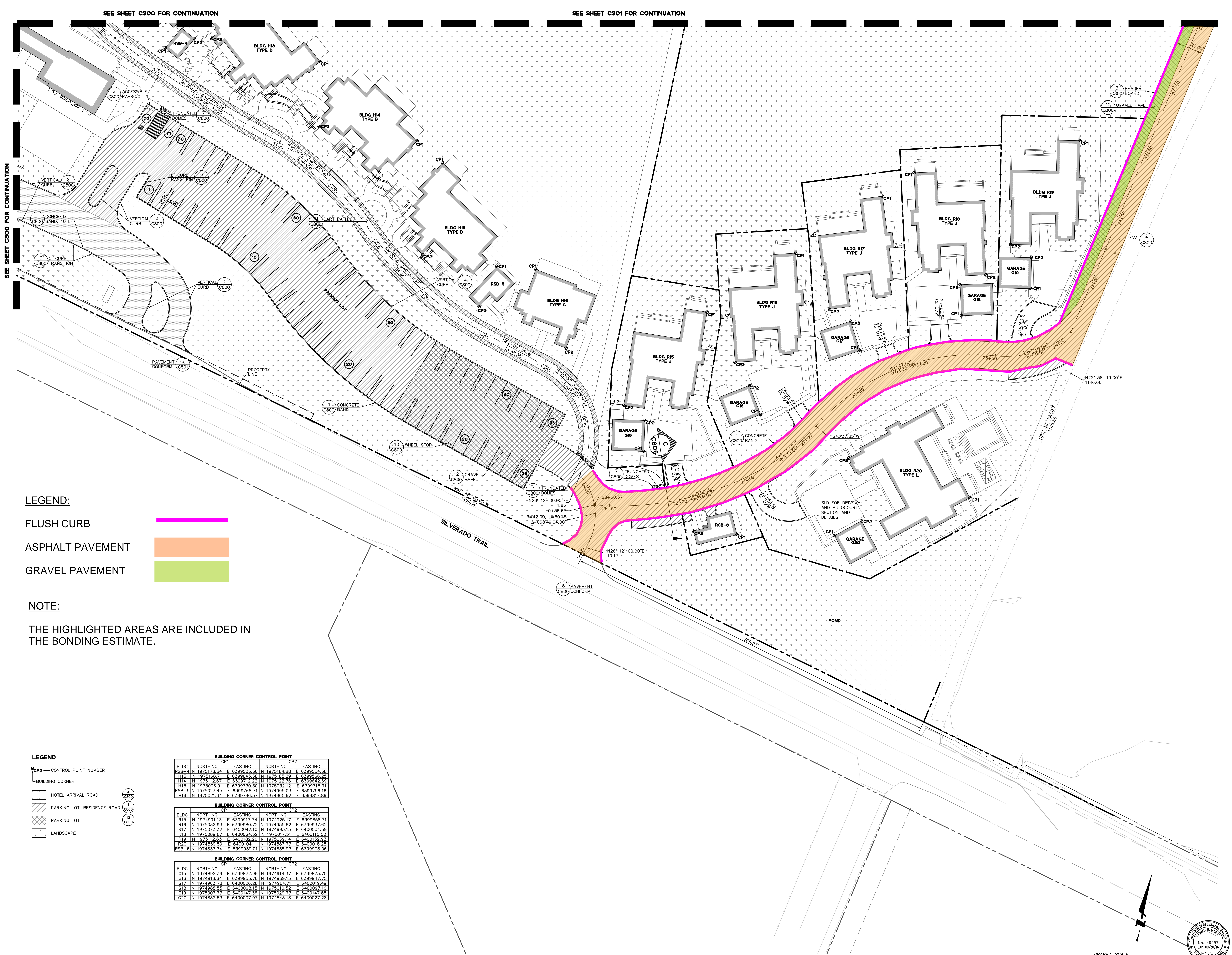
**NOTE:**  
THE HIGHLIGHTED AREAS ARE INCLUDED IN THE BONDING ESTIMATE.



DRAWING NAME: S:\Projects\11\101\00\BMS\CD\Drawings\11-0301-CD\BHC.dwg  
PLOT DATE: 05-10-16  
PLOTTED BY: L.cop

SEE SHEET C300 FOR CONTINUATION

SEE SHEET C302 FOR CONTINUATION



**LEGEND:**

- FLUSH CURB
- ASPHALT PAVEMENT
- GRAVEL PAVEMENT

**NOTE:**  
 THE HIGHLIGHTED AREAS ARE INCLUDED IN THE BONDING ESTIMATE.

**LEGEND**

- CP2 - CONTROL POINT NUMBER
- BUILDING CORNER
- HOTEL ARRIVAL ROAD
- PARKING LOT, RESIDENCE ROAD
- PARKING LOT
- LANDSCAPE

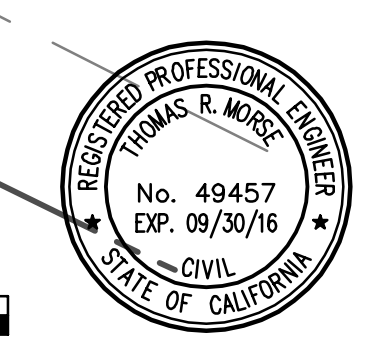
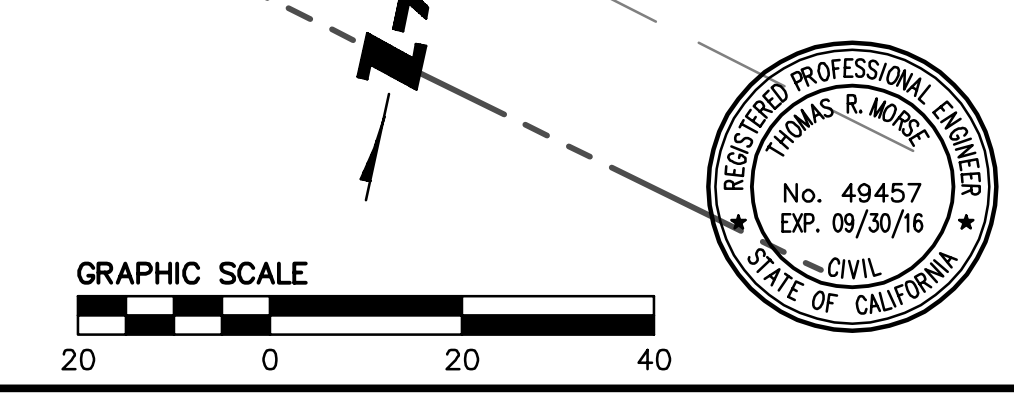
BUILDING CORNER CONTROL POINT					
BLDG	NORTHING	EASTING	NORTHING	EASTING	
RSB-4	N 1975178.34	E 6399533.36	N 1975184.88	E 6399534.38	
H13	N 1975168.71	E 6399643.38	N 1975185.29	E 6399566.25	
H14	N 1975112.87	E 6399712.22	N 1975122.76	E 6399642.69	
H15	N 1975096.91	E 6399730.50	N 1975032.12	E 6399715.91	
RSB-5	N 1975023.45	E 6399788.71	N 1974995.03	E 6399756.16	
H16	N 1975021.34	E 6399796.37	N 1974965.62	E 6399817.69	

BUILDING CORNER CONTROL POINT					
BLDG	NORTHING	EASTING	NORTHING	EASTING	
R15	N 1974891.13	E 6399917.74	N 1974925.17	E 6399858.71	
R16	N 1975032.93	E 6399900.72	N 1974956.82	E 6399937.92	
R17	N 1975073.32	E 6400042.10	N 1974983.15	E 6400004.59	
R18	N 1975089.87	E 6400064.52	N 1975017.51	E 6400115.50	
R19	N 1975112.63	E 6400182.26	N 1975039.14	E 6400132.93	
R20	N 1974859.59	E 6400104.11	N 1974887.73	E 6400018.28	
RSB-6	N 1974833.34	E 6399939.01	N 1974835.93	E 6399908.08	

BUILDING CORNER CONTROL POINT					
BLDG	NORTHING	EASTING	NORTHING	EASTING	
G15	N 1974892.39	E 6399872.36	N 1974914.37	E 6399873.75	
G16	N 1974918.64	E 6399955.78	N 1974939.13	E 6399967.95	
G17	N 1974963.78	E 6400026.28	N 1974984.71	E 6400019.49	
G18	N 1974988.55	E 6400098.15	N 1975010.52	E 6400097.16	
G19	N 1975007.77	E 6400147.36	N 1975029.77	E 6400147.65	
G20	N 1974832.63	E 6400007.97	N 1974843.18	E 6400027.28	

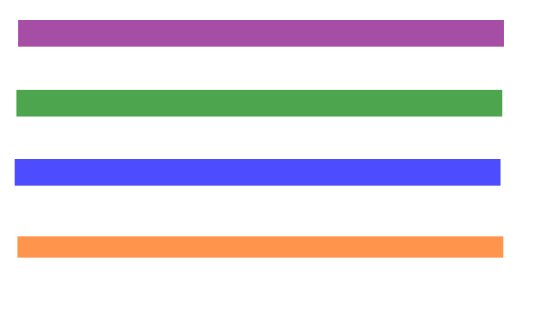


DRAWING NAME: S:\Projects\11\10\00\BMS\CD\04\CD\0302-CAD\HC.dwg  
 PLOT DATE: 05-10-18 PLOTTED BY: l.cop

UTILITIES DATA		
LOT #	WATER METER STA./OFF.	SANITARY SEWER CLEANOUT STA./OFF.
1	13+52.94 (14.00 RT)	13+48.97 (13.24 LT)
2	14+03.01 (14.00 RT)	14+07.01 (13.12 LT)
3	15+31.93 (14.00 RT)	15+28.06 (13.22 LT)
4	15+97.88 (14.00 RT)	15+93.82 (13.12 LT)
5	16+49.44 (14.00 RT)	16+45.47 (13.12 LT)
6	17+24.03 (13.98 LT)	17+19.95 (13.11 LT)
7	17+74.50 (13.99 LT)	17+78.51 (13.88 LT)
8	18+17.77 (13.99 LT)	18+14.45 (13.12 LT)
9	13+57.17 (14.00 RT)	13+61.19 (13.14 RT)
10	14+25.26 (13.99 RT)	14+29.25 (13.12 RT)
11	15+34.57 (14.00 RT)	15+38.50 (13.12 RT)
12	15+92.55 (14.00 RT)	15+88.51 (13.13 RT)
13	16+46.36 (14.00 RT)	16+50.34 (13.12 RT)
14	17+49.89 (14.01 RT)	17+45.83 (13.12 RT)

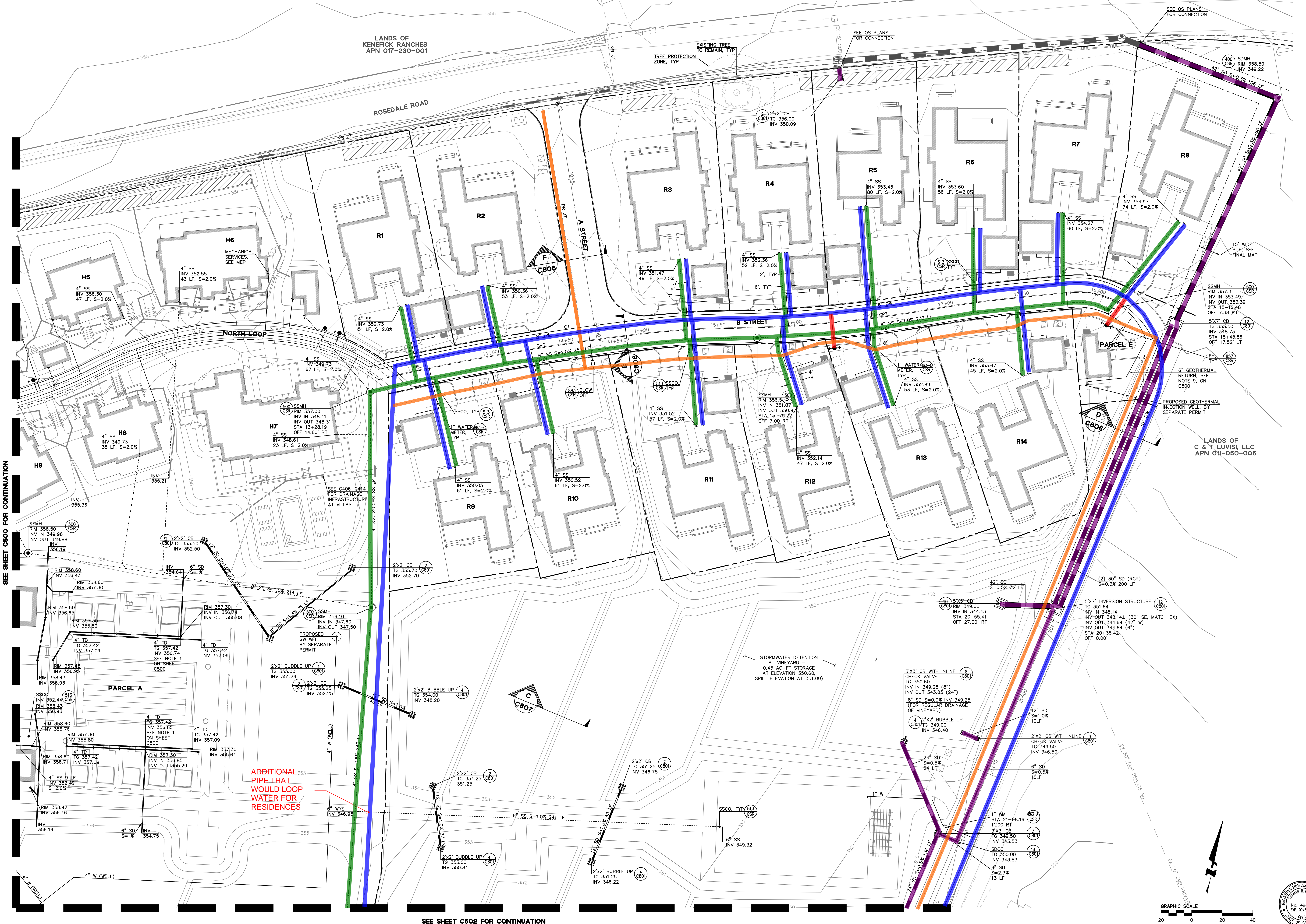
**LEGEND:**

STORMDRAIN  
SANITARY SEWER  
DOMESTIC WATER  
JOINT TRENCH



**NOTE:**

THE HIGHLIGHTED AREAS ARE INCLUDED IN THE BONDING ESTIMATE.

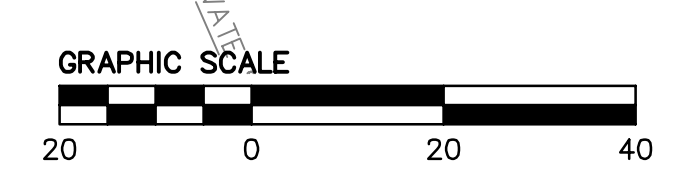


SEE SHEET C500 FOR CONTINUATION

SEE SHEET C502 FOR CONTINUATION

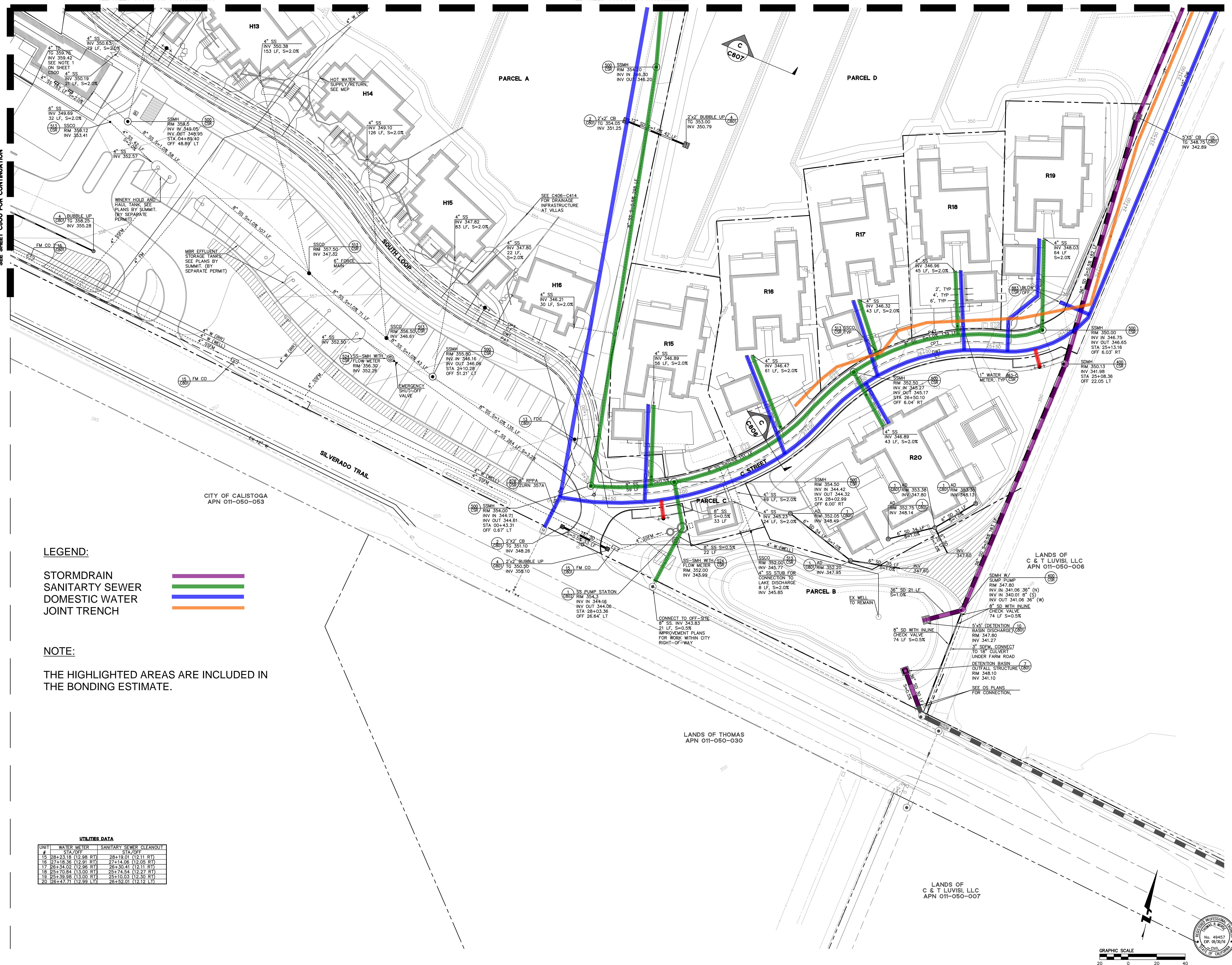
ADDITIONAL PIPE THAT WOULD LOOP WATER FOR RESIDENCES

DATE: 05/11/10  
SCALE: AS SHOWN  
DRAWN BY: L.C.M.  
CHECKED BY: L.C.M.



SEE SHEET C500 FOR CONTINUATION

SEE SHEET C501 FOR CONTINUATION



**LEGEND:**

- STORMDRAIN
- SANITARY SEWER
- DOMESTIC WATER
- JOINT TRENCH

**NOTE:**

THE HIGHLIGHTED AREAS ARE INCLUDED IN THE BONDING ESTIMATE.

**UTILITIES DATA**

UNIT #	WATER METER STA/OFF	SANITARY SEWER CLEANOUT STA/OFF
15	28+23.18 (12.98 RT)	28+10.01 (12.11 RT)
16	27+18.36 (12.91 RT)	27+14.06 (12.05 RT)
17	26+34.02 (12.96 RT)	26+30.41 (12.11 RT)
18	25+70.84 (13.00 RT)	25+74.54 (12.27 RT)
19	25+39.98 (13.00 RT)	25+10.03 (12.30 RT)
20	26+47.71 (12.99 LT)	26+52.01 (12.12 LT)

DRAWING NAME: S:\Projects\110100\BMS\CD\03\CD\03-C502-CAD\UTIL.dwg  
PLOT DATE: 05-10-18  
PLOTTED BY: L.C.M.

