

**BERRY STREET BRIDGE REPLACEMENT PROJECT**  
CITY OF CALISTOGA



November 10, 2016  
Prepared by: Mark Thomas & Co. Inc.

**PEDESTRIAN BRIDGE RENTAL COSTS**

ITEM #	ITEM DESCRIPTION	UNIT	QTY	Unit Price	Cost
1	Truss rental (6 months)	LS	1	\$31,850	\$31,850
2	Truss rental additional (per month)	EA	2	\$2,540	\$5,080
3	2x8x12' timber deck support	EA	140	\$12	\$1,680
4	3/4" plywood	EA	37	\$30	\$1,110
5	deck installation	LS	1	\$2,000	\$2,000
6	deck installation connectors	LS	1	\$300	\$300
7	Shipping back to supplier	EA	1	\$1,800	\$1,800
8					
9					
10					
11					

<b>SUBTOTAL</b>	<b>\$43,820</b>
<b>CONTINGENCY (10%)</b>	<b>\$4,382</b>
<b>TOTAL</b>	<b>\$48,202</b>

# QUOTE TRANSMITTAL

To:	Mike Bianucci, P.E.	Date:	11/4/2016
Fax/Email:	<a href="mailto:mbianucci@markthomas.com">mbianucci@markthomas.com</a>	Pages:	4 (plus drawings)
Company:	Mark Thomas & Company	From:	Jack Arizcuren
Re:	City of Calistoga - Temporary Ped Bridge	Email:	<a href="mailto:jariz@acrow.com">jariz@acrow.com</a>

**QUOTATION # 16-2103-0525**

**Acrow Temporary Pedestrian Bridge Rental**

**Detail:** To the rental of the components required to construct Twin 100 foot long 700XS® Acrow® Temporary Pedestrian Bridge. The walkway width is 5 feet – 0 inches. The design load is AASHTO standard pedestrian loading of 90 PSF & 200 PLF Utility loading. The bridge segments come in 10 ft lengths, and the clear span (100 ft) with multiple option provided below. This bridge style uses a wood deck and should have a non-skid painted surface (wood and paint by others). The steel superstructure, utility bracket, and bearings are included. Engineering CA PE Stamped submittals and freight to the job site are also included.

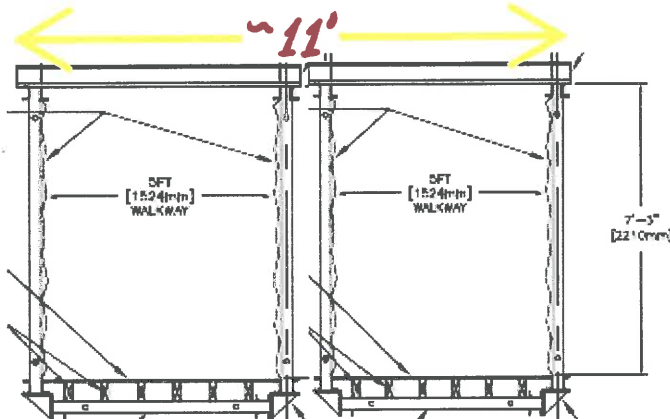
**ITEM ONE: Two 100' x 5' clearspans :**

**FOR THE SUM OF (6 months rental).....\$ 23,120.00**

**EACH MONTH THEREAFTER .....\$ 2,520.00**

Excluded:

- Assembly & Installation
- Abutments engineering and Abutments
- Timber Joists & Plywood Decking
- Fencing & Handrail
- Anchor bolts and retention angles
- Lighting or Signage if required
- Return Freight to Centralia, WA (Estimated 2 trucks @ \$1800/ ea.)



Each 5' width bridge weighs – 16.8 tons  
Total aggregate weight of 33.6 tons

**Building Bridges. Connecting people. ®**

**ALTERNATE ITEM: APB 100' x 10'4" clearspan:**

**FOR THE SUM OF (6 months rental).....\$ 31,850.00**

**EACH MONTH THEREAFTER .....\$ 2,540.00**

**By Others:**

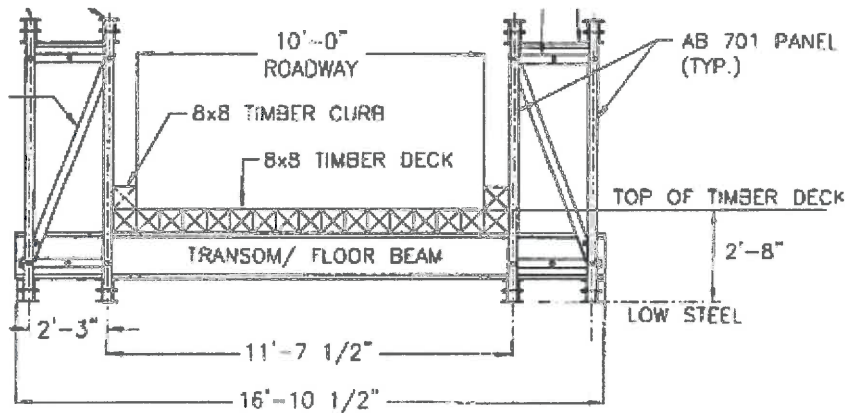
- Assembly & Installation
- Abutment Engineering & Foundation Material
- Timber Joists & Plywood Decking
- Anchor bolts & retention angles
- Lighting, Signage, and Boltster
- Truck Off-loading



Return freight after completion of the job to Centralia, WA 98531 (1 trucks @ approx \$1800 ea)

**Bridge Weight:**

Approx 20 tons without Deck (launch frame weight)



Different & Lighter timber decking system, but same Transom/ Floor Beam. Same out-to-out. From Deck surface to top chord is to be ~5.75'

**Building Bridges. Connecting people. ®**

**General Notes:**

1. Superstructure drawings and calculations signed and sealed by a CA P.E. are included. Seismic considered is not included in the standard calculations. Pricing subject to increase if additional seismic information is required/ provided after this estimate.
2. Price is FOB Acrow warehouse in Centralia, WA freight prepaid to project site in Chehalis, WA or closest accessible location by an over the road truck; return freight is **excluded**. The bridge is to be delivered on approximately 2 trucks
3. Technical assistance for 2 days during assembly and erection is included. Additional technical assistance is available at \$ 850.00/day plus expenses.
4. Rental of launching and de-launching equipment is **excluded**.
5. State and local taxes, if applicable, are **excluded**.
6. Erection of the bridge should take approximately 2 days with a 4 man ironworker crew plus a foreman and an operator with crane. Erection times are offered as a guide only since job site conditions vary.
7. A 25% deposit is required to begin engineering submittals. A signed copy of our equipment lease, an insurance certificate, per our lease agreement and balance of initial rent is required before shipment of the components. Additional monthly rental monies will be due on the first of the month and will be invoiced accordingly. For purchase, after initial deposit, balance Net 30. Retainage is not acceptable.
8. Prices valid for 30 days from date of quote. This order is subject to availability of materials at time of order.
9. ***Acrow Bridges are fabricated in Pennsylvania, USA under quality assurance programs certified by ISO 9001 and the American Institute of Steel Construction (AISC) to have the personnel, organization, experience, capability, and commitment meeting the requirements of the Advanced (Major) Steel Bridges with Fracture Critical Endorsement categories as set forth in the AISC Certification Program. Acrow Bridges carry the European CE quality assurance mark certifying that all components conform with the applicable European Economic Region standards for safety, health, and environmental protections.***



**Building Bridges. Connecting people. ®**

Page 3 of 4

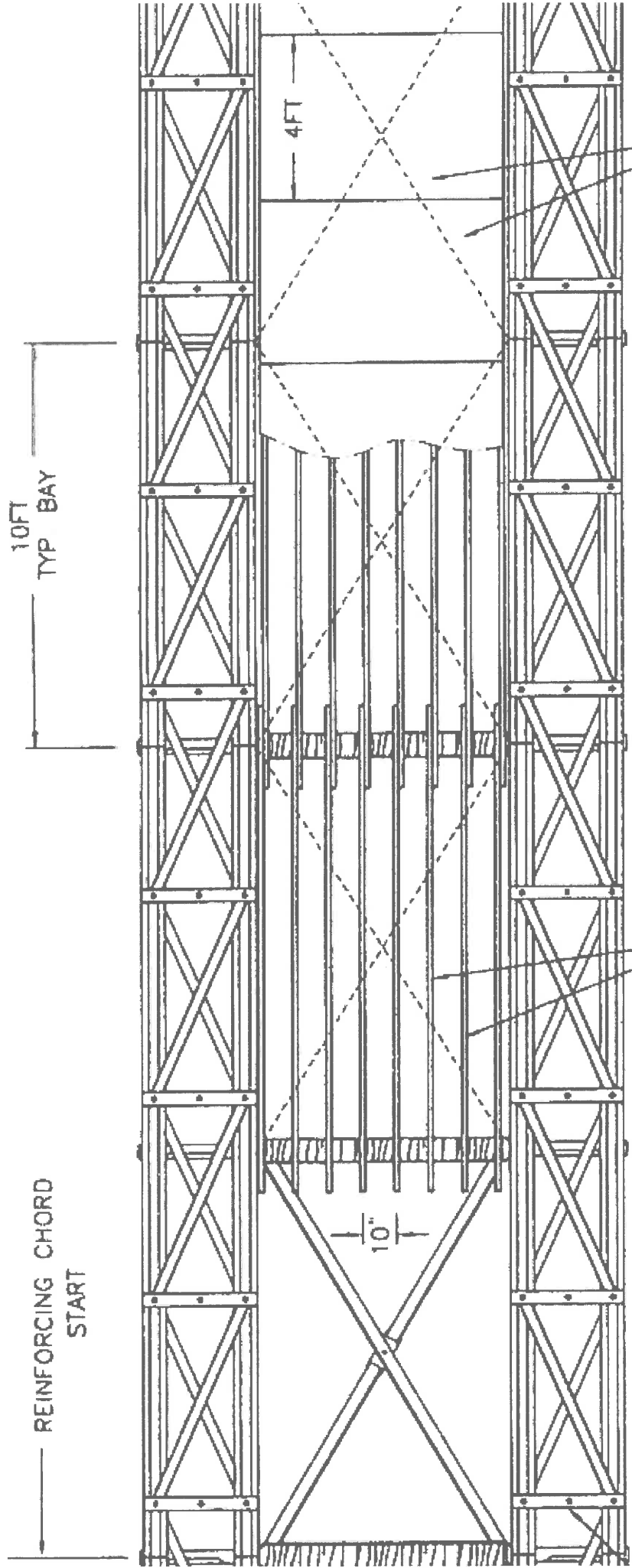
## TERMS AND CONDITIONS:

1. Quotation is valid for 30 days from date of quotation. However, Acrow reserves the right to make escalation or de-escalation adjustments to the price based on notification from steel suppliers.
2. Acrow requires six weeks advance delivery notification in writing. Any delivery date estimate is subject to receipt of deposit funds, pre-shipment payment amounts, approval of engineering drawings, and receipt of insurance certificate and executed lease agreement in the case of rentals. 1-½ hours unloading time has been allowed per truck. Any additional unloading time will be billed at \$150.00 per hour.
3. Quotations are subject to availability of equipment on a "first come, first priority" basis. Payment of agreed deposit funds will reserve bridge components for a project if the items are in stock or Acrow will confirm delivery dates for all required new parts.
4. Acrow will only initiate engineering drawings and calculations upon receipt of agreed order documents and advance deposit monies in accordance with the General Notes.
5. State and local sales taxes are excluded and, if applicable, will be added to the total price and collected.
6. The use of tools and machines for assembly and erection along with grinders, reamers, welding and burning equipment are considered standard equipment that may be used for the assembly and erection of the bridge. The planning and cost of these items is the responsibility of the installer.
7. Acrow's quotation includes a technical advisor as noted in the general notes for each bridge. Additional days shall be invoiced at \$850/day plus expenses. Acrow requires three weeks advanced notice in writing for an onsite technical advisor. The technical advisor's responsibility is strictly limited to advising the installer as to standard assembly techniques of the bridge parts. Non-standard or unusual job site conditions may cause longer erection hours and actual installation time may vary considerably by the personnel and equipment capabilities of the installer, as well as, job site conditions. Acrow makes no express or implied warranty regarding installation time estimates; therefore, labor and equipment costs estimates are solely the responsibility of the installer.
8. All sales orders are subject to satisfactory payment schedule including deposit funds and credit approval. Extended credit amounts for equipment sales or engineering services are due in full 30 days from invoice date. Balances not paid in accordance with the stated terms will be subject to a 1.5% monthly interest charge. Continuing rental period payments are due in full on the first day of the rental period. Deposit amounts, Initial Term/Minimum rental amounts are due upon receipt of invoice. Acrow is acting as a supplier and not a contractor or subcontractor. Acrow will not accept retainage holdbacks.
9. Any delay of equipment delivery requested by the purchaser will subject the order price to escalation adjustments and storage charges. Purchaser agrees to pay 100% of the order price for delays more than 60 days or Acrow reserves the right to use the equipment for other orders.
10. All substructure designs and construction are the sole responsibility of the installer.
11. Cancelled orders will be subject to 15% fee for standard components. Non-standard components will be billed at full price.



**Building Bridges. Connecting people. ®**

Page 4 of 4



2x8 TIMBER STRINGERS  
 NAILED TO 2x6

513 RAKER BRACE  
 AB549A BOLTS

174'-6 1/4"