

THIS DOCUMENT AND THE IDEAS INCORPORATED HEREIN, AS AN INSTRUMENT OF PROFESSIONAL SERVICE IS THE PROPERTY OF VERANZO AND IS NOT TO BE USED, IN WHOLE OR IN PART FOR ANY PROJECT WITHOUT THE PRIOR WRITTEN AUTHORIZATION OF VERANZO.

CONSULTANT



PHILIP S. VERA CRUZ

PROJECT



TENANT IMPROVEMENT
 504 WASHINGTON STREET
 CALISTOGA , CA 94515
 APN.011.260.001

REVISION DATE

SHEET CONTENTS

GENERAL NOTES
 PROJECT INFORMATION
 VICINITY MAP

SCALE 1/4"=1'-0"

DATE 07.13.21

DRAWN BY BMV

CHECKED BY

JOB NO. 21-023

SHEET NO.

A1.0

MARK MICHIKO

504 WASHINGTON STREET TENANT IMPROVEMENTS CALISTOGA , CALIFORNIA 94515 APN# 011-260-001

GENERAL NOTES:

1. SCOPE OF WORK:

THE PROPOSED CONSTRUCTION INCLUDES:

- (A) . DEMOLITION OF THE (E) OFFICE WALL & CEILING
- (B) . INSTALL A (N) FIRE RATED WALL
- (C) . COVER THE ENTIRE CEILING & ALL EXPOSED WOOD WITH FIRE RATED TYPE X GYPSUM BOARD
- (D) . RELOCATE (E) ELECTRICAL PANEL, LIGHT FIXTURES, SWITCHES & CONVENIENCE OUTLETS.

2. APPLICABLE CODES:

CALIFORNIA BUILDING CODE 2019 EDITION
 CALIFORNIA PLUMBING CODE 2019 EDITION
 CALIFORNIA MECHANICAL CODE 2019 EDITION
 CALIFORNIA ELECTRICAL CODE 2019 EDITION
 CALIFORNIA FIRE CODE 2019 EDITION
 CALIFORNIA GREEN BUILDING STANDARDS CODE 2019 EDITION

3. "AS-BUILT" CONDITIONS:

THE "AS-BUILT" CONDITIONS DEPICTED ON THE DRAWINGS REPRESENT THE BEST KNOWLEDGE OF THE ENGINEER PRIOR TO THE COMMENCEMENT OF WORK. DISCREPANCIES DISCOVERED BY THE CONTRACTOR DURING THE COURSE OF CONSTRUCTION SHALL BE BROUGHT TO THE ENGINEER'S ATTENTION.

4. DIMENSIONS:

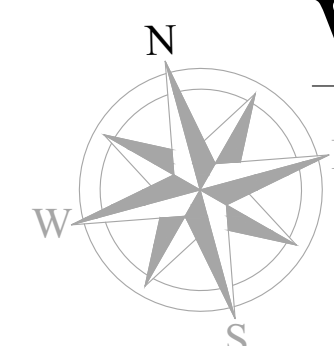
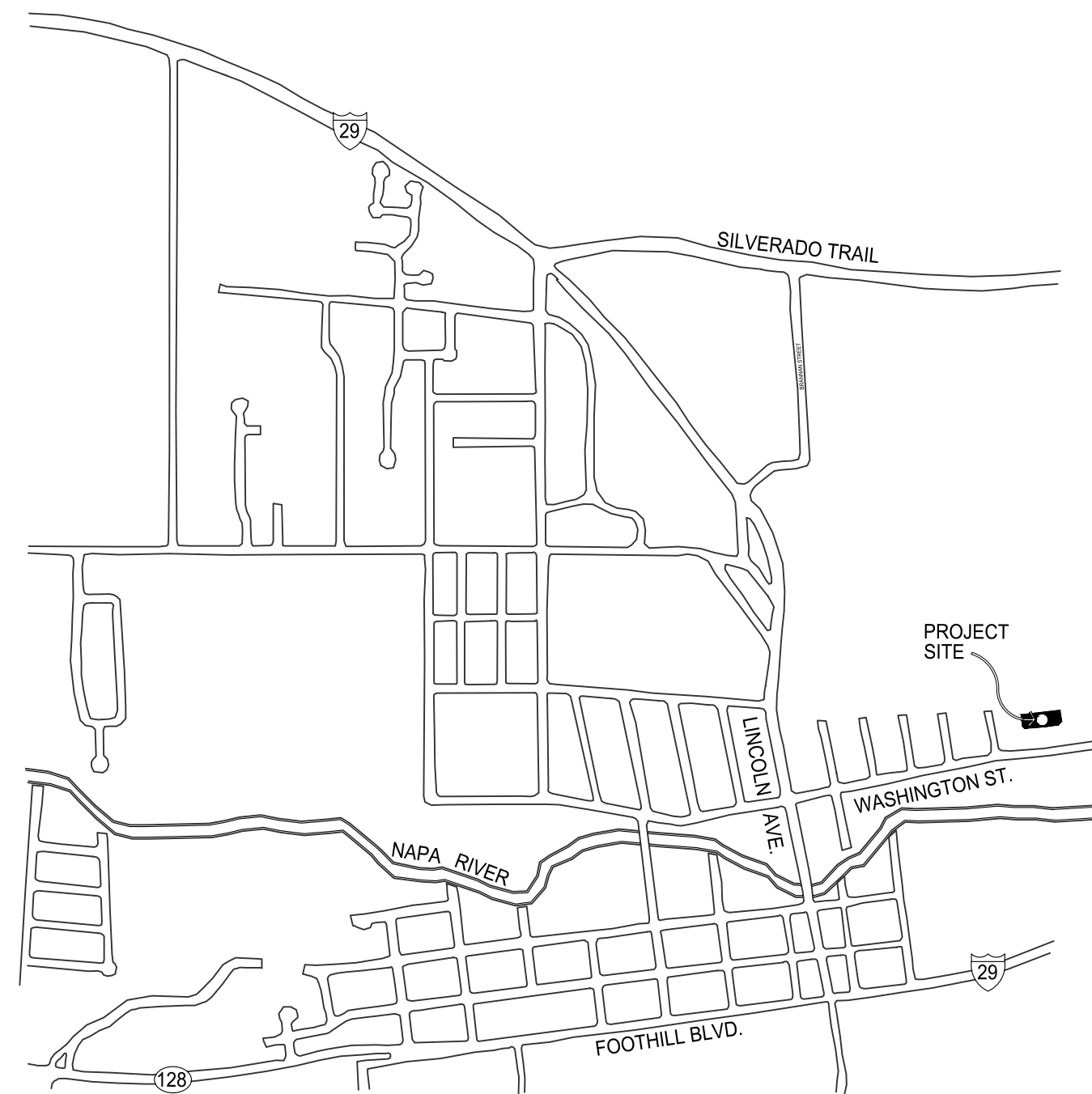
DO NOT SCALE DIMENSIONS FROM DRAWINGS. ANY QUESTIONS OR DISCREPANCIES REGARDING DIMENSIONS SHALL BE REFERRED TO THE ENGINEER. UNLESS NOTED OTHERWISE, ALL DIMENSIONS ARE TAKEN TO FACE OF STUDS.

5. CALGREEN:

THIS PROJECT SHALL MEET THE STANDARD CALGREEN MANDATORY MEASURES.

6. CONTRACTOR RESPONSIBILITY:

IN ACCORDANCE WITH GENERALLY ACCEPTED CONSTRUCTION PRACTICES, CONTRACTOR AGREES TO ASSUME SOLE RESPONSIBILITY FOR JOB SITE CONDITIONS DURING THE COURSE OF CONSTRUCTION OF THE PROJECT, INCLUDING BUT NOT LIMITED TO THE SAFETY OF ALL PERSONS INVOLVED WITH THE PROJECT. FURTHER, THE CONSTRUCTION CONTRACTOR AGREES TO INDEMNIFY AND HOLD THE ENGINEER HARMLESS FROM ANY AND ALL LIABILITY, REAL OR ALLEGED IN CONNECTION WITH THE PERFORMANCE OF WORK ON THE PROJECT EXCEPT FOR LIABILITY ARISING FROM THE SOLE NEGLIGENCE OF THE ENGINEER.



VICINITY MAP

NOT TO SCALE

PROJECT INFORMATION

ZONING: DC-DD
 OCCUPANCY CLASSIFICATION : GROUP B
 CONSTRUCTION TYPE: V-B WOOD FRAME
 STORIES 1

(N) AREA OF REMODEL: 2,850 SQUARE FEET

PROJECT DIRECTORY

PROPERTY ADDRESS
 504 WASHINGTON STREET
 CALISTOGA , CALIFORNIA

OWNER
 MARK & MICHIKO WEINER
 (508) 473 - 0675
 markandmichiko.com

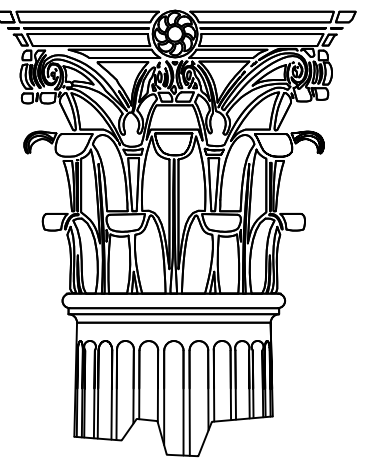
ENGINEER
 Philip Vera Cruz
 (707) 661 - 9229
 bmverzosa@gmail.com

GENERAL CONTRACTOR
 BILL NANCE & COMPANY
 1216 Lincoln Avenue, Calistoga, CA
 707.310.0699

ELECTRICAL CONTRACTOR
 CALISTOGA SOLUTIONS ELECTRIC
 FRED VOGEL
 707.888.5740
 fredvogel@aol.com

INDEX OF DRAWINGS

- A1.0 COVER SHEET
- A2.0 PROPOSED & DEMOLITION PLAN
- A3.0 REFLECTED CEILING PLAN
- A4.0 EQUIPMENT PLAN
- A5.0 ELEVATIONS & SECTIONS
- A6.0 DETAILS
- E1.0 ELECTRICAL & LIGHTING PLAN
- E2.0 SINGLE LINE ELECTRICAL DIAGRAM
- CG1 CALGREEN MANDATORY MEASURES



THIS DOCUMENT AND THE IDEAS INCORPORATED HEREIN, AS AN INSTRUMENT OF PROFESSIONAL SERVICE IS THE PROPERTY OF VERANZO AND IS NOT TO BE USED, IN WHOLE OR IN PART FOR ANY PROJECT WITHOUT THE PRIOR WRITTEN AUTHORIZATION OF VERANZO.

CONSULTANT



PHILIP S. VERA CRUZ

PROJECT



TENANT IMPROVEMENT
 504 WASHINGTON STREET
 CALISTOGA, CA 94515
 APN.011.260.001

REVISION DATE

SHEET CONTENTS

PROPOSED & DEMO
 FLOOR PLAN

SCALE 1/4" = 1'-0"

DATE 07.13.21

DRAWN BY BMV

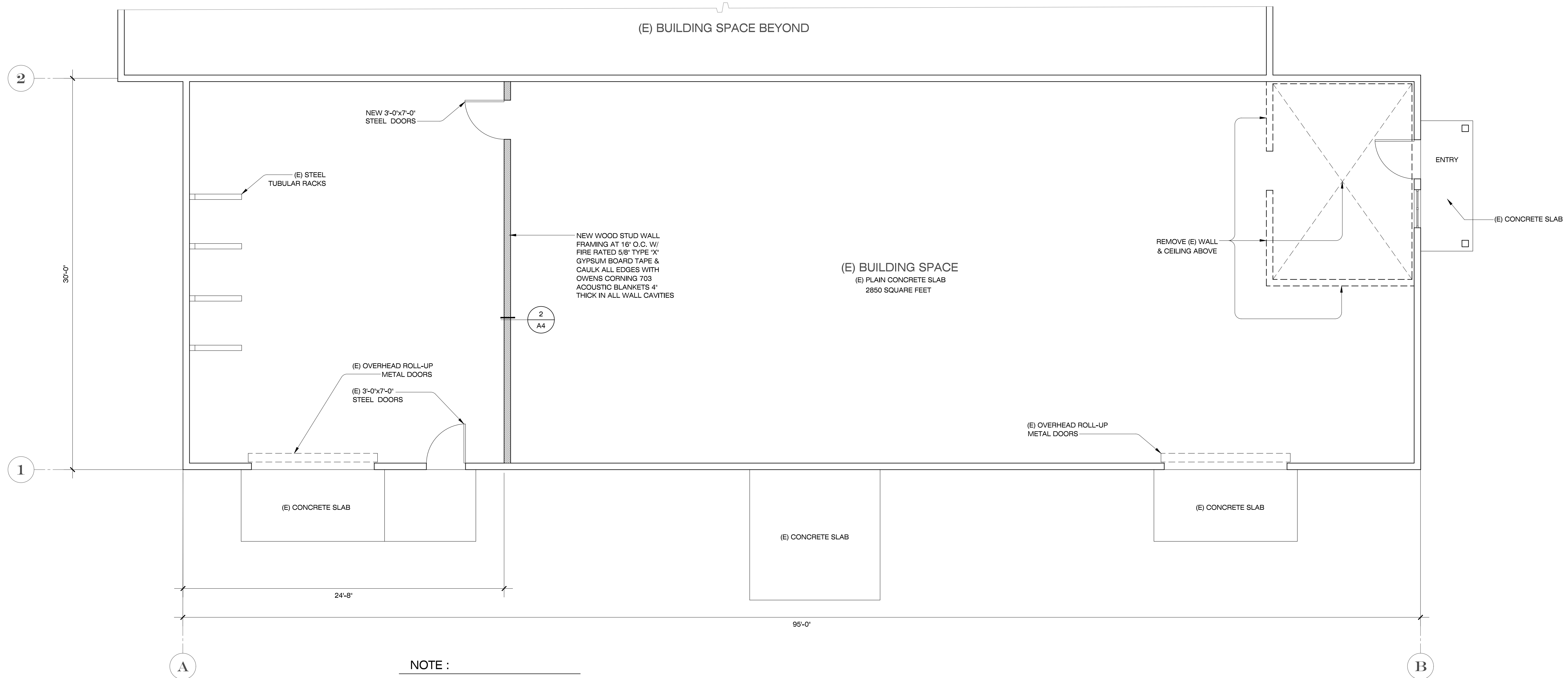
CHECKED BY

JOB NO. 21-023

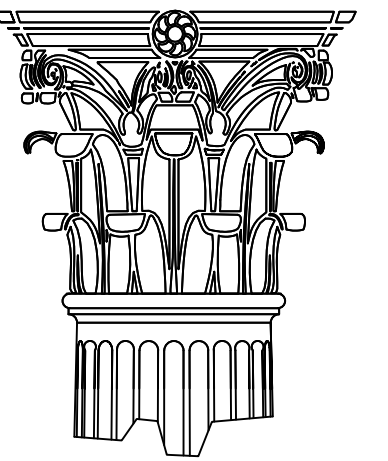
SHEET NO.

A2.0

CONSTRUCTION DOCUMENTS SUBMITTAL 8.26.21



1 PROPOSED & DEMO FLOOR PLAN
 SCALE 1/4" = 1'-0"



THIS DOCUMENT AND THE IDEAS INCORPORATED HEREIN, AS AN INSTRUMENT OF PROFESSIONAL SERVICE IS THE PROPERTY OF VERANZO AND IS NOT TO BE USED, IN WHOLE OR IN PART FOR ANY PROJECT WITHOUT THE PRIOR WRITTEN AUTHORIZATION OF VERANZO.

CONSULTANT



PHILIP S. VERA CRUZ

PROJECT



TENANT IMPROVEMENT
 504 WASHINGTON STREET
 CALISTOGA, CA 94515
 APN.011.260.001

REVISION DATE

SHEET CONTENTS

REFLECTED CEILING PLAN

SCALE 1/4" = 1'-0"

DATE 07.13.21

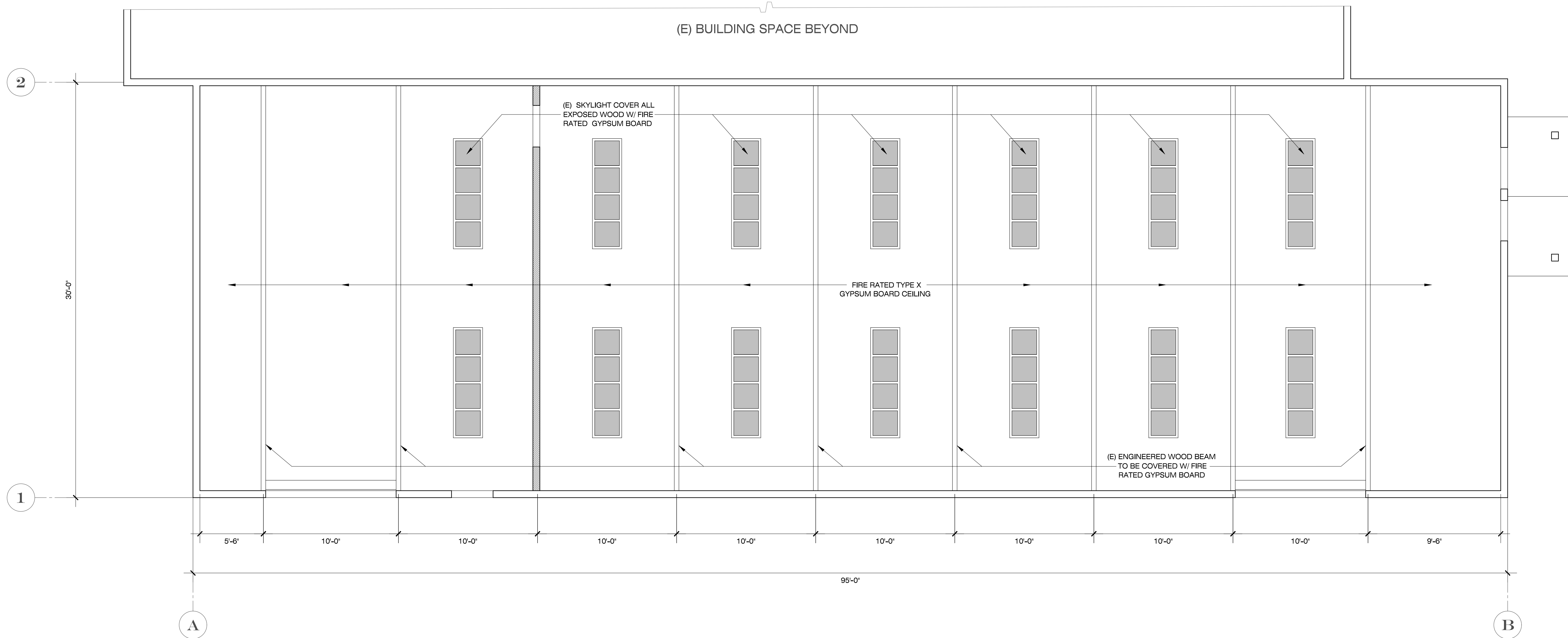
DRAWN BY BMV

CHECKED BY

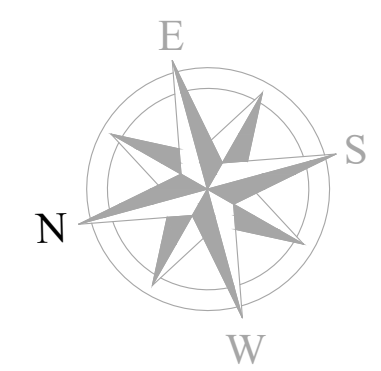
JOB NO. 21-023

SHEET NO.

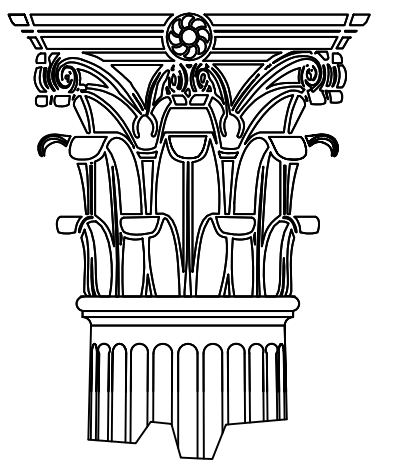
A3.0



1 REFLECTED CEILING PLAN
 SCALE 1/4" = 1'-0"



CONSTRUCTION DOCUMENTS SUBMITTAL 8.26.21



THIS DOCUMENT AND THE IDEAS INCORPORATED HEREIN, AS AN INSTRUMENT OF PROFESSIONAL SERVICE IS THE PROPERTY OF VERANZO AND IS NOT TO BE USED, IN WHOLE OR IN PART FOR ANY PROJECT WITHOUT THE PRIOR WRITTEN AUTHORIZATION OF VERANZO.

CONSULTANT



PHILIP S. VERA CRUZ

PROJECT



TENANT IMPROVEMENT
504 WASHINGTON STREET
CALISTOGA, CA 94515
APN.011.260.001

REVISION DATE

SHEET CONTENTS

EQUIPMENT PLAN
& SCHEDULE

SCALE 1/4"=1'-0"

DATE 07.13.21

DRAWN BY BMV

CHECKED BY

JOB NO. 21-023

SHEET NO.

A4.0

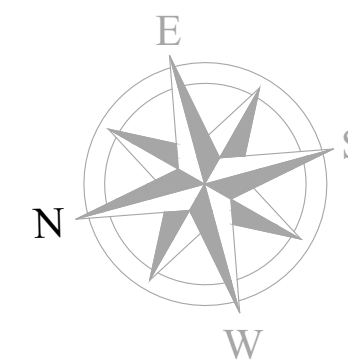
CONSTRUCTION DOCUMENTS SUBMITTAL 8.2.26.21

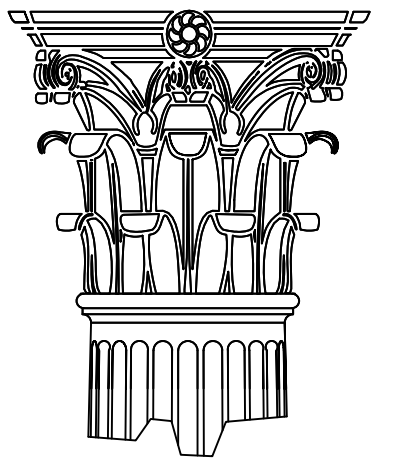


1 EQUIPMENT PLAN
SCALE 1/4"=1'-0"

EQUIPMENT SCHEDULE & LEGEND

NUMBER / KEY	NUMBER / KEY	POWER RATING HP / WATTAGE	PHASE 1Ø OR 3Ø	AMPERES	VOLTAGE	ZONE LOCATION	ELECTRIC OR GAS (E OR G)	MOTOR / FAN / ELEMENTS	DIMENSIONS	REMARKS
1	FURNACE		1	8 FLA	120 VAC	A	E + G	FAN	61"W x 68"D x 72"H	
2	SMALL GLORY HOLE		1	5.5 FLA	120 VAC	A	E + G	FAN	37"W x 46"D x 47"H	
3	MEDIUM GLORY HOLE		1	5.5 FLA	120 VAC	A	E + G	FAN	39"W x 47"D x 56"H	NOT RUNNING MEDIUM AND LARGE TOGETHER
4	LARGE GLORY HOLE		1	10 FLA	120 VAC	A	E + G	FAN	44"W x 57"D x 59"H	NOT RUNNING MEDIUM AND LARGE TOGETHER
5	PIPE WARMER		1	5.5 FLA	120 VAC	A	E + G	FAN	45"W x 32"D	
6	WALL EXHAUST FAN	1/2 HP	3		240 / 460	A	E	FAN		
7	ANNEALER (BOTTOM)	17 KW INPUT	3	48 FLA	208	B	E	HEATING ELEMENTS	75"W x 45"D x 90"H	DOUBLE STACK
8	ANNEALER (TOP)	17 KW INPUT	3	48 FLA	208	B	E	HEATING ELEMENTS		
9	COLOR BOX		1	15 AMP	208 / 240	C	E	HEATING ELEMENTS	36"W x 48"D	
10	SMALL ANNEALER	9,500 WATTS	3	24 AMP	208	C	E	HEATING ELEMENTS	53"W x 50"D x 68"H	
11	FLAT MILL	2 HP	3	5.1 FLA	230	C	E	MOTOR	36"W x 36"D	3Ø MOTOR WITH 1Ø CONVERTER
12	POLISHING LATHE	2 HP	3	5.1 FLA	230	C	E	MOTOR	61"W x 24"D	3Ø MOTOR WITH 1Ø CONVERTER
13	CUTTING LATHE	1 HP	1	5 AMP	180	C	E	MOTOR	57"W x 24"D	MOBILE
14	DRILL PRESS	1 HP	1	10 AMP	110	C	E	MOTOR	29"W x 41"D	MOBILE
15	BAND SAW	1/2 HP	1		110	C	E	MOTOR	24"W x 36"D	MOBILE
16	CUT OFF SAW	3 HP	1		230	C	E	MOTOR	27"W x 40"D	MOBILE
17	RECIPROLAP	1/2 HP	1		110	C	E	MOTOR	36"W x 36"D	MOBILE
18	FUSING KILN		1	30 AMP	230	C	E	HEATING ELEMENTS		MOBILE
19	BENCH									MOBILE
20	MARVER									MOBILE





THIS DOCUMENT AND THE IDEAS INCORPORATED HEREIN, AS AN INSTRUMENT OF PROFESSIONAL SERVICE IS THE PROPERTY OF VERANZO AND IS NOT TO BE USED, IN WHOLE OR IN PART FOR ANY PROJECT WITHOUT THE PRIOR WRITTEN AUTHORIZATION OF VERANZO.

CONSULTANT



PHILIP S. VERA CRUZ

PROJECT



TENANT IMPROVEMENT
 504 WASHINGTON STREET
 CALISTOGA, CA 94515
 APN.011.260.001

REVISION DATE

SHEET CONTENTS

ELECTRICAL PLAN

SCALE 1/4"=1'-0"

DATE 07.13.21

DRAWN BY BMV

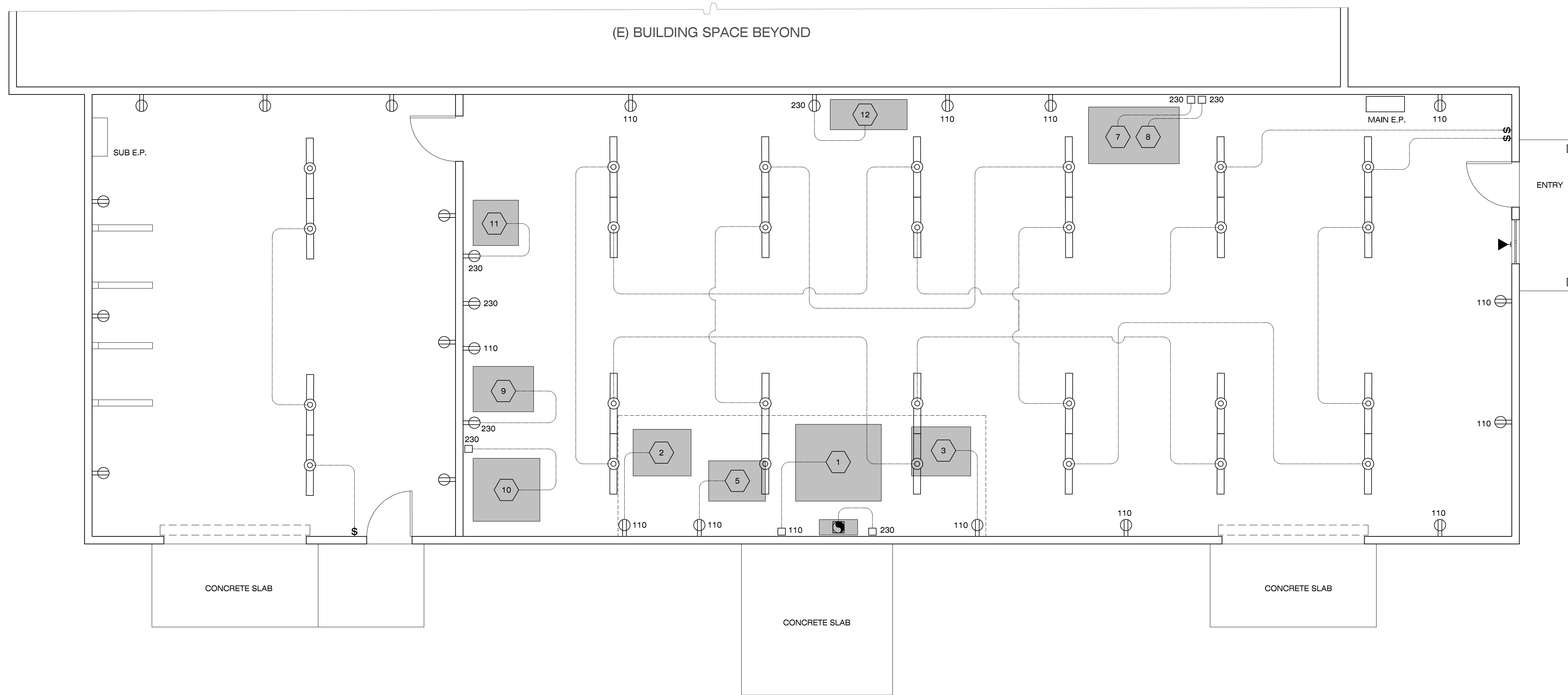
CHECKED BY

JOB NO. 21-023

SHEET NO.

E1.0

CONSTRUCTION DOCUMENTS SUBMITTAL 8.26.21



EQUIPMENT LEGEND :

- 1 — FURNACE 120 VAC
- 2 — SMALL GLORY HOLE 120 VAC
- 3 — MEDIUM GLORY HOLE 120 VAC
- 5 — PIPE WARMER 120 VAC
- 10 — SMALL ANNEALER 208 V
- 9 — COLOR BOX 208 240 V
- 11 — FLAT MILL 230 V
- 7 — ANNEALER (BOTTOM) 208 V
- 8 — ANNEALER (TOP) 208 V

ELECTRICAL LEGEND :

- MAIN E.P. [Symbol] MAIN ELECTRICAL PANEL
- SUB E.P. [Symbol] ELECTRICAL SUB-PANEL
- \$ SWITCH
- [Symbol] WALL EX-HAUST FAN 230/460
- [Symbol] FLOURESCENT LIGHT
- (E) TELEPHONE OUTLET
- [Symbol] CONVENIENCE OUTLET

1 ELECTRICAL PLAN
 SCALE 1/4"= 1'-0"

