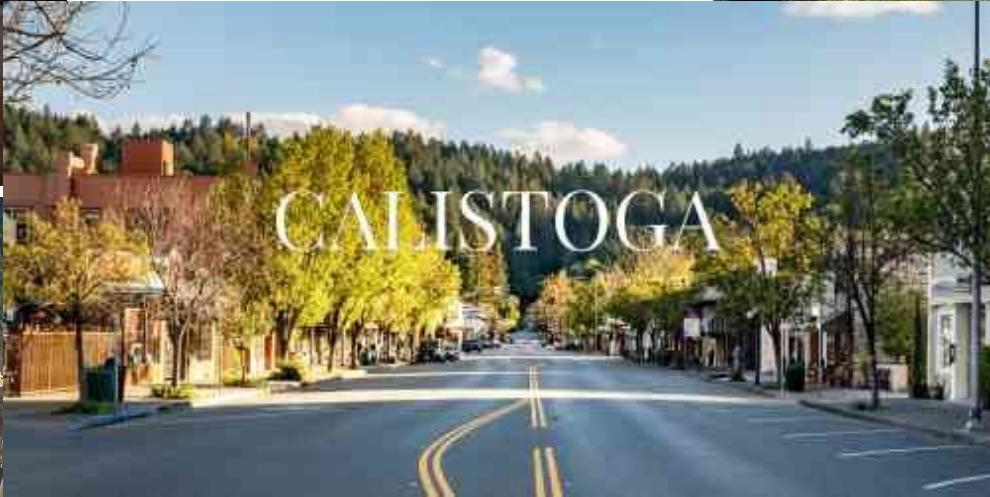


# Calistoga Resiliency Center: Design Considerations





# Calistoga Character Elements





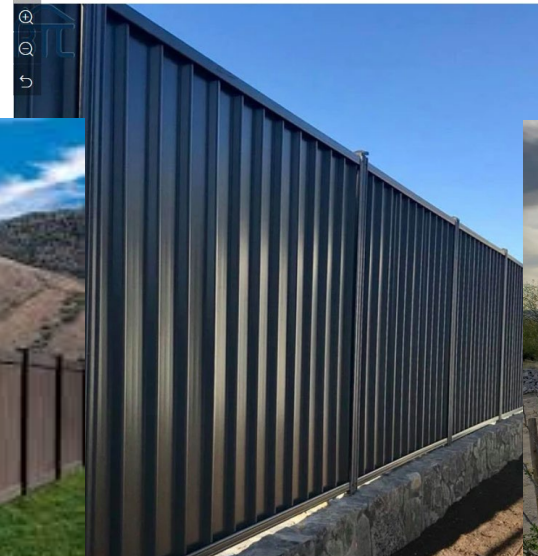
# Design Review Proposals and Considerations

## Design Review Proposals:

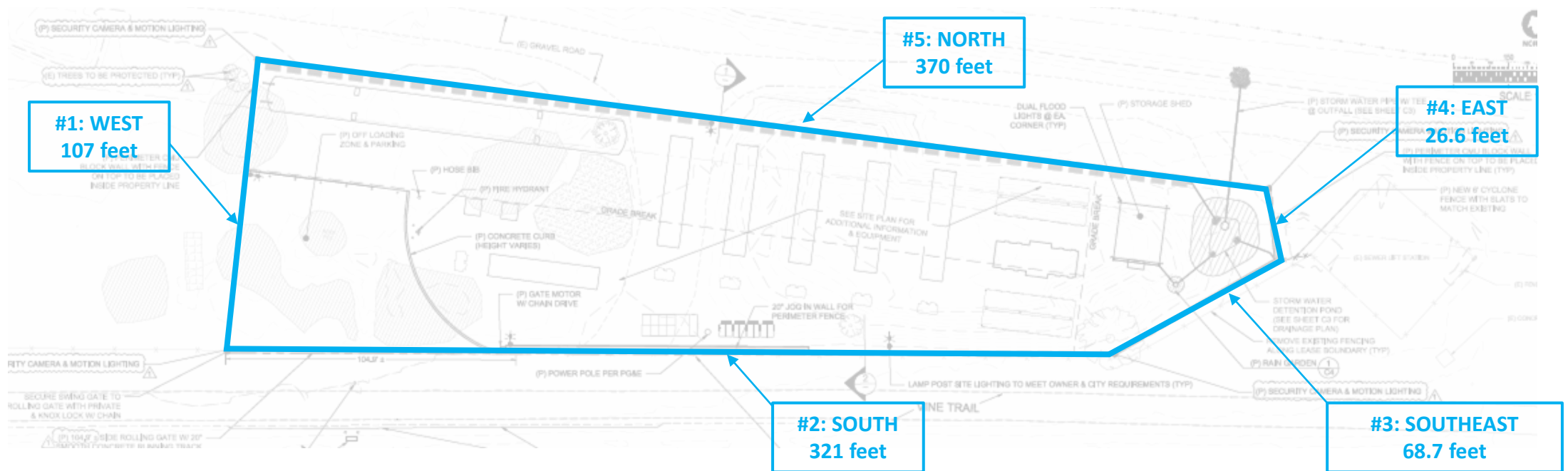
1. **Natural Elements:** Simulated stone and/or wood maintain the City of Calistoga of natural materials element while utilizing sustainable, lower cost, and recycled material.
2. **Industrial Metal:** Sheet metal – corrugated or R Panel – provides clean, sustainable, and virtually maintenance free security.
3. **Artistic Metal:** Industrial metal that's been treated to create visual interest in keeping with the City of Calistoga's unique character.
4. **Hybrid:** A mix of treatments applied based on visual access and City of Calistoga security concerns.

## Design Considerations:

1. Maximize visual relief where needed most, and offset costs with minimal treatment where not needed (i.e. North-facing wall).
2. Take into consideration all health and safety aspects, such as congregating for photos, materiality as it translates to projectiles in an explosion, and security.
3. Sustainability and maintenance should be considered.



# Layout Diagram and Visual Access Considerations



- **#1 West side:** high visibility by users of the Vine Trail traveling east, with pastoral vineyard background viewsheds.
  - Consider treatment with Natural Elements or a painted mural to blend in with pastoral viewshed and maintain City of Calistoga character.
  - Consider increased fence height and/or vegetation to screen LH2 tank.
- **#2 South/Vine Trail side:** high visibility by users of the Vine Trail
  - Consider treatment with Artistic Metal and/or painted murals to soften view and maintain City of Calistoga character.
- **#3 Southeast side:** high visibility by users of the Vine Trail traveling west; gateway to Calistoga.
  - Consider treatment with Natural Elements or a painted mural to blend in with pastoral viewshed and/or welcome visitors to Calistoga.
- **#4 East side (small section facing lift station):** lower visual access
  - Consider treatment with Natural Elements and/or Industrial Metal (i.e. lower-cost options given limited visual access).
- **#5 North side:** minimal visual access
  - Consider treatment with Natural Elements and/or Industrial Metal (i.e. lower-cost options given limited visual access).



# Proposal #1: Natural Elements



## What Makes Simulated Stone Fence Products Different?

Possibly the most beautiful manufactured privacy fence ever made!

### Patented construction

Made with proprietary Linear Low Density Polyethylene Plastic (LLDPE) and reinforced with galvanized steel.

### Superior wind rating

Can withstand constant hurricane force winds up to 110 mph and 130 mph gusts. Certified to Dade County, Florida hurricane requirements.

### Excellent sound barrier

Blocks 98% of direct sound with a sound transmission class (STC) rating of 26.

### Durable in temperature extremes

It is very stable in temperature extremes. Withstands tests at -40°F to 140°F.

### Color options

We offer five natural granite colors: Brown Granite, Grey Granite, Beige Granite, Dark Brown Granite, or Black Granite.

### Easy installation

It is the most user-friendly fence on the market and we offer full installation instructions and support with each order.

### Graffiti resistant

Easily remove graffiti using a high-powered pressure washer.

### Solid privacy and security

It provides exceptional privacy and security for you and your family.

### Lifetime warranty

A maintenance-free solution. Our patented fence will never need painting or staining; nor will it warp, fade or crack.

### A cost effective solution

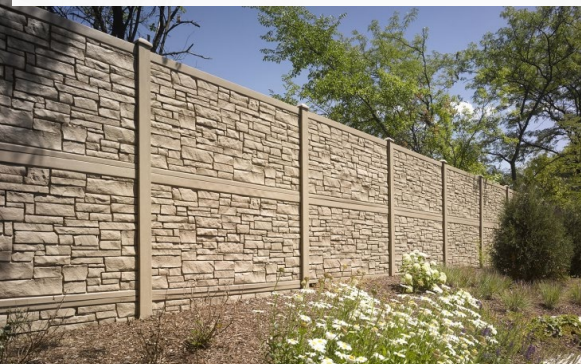
It offers a maintenance-free solution. Our patented fence will never need painting or staining; nor will it warp, fade or crack.

### Proudly Made in the USA

Free Shipping For large Orders. Fast nationwide shipping direct to your project location. Contact us 24/7 for a free quote!

### Fade resistant

It contains xenon-arc 12 UV inhibitors for a lifetime of vibrant colors.



**BERRIDGE**  
MANUFACTURING COMPANY

(800) 669-0009  
www.Berridge.com

**Standard Colors**

Sheets White	Parchment	Almond	Sierra Tan	Buckskin
Medium Bronze	Aged Bronze	Copper Brown	Dark Bronze	Terra-Cotta
Deep Red	Colonial Red	Burgundy	Bristol Blue	Royal Blue
Patina Green	Hemlock Green	Tail Green	Forest Green	Evergreen
Hartford Green	Cityscape	Zinc Grey	Charcoal Grey	Matte Black

**Premium Colors**  
Premium colors require a standard surcharge.

Natural White	Award Blue	Champagne	Copper-Cote™	Antique Copper-Gle
---------------	------------	-----------	--------------	--------------------

**Metallic Colors**  
Metallic colors are premium finishes which require a standard surcharge.

Natural Metal Finish <small>Acrylic-Created Galvalume® is a coated sheet product that combines the corrosion resistance of Galvalume® metal sheet with a clear, liquid-applied finish to provide protection and color when installed.</small>	Acrylic-Created Galvalume®	Zinc-Cote™	Lead-Cote™	Preweathered Galvalume®
--	----------------------------	------------	------------	-------------------------

**Print Pattern Finishes**  
Small lot sizes may require a minimum order quantity.

COR-TEN AZ108 Flare	Walnut	Honey Walnut	Pinewood	Boston Cherry
---------------------	--------	--------------	----------	---------------

We make Trex® eco-friendly composite fencing from an innovative blend of 96% recycled wood and plastic—that's almost the whole thing. And we've been this way for more than 20 years, well before green was a buzzword. Because in the end, all of us want to look out on our fences and know that we've done our part. As one of the largest plastic recyclers in the U.S., Trex saves 400 million pounds of plastic and wood from landfills each year. In addition to contributing to a healthier environment, our eco-friendly composite fences also contribute to LEED points—not to mention your good karma. Learn about Trex and the **U.S. Green Building Council's LEED Rating System™**.

## WHY A TREX® COMPOSITE FENCE IS GREEN

### RECYCLED WOOD

Reclaimed wood that would otherwise end up in a landfill finds its way into Trex high-performance composite materials. By using reclaimed sawdust, we never have had to cut down a tree to make our products. Ever.

### RECYCLED PLASTIC

The recycled wood in our fences is combined with recycled plastic from a variety of sources ranging from the overwrap on paper towels to dry cleaner bags, sandwich bags, newspaper sleeves, and grocery and shopping bags. Here's an interesting fact: the average 100-linear foot Trex composite fence contains 140,000 recycled plastic bags! That makes us one of the largest plastic bag recyclers in the U.S.

### ECO-FRIENDLY MANUFACTURING

Trex's proprietary, eco-friendly processing method eliminates the use of smoke stacks. Also, our factory runoff and refuse are recycled back into the manufacturing line. Our trailers even run on vegetable-based oil hydraulics.

### THE BIG PICTURE

Trex works along with other U.S. Green Building Council members to transform the way buildings and communities are designed, built and operated with the goal of creating environmentally and socially responsible spaces that improve the quality of life.

"WE HAVEN'T FELLED ONE TREE IN THE MAKING OF TREX HIGH-PERFORMANCE COMPOSITE FENCING, EVER."



## Berridge Advantages:

Fire resistant and termite proof.

High strength, all steel construction with higher wind rating than alternate products.

Permanent: will not rot, fade, crack or split.

100% recyclable, produced from 32.9% pre-consumer and post-recyclable material.

Limited wood grain and stucco embossing available.



# Proposal #1: Natural Elements



## **Requirements Met:**

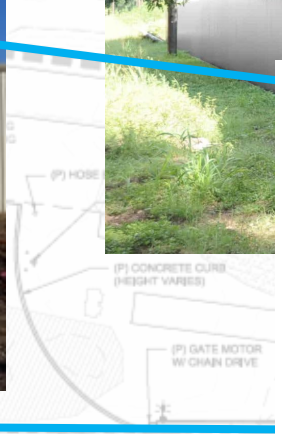
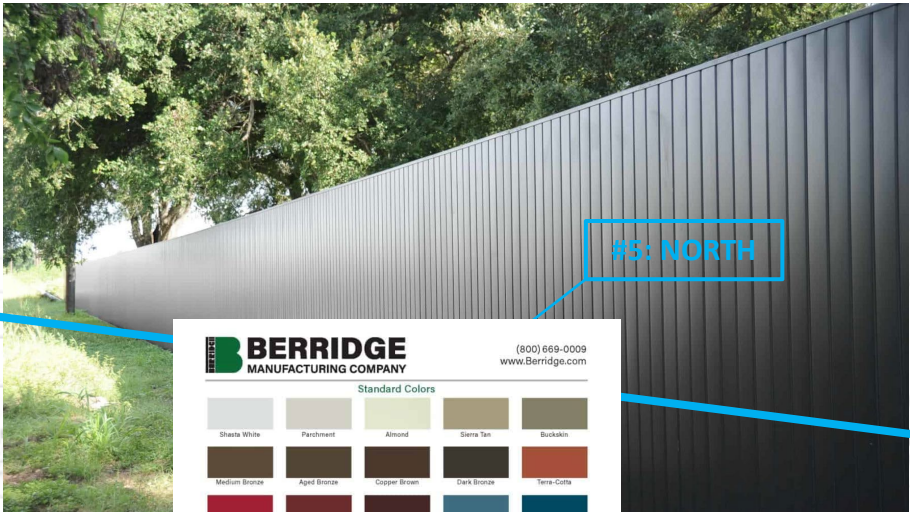
- Acceptable material (A1 & A2)
  - Vinyl or precast concrete with overall natural appearance
- Natural Appearance (A3)
  - Overall natural appearance
- Visual Relief (A6)
  - Textured relief
  - Decorative columns
  - Capping
- Height (A8 & B1)
  - Provides screening, noise attenuation, and security

## **Considerations:**

- Cost effective
- Pre-manufactured
- Low maintenance
- Paintable
- Climability/security
- Sustainability and natural texture/origin



# Proposal #2: Industrial Metal



**BERRIDGE**  
MANUFACTURING COMPANY

(800) 669-0009  
www.Berridge.com

**Standard Colors**

Sheets White	Parchment	Almond	Sierra Tan	Buckskin
Medium Bronze	Aged Bronze	Copper Brown	Dark Bronze	Terra-Cotta
Deep Red	Colonial Red	Burgundy	Bristol Blue	Royal Blue
Patina Green	Hemlock Green	Tail Green	Forest Green	Evergreen
Hartford Green	Cityscape	Zinc Grey	Charcoal Grey	Matte Black

**Premium Colors**  
Premium colors require a standard charge.

Natural White	Award Blue	Champagne	Copper-Cote™	Antique Copper-Gle
---------------	------------	-----------	--------------	--------------------

**Metallic Colors**  
Metallic colors are premium finishes which require a standard charge.

Natural Metal Finish Acrylic-Coated Galvalume® is a coated sheet product that combines the corrosion resistance of Galvalume® steel with a clear, liquid-applied acrylic resin finish to provide color and gloss.	Acrylic-Coated Galvalume®	Zinc-Cote™	Lead-Cote™	Preweathered Galvalume®
---	---------------------------	------------	------------	-------------------------

**Print Pattern Finishes**  
Special 100% acrylic pattern printing available.

COR-TEN AZ108 Flare	Walnut	Honey Walnut	Pinewood	Boston Cherry
---------------------	--------	--------------	----------	---------------

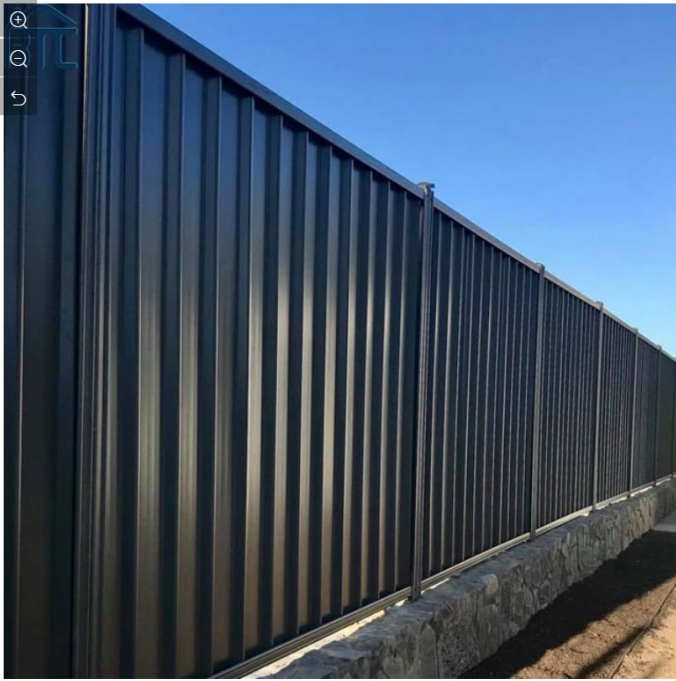
Please consult the Berridge Technical Department at berridge@berridge.com for 2023 color and finish specifications. Data is referenced to the printing process (Pantone 2020) color for accurate color matching.



**Berridge Advantages:**  
 Fire resistant and termite proof.  
 High strength, all steel construction with higher wind rating than alternate products.  
 Permanent: will not rot, fade, crack or split.  
 100% recyclable, produced from 32.9% pre-consumer and post-recyclable material.  
 Limited wood grain and stucco embossing available.



# Proposal #2: Industrial Metal



## **Requirements Met:**

- Prohibited material (A2)
  - Requirement met
- Visual Relief (A6)
  - Textured relief
- Height (A8 & B1)
  - Provides screening, noise attenuation, and security

## **Considerations:**

- Potentially cost effective
- Consider using along Vine Trail, only?
- Paintable
- Pre-manufactured
- Low maintenance
- “Sealed metal” necessary (maintenance)
- Upper valley context
- Overriding considerations (Use Permit findings override Design Review requirements, i.e., safety and security)
- Blast and fire compatible



# Proposal #3: Artistic Metal



#1: WEST

#5: NORTH

#2: SOUTH

#3: SOUTHEAST



# Proposal #3: Artistic Metal



## Requirements Met:

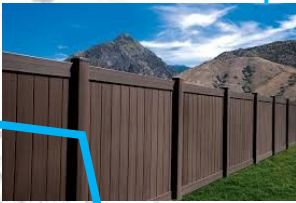
- Prohibited material (A2)
  - Requirement met
- Visual Relief (A6)
  - Textured relief
  - Decorative columns
- Height (A8 & B1)
  - Provides screening, noise attenuation, and security

## Considerations:

- Potentially high-cost
- Low maintenance
- Pre-manufactured
- Meets functional requirements



# Proposal #4: Hybrid



#4: EAST

& MOTION LIGHTING  
METER ONLY BLOCK WALL  
FENCE ON TOP TO BE PLACED  
PROPERTY LINE (TYP)  
(P) NEW 6' CYCLONE  
FENCE WITH SLATS TO  
MATCH EXISTING





# Proposal #4: Hybrid



Local Artist Carlo Marchiori



Hybrid Renderings



## Requirements Met:

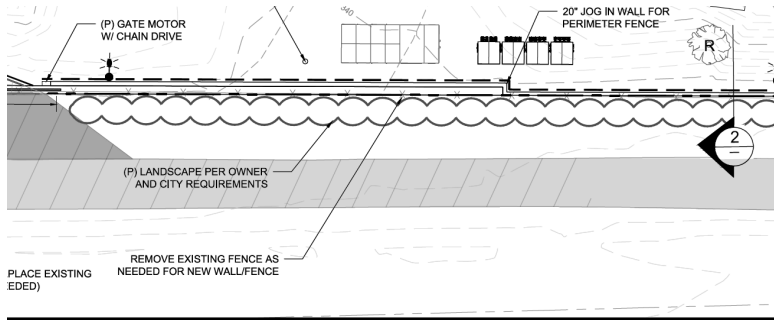
- Prohibited material (A2)
  - Requirement met
- Visual Relief (A6)
  - Textured relief
  - Decorative columns
- Height (A8 & B1)
  - Provides screening, noise attenuation, and security

## Considerations:

- Utilize higher-cost treatments where visual relief is needed most
- Opportunity to partner with local metalsmith/artist for artistic screening along the Vine Trail
- Low maintenance
- Pre-manufactured
- Meets functional requirements while maintaining price options
- High likelihood of support



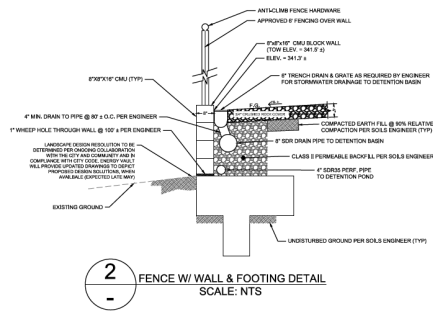
# Landscaping



SITE PLAN

NORTHWEST ELEVATION VIEW

SCALE: 1" = 15'  
HORIZ. : VERT. = 1:1



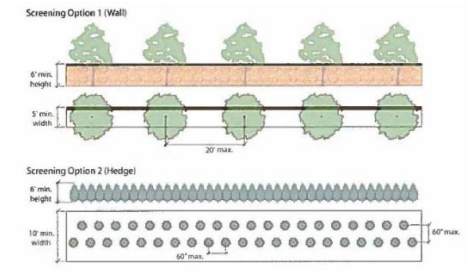
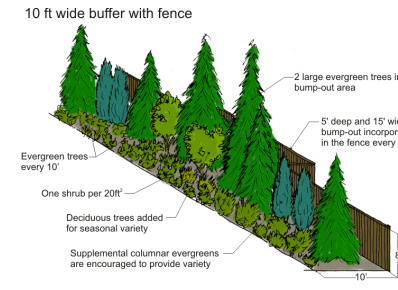
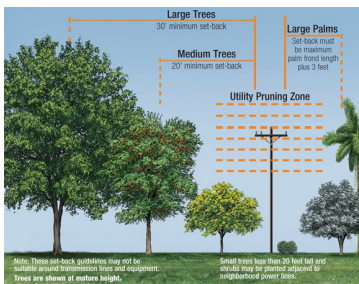
2 FENCE W/ WALL & FOOTING DETAIL  
SCALE: NTS

## Requirements:

- Visual Relief (A6)

## Considerations:

- O&M access to equipment
  - Vegetation height and type restrictions for maintenance access
  - Proximity to power lines and planting restrictions
- Continued use of adjacent areas by the City
  - Does use by the City prohibit/prevent regular access?
  - Is security a concern for “gawkers”, and can screening contribute or alleviate?
- City does not have budget nor capacity to maintain landscaping
- Consider differentiated fence panel heights and/or vegetative screening for visual relief of LH2 tank from west of Project site
- Screening plan strategies:
  - organic (random patterning) vs. formal (ordered patterning)
  - intentional framing of wall views and/or distant vistas
  - functional aspects related to passive security as deterrent to gawkers

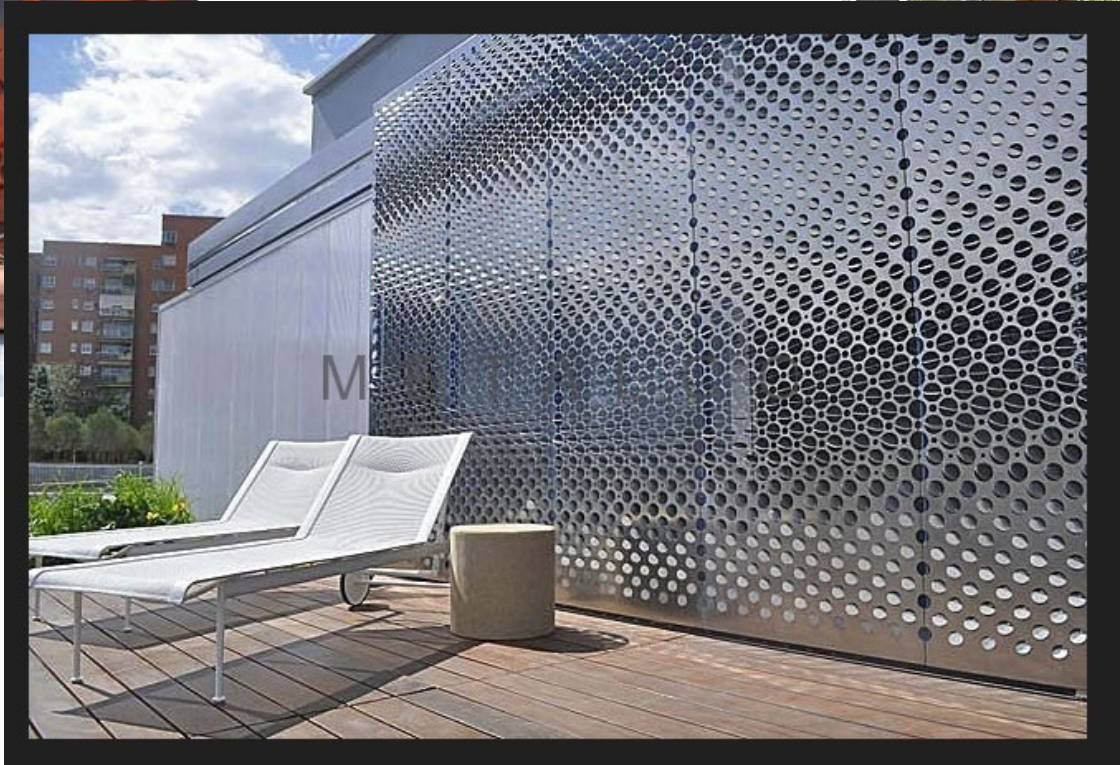




# Reference/Archived Slides

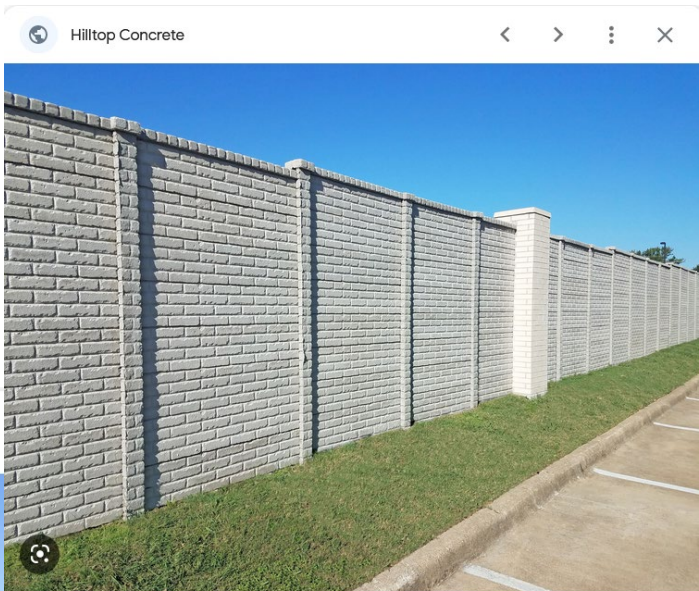
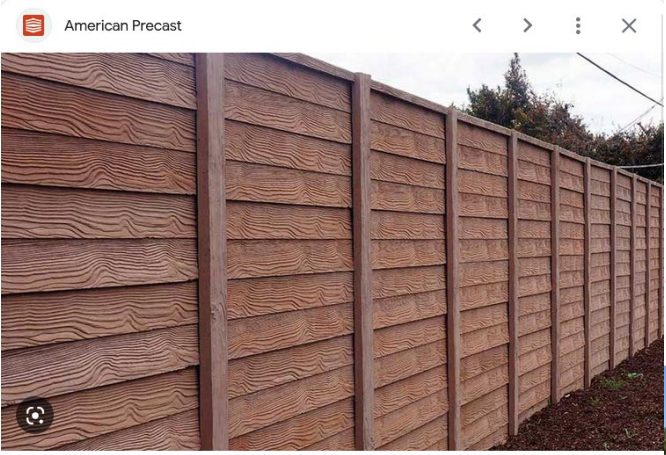


# Artistic Metal Screening Options





# Precast Concrete and TREX Screening Options





# Louvered Security Screening Options

Industrial Louvers



American Fence Company of Cedar Rapids, Iowa

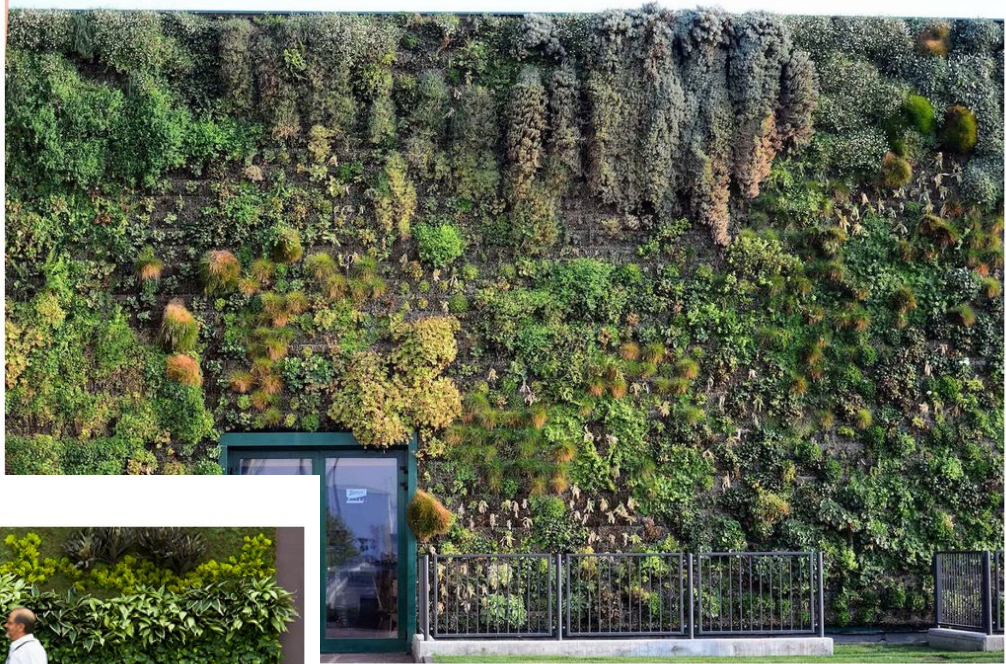
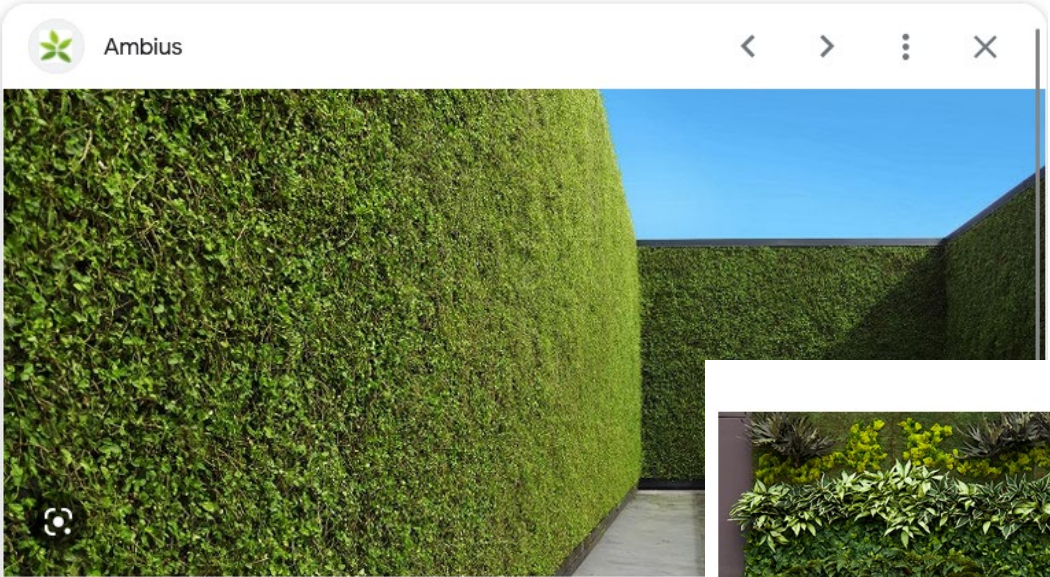


IMARK Metals





# Green Wall Screening Options



Exterior Tropical Green Wall

**ARTIFICIAL!**





# Vine Trail Mural Examples





# Industrial Gate Options

