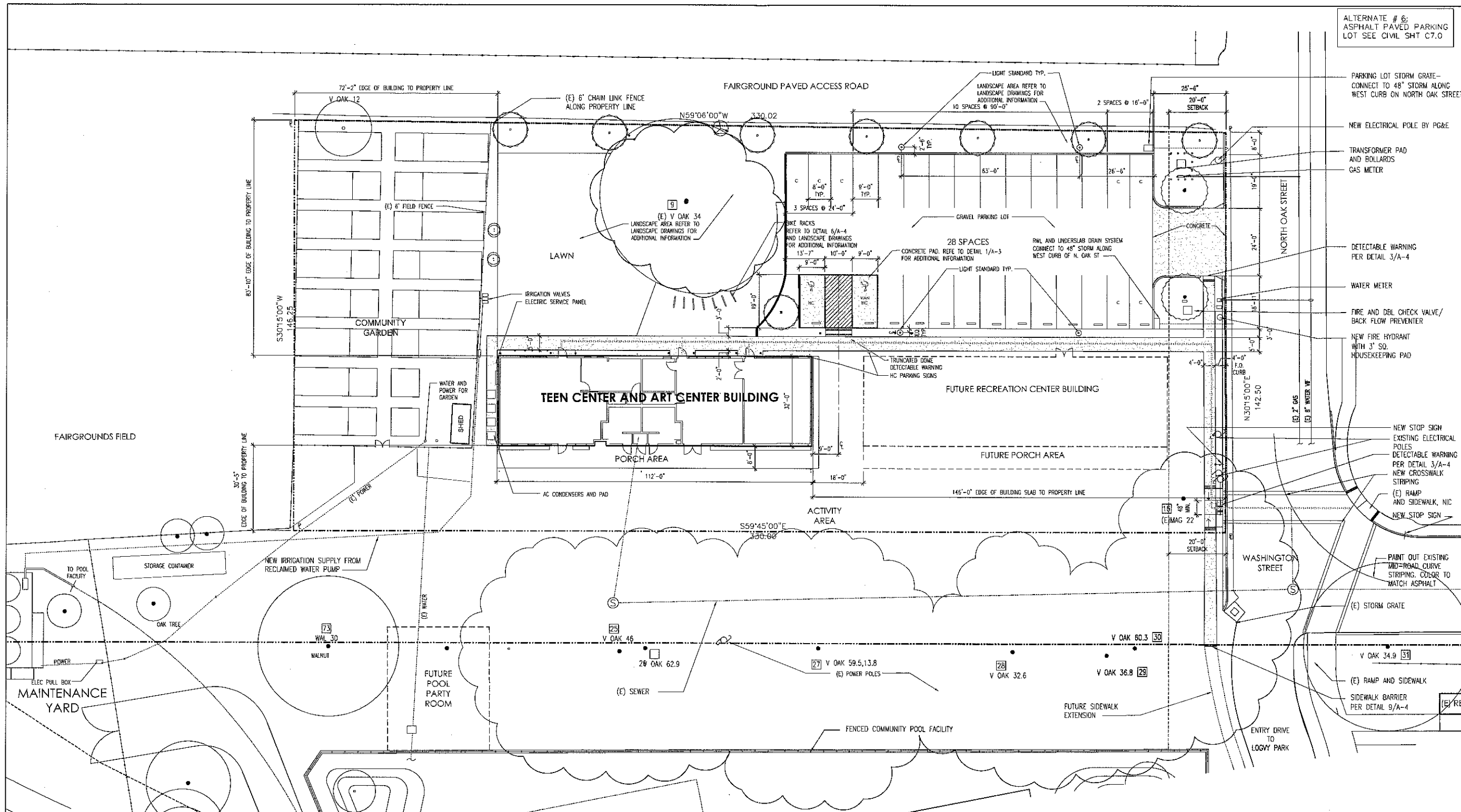


ALTERNATE # 6:
ASPHALT PAVED PARKING
LOT SEE CIVIL SHT C7.0



KINZIE & ASSOCIATES

1737 N. OAK STREET
CALISTOGA CA 94515
P 707-942-8357
F 707-942-8359
E kinzeca@aol.com



- PARKING LOT STORM GRATE—CONNECT TO 48" STORM ALONG WEST CURB ON NORTH OAK STREET
- NEW ELECTRICAL POLE BY PG&E
- TRANSFORMER PAD AND BOLLARDS
- GAS METER
- DETECTABLE WARNING PER DETAIL 3/A-4
- WATER METER
- FIRE AND DBL CHECK VALVE/BACK FLOW PREVENTER
- NEW FIRE HYDRANT WITH 3" SQ. HOUSEKEEPING PAD
- NEW STOP SIGN
- EXISTING ELECTRICAL POLES
- DETECTABLE WARNING PER DETAIL 3/A-4
- NEW CROSSWALK STRIPING
- (E) RAMP AND SIDEWALK, NIC
- NEW STOP SIGN
- PAINT OUT EXISTING MID-ROAD CURVE STRIPING, COLOR TO MATCH ASPHALT
- (E) STORM GRATE
- (E) RAMP AND SIDEWALK
- SIDEWALK BARRIER PER DETAIL 9/A-4

TEEN CENTER AND ART CENTER BUILDING
LOGGY COMMUNITY PARK
1401 NORTH OAK STREET
CALISTOGA CA 94515
APN #011-140-056

1 SITE PLAN
SCALE 1/8" = 1'-0"

GENERAL NOTES

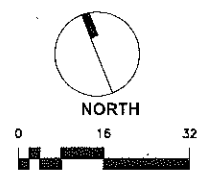
1. OVERALL BUILDING DIMENSIONS ARE TO OUTSIDE OF MAT SLAB.

LEGEND

— ACCESSIBLE PATH OF TRAVEL

11.03.09
PRELIMINARY
NOT FOR
CONSTRUCTION

ARCHITECTURAL
SITE
PLAN



A-2

SHEET NOTES

Cultural Resources. There is a possibility that buried archaeological deposits could be present in the Work Area. Accordingly the City will retain a professional archaeologist who shall be on-site during earth disturbing activities to monitor and advise in the case that artifacts or other features are encountered. Contractor shall provide reasonable notification to archaeologist of schedule for earth-disturbing activities and coordinate with such monitoring.

Tree Protection. See Sheet A1.2 for Tree Protection Requirements.

Temporary Fencing and Security. The 'Area of Work' is currently fenced. Once the (E) fencing is removed, contractor to provide temporary fencing as required to enclose and secure the site. Security of all aspects of the project site, including Contractor's equipment, tools and materials, is the responsibility of the Contractor. Access by others to the maintenance yard and community garden shall be facilitated at all times.

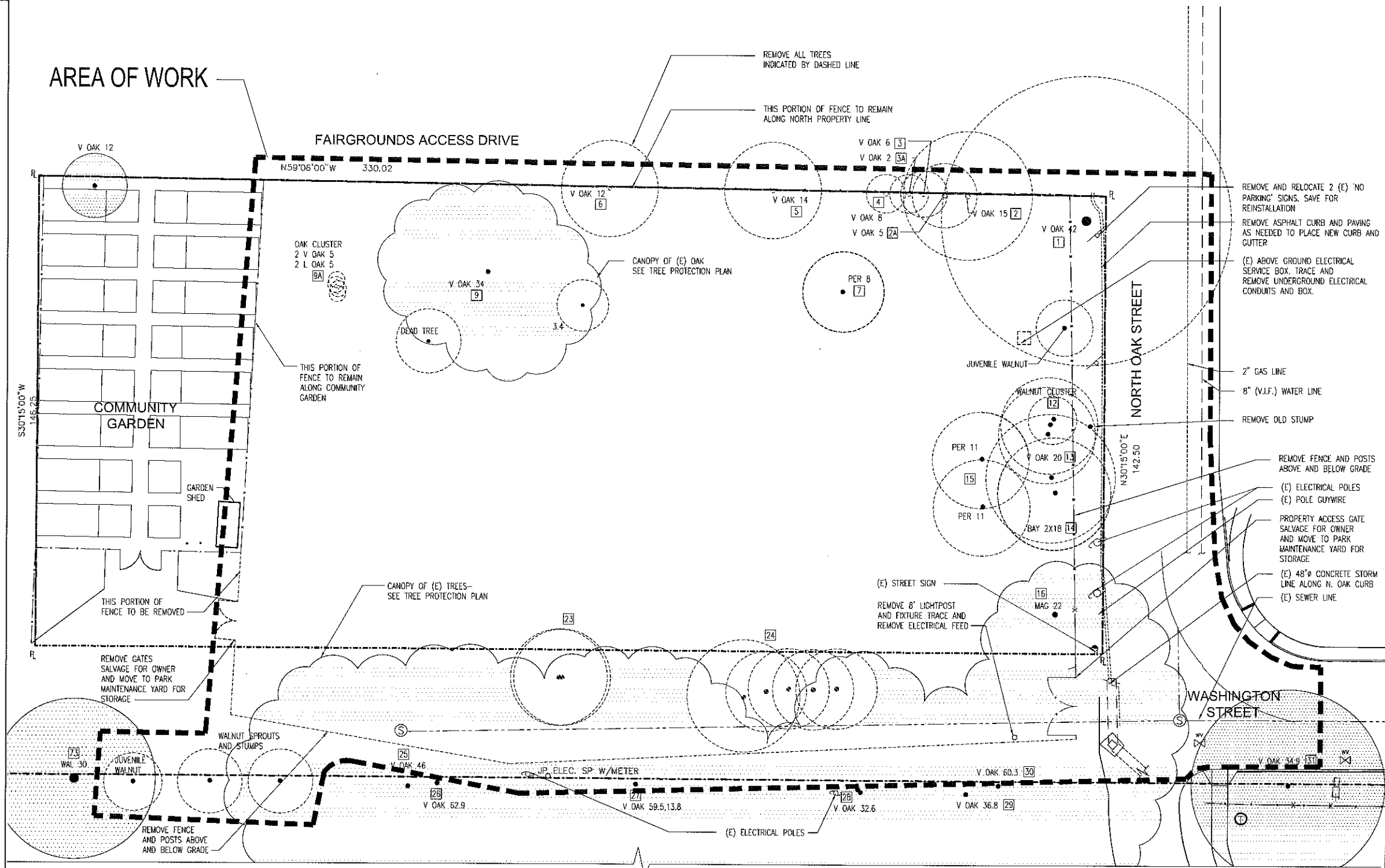
Staging. All materials and equipment must be staged within the 'Area of Work'. No materials or equipment are to be left in the street or anywhere on-site outside of the 'Area of Work', unless specifically authorized in writing by the Public Works Director.

Tree Removal. All indicated trees and all shrubs are to be removed and the primary roots removed. Trees that are shaded on the site plan are to remain - they are not to be removed.

Clearing and Removal of Debris. The entire area designated 'Area of Work' shall be cleared of all vegetation, bushes, dead trees and fallen branches, and raked clean of dead weeds, leaves, pinecones, and debris. All such material shall be removed from the site and disposed of appropriately. Areas which fall within fenced Tree Protection Zones will need to be hand raked.

Backfilling Voids. Voids created by removal of fence posts, below grade utility lines, tree roots, etc. may be filled with native soil spread in thin lifts, uniformly moisture-conditioned to near optimum and properly compacted.

Condition of the Site Following Demo. Once the ground surface has been cleared and the voids filled, rough grade as needed to restore an even surface, match existing grades, provide smooth transition and positive drainage toward the storm grate at the corner of N. Oak and Washington streets, taking care that no areas of ponding are created. Upon approval of the grading by the City, cover areas that will not be disturbed by construction with 3" of seed free rice straw, and walk the straw in to ensure solid contact with the soils.



KINZIE & ASSOCIATES
 1737 N. OAK STREET
 CALISTOGA CA 94515
 P 707-942-8357
 F 707-942-8359
 E kinzieca@aol.com

TEEN CENTER AND ART CENTER BUILDING
 LOGGY COMMUNITY PARK
 1401 NORTH OAK STREET
 CALISTOGA CA 94515
 APN #011-140-056

11.03.09
 PRELIMINARY
 NOT FOR
 CONSTRUCTION

SITE
 DEMOLITION
 PLAN

A-1

ID#	TREE DESCRIPTION
1	Valley Oak 42 12DBH 4' high to west
2	Valley Oak 107DBH
2A	Valley Oak 105DBH
3	Valley Oak 102DBH
3A	Valley Oak 103DBH
4	Valley Oak 101DBH
5	Valley Oak 147DBH
6	Valley Oak 102DBH
7	Hedgey Pearshorn 8' DBH trunk top
8A	Valley Oak 70 107DBH Canal Line Oak 10' DBH dead fruitless
12	Black Walnut cluster 5, 8 diam 45/102/111-7DBH
13	Valley Oak 21 8' DBH 4' high to west
14	California Bay 2' diam to 4' DBH 4' high to west
15	American Pershomon 2' diam to 4' DBH 4' high to west
16	Hedgey Pearshorn 10' 2' diam to 4' DBH 4' high to west
17	Dead tree and stump 10' high
23	Dead tree and stump 10' high
24	Dead tree and stump 10' high
25	Dead tree and stump 10' high
26	Dead tree and stump 10' high
27	Dead tree and stump 10' high
28	Dead tree and stump 10' high
29	Dead tree and stump 10' high
30	Dead tree and stump 10' high
31	Dead tree and stump 10' high
32	Dead tree and stump 10' high
33	Dead tree and stump 10' high
34	Dead tree and stump 10' high
35	Dead tree and stump 10' high
36	Dead tree and stump 10' high
37	Dead tree and stump 10' high
38	Dead tree and stump 10' high
39	Dead tree and stump 10' high
40	Dead tree and stump 10' high
41	Dead tree and stump 10' high
42	Dead tree and stump 10' high
43	Dead tree and stump 10' high
44	Dead tree and stump 10' high
45	Dead tree and stump 10' high
46	Dead tree and stump 10' high
47	Dead tree and stump 10' high
48	Dead tree and stump 10' high
49	Dead tree and stump 10' high
50	Dead tree and stump 10' high
51	Dead tree and stump 10' high
52	Dead tree and stump 10' high
53	Dead tree and stump 10' high
54	Dead tree and stump 10' high
55	Dead tree and stump 10' high
56	Dead tree and stump 10' high
57	Dead tree and stump 10' high
58	Dead tree and stump 10' high
59	Dead tree and stump 10' high
60	Dead tree and stump 10' high
61	Dead tree and stump 10' high
62	Dead tree and stump 10' high
63	Dead tree and stump 10' high
64	Dead tree and stump 10' high
65	Dead tree and stump 10' high
66	Dead tree and stump 10' high
67	Dead tree and stump 10' high
68	Dead tree and stump 10' high
69	Dead tree and stump 10' high
70	Dead tree and stump 10' high
71	Dead tree and stump 10' high
72	Dead tree and stump 10' high
73	Dead tree and stump 10' high
74	Dead tree and stump 10' high
75	Dead tree and stump 10' high
76	Dead tree and stump 10' high
77	Dead tree and stump 10' high
78	Dead tree and stump 10' high
79	Dead tree and stump 10' high
80	Dead tree and stump 10' high
81	Dead tree and stump 10' high
82	Dead tree and stump 10' high
83	Dead tree and stump 10' high
84	Dead tree and stump 10' high
85	Dead tree and stump 10' high
86	Dead tree and stump 10' high
87	Dead tree and stump 10' high
88	Dead tree and stump 10' high
89	Dead tree and stump 10' high
90	Dead tree and stump 10' high
91	Dead tree and stump 10' high
92	Dead tree and stump 10' high
93	Dead tree and stump 10' high
94	Dead tree and stump 10' high
95	Dead tree and stump 10' high
96	Dead tree and stump 10' high
97	Dead tree and stump 10' high
98	Dead tree and stump 10' high
99	Dead tree and stump 10' high
100	Dead tree and stump 10' high

NOTES:
 1. Fire Extinguisher. One approved portable fire extinguisher is required on-site during all work in accordance with the 2007 CBC, Section 3309 Fire Extinguishers.
 2. Smoking. In accordance with Section 1404.1 CFC, smoking shall be prohibited except in approved areas. Signs shall be posted in accordance with Section 310. In approved areas where smoking is approved ashtrays shall be provided.
 3. Emergency Telephones. In accordance with Section 1409.1 CFC, a readily accessible emergency telephone shall be provided.
 4. Required Access. In accordance with Section 1410.1 CFC, approved vehicle access for fire fighting shall be provided for all construction and demolition.

1 SITE DEMOLITION PLAN
 SCALE 1/8" = 1'-0"

