

RECEIVED
 MAR 31 2011
 CITY OF CALISTOGA



EXHIBIT "A"

SITE PLAN #2 W/
 POTENTIAL BIKE PATH
 AND TRAFFIC PATTERN
 LEGEND:

- TRUCK TRAFFIC
- AUTOMOBILE TRAFFIC
- BICYCLE PATH

LS 3801

FOOTHILL BLVD.
 STATE HWY. 29

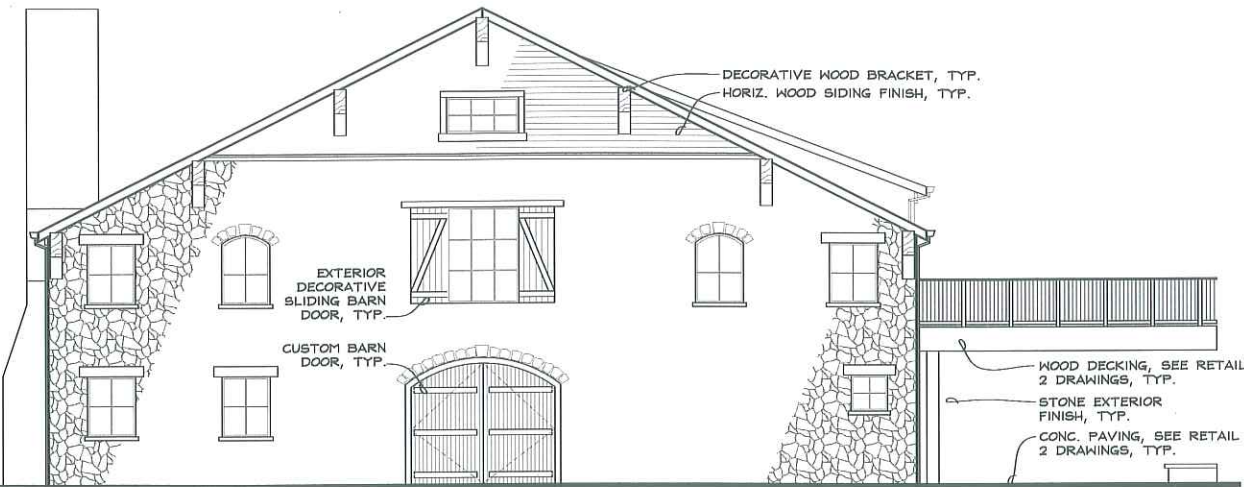
85 FT



OVERALL SITE PLAN #2
 1" = 40' 0"

R CONSTRUCTION

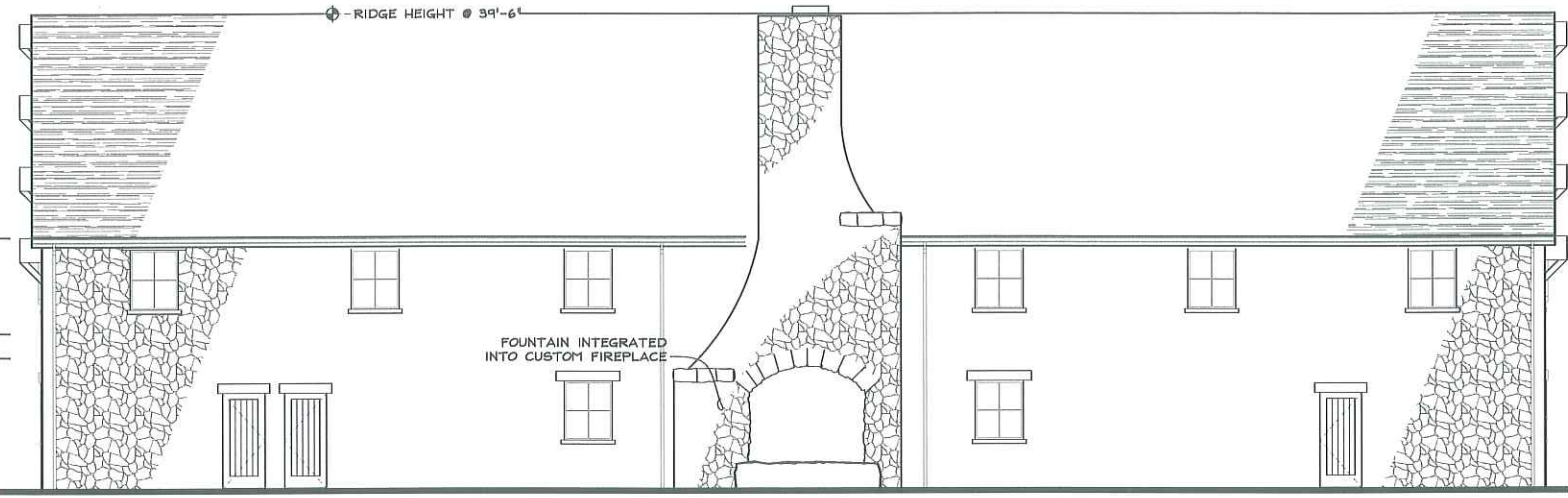
PROJECT:	BOUNSALL	SHEET NUMBER:	
SITE LOCATION:	A.P.N.: XXX XXX	SHEET DESCRIPTION:	EXHIBIT "A" SITE PLAN #2 W/ POTENTIAL BIKE PATH AND TRAFFIC PATTERN
DATE:	XXX	CONSULTANTS:	VAL PIZZINI, ENG. 1400 GUERNEVILLE RD., STE. 12 SANTA ROSA, CA. 95403 VOICE 707.527-9802 FAX 707.527-9801
ARCHITECT:	MARY SIKES & ASSOC. 1461 RAILROAD AVE. ST. HELENA, CA 94574 VOICE 707.963-8063 FAX 707.963-1066	drawn by:	MDN



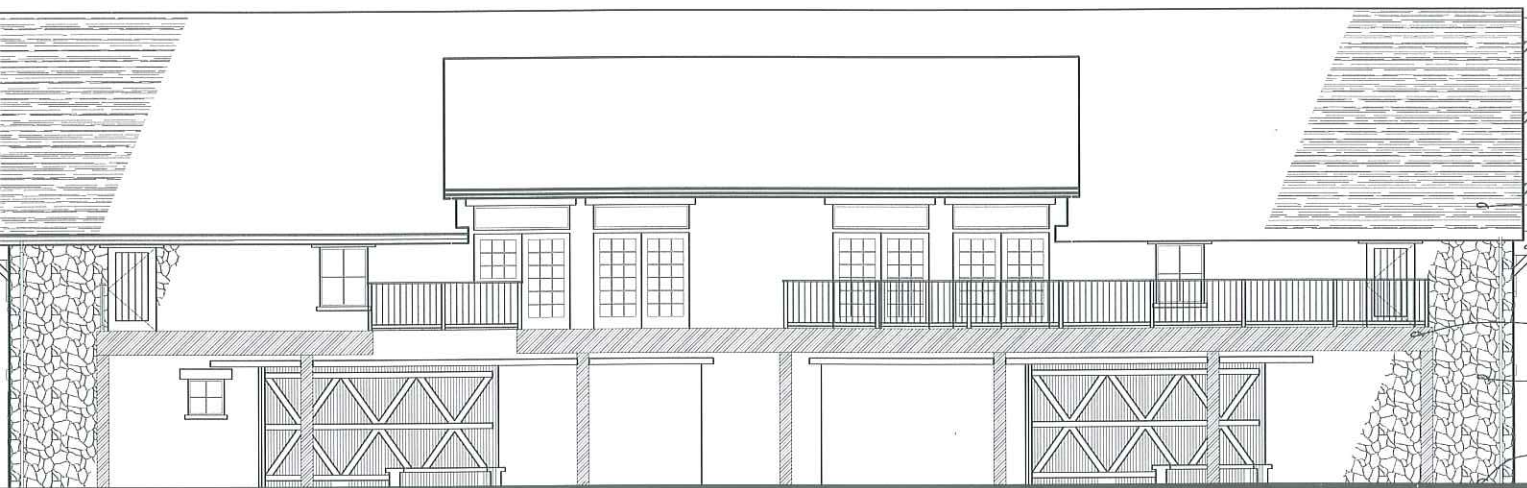
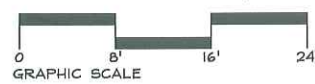
LEFT ELEVATION
1/8"=1'-0"



WOOD DECKING, SEE RETAIL 2 DRAWINGS, TYP.
STONE EXTERIOR FINISH, TYP.
CONC. PAVING, SEE RETAIL 2 DRAWINGS, TYP.



REAR ELEVATION
1/8"=1'-0"



FRONT ELEVATION
1/8"=1'-0"



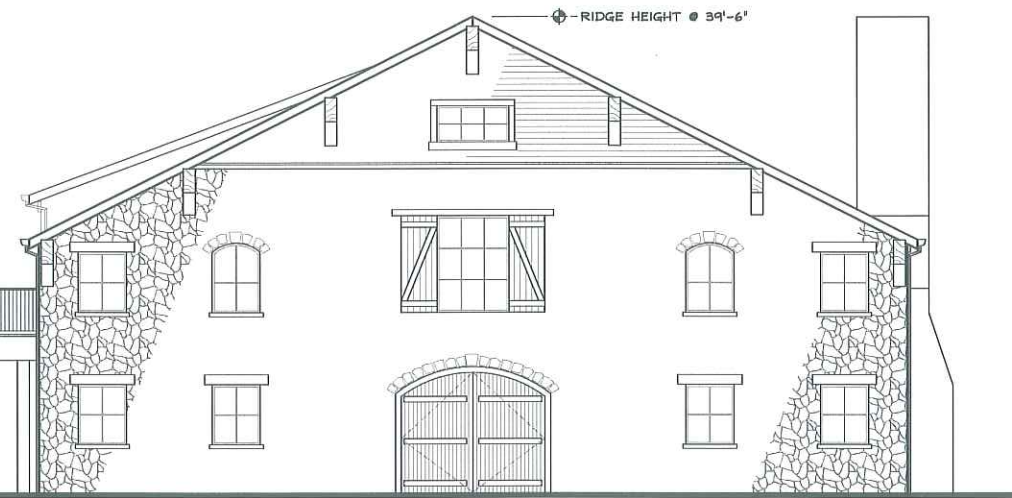
TOP PLATE (S.F.) @ 21'-0' -

SECOND FLOOR @ 13'-0' -

TOP PLATE (F.F.) @ 11'-0' -

FIRST FLOOR @ 0.0' -

WOOD SHINGLE ROOFING, TYP.
DECORATIVE WOOD BRACKET, TYP.
WOOD DECKING, SEE RETAIL 2 DRAWINGS, TYP.
STONE EXTERIOR FINISH, TYP.
CONC. PAVING, SEE RETAIL 2 DRAWINGS, TYP.

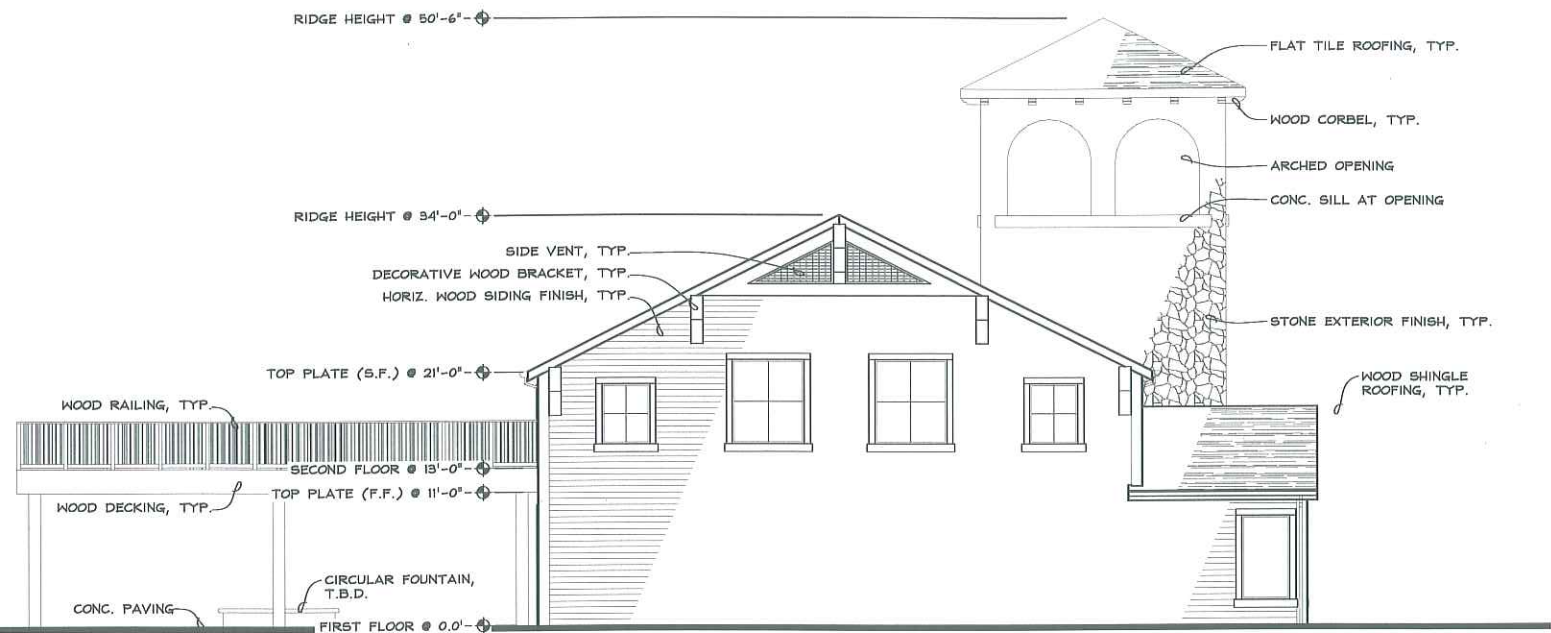


RIGHT ELEVATION
1/8"=1'-0"

CONSTRUCTION

PROJECT:	BOUNSALL BUILDING "A" DELI/ WINE SHOP
SHEET NUMBER:	
SITE LOCATION:	A.P.N.: 011-260-045-074 XXX XXX
SHEET DESCRIPTION:	ELEVATIONS
DATE:	06/15/05
CONSULTANTS:	VAL PIZZINI, ENG. 1400 GUERNEVILLE RD., STE. 12 SANTA ROSA, CA. 95403 VOICE 707.527-9802 FAX 707.527-9801
ARCHITECT:	MARY SIKES & ASSOC. 1461 RAILROAD AVE. ST. HELENA, CA 94574 VOICE 707.963-8063 FAX 707.963-1066

drawn by: MDN



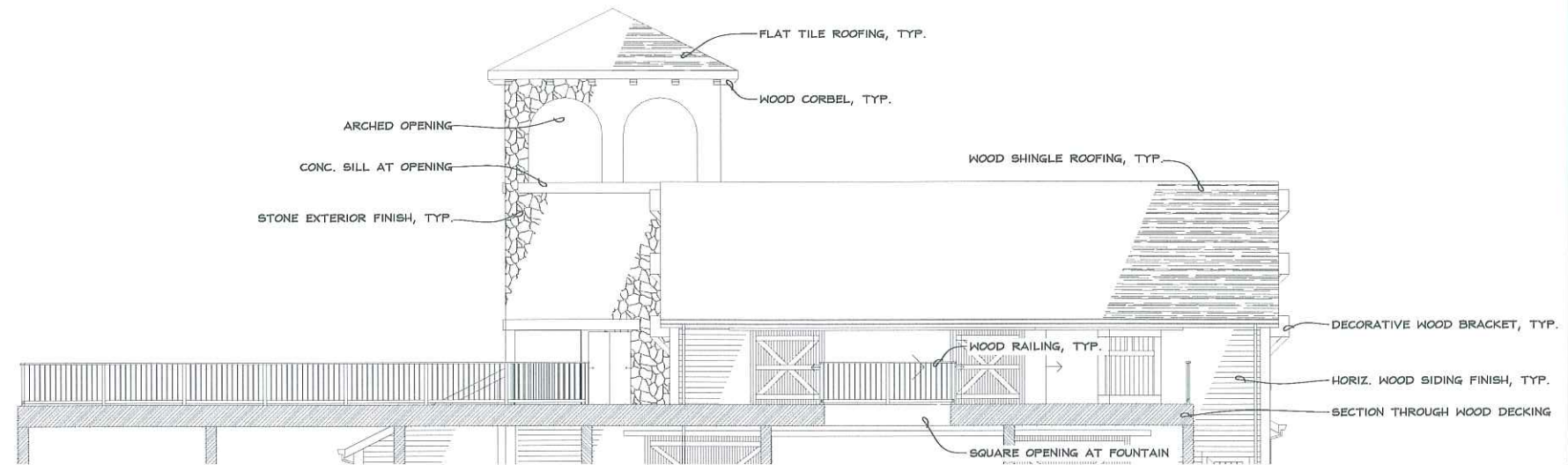
FRONT ELEVATION
1/8"=1'-0"
0 8' 16' 24'
GRAPHIC SCALE



RIGHT ELEVATION
1/8"=1'-0"
0 8' 16' 24'
GRAPHIC SCALE



REAR ELEVATION
1/8"=1'-0"
0 8' 16' 24'
GRAPHIC SCALE

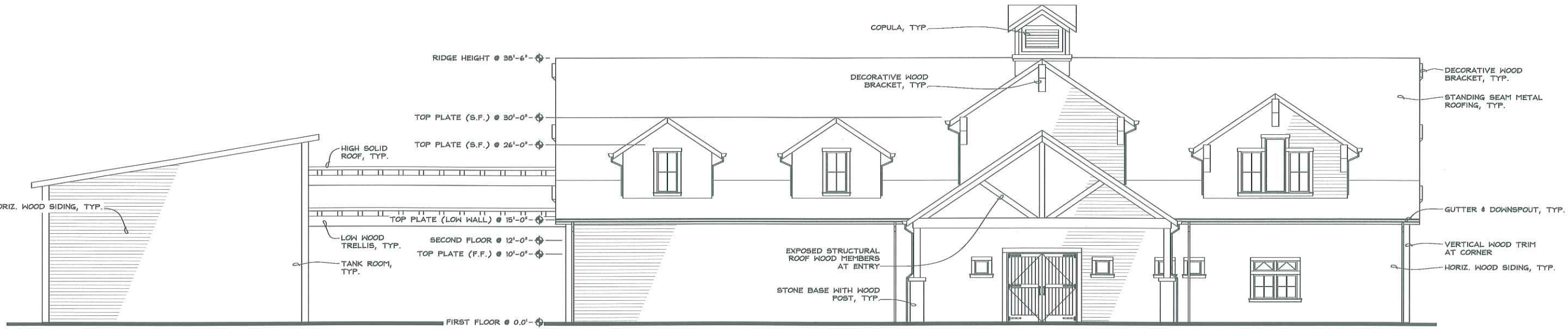


LEFT ELEVATION

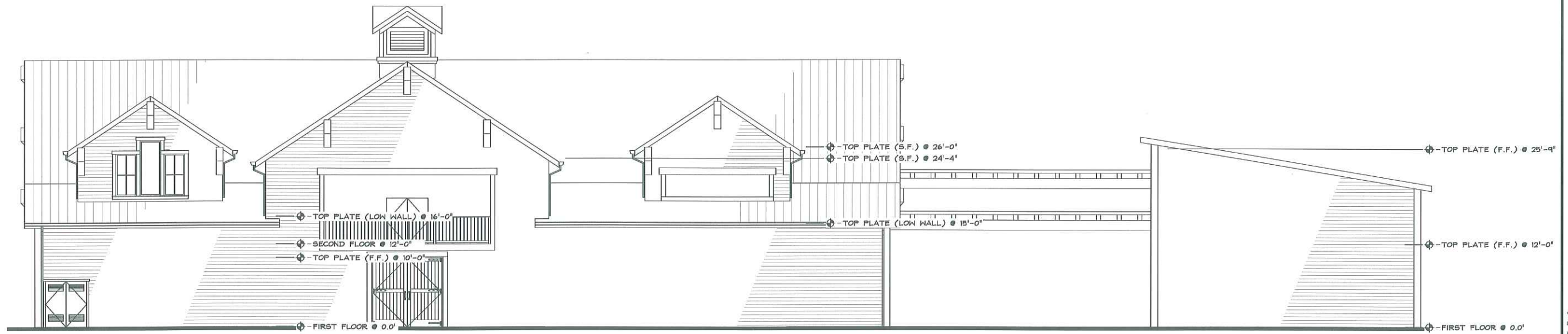
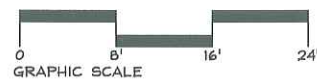
ARCHITECT:	MARY SIKES & ASSOC. 1461 RAILROAD AVE. ST. HELENA, CA 94574 VOICE 707.967-8063 FAX 707.967-1066
CONSULTANTS:	VAL PIZZINI, ENG. 1400 GUERNEVILLE RD., STE. 12 SANTA ROSA, CA. 95403 VOICE 707.527-9802 FAX 707.527-9801
DATE:	08/13/08
SHEET DESCRIPTION:	ELEVATIONS
SITE LOCATION:	A.P.N.: 011-260-045-074 XXX XXX
PROJECT:	BOUNSALL BUILDING 'B' RETAIL #2
SHEET NUMBER:	

R CONSTRUCTION

drawn by: MDN



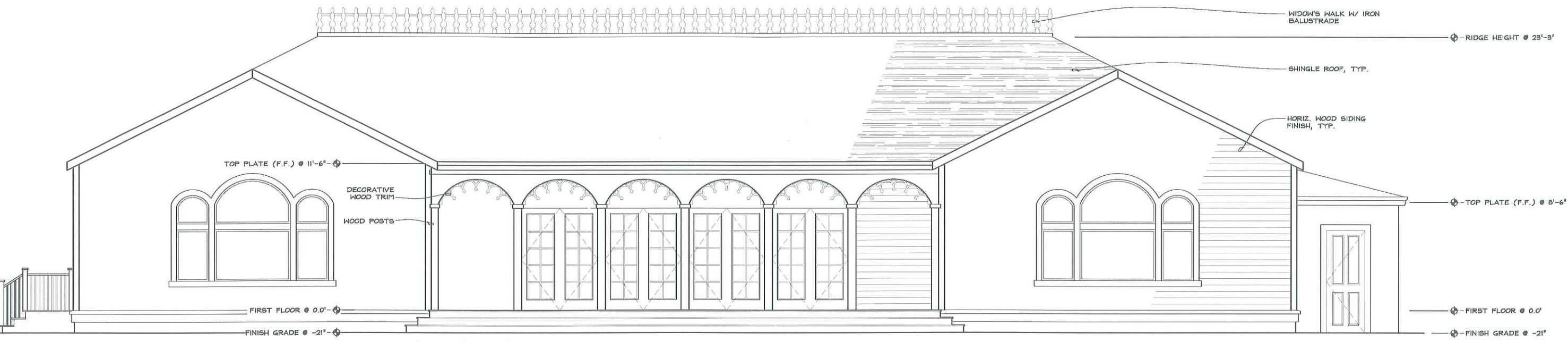
BARREL STORAGE & TANK ROOM
FRONT ELEVATION
1/8"=1'-0"



BARREL STORAGE & TANK ROOM
REAR ELEVATION
1/8"=1'-0"



CONSTRUCTION	PROJECT:	BOUNSALL BUILDING "C" WINERY #1 w/ TANK ROOM
	SHEET NUMBER:	
SITE LOCATION:	A.P.N.: 011-260-045-074 XXX XXX	
SHEET DESCRIPTION:	ELEVATIONS	
DATE:	08/13/08	drawn by: KJC
CONSULTANTS:	VAL PIZZINI, ENG. 1400 GUERNEVILLE RD., STE. 12 SANTA ROSA, CA. 95403 VOICE 707.527-9802 FAX 707.527-9801	
ARCHITECT:	MARY SIKES & ASSOC. 1461 RAILROAD AVE. ST. HELENA, CA 94574 VOICE 707.963-8063 FAX 707.963-1066	



SOUTH ELEVATION
 1/4" = 1'-0"
 0 4' 8' 12'
 GRAPHIC SCALE

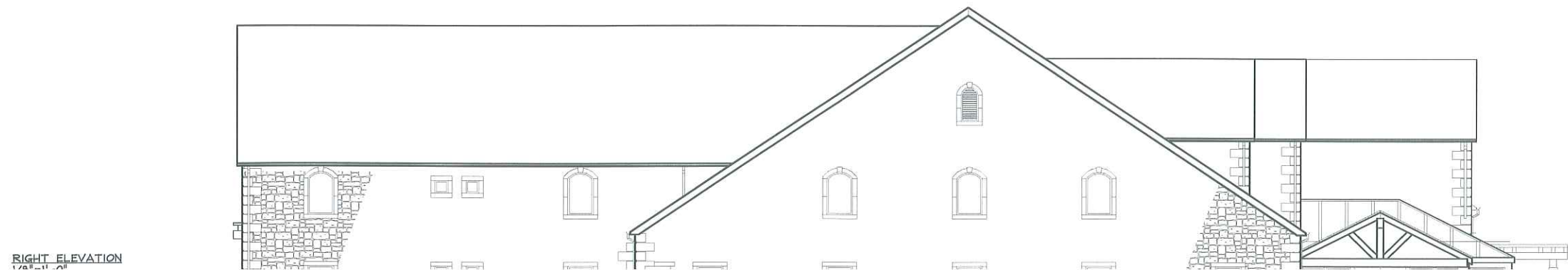
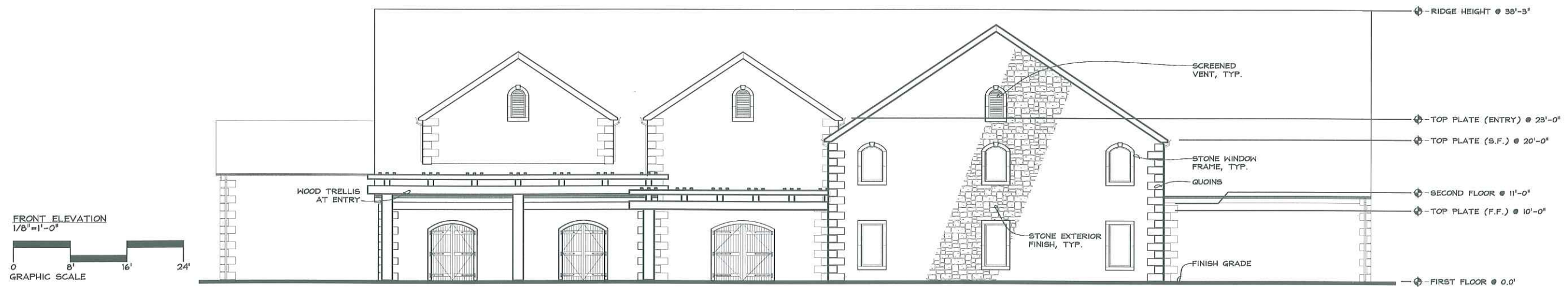
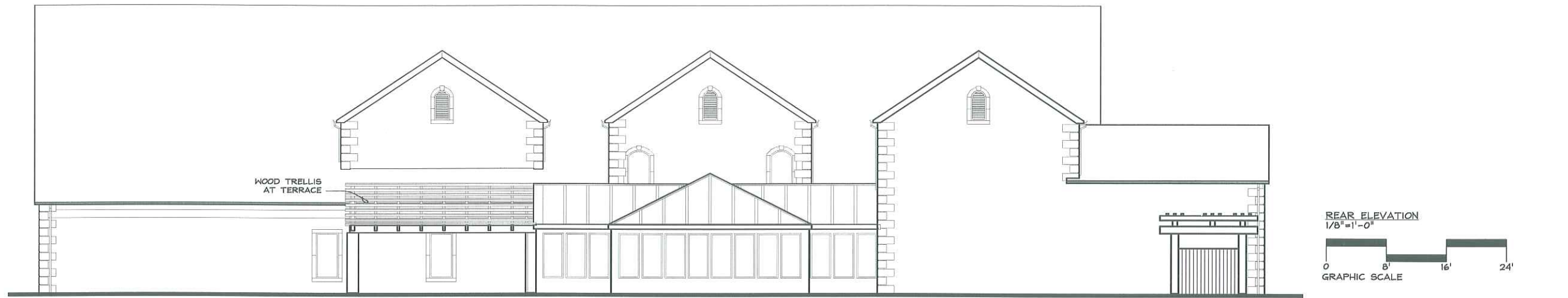
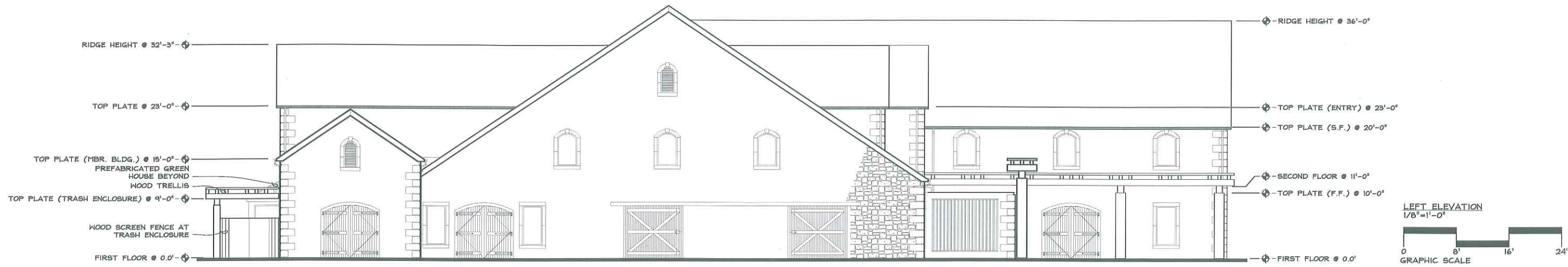


EAST ELEVATION
 1/4" = 1'-0"

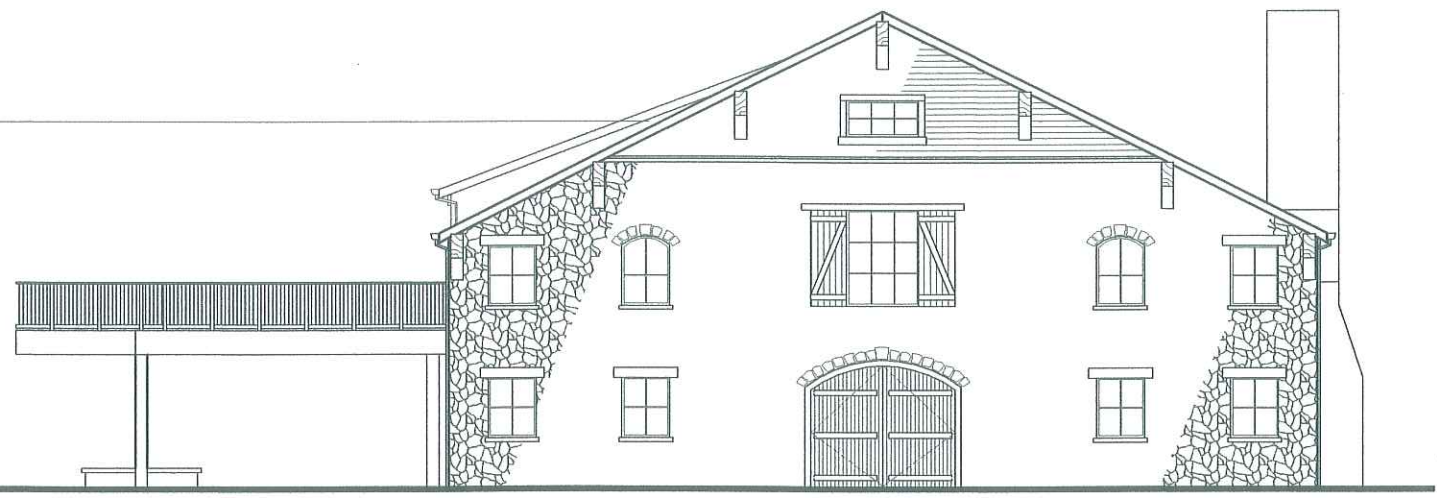
ROR CONSTRUCTION

PROJECT:	BOUNSALL BUILDING "D" RECEPTION
SITE LOCATION:	A.P.N.: 011-260-045-074 XXX XXX
SHEET DESCRIPTION:	ELEVATIONS
DATE:	06/13/06
CONSULTANTS:	VAL PIZZINI, ENG. 1400 GUERNEVILLE RD., STE. 12 SANTA ROSA, CA. 95403 VOICE 707.527.9802 FAX 707.527.9801
ARCHITECT:	MARY SIKES & ASSOC. 1461 RAILROAD AVE. ST. HELENA, CA 94574 VOICE 707.963-8063 FAX 707.963-1066
SHEET NUMBER:	

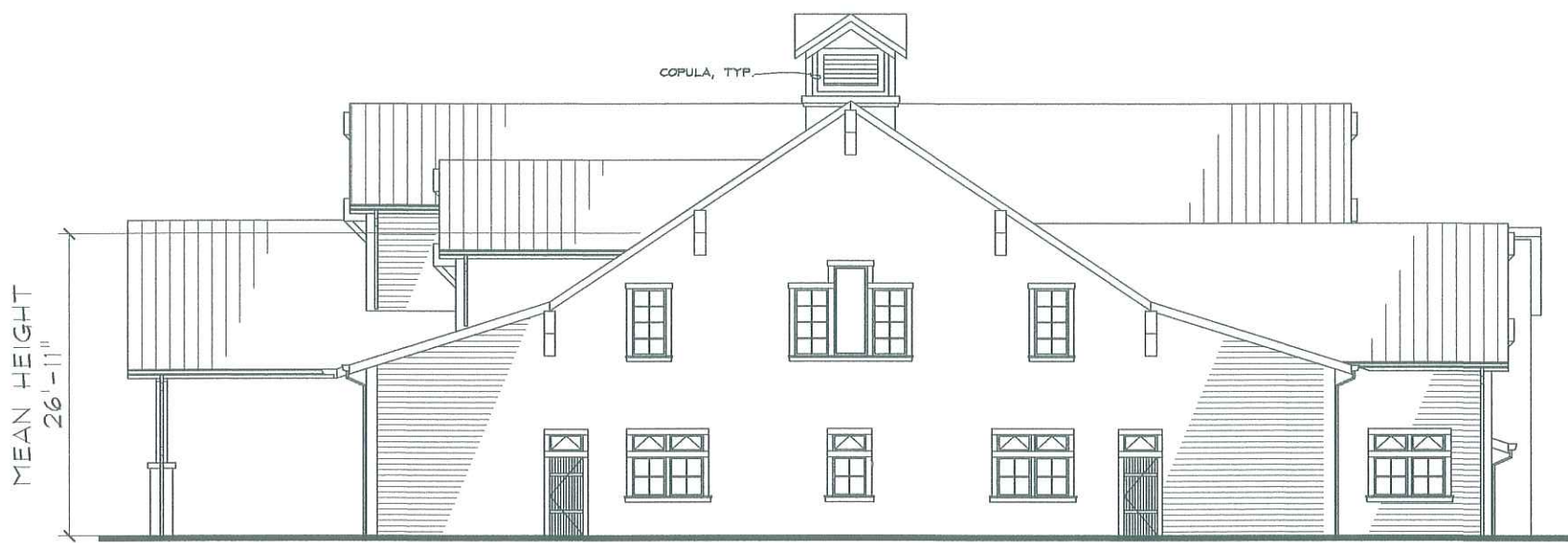
drawn by: KJC



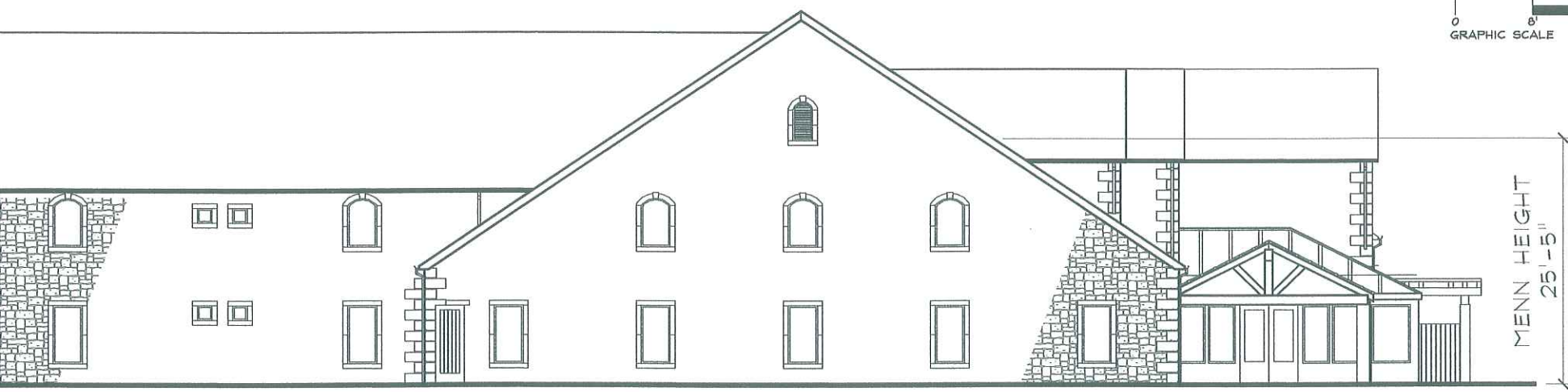
CONSTRUCTION	PROJECT: BOUNSALL BUILDING "F" WINERY #2	SHEET NUMBER:
	SITE LOCATION: A.P.N.: 011-260-045-074 XXX XXX	SHEET DESCRIPTION: EXTERIOR ELEVATIONS
DATE: 08/13/08 drawn by: MDN	CONSULTANTS: VAL PIZZINI, ENG. 1400 GUERNEVILLE RD., STE. 12 SANTA ROSA, CA. 95403 VOICE 707.527-9802 FAX 707.527-9801	ARCHITECT: MARY SIKES & ASSOC. 1461 RAILROAD AVE. ST. HELENA, CA 94574 VOICE 707.963-8063 FAX 707.963-1066



BUILDING "A" DELI WINE
1/16"=1'-0"
GRAPHIC SCALE



WINERY #1
BUILDING "C"
1/16"=1'-0"
GRAPHIC SCALE



WINERY #2 BUILDING "F"
1/16"=1'-0"
GRAPHIC SCALE

RECEIVED
APR - 27 2011
CITY OF CALISTOGA

