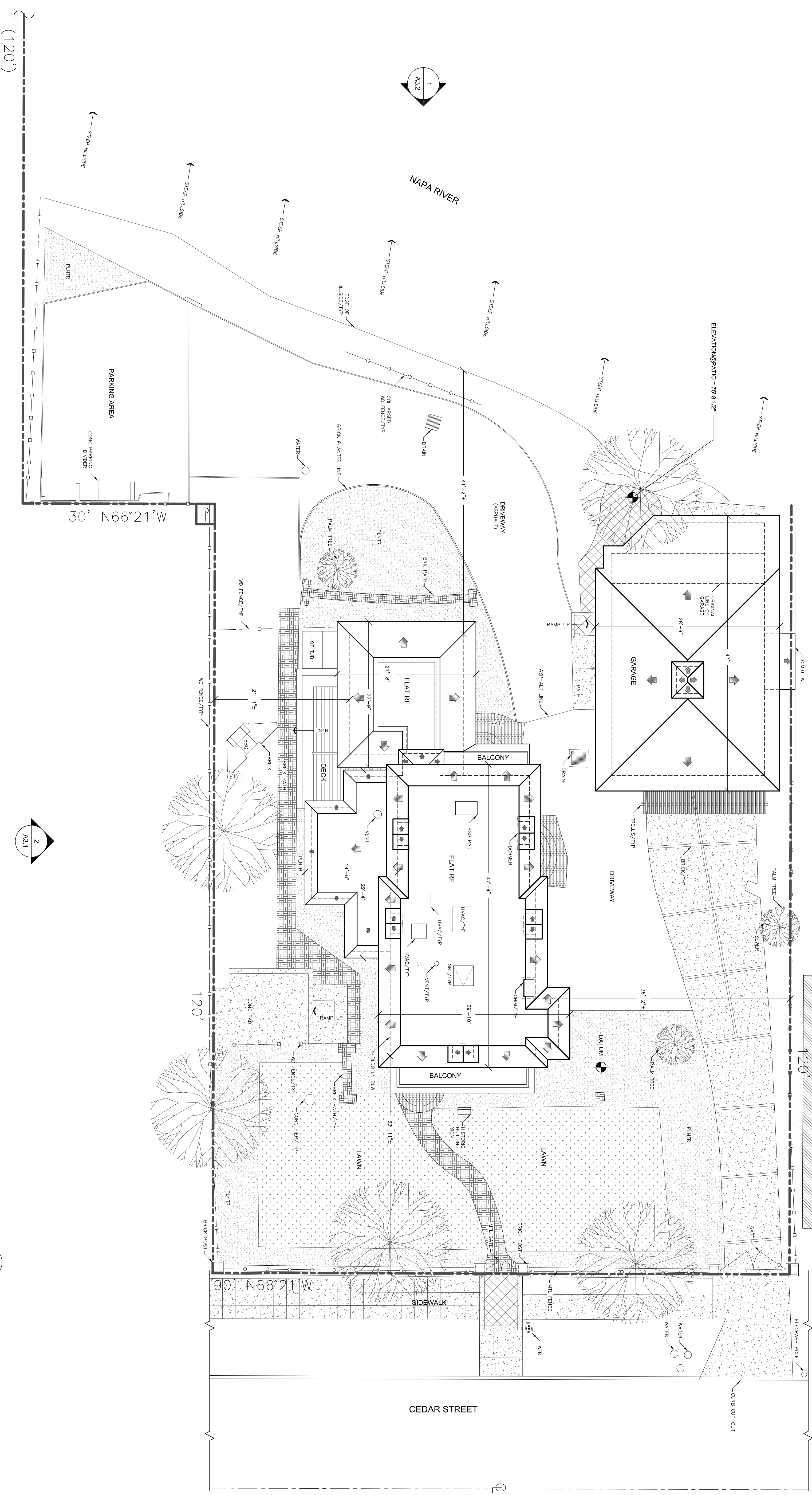
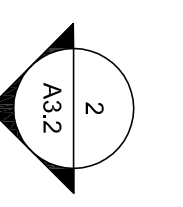
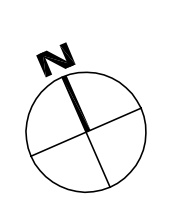
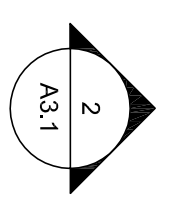


ELEVATION@WATER EDGE = 54'-0"



1 EXISTING ARCHITECTURAL SITE PLAN
18,000 SQFT PROPERTY LINE
SCALE: 1/8"=1'-0"



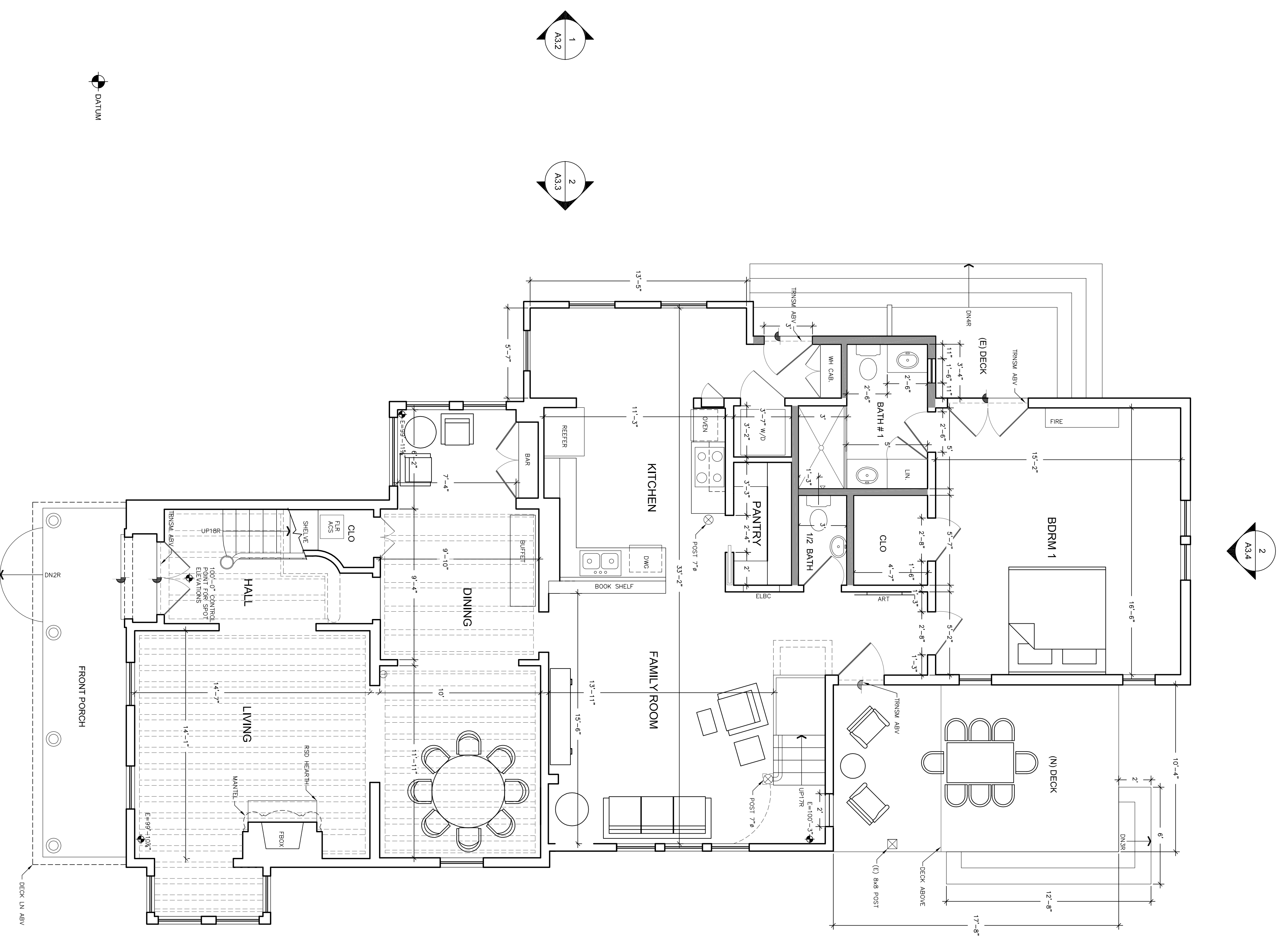
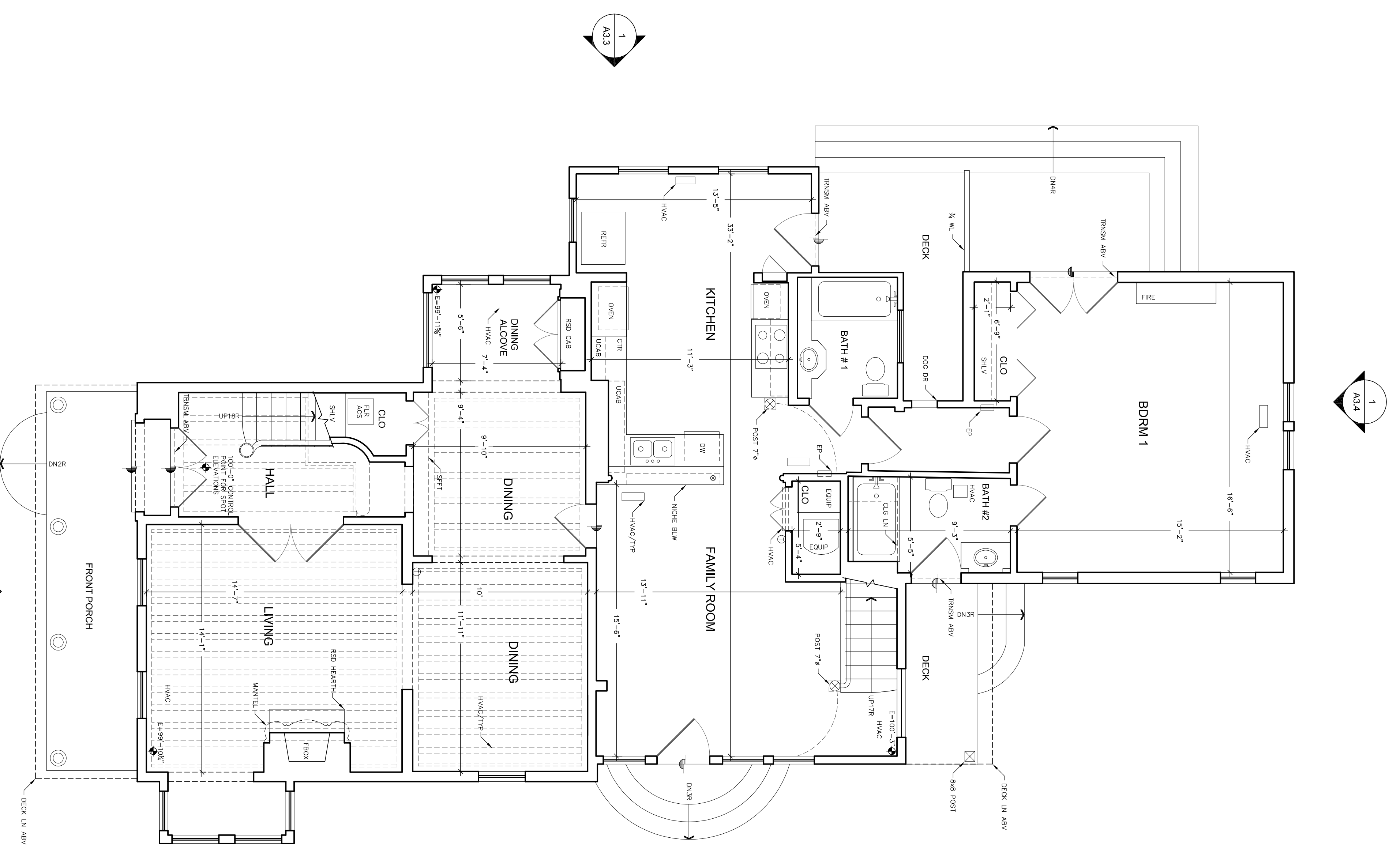
PLEASE NOTE:
100% CONTROL POINT FOR SIGHT ELEVATIONS IS LOCATED AT FINISHED FLOOR AT FRONT ENTRY DOOR.
PLEASE NOTE:
THIS IS NOT A SURVEY. PROPERTY LINES TAKEN FROM TAX ASSESSORS MAP. PLACEMENT ASSUMED.

REVISIONS	BY

Juliana Inman
ARCHITECT
2133 FIRST STREET, NAPA, CA 94559
(707) 226-5304 FAX: (707) 265-7572

FIDDAMAN/HOFFMAN RESIDENCE
1300 CEDAR STREET, CALISTOGA, CA 94515

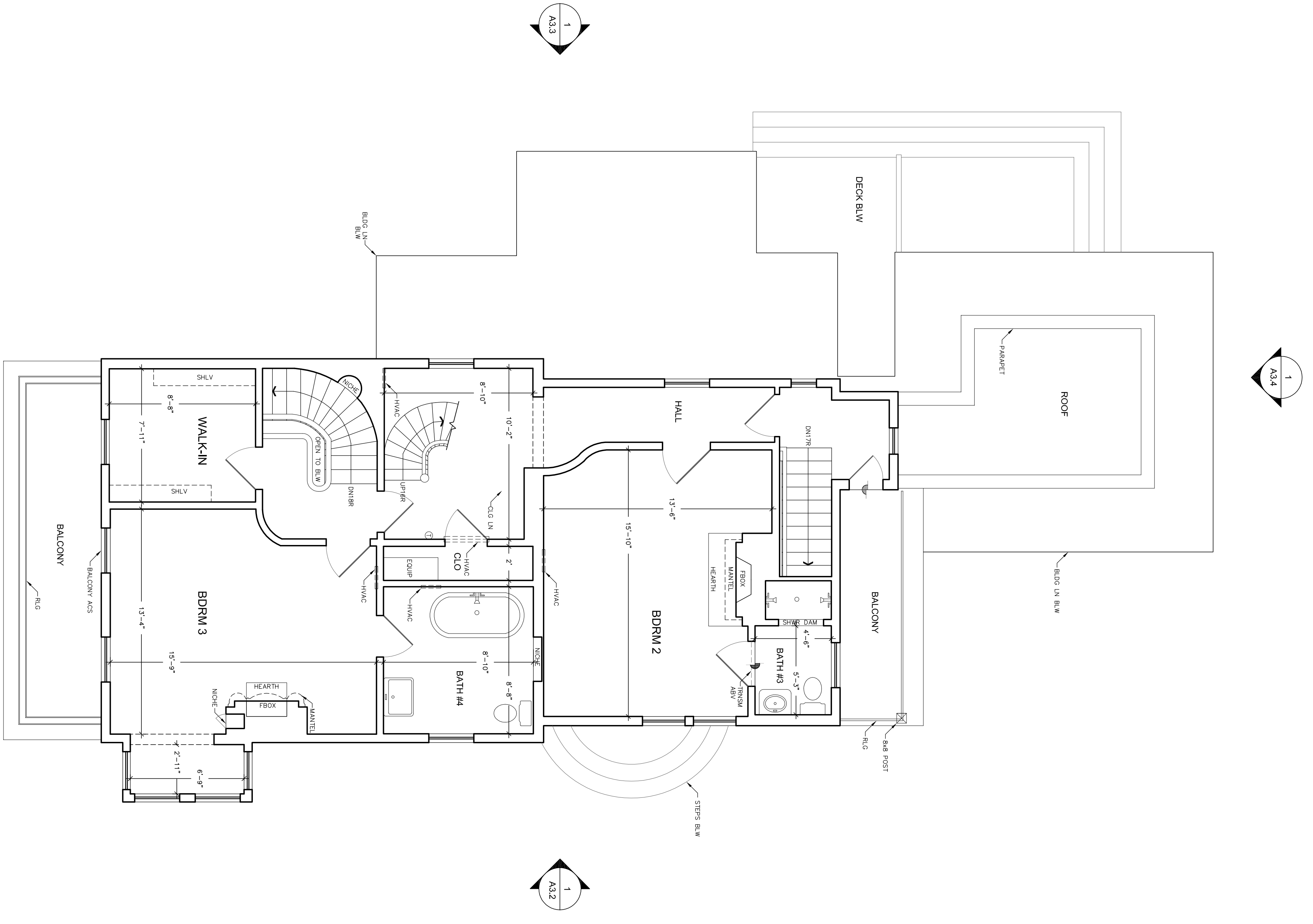
Date: 12-14-2009
Drawn By: N/A
A1.1



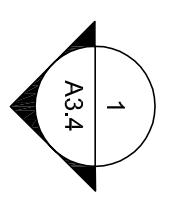
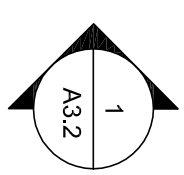
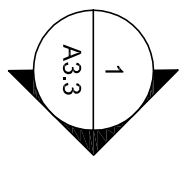
FIDDAMAN/HOFFMAN RESIDENCE
 1300 CEDAR STREET, CALISTOGA, CA 94515

Juliana Inman
 ARCHITECT
 2133 FIRST STREET, NAPA, CA 94559
 (707) 226-53 04 FAX: (707) 265 -7572

REVISIONS	BY



1 EXISTING SECOND LEVEL FLOOR PLAN (NO WORK)
 1004 SOFT INTERIOR
 189 SOFT EXTERIOR
 SCALE: 1/4"=1'-0"

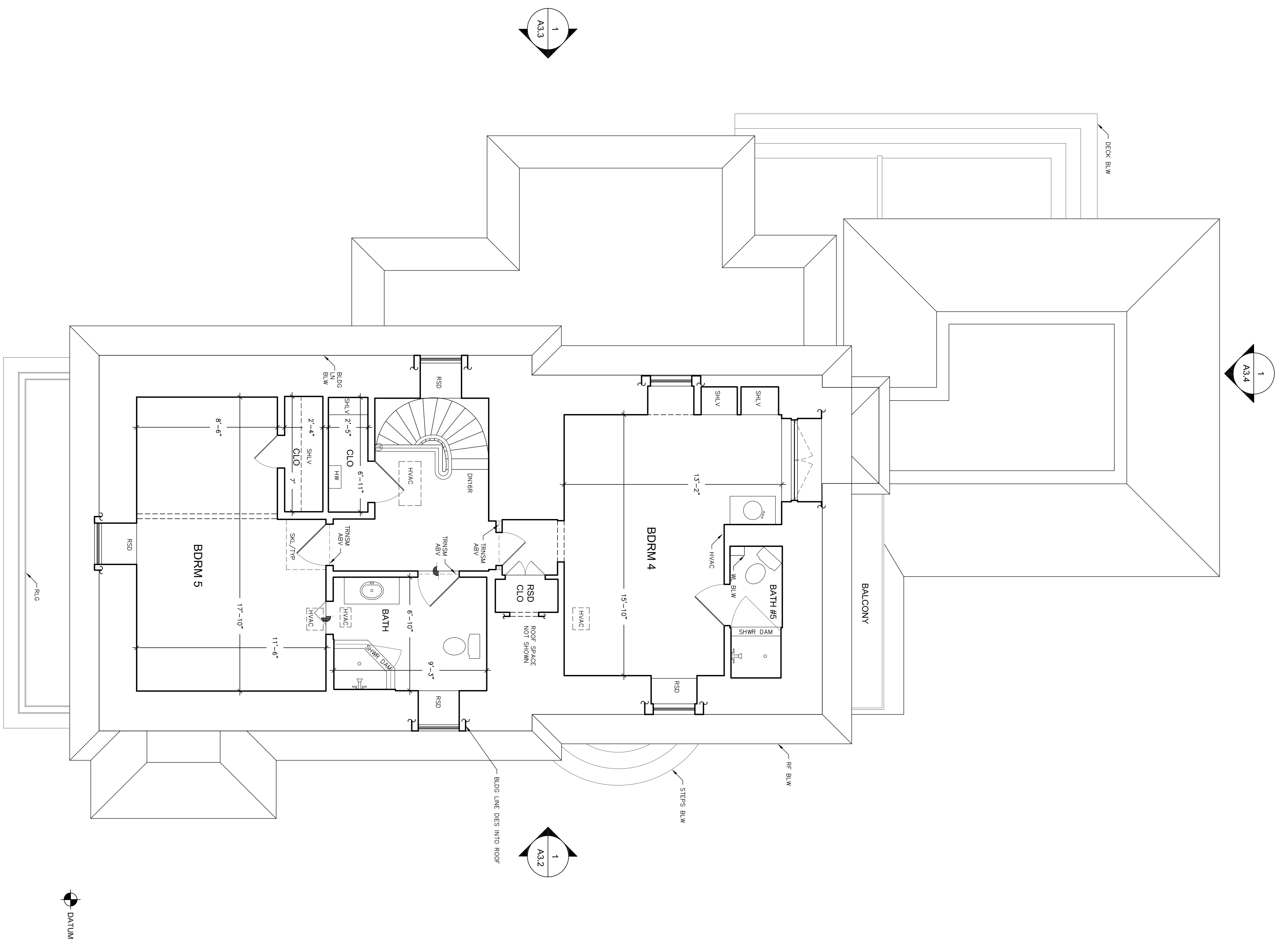


FIDDAMAN/HOFFMAN RESIDENCE
 1300 CEDAR STREET, CALISTOGA, CA 94515

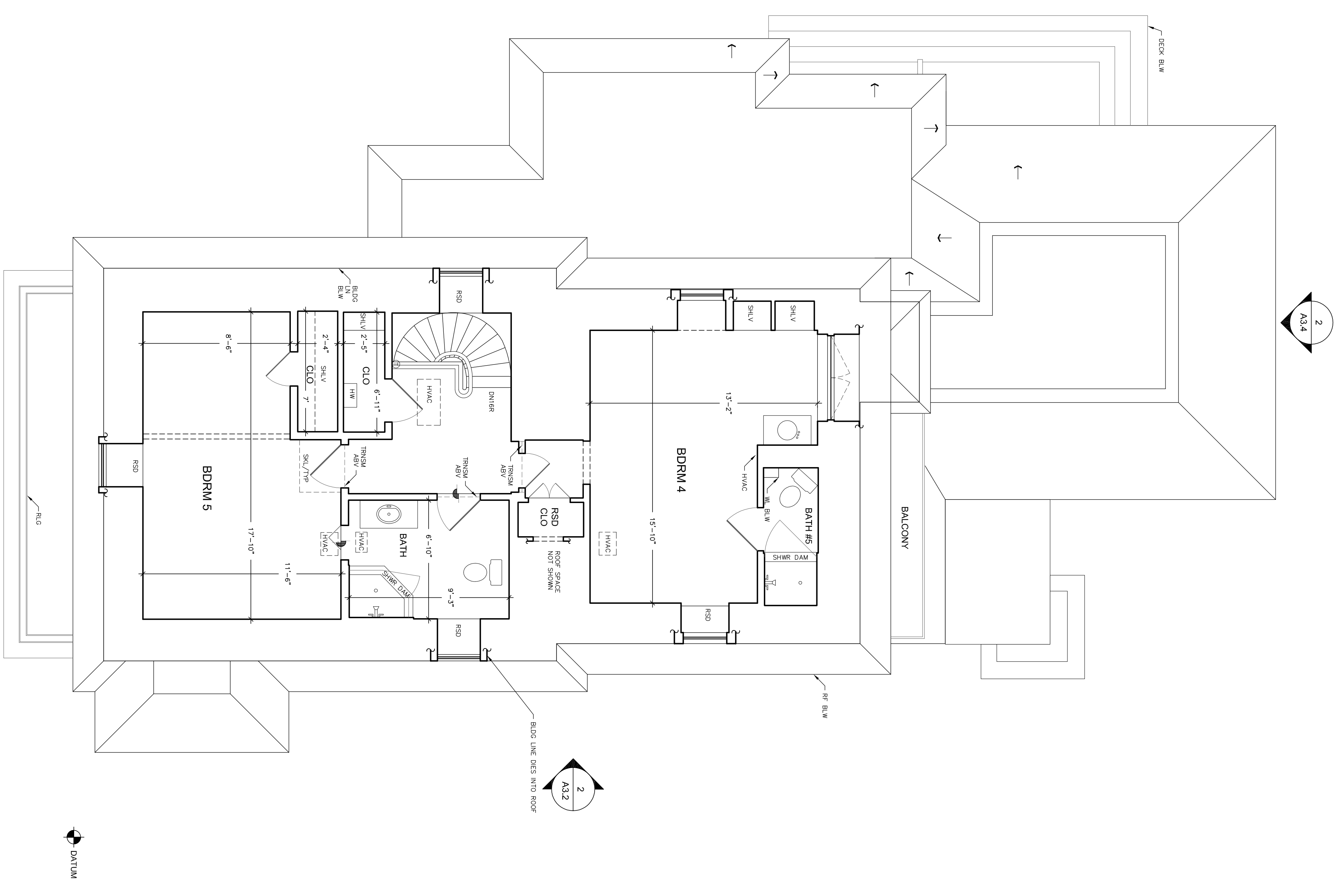
Juliana Inman
 ARCHITECT
 2133 FIRST STREET, NAPA, CA 94559
 (707) 226-53 04 FAX: (707) 265 -7572

REVISIONS	BY

Date: 12-14-2009
 Drawn By: N/A
 A2.2



1 EXISTING UPPER LEVEL/ROOF FLOOR PLAN
 1/8" = 1'-0" SOFT INTERIOR SCALE: 1/4" = 1'-0"



2 PROPOSED UPPER LEVEL/ROOF FLOOR PLAN
 1/8" = 1'-0" SOFT INTERIOR SCALE: 1/4" = 1'-0"

REVISIONS	BY

Juliana Inman
 ARCHITECT
 2133 FIRST STREET, NAPA, CA 94559
 (707) 226-5304 FAX: (707) 265-7572

FIDDAMAN/HOFFMAN RESIDENCE
 1300 CEDAR STREET, CALISTOGA, CA 94515

Date: 12-14-2009
 Drawn By: N/A

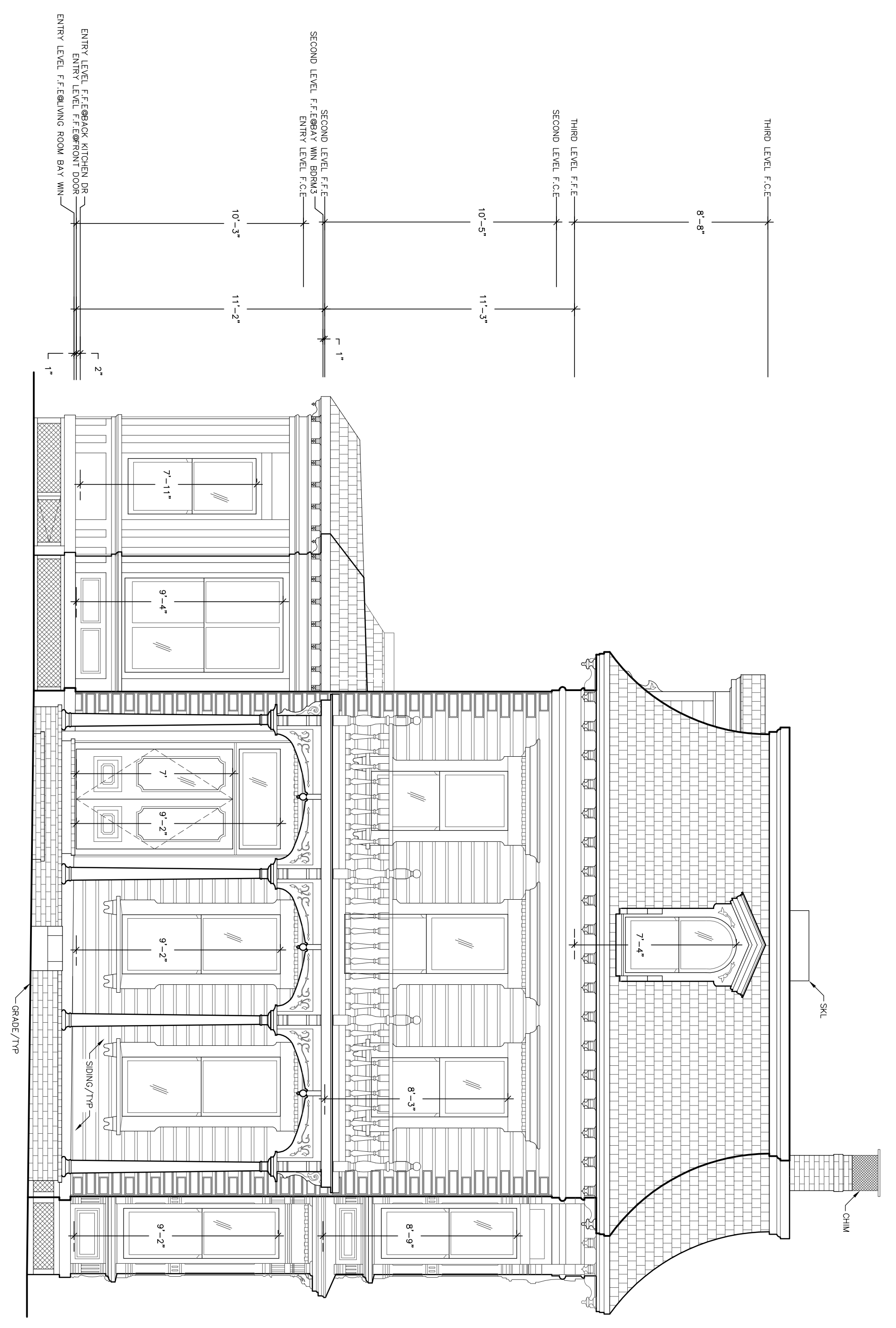
REVISIONS	BY

Juliana Inman
ARCHITECT
 2133 FIRST STREET, NAPA, CA 94559
 (707) 226-53 04 FAX: (707) 265 -7572

FIDDAMAN/HOFFMAN RESIDENCE
 1300 CEDAR STREET, CALISTOGA, CA 94515

Date: 12-14-2009
 Drawn By: N/A

A3.1



1 EXISTING SOUTH ELEVATION (NO WORK)
 SCALE: 1/4"=1'-0"

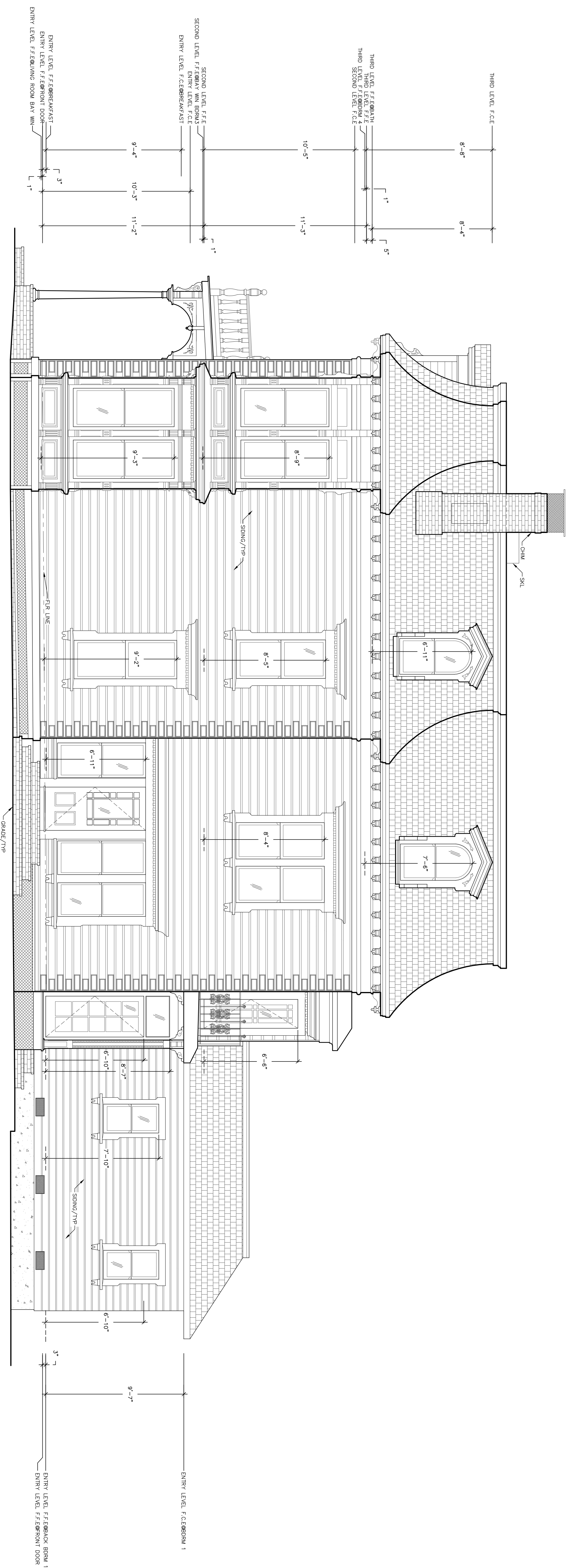
PLEASE NOTE:
 BUILDING HAS BEEN DRAWN WITHOUT SHOWING THE DEFLECTION IN THE ROOF PLANE AND SIDING TO CREATE AN "ORIGINAL CONSTRUCTION" IMAGE OF THE BUILDING, WHILE STILL MAINTAINING ACCURATE DIMENSIONS, ROOM HEIGHTS, AND WINDOW SIZE AND LOCATIONS. SOME ELEMENTS AND THEIR RELATIONSHIP WITH OTHER ELEMENTS MAY BE INCONSISTENT WITH ACTUAL MEASUREMENTS TAKEN ON SITE.



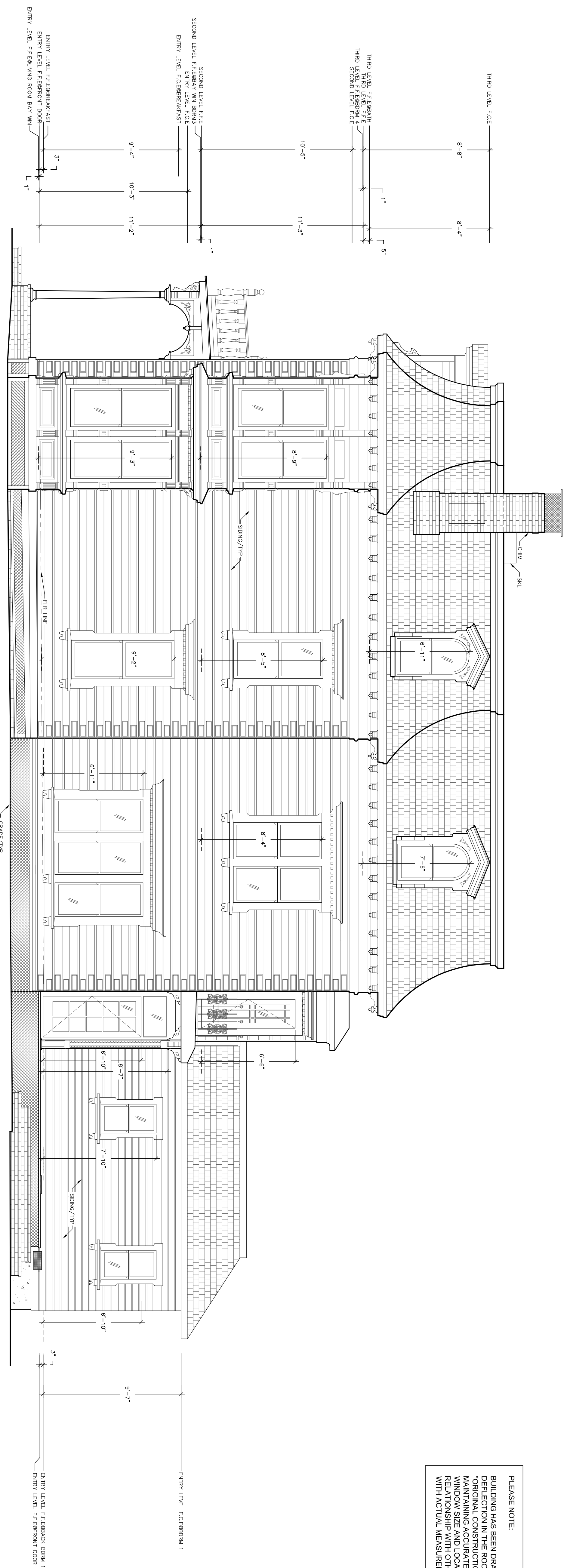
Juliana Inman
ARCHITECT
 2133 FIRST STREET, NAPA, CA 94559
 (707) 226-53 04 FAX: (707) 265-7572

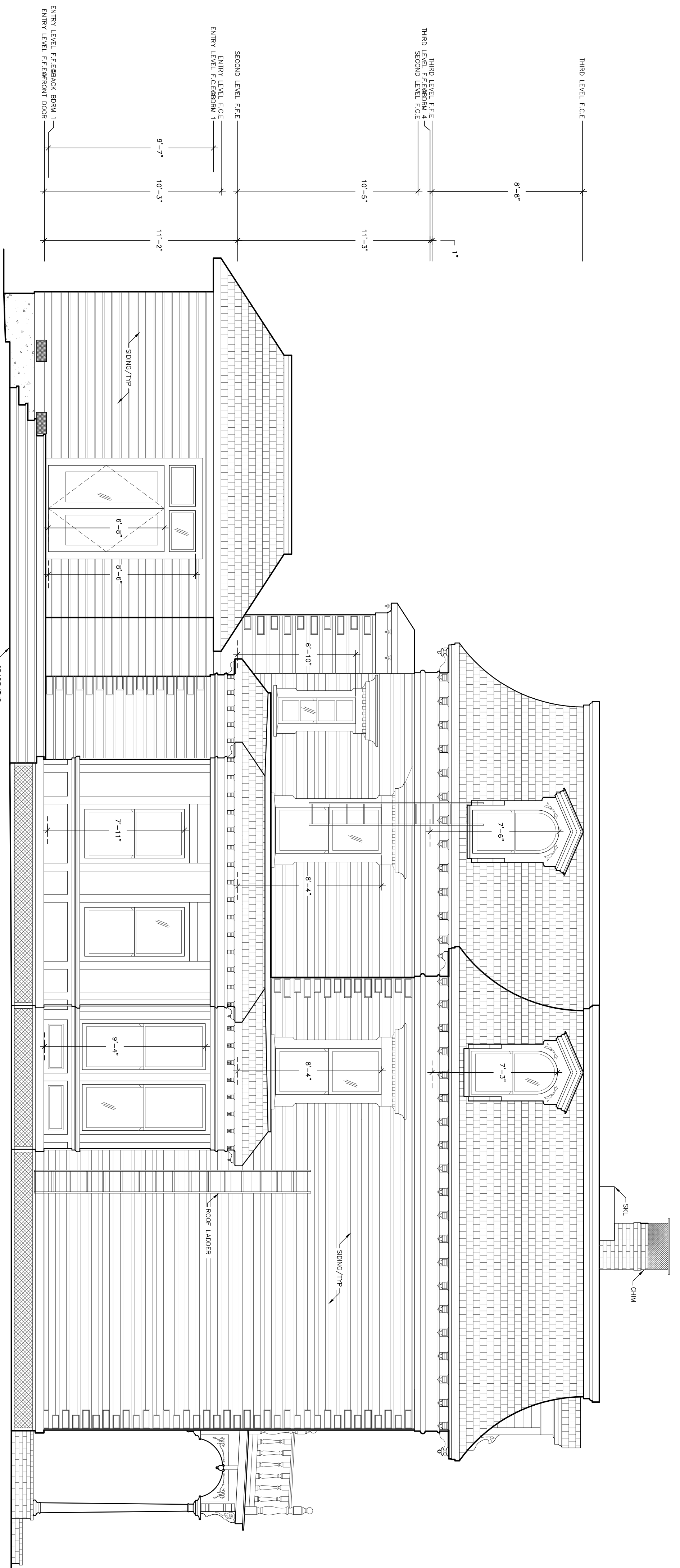
FIDDAMAN/HOFFMAN RESIDENCE
 1300 CEDAR STREET, CALISTOGA, CA 94515

Date: 12-14-2009
 Drawn By: N/A

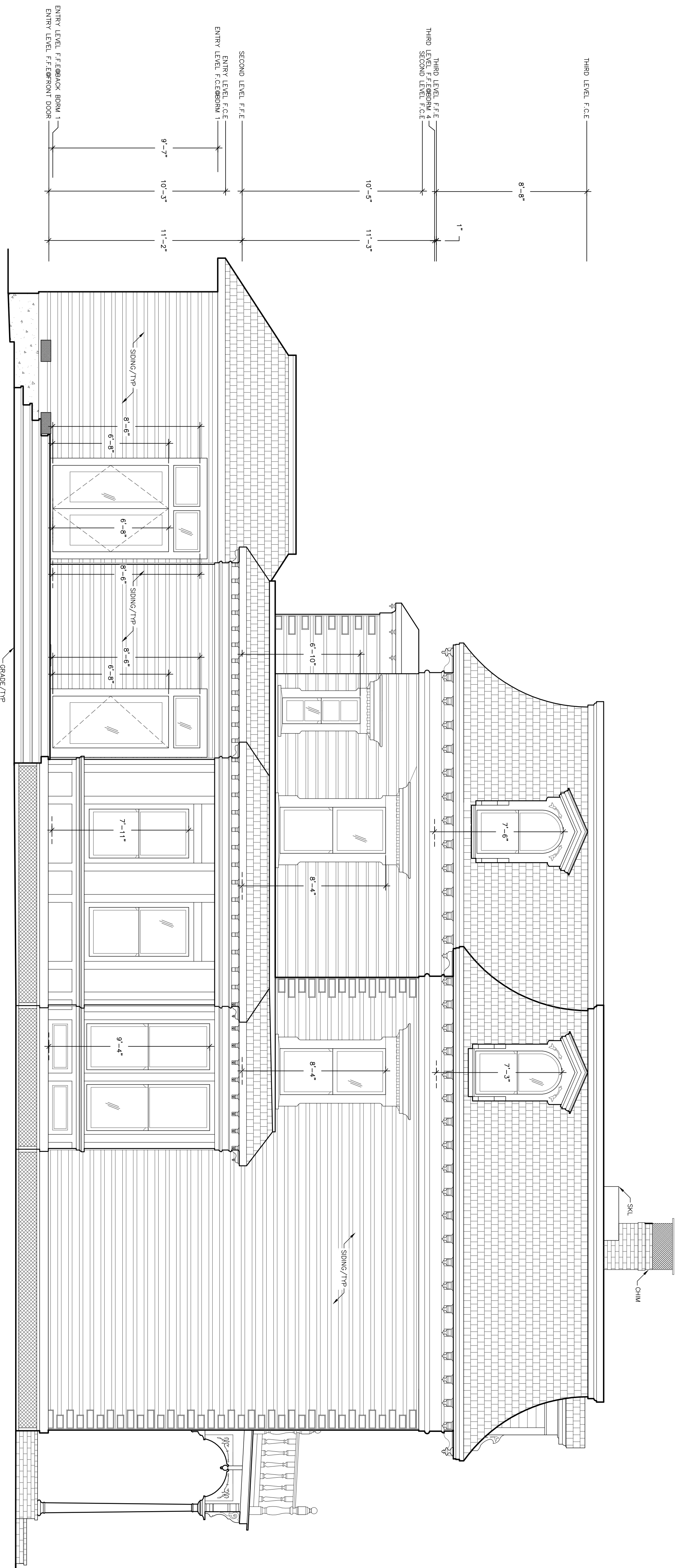


PLEASE NOTE:
 BUILDING HAS BEEN DRAWN WITHOUT SHOWING THE
 DETAILING IN THE ROOF PLANE AND SHING TO CREATE AN
 ACCURATE REPRESENTATION OF THE BUILDING.
 MAINTAINING ACCURATE DIMENSIONS, ROOM HEIGHTS AND
 WINDOW SIZE AND LOCATIONS. SOME ELEMENTS AND THEIR
 RELATIONSHIP WITH OTHER ELEMENTS MAY BE INCONSISTENT
 WITH ACTUAL MEASUREMENTS TAKEN ON SITE.





1 EXISTING WEST ELEVATION
SCALE: 1/4"=1'-0"



2 PROPOSED WEST ELEVATION
SCALE: 1/4"=1'-0"



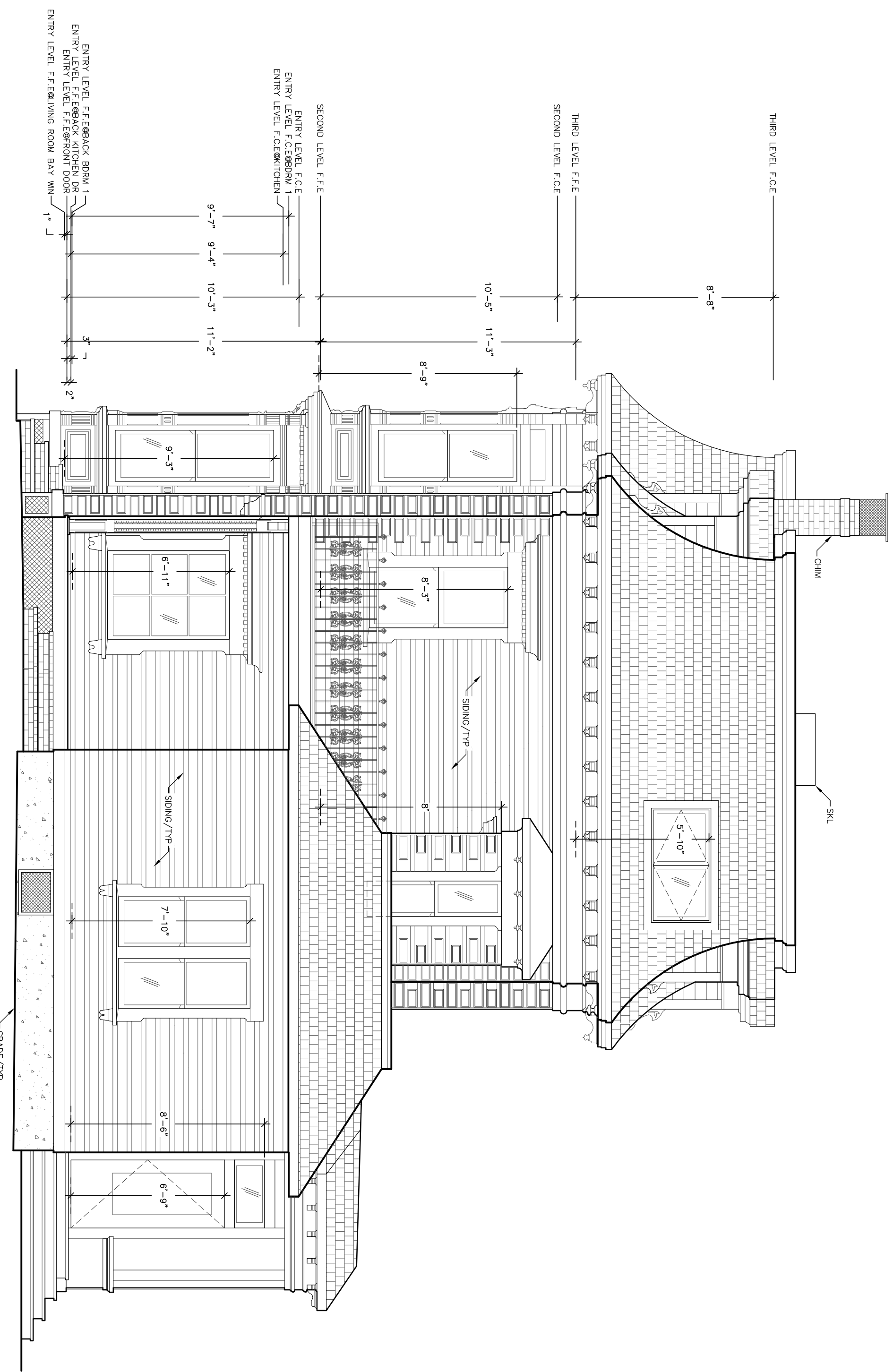
PLEASE NOTE:
BUILDING HAS BEEN DRAWN WITHOUT SHOWING THE
DETERMINED ROOF PITCH AND SKYLIGHT TO CREATE AN
ORIGINAL, CONSTRUCTION IMAGE OF THE BUILDING, WHILE
MAINTAINING ACCURATE DIMENSIONS, ROOM HEIGHTS AND
WINDOW SIZE AND LOCATIONS. SOME ELEMENTS AND THEIR
RELATIONSHIP WITH OTHER ELEMENTS MAY BE INCONSISTENT
WITH ACTUAL MEASUREMENTS TAKEN ON SITE.

REVISIONS	BY

Juliana Inman
ARCHITECT
2133 FIRST STREET, NAPA, CA 94559
(707) 226-5304 FAX: (707) 265-7572

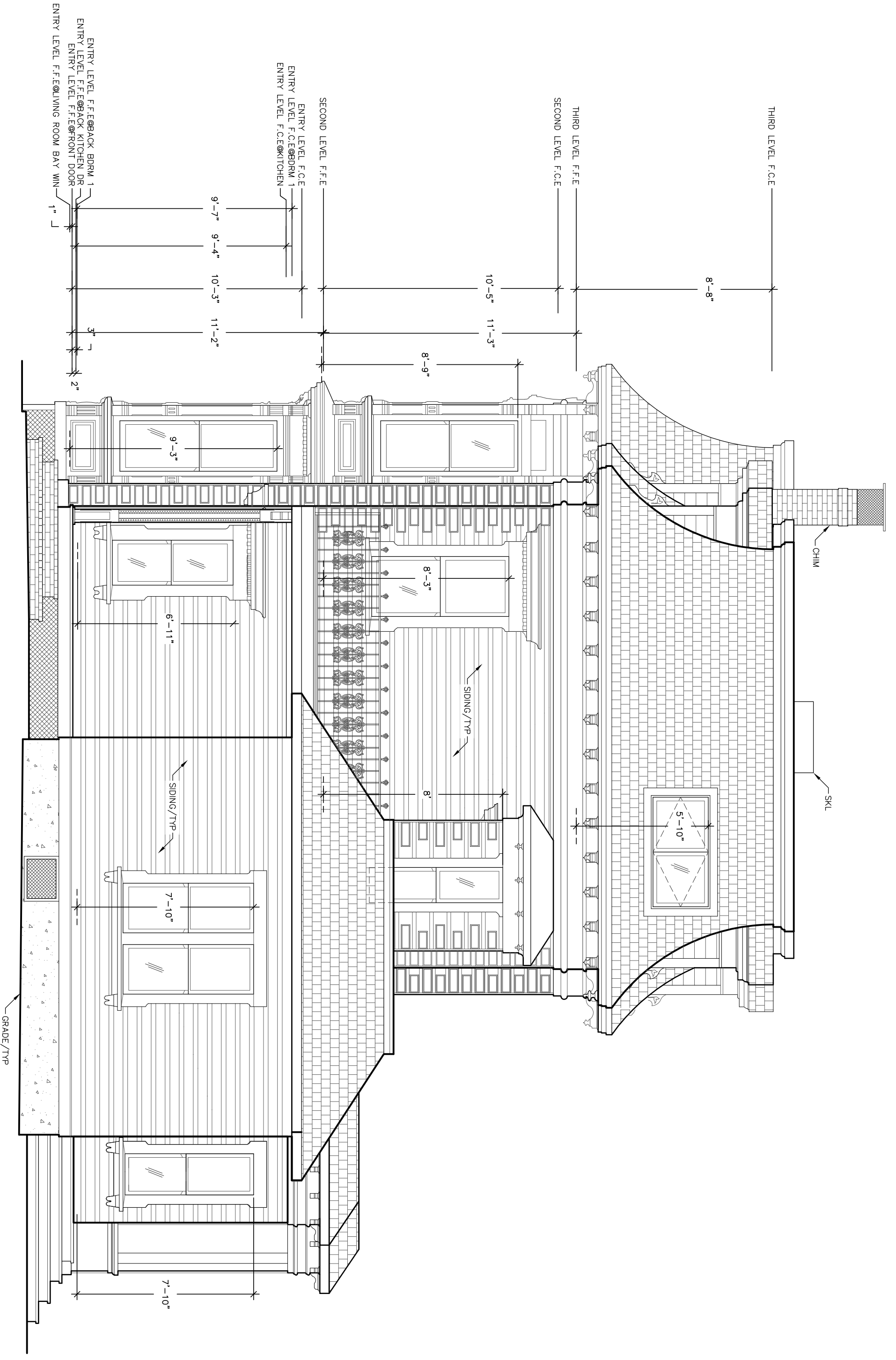
FIDDAMAN/HOFFMAN RESIDENCE
1300 CEDAR STREET, CALISTOGA, CA 94515

Date: 12-14-2009
Drawn By: N/A



1 EXISTING NORTH ELEVATION
SCALE: 1/4"=1'-0"

PLEASE NOTE:
BUILDING HAS BEEN DRAWN WITHOUT SHOWING THE DIRECTION IN THE ROOF PLANE AND SIDING TO CREATE AN ACCURATE REPRESENTATION OF THE EXISTING BUILDING. MAINTAINING ACCURATE DIMENSIONS, ROOM HEIGHTS AND WINDOW SIZE AND LOCATIONS, SOME ELEMENTS AND THEIR RELATIONSHIP WITH OTHER ELEMENTS MAY BE INCONSISTENT WITH ACTUAL MEASUREMENTS TAKEN ON SITE.



2 PROPOSED NORTH ELEVATION
SCALE: 1/4"=1'-0"

REVISIONS	BY

Juliana Inman
ARCHITECT
2133 FIRST STREET, NAPA, CA 94559
(707) 226-5304 FAX: (707) 265-7572

FIDDAMAN/HOFFMAN RESIDENCE
1300 CEDAR STREET, CALISTOGA, CA 94515

Date: 12-14-2009
Drawn By: N/A
A3.4