

# OneBayArea

## Sustainable Communities Strategy



A Local-Regional Partnership

December 2010

## Senate Bill 375

- Landmark legislation for California on land use, transportation and environmental planning passed in 2008
- A local-regional process to support neighborhood development, conserve resources and create a sustainable Bay Area

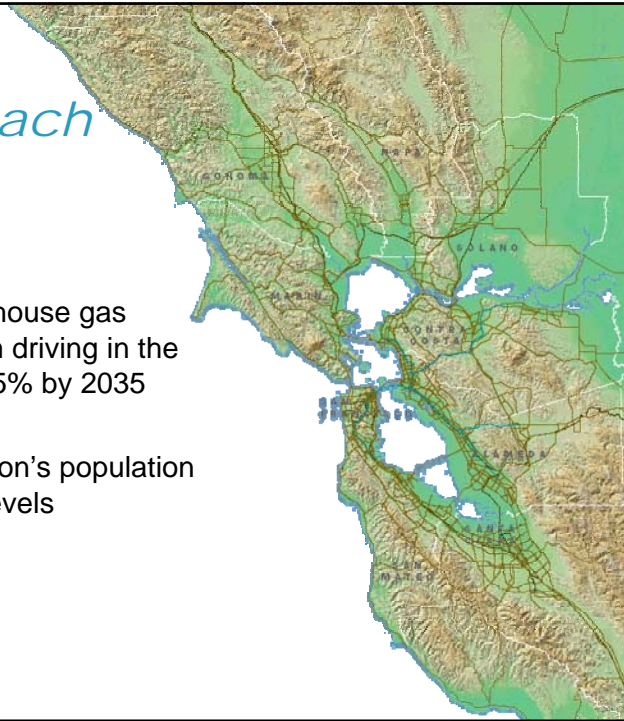


## *Purpose and Approach*

- **Goals**

- Reduce greenhouse gas emissions from driving in the Bay Area by 15% by 2035
- House the region's population at all income levels

**OneBayArea**  
Working for Sustainability



## *Purpose and Approach*

- **Goals**

**Build a Bay Area that thrives  
and prospers.**

- Complete communities, both livable and affordable
- Walkable places with services and amenities
- Sustainable transportation system
- Attractive place for business

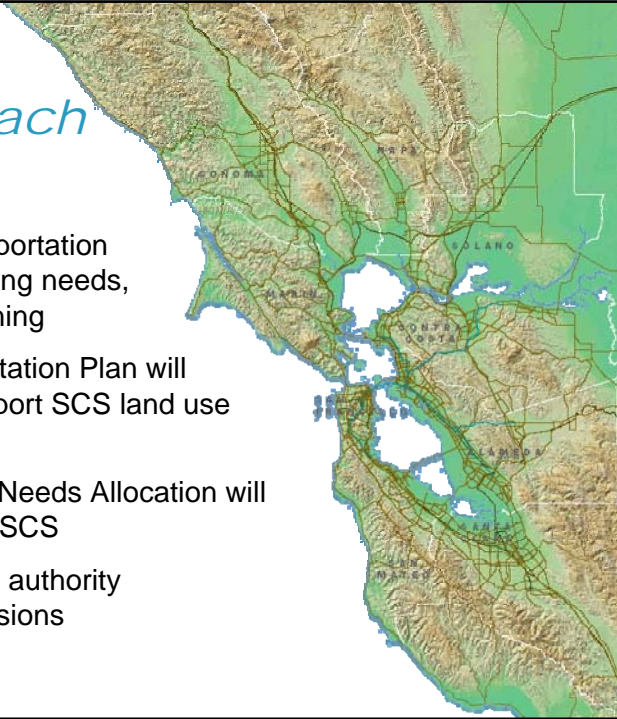
**OneBayArea**  
Working for Sustainability



## Purpose and Approach

- Alignment of transportation investments, housing needs, and land use planning
- Regional Transportation Plan will align with and support SCS land use pattern
- Regional Housing Needs Allocation will be consistent with SCS
- No change to local authority over land use decisions

**OneBayArea**  
Working for Sustainability



## Building on Existing Efforts

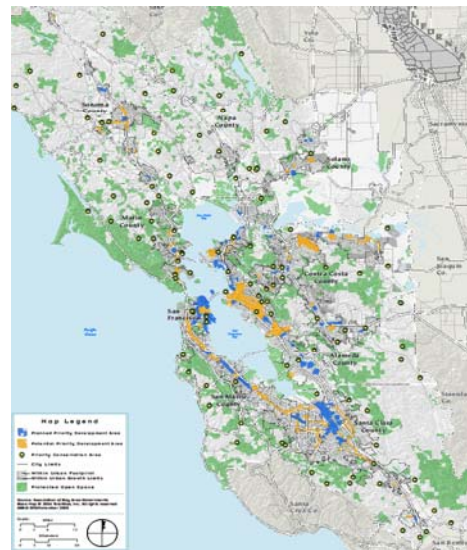
### Priority Development Areas

Locally-nominated areas for sustainable development supported by planning and capital grants

- Existing Communities
- Near Transit
- Planned for more housing

### Priority Conservation Areas

- Identified resource lands
- Enhance Rural Areas



**OneBayArea**  
Working for Sustainability

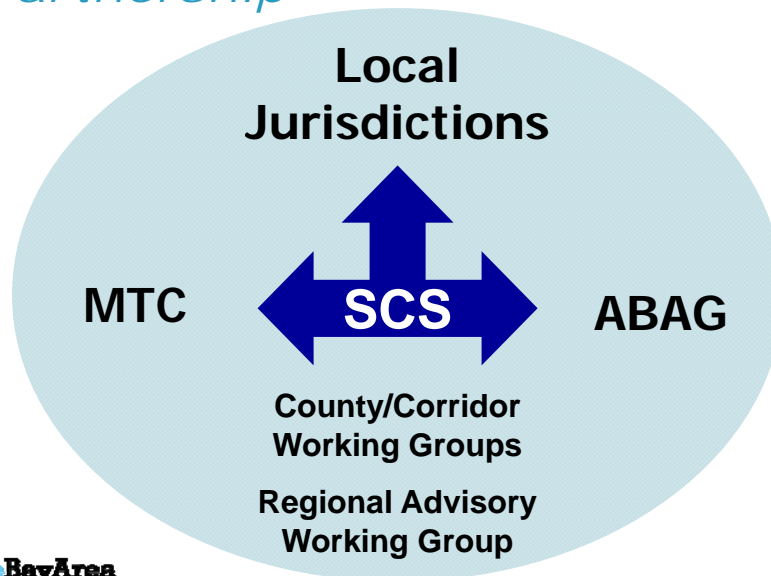
## Building on Existing Efforts

Identifying additional opportunity areas for sustainable development.

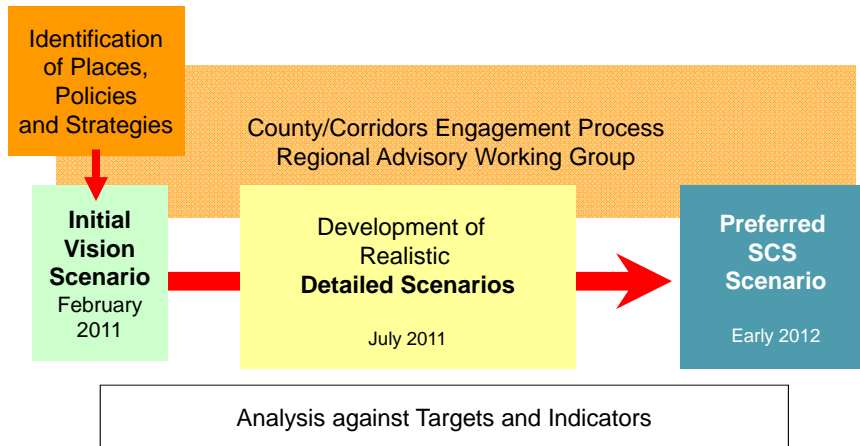
- Mixed-use development in suburban and rural centers
- Retrofitting office parks and shopping centers
- Growing employment centers



## Partnership



## Process: SCS Scenarios



## Regional Housing Needs Allocation

- Essential task of sustainable development in the Bay Area
- Now integrated with land use planning and transportation investments



## *Regional Transportation Plan*

- Link land use choices and transportation investments
- Transportation investments address greenhouse gas emissions reduction and supporting complete communities
- Project assessment: important component of the SCS Detailed Scenarios
- One Environmental Impact Report for both SCS and RTP

## *Integration of Regional Goals*

- **BAAQMD** — CEQA Guidelines
- **BCDC** — Bay Plan and Adaptation Strategies



## *Unique Role of the City of ... in the SCS*

- Local planning efforts:
- Link to SCS:
- Core sustainable strategies:
- Investments required for sustainable development:
- Participation process:

## *Benefits for all*

- SCS rewards cities choosing to advance local goals and improve quality of life beyond their borders through affordable housing, jobs, or reduced driving
- SCS connects local neighborhood concerns (housing, jobs, traffic) to regional objectives and resources
- SCS provides a platform to address high housing costs, poverty, job access, and public health, among other tasks
- SCS recognizes the importance of identifying and evaluating infrastructure investments

## *Benefits for all*

### **Regional agencies are exploring:**

- Grants for affordable housing close to transit
- Infrastructure bank to support investments in housing and jobs close to transit
- Transportation investments that reduce greenhouse gas emissions
- Infrastructure investments in small towns providing services and improving pedestrian access

## *Next Steps*

- Regional agencies release Initial Vision Scenario February 2011
- City staff will provide report on local implications of the Initial Vision Scenario
- City staff will gather input from city council and share with regional agencies

